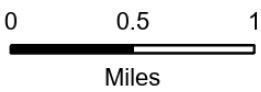


79°30'W 79°29.5'W 79°29'W 79°28.51'W 79°28'W 79°27.5'W 79°27'W 79°26.5'W 79°26'W 79°25.5'W 79°25'W 79°24.5'W 79°24'W 79°23.5'W 79°23'W 79°22.5'W 79°22'W

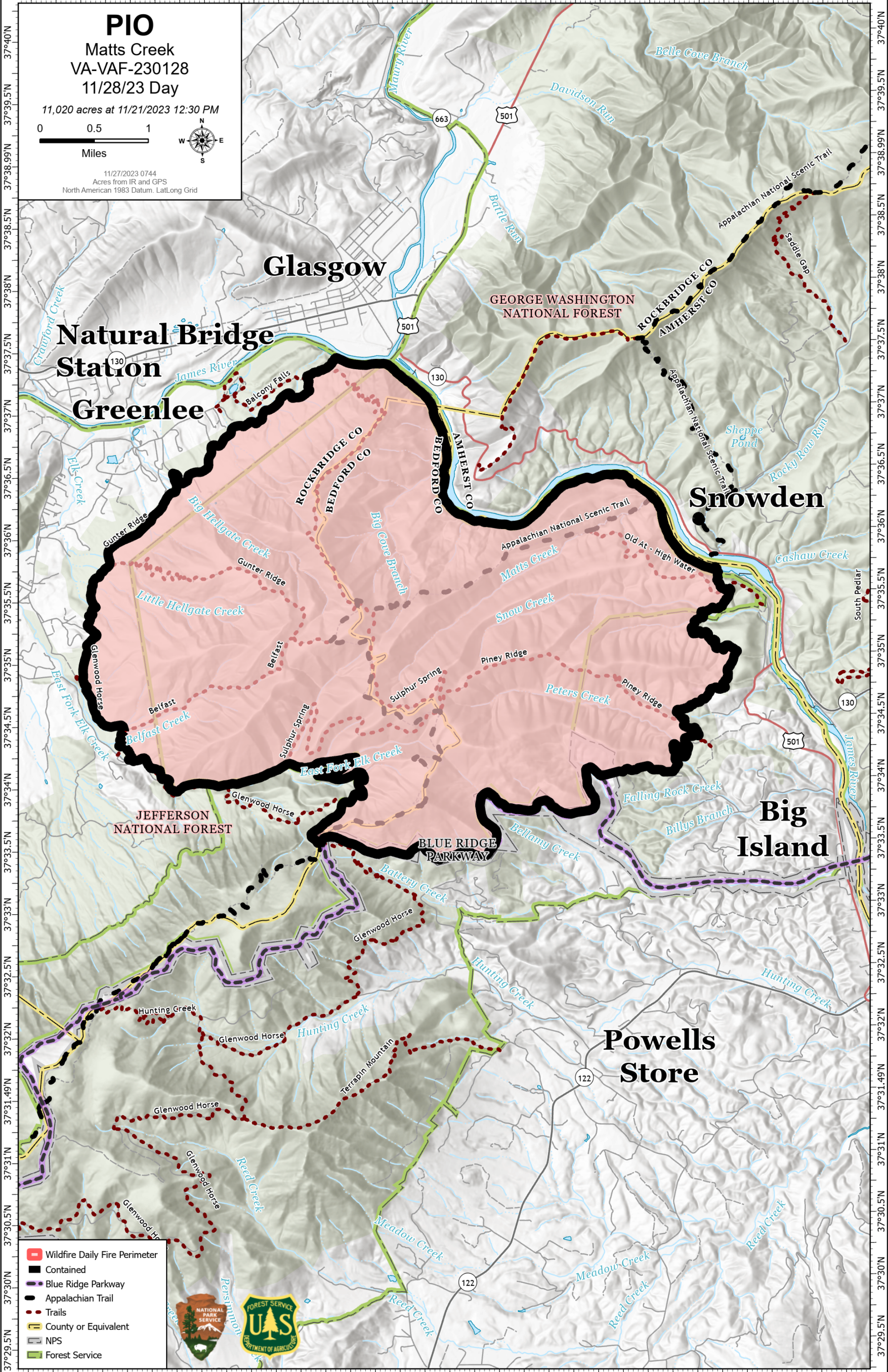
# PIO

Matts Creek  
VA-VAF-230128  
11/28/23 Day

11,020 acres at 11/21/2023 12:30 PM



11/27/2023 0744  
Acres from IR and GPS  
North American 1983 Datum, LatLong Grid



79°30.5'W 79°30'W 79°29.5'W 79°29'W 79°28.51'W 79°28'W 79°27.5'W 79°27'W 79°26.5'W 79°26'W 79°25.5'W 79°25'W 79°24.5'W 79°24'W 79°23.5'W 79°23'W 79°22.5'W 79°22'W

- Wildfire Daily Fire Perimeter
- Contained
- Blue Ridge Parkway
- Appalachian Trail
- Trails
- County or Equivalent
- NPS
- Forest Service

