

# Quaker Run Wildfire

3,832 Acres as of November 9, 9pm

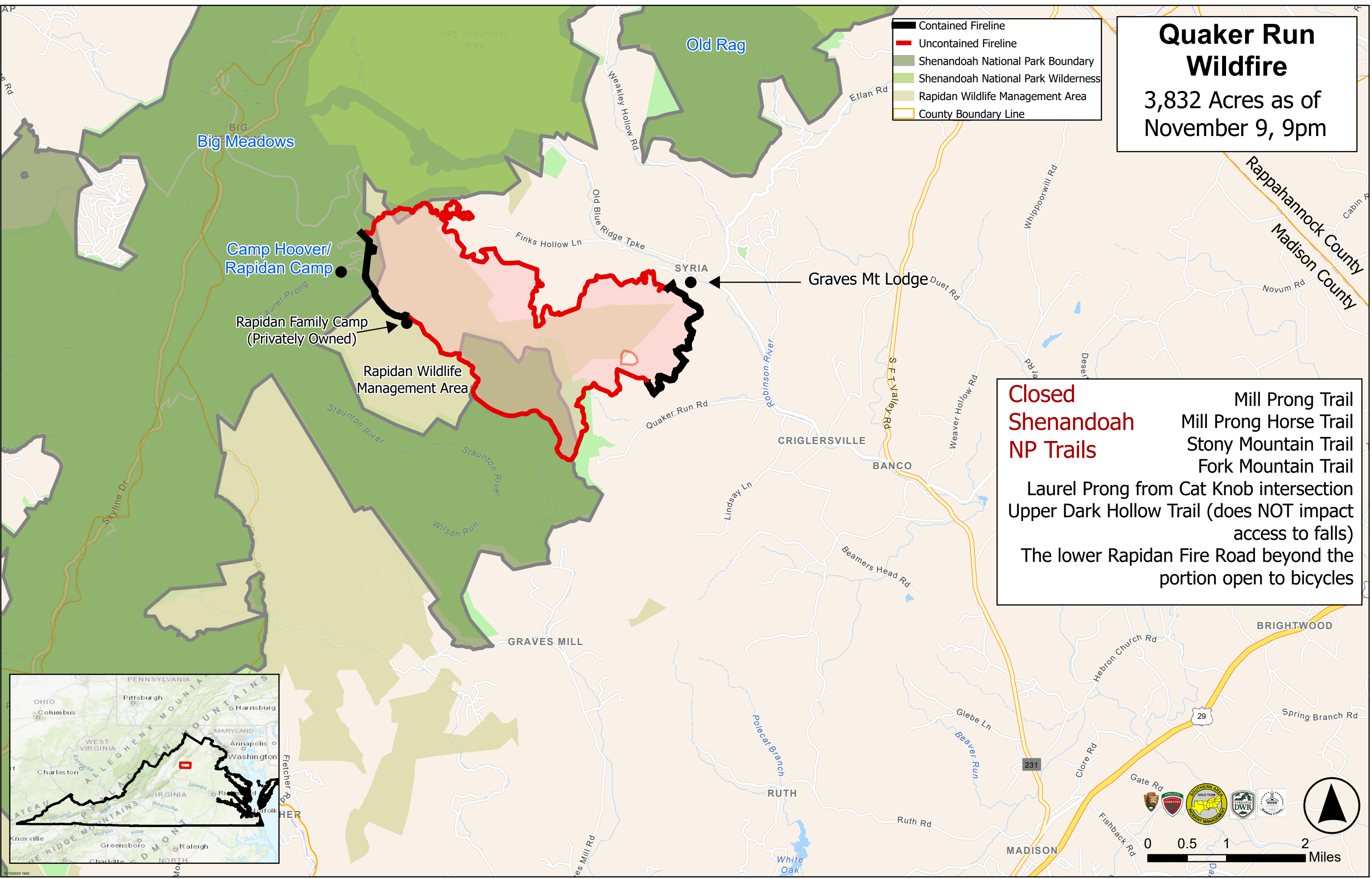
- Contained Fireline
- Uncontained Fireline
- Shenandoah National Park Boundary
- Shenandoah National Park Wilderness
- Rapidan Wildlife Management Area
- County Boundary Line

**Closed Shenandoah NP Trails**

Mill Prong Trail  
Mill Prong Horse Trail  
Stony Mountain Trail  
Fork Mountain Trail

Laurel Prong from Cat Knob intersection  
Upper Dark Hollow Trail (does NOT impact access to falls)

The lower Rapidan Fire Road beyond the portion open to bicycles



0 0.5 1 2 Miles