



Quaker Run Fire
VA-VAS-230102
PNQQ13 (1522)

IAP

Monday, November 13, 2023
0600-2000 hrs.

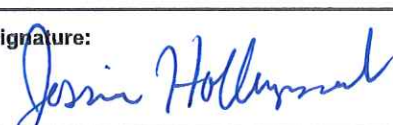
Incident Link Tree



INCIDENT OBJECTIVES (ICS 202)

| | | |
|---|---|--|
| 1. Incident Name: | 2. Operational Period: SATURDAY | |
| QUAKER RUN | Date/Time From: 11/13/2023 0600 MON | Date/Time To: 11/13/2023 2000 MON |
| 3. Objective(s): | | |
| <p>1. Maintain firefighter safety by adhering to the 10 Standard Fire Fighting Orders, 18 Watch-out Situations, LCES, and 2:1 work rest ratio.</p> <p>2. Provide for public safety, protection of private property, and critical infrastructure.</p> <p>3. Limit the growth of the 2023 Quaker Run Fire to the North of structures on Quaker Run Road, south of the structures on Finks Hollow Lane, east of the Rapidan Road and south of the upper Dark Hollow Trail.</p> <p>4. Minimize impact to the Rapidan River Area, protect Rapidan Camp (Camp Hoover) and the Fork Mountain Repeater site.</p> <p>5. In developing strategy, the potential degradation of wilderness character will be considered before, and given significantly more weight, than economic efficiency and convenience. MIST techniques will be used, and all off-trail vehicle use must be pre-approved by the Agency Rep.</p> <p>6. Implement fire management strategies which will mitigate and minimize disturbance to soils, cultural, and natural resource values within the park.</p> <p>7. Manage the fire(s) in a cost effective and efficient manner while keeping Safety paramount.</p> <p>8. Minimize smoke impacts to Skyline Drive and the neighboring communities where possible.</p> | | |
| 4. Operational Period Command Emphasis: | | |
| <p>Fire Conditions should dictate your actions. Priorities should be Safety of Firefighting resources and the public, utilize direct attack, with "MIST" tactics if possible.</p> <p>**Maintain situational awareness and ensure good communication practices. **</p> | | |
| General Situational Awareness: | | |
| <ul style="list-style-type: none"> • Long drives • Steep, windy roads • Critically dry fuels • Excessive drought • Cumulative fatigue | | |
| 5. Site Safety Plan Required? Yes <input type="checkbox"/> No <input checked="" type="checkbox"/> | | |
| Approved Site Safety Plan(s) Located | | |
| 6. Incident Action Plan (the items checked below are included in this Incident Action Plan): | | |
| <input checked="" type="checkbox"/> ICS 202 <input checked="" type="checkbox"/> ICS 203 <input checked="" type="checkbox"/> ICS 204 <input checked="" type="checkbox"/> ICS 205 <input type="checkbox"/> ICS 205A <input checked="" type="checkbox"/> ICS 206 | <input type="checkbox"/> ICS 207 <input type="checkbox"/> ICS 208 <input checked="" type="checkbox"/> ICS 220 <input checked="" type="checkbox"/> Map/Chart <input checked="" type="checkbox"/> Weather Forecast/Tides/Currents | Other Attachments: <input checked="" type="checkbox"/> DEMOB <input checked="" type="checkbox"/> FINANCE <input checked="" type="checkbox"/> INFORMATION <input type="checkbox"/> _____ |
| 7. Prepared by: JOCELYN HOWELL | Position/Title: RESL(T) | Signature: <i>Jocelyn Howell</i> |
| 8. Approved by Incident Commander: | Name: DEBORAH BEARD | Signature: <i>Deborah Beard</i> |
| ICS 202 | IAP Page | Date/Time: 11/12/2023 2000 |

ORGANIZATION ASSIGNMENT LIST (ICS 203)

| | | | |
|--|--|---|---|
| 1. Incident Name: | | 2. Operational Period: SATURDAY | |
| QUAKER RUN | | Date/Time From: 11/13/2023 0600 MON | Date/Time To: 11/13/2023 2000 MON |
| 3. Incident Commander(s) and Command Staff: | | 6. Logistics Section: | |
| | | CHIEF | DAVID MOODY CHRIS MCELLEND |
| IC/UC | DEBORAH BEARD CHAD STOVER | DEPUTY | CINDY SCHIFFER |
| DEPUTY | PAUL VARNEDOE (T) | FACILITIES UNIT | GENE-PAUL MATSON MAYRA MORENO |
| SAFETY OFFICER | PAUL CHURCHILL; BUDDY KELLEY LARRY HOLSOMBACK; TIM BENEDICT | SUPPLY UNIT | LEMUEL COOKSEY |
| INFORMATION OFFICER | BYRON HAIRE III; RICH REUSE; MICHELLE BURNETT (V) MADISON HEISER; DAVE STONE; GWEN BEAVAN; CATHY DOWD | ORDERING MANAGER | SHERRI KITE |
| LIAISON OFFICER | BRYAN SWANSON JEREMY EDWARDSON(T); JEREMY KNIGHTON (T) | RECEIVING/DISTRIBUTION MANAGER | JESSE OVERCASH |
| | | GROUND SUPPORT UNIT | TODD WALLER BRIAN TRUSS (T) |
| | | COMMUNICATIONS UNIT | PAUL NOA; CHRISTOPHER HAM (T) |
| | | RADIO OPERATOR | RACHEL NIELSEN TOM BOECKMANN |
| | | MEDICAL UNIT | BART WALKER JEFFREY CUMMINGS |
| | | SECURITY UNIT | PHILLIP TAGGART (T) |
| 4. Agency/Organization Representative(s): | | 7. Operations Section: | |
| Agency/Organization | Name | PLANNING OPS SECTION CHIEF | TYLER VAN ORMER |
| NPS | MISSY FORDER | FIELD OPS SECTION CHIEF | BRIAN ELAM JASON KLAWSKY (T) |
| VDOF | CHAD STOVER | | |
| MADISON COUNTY EMERGENCY MANAGEMENT | GAVIN HELME; BRIAN GORDON | BRANCH DIRECTOR I | DENNIS GASTON |
| MADISON COUNTY SHERIFF OFFICE | SHERIFF ERIK WEAVER | BRANCH DIRECTOR II | KEVIN GRODI |
| READ | ALAN WILLIAMS JOHN PEREZ | DIVISION/GROUP | A/H JON WILLOUGHBY D DAVID HARMON MATT BOSS (T) E HEATH THOMAS F PAT MURPHY G KIRBY WOOLFOLK |
| 5. Planning Section: | | 7b. Air Operations Branch: | |
| CHIEF | CAROL O'BRYAN; KEN STERNER | AIR OPS BRANCH DIRECTOR | JOHN MASON |
| DEPUTY | JAMES EHRLICH (T) | AIR SUPPORT SUPERVISOR | ALBERT FARIA |
| RESOURCES UNIT | MELONIE SELLERS; JOCELYN HOWELL (T) KELLY GOOD (T) | AIR ATTACK SUPERVISOR | GORDON GROSSLIGHT |
| STATUS CHECK-IN | NICOLE BRESNAHAN (V) | 8. Finance/Administration Section: | |
| SITUATION UNIT | SUSAN KETT | CHIEF | REGGIE LANIER JR |
| DEMOBILIZATION UNIT | JEFF DEMATTEIS | DEPUTY | LAURA WILSON |
| FIRE BEHAVIOR ANALYST | KELLY CAGLE | TIME UNIT | LIBBY BAGWELL; KAYLA CLARK LISA ECKERT (T) |
| TRAINING SPECIALIST | AL HOKE (V) | COMPENSATION UNIT | TERRI MCDONALD (V) |
| GIS SPECIALIST | CHRISTIAN VOSE (V) HESTER MALLONEE (T); BRIANNA GIBSON (T) | COST UNIT | TOM STEELE |
| TECHNOLOGY SUPPORT SPECIALIST | KEVIN CURRY WALTER WEBB | | |
| DOCUMENTATION UNIT | JESSICA HOLLINGSWORTH (V) | | |
| INCIDENT METEOROLOGIST | CHRISTIAN CASSELL CODY LEDBETTER (T) | | |
| AIR RESOURCE ADVISOR | MARGARET KEY THOMAS DELLA ROCCA | | |
| 9. Prepared By: | Name: JESSICA HOLLINGSWORTH | Position/Title: RESL | Signature:  |
| ICS 203 | IAP Page | Date/Time: 11/12/2023 0639 | |



INCIDENT Weather Forecast



FORECAST NO: 4

NAME OF FIRE: Quaker Run

PREDICTION FOR: Day Shift

UNIT: VA-VAS

SHIFT DATE: November 13, 2023

SIGNED: Cody Ledbetter

FORECAST ISSUED: 1800 hrs, November 12th, 2023

Incident Meteorologist Trainee

WEATHER DISCUSSION: A potent dry cold front will arrive at the fire around 1700 hours. This will bring an abrupt shift in wind direction and an increase in wind speeds. This will result in critical fire weather conditions through Tuesday afternoon. Before that though, a cold start to the morning under mostly clear skies. Should see very few clouds today as a very dry air mass starts to push into the region. Temperatures will recover and be a bit warmer than recent days, reaching near 60.

WEATHER FORECAST:

WEATHER: Mostly sunny skies expected today.

TEMPERATURES: Highs in the mid 50s on ridges and upper 50s to low 60s in the valleys.

HUMIDITY: 40 to 45%.

20 FT WINDS:

RIDGETOP - Southwest winds 5-10 mph, picking up to 12-18 mph and becoming west-northwest, around 1700 hours and gusting up to 25 mph.

SLOPE/VALLEY - Nearly calm in the morning, becoming south-southwest at 5 to 10 mph, then abruptly turning out of the west at 5 to 10 mph around 1700 hours.

HAINES INDEX: 5 (High)

STABILITY/INVERSION: Inversion weakening/breaking around 1000 hrs.

OUTLOOK FOR TONIGHT: On the ridgetops, winds turn out of the west tonight at 15-20 mph with occasional gusts up to 35 mph. For the slopes/valleys, west-northwest winds 5-10 mph, with occasional gusts up to 20 mph. Low temperatures in the mid 30s, with humidity recovering to 40-50 percent.

OUTLOOK FOR TUESDAY: Winds taper off around noon on Tuesday. However, much drier air moves in late morning into the afternoon, with RH values dropping to 20 to 30 percent. Winds 8 to 12 mph, with occasional gusts to 20 mph during the afternoon. High temperatures in the upper 50s to near 60.

EXTRA INFORMATION:

Sunrise: 0652

Sunset: 1702

FIRE BEHAVIOR FORECAST

| | |
|--|--|
| FORECAST NUMBER: 5 | TYPE OF FIRE: Wildland, Type 1 |
| FIRE NAME: Quaker Run | OPERATIONAL PERIOD: Day Shift |
| DATE ISSUED: Sun Nov 12, 2023 Time Issued: 1700 | SHIFT DATE: Mon Nov 13, 2023 |
| UNIT: Virginia DOF and Shenandoah NP | SIGNED: <i>Kelly Cagle</i> FBAN |

WEATHER SUMMARY:

| Local Thresholds – Watch Outs | Forecast for Today |
|---|---|
| 7 Days or > Since Rainfall RH < 30 Winds > 15 mph | Min RH 40%-Winds WNW 15 G 25- Days Since Rain 3 |

FIRE BEHAVIOR:

Minimal behavior expected during the day shift, but fuels are drying and could become modestly available during the afternoon – especially on a south facing slope. Cold temps this morning will delay fuel availability somewhat. Modest fire spread could occur on a south facing slope during mid afternoon in a perfect location/situation. Overall, the threat of significant fire spread today is low and will be mostly confined to isolated smokes and smoldering. **Fire danger increases overnight and the threat to containment lines increases as a strong front with breezy winds and low (for nighttime) humidities are expected.**

These outputs assume dry fuel on a south facing slope. Other areas will have limited fire spread.

| Fire Type | Rate of Spread | Flame Length |
|------------------|------------------------|--------------|
| Backing | 1 chain per hour | 1 to 2' |
| Uphill 20% slope | 4 to 6 chains per hour | 2 to 3' |
| Uphill 40% slope | 4 to 8 chains per hour | 2 to 3' |

Maximum spotting distance = < 50 feet

Peak Probability of Ignition = 30%

Specific Areas of Concern:

Branch 1 (Division Alpha, Golf, Hotel)- Minimal fire behavior expected during day shift. Isolated smoke or smolder possible. Minor open flame possible. Fuels may dry enough to provide a very limited burn window mid afternoon on south facing slopes. Leaf drop continues and fireline condition should be monitored for leaf accumulation. **Elevated fire conditions expected overnight. Mop-up of heat near containment lines critical today.**

Branch 2 (Division Delta, Echo, Foxtrot) Minimal fire behavior expected, however, fuels might dry enough to support limited fire spread during mid afternoon. Isolated smokes and smoldering possible. Leaf drop continues and firelines should be monitored for fuel accumulation. – especially near areas with duff/ground fire. **Elevated fire conditions expected overnight. Mop-up of heat near containment lines critical today.**

Air Operations:

Suitable aviation conditions expected after a light inversion clears by mid morning.

Fire Behavior Safety Message:

Watch Out Situation # 15 – *Wind increases or changes directions.* Both are expected today – increased wind speed and a change in direction from SW to NW. The change is expected to be abrupt and significant, and is expected to occur near the end of the day. Plan accordingly as far as fire behavior and personal safety.

Division/Group Assignment List (ICS 204 WF)
Controlled Unclassified Information//Basic

| | | | | | | |
|--|-----------------------------------|--------------------------------------|---------------------------|-------------------|------------------|------|
| 1. Incident Name: | | 3. | | | | |
| QUAKER RUN | | Branch: | | Division/Group | | |
| 2. Operational Period: SATURDAY | | 1 | | A/H | | |
| Date/Time From: | | Date/Time To: | | | | |
| 11/13/2023 0600 | MON | 11/13/2023 2000 | MON | | | |
| 4. Operations Personnel | | | | | | |
| FIELD OPS | BRIAN ELAM JASON KLAWINSKY (T) | | DIVISION/GROUP SUPERVISOR | | JON WILLOUGHBY | |
| AIR ATTACK SUPERVISOR | GORDON GROSSLIGHT | | OPERATIONS CHIEF | | TYLER VAN ORMER | |
| BRANCH DIRECTOR | DENNIS GASTON | | | | | |
| 5. Resources Assigned this Period | | | | | | |
| Strike Team / Task Force / Resource Designator | LWD | Leader | Number Persons | Drop Off PT./Time | Pick Up PT./Time | |
| HCIA EASTERN REGION MOD | 11/16 | HEATHER TUCK | 9 | /0600 | /2000 | |
| C-20001 CR2I DIAMOND FIRE NCC | 11/23 | JONATHAN ALVAREZ | 20 | /0600 | /2000 | |
| E-20008 ENG6 CHIHUAHUA | 11/25 | RORY BIGROPE | 3 | /0600 | /2000 | |
| UTV APP30-ST | 11/22 | | | /0600 | /2000 | |
| UTV ALB30-ST | 11/22 | | | /0600 | /2000 | |
| UTV KWM30-ST | 11/16 | | | /0600 | /2000 | |
| UTV LUN30-ST | 11/22 | | | /0600 | /2000 | |
| UTV DIN30 | 11/16 | | | /0600 | /2000 | |
| FIA VA-ST | 11/14 | LINWOOD ROGERS | 1 | /0600 | /2000 | |
| FIA VA-ST | 11/14 | CHRIS WEST | 1 | /0600 | /2000 | |
| SOFC | 11/21 | LARRY HOLSOMBACK | 1 | /0600 | /2000 | |
| MEDIC 10 | 11/25 | OMAR DOMINGUEZ | 2 | FOBS/0600 | FOBS/2000 | |
| 6. Control Operations/Work Assignments: | | | | | | |
| Task: Patrol fire lines and put out any hot spots found along the fire line to one chain in from line. | | | | | | |
| Purpose: To extinguish any open flame or heat that could get across the established fire line. | | | | | | |
| End State: To stop fire progression towards private property and structures to the east and south | | | | | | |
| 7. Special Instructions: | | | | | | |
| Remove all unnecessary flagging and trash | | | | | | |
| IWI Instructions | | | | | | |
| 8. Division/Group Communication Summary | | | | | | |
| Function | Channel | RX Frequency N/W | RX Tone/NAC | TX Frequency N/W | TX Tone/NAC | Mode |
| COMMAND | 1 (CMD-1) | 168.4750 | 156.7 | 165.4000 | 156.7 | A |
| COMMAND | 2 (CMD-2) | 170.4250 | 156.7 | 168.0750 | 156.7 | A |
| TACTICAL | 3 (TAC-1) | 168.0500 | 156.7 | 168.0500 | 156.7 | A |
| AIR TO GROUND | 14 (PRI A/G) | 168.4000 | | 168.4000 | | A |
| AIR TO GROUND | 15 (SEC A/G) | 169.2000 | | 169.2000 | | A |
| AIR GUARD | 16 (AIRGAURD) | 168.6250 | | 168.6250 | 110.9 | A |
| 9. Prepared By (Resource Unit Leader) | | Approved By (Planning Section Chief) | | Date | Time | |
| JOCELYN HOWELL RESL(T) | | CAROL O'BRYAN PSCC | | 11/12/2023 | 0639 | |

Division/Group Assignment List (ICS 204 WF)
Controlled Unclassified Information//Basic

| 1. Incident Name: | | | 3. | | | |
|--|-----------------------------------|--------------------------------------|--------------------------------------|------------------|-----------------|------|
| QUAKER RUN | | | Branch: | | Division/Group | |
| 2. Operational Period: SATURDAY | | | 1 | | A/H | |
| Date/Time From: 11/13/2023 0600 MON | | Date/Time To: 11/13/2023 2000 MON | | | | |
| 4. Operations Personnel | | | | | | |
| FIELD OPS | BRIAN ELAM JASON KLAWINSKY (T) | | DIVISION/GROUP SUPERVISOR | | JON WILLOUGHBY | |
| AIR ATTACK SUPERVISOR | GORDON GROSSLIGHT | | OPERATIONS CHIEF | | TYLER VAN ORMER | |
| BRANCH DIRECTOR | DENNIS GASTON | | | | | |
| 7. Special Instructions: | | | | | | |
| <p>1. Take charge of scene 2. Contact DIV Sup and Quaker Run Communications on Command 3. Follow Incident Medical Report (8 line) 4. If unable to reach Quaker Run communications on command, call (208) 901-6177</p> | | | | | | |
| 8. Division/Group Communication Summary | | | | | | |
| Function | Channel | RX Frequency N/W | RX Tone/NAC | TX Frequency N/W | TX Tone/NAC | Mode |
| COMMAND | 1 (CMD-1) | 168.4750 | 156.7 | 165.4000 | 156.7 | A |
| COMMAND | 2 (CMD-2) | 170.4250 | 156.7 | 168.0750 | 156.7 | A |
| TACTICAL | 3 (TAC-1) | 168.0500 | 156.7 | 168.0500 | 156.7 | A |
| AIR TO GROUND | 14 (PRI A/G) | 168.4000 | | 168.4000 | | A |
| AIR TO GROUND | 15 (SEC A/G) | 169.2000 | | 169.2000 | | A |
| AIR GUARD | 16 (AIRGAURD) | 168.6250 | | 168.6250 | 110.9 | A |
| 9. Prepared By (Resource Unit Leader) | | | Approved By (Planning Section Chief) | | Date | Time |
| JOCELYN HOWELL RESL(T) | | | CAROL O'BRYAN PSCC | | 11/12/2023 | 0639 |

Division/Group Assignment List (ICS 204 WF)
Controlled Unclassified Information//Basic

| | | | | | | |
|--|---------------|--------------------------------------|--------------------------------------|---------------------------|-------------------|-------------------------------|
| 1. Incident Name: | | | 3. | | | |
| QUAKER RUN | | | Branch: | | Division/Group | |
| 2. Operational Period: SATURDAY | | | 2 | | D | |
| Date/Time From: 11/13/2023 0600 MON | | Date/Time To: 11/13/2023 2000 MON | | | | |
| 4. Operations Personnel | | | | | | |
| FIELD OPS | | BRIAN ELAM JASON KLAWINSKY (T) | | DIVISION/GROUP SUPERVISOR | | DAVID HARMON MATT BOSS (T) |
| AIR ATTACK SUPERVISOR | | GORDON GROSSLIGHT | | OPERATIONS CHIEF | | TYLER VAN ORMER |
| BRANCH DIRECTOR | | KEVIN GRODI | | | | |
| 5. Resources Assigned this Period | | | | | | |
| Strike Team / Task Force / Resource Designator | | LWD | Leader | Number Persons | Drop Off PT./Time | Pick Up PT./Time |
| NPS CREW #1 SHENANDOAH | | 11/22 | LANE GIBBONS | 10 | /0600 | /2000 |
| TFLD | | 11/14 | RUSTY DUNHAM | 1 | /0600 | /2000 |
| SOF2 | | 11/22 | LARRY HOLSOMBACK | 1 | /0600 | /2000 |
| MEDIC 10 | | 11/25 | OMAR DOMINGUEZ | 2 | FOBS/0600 | FOBS/2000 |
| 6. Control Operations/Work Assignments: | | | | | | |
| Task: Patrol, monitor and mop up fire lines and put out any open flame or hot spots found to with in one chain of line | | | | | | |
| Purpose: Keep fire off of the Shenandoah NP. | | | | | | |
| End State: To prevent fire from getting onto the Shenandoah NP and damaging any resources or historical sites. | | | | | | |
| 7. Special Instructions: | | | | | | |
| Rapidan Gate Code: 0314 | | | | | | |
| <ul style="list-style-type: none"> Keep fire east of Rapidan Road. Remove all unnecessary flagging and trash IWI Instructions 1.Take charge of scene 2.Contact DIV Sup and Quaker Run Communications on Command 3.Follow Incident Medical Report (8 line) 4. If unable to reach Quaker Run communications on command, call (208) 901-6177 | | | | | | |
| 8. Division/Group Communication Summary | | | | | | |
| Function | Channel | RX Frequency N/W | RX Tone/NAC | TX Frequency N/W | TX Tone/NAC | Mode |
| COMMAND | 1 (CMD-1) | 168.4750 | 156.7 | 165.4000 | 156.7 | A |
| COMMAND | 2 (CMD-2) | 170.4250 | 156.7 | 168.0750 | 156.7 | A |
| TACTICAL | 4 (TAC-2) | 168.2000 | 156.7 | 168.2000 | 156.7 | A |
| AIR TO GROUND | 14 (PRI A/G) | 168.4000 | | 168.4000 | | A |
| AIR TO GROUND | 15 (SEC A/G) | 169.2000 | | 169.2000 | | A |
| AIR GUARD | 16 (AIRGUARD) | 168.6250 | | 168.6250 | 110.9 | A |
| 9. Prepared By (Resource Unit Leader) | | | Approved By (Planning Section Chief) | | Date | Time |
| JOCELYN HOWELL RESL(T) | | | CAROL O'BRYAN PSCC | | 11/12/2023 | 0639 |

Division/Group Assignment List (ICS 204 WF)
Controlled Unclassified Information//Basic

| | | | | | | |
|--|---------------|--------------------------------------|---|----------------------------------|--------------------------------|------------------|
| 1. Incident Name: | | | 3. | | | |
| QUAKER RUN | | | Branch: 2 | | Division/Group E | |
| 2. Operational Period: SATURDAY | | | | | | |
| Date/Time From: 11/13/2023 0600 MON | | Date/Time To: 11/13/2023 2000 MON | | | | |
| 4. Operations Personnel | | | | | | |
| FIELD OPS | | BRIAN ELAM JASON KLAWINSKY (T) | | DIVISION/GROUP SUPERVISOR | | HEATH THOMAS |
| AIR ATTACK SUPERVISOR | | GORDON GROSSLIGHT | | OPERATIONS CHIEF | | TYLER VAN ORMER |
| BRANCH DIRECTOR | | KEVIN GRODI | | | | |
| 5. Resources Assigned this Period | | | | | | |
| Strike Team / Task Force / Resource Designator | | LWD | Leader | Number Persons | Drop Off PT./Time | Pick Up PT./Time |
| HC2 VA DCR | | 11/13 | KERRY O'NEIL | 2 | /0600 | /2000 |
| SOF2 | | 11/22 | TIM BENEDICT | 1 | /0600 | /2000 |
| REMS ROANOKE FD | | 11/24 | MIKE ROTH | 4 | FOBS/0600 | FOBS/2000 |
| 6. Control Operations/Work Assignments: | | | | | | |
| <p>Task: Patrol, monitor and mop up to one chain in from the fire line. Purpose: Keep fire from crossing control line and threatening Stoney Mtn. End State: To keep fire in its existing foot print and prevent fire from damaging resources on the Shenandoah NP.</p> | | | | | | |
| 7. Special Instructions: | | | | | | |
| <p>Remove all unnecessary flagging and trash IWI Instructions 1. Take charge of scene 2. Contact DIV Sup and Quaker Run Communications on Command 3. Follow Incident Medical Report (8 line) 4. If unable to reach Quaker Run communications on command, call (208) 901-6177</p> | | | | | | |
| 8. Division/Group Communication Summary | | | | | | |
| Function | Channel | RX Frequency N/W | RX Tone/NAC | TX Frequency N/W | TX Tone/NAC | Mode |
| COMMAND | 1 (CMD-1) | 168.4750 | 156.7 | 165.4000 | 156.7 | A |
| COMMAND | 2 (CMD-2) | 170.4250 | 156.7 | 168.0750 | 156.7 | A |
| TACTICAL | 5 (TAC-3) | 168.6000 | 156.7 | 168.6000 | 156.7 | A |
| AIR TO GROUND | 14 (PRI A/G) | 168.4000 | | 168.4000 | | A |
| AIR TO GROUND | 15 (SEC A/G) | 169.2000 | | 169.2000 | | A |
| AIR GUARD | 16 (AIRGUARD) | 168.6250 | | 168.6250 | 110.9 | A |
| 9. Prepared By (Resource Unit Leader) | | | Approved By (Planning Section Chief) | | Date | Time |
| JOCELYN HOWELL RESL(T) | | | CAROL O'BRYAN PSCC | | 11/12/2023 | 0639 |

Division/Group Assignment List (ICS 204 WF)
Controlled Unclassified Information//Basic

| | | | | | | |
|--|--------------|--------------------------------------|--------------------------------------|---------------------------|-------------------|------------------|
| 1. Incident Name: | | | 3. | | | |
| QUAKER RUN | | | Branch: | | Division/Group | |
| 2. Operational Period: SATURDAY | | | 1 | | F | |
| Date/Time From: 11/13/2023 0600 MON | | Date/Time To: 11/13/2023 2000 MON | | | | |
| 4. Operations Personnel | | | | | | |
| FIELD OPS | | BRIAN ELAM JASON KLAWINSKY | | DIVISION/GROUP SUPERVISOR | | PAT MURPHY |
| AIR ATTACK SUPERVISOR | | GORDON GROSSLIGHT | | OPERATIONS CHIEF | | TYLER VAN ORMER |
| BRANCH DIRECTOR | | DENNIS GASTON | | | | |
| 5. Resources Assigned this Period | | | | | | |
| Strike Team / Task Force / Resource Designator | | LWD | Leader | Number Persons | Drop Off PT./Time | Pick Up PT./Time |
| CR2I TEXAS CANYON | | 11/23 | DANNY BURKLANDER | 10 | /0600 | /2000 |
| CENTRAL REGION TASK FORCE | | 11/16 | BJ BUTLER | 7 | /0600 | /2000 |
| ENG6 HURRICANE VALLEY BRUSH 471 | | 11/25 | TYLER HIRSHFELD | 2 | /0600 | /2000 |
| DOZ2 MAD50-ST | | 11/14 | THOMAS REEVES | 1 | /0600 | /2000 |
| UTV MAD30-ST | | 11/13 | | | /0600 | /2000 |
| SOF2 | | 11/22 | TIM BENEDICT | 1 | /0600 | /2000 |
| REMS | | 11/23 | MIKE ROTH | 4 | FOBS/0600 | FOBS/2000 |
| MEDIC 10 | | 11/25 | OMAR DOMINGUEZ | 2 | FOBS/0600 | FOBS/2000 |
| 6. Control Operations/Work Assignments: | | | | | | |
| <p>Task: Patrol, Monitor and Mop up one chain in from fire line. Purpose: Remove any threats to the fire line so fire will not progress towards the Shenandoah NP or private property. End State: Stop fire from moving west or north and threatening private property or the Shenandoah NP.</p> | | | | | | |
| 7. Special Instructions: | | | | | | |
| <p>Remove all unnecessary flagging and trash IWI Instructions 1.Take charge of scene 2.Contact DIV Sup and Quaker Run Communications on Command 3.Follow Incident Medical Report (8 line) 4.If unable to reach Quaker Run communications on command, call (208) 901-6177</p> | | | | | | |
| 8. Division/Group Communication Summary | | | | | | |
| Function | Channel | RX Frequency N/W | RX Tone/NAC | TX Frequency N/W | TX Tone/NAC | Mode |
| COMMAND | 1 (CMD-1) | 168.4750 | 156.7 | 165.4000 | 156.7 | A |
| COMMAND | 2 (CMD-2) | 170.4250 | 156.7 | 168.0750 | 156.7 | A |
| TACTICAL | 6 (TAC-4) | 166.7250 | 156.7 | 166.7250 | 156.7 | A |
| AIR TO GROUND | 14 (PRI A/G) | 168.4000 | | 168.4000 | | A |
| AIR TO GROUND | 15 (SEC A/G) | 169.2000 | | 169.2000 | | A |
| AIR GUARD | 16 AIRGUARD) | 168.6250 | | 168.6250 | 110.9 | A |
| 9. Prepared By (Resource Unit Leader) | | | Approved By (Planning Section Chief) | | Date | Time |
| JOCELYN HOWELL RESL(T) | | | CAROL O'BRYAN PSCC | | 11/12/2023 | 0639 |

Division/Group Assignment List (ICS 204 WF)

Controlled Unclassified Information//Basic

| | | | | | | |
|--|-----------------------------------|--------------------------------------|---------------------------|-------------------|------------------|------|
| 1. Incident Name: | | 3. | | | | |
| QUAKER RUN | | Branch: | | Division/Group | | |
| 2. Operational Period: SATURDAY | | 1 | | G | | |
| Date/Time From: 11/13/2023 0600 MON | | Date/Time To: 11/13/2023 2000 MON | | | | |
| 4. Operations Personnel | | | | | | |
| FIELD OPS | BRIAN ELAM JASON KLAWINSKY (T) | | DIVISION/GROUP SUPERVISOR | KIRBY WOOLFOLK | | |
| AIR ATTACK SUPERVISOR | GORDON GROSSLIGHT | | OPERATIONS CHIEF | TYLER VAN ORMER | | |
| BRANCH DIRECTOR | DENNIS GASTON | | | | | |
| 5. Resources Assigned this Period | | | | | | |
| Strike Team / Task Force / Resource Designator | LWD | Leader | Number Persons | Drop Off PT./Time | Pick Up PT./Time | |
| ENG6 E-606 | 11/14 | ZACK REYNOLDS | 1 | /0600 | /2000 | |
| ENG6 E-607 | 11/14 | CONNER GOOLSBY | 1 | /0600 | /2000 | |
| FFT | 11/13 | MATT DRAKE | 1 | /0600 | /2000 | |
| FFT | 11/13 | T.C. ORMAN | 1 | /0600 | /2000 | |
| FFT | 11/13 | JOSIAH DONALDSON | 1 | /0600 | /2000 | |
| SOFR | 11/14 | MATTHEW MARTIN | 1 | /0600 | /2000 | |
| MEDIC 10 | 11/25 | OMAR DOMINGUEZ | 2 | FOBS/0600 | FOBS/2000 | |
| 6. Control Operations/Work Assignments: | | | | | | |
| Task: Patrol, monitor and mop-up one chain in from fire line. | | | | | | |
| Purpose: Stop fire from threatening private property and structures. | | | | | | |
| End State: To keep fire in its existing fire foot print, and remove threat to private property and structures. | | | | | | |
| 7. Special Instructions: | | | | | | |
| Remove all unnecessary flagging and trash | | | | | | |
| IWI Instructions | | | | | | |
| 1. Take charge of scene | | | | | | |
| 2. Contact DIV Sup and Quaker Run Communications on Command | | | | | | |
| 3. Follow Incident Medical Report (8 line) | | | | | | |
| 4. If unable to reach Quaker Run communications on command, call (208) 901-6177 | | | | | | |
| 8. Division/Group Communication Summary | | | | | | |
| Function | Channel | RX Frequency N/W | RX Tone/NAC | TX Frequency N/W | TX Tone/NAC | Mode |
| COMMAND | 1 (CMD-1) | 168.4750 | 156.7 | 165.4000 | 156.7 | A |
| COMMAND | 2 (CMD-2) | 170.4250 | 156.7 | 168.0750 | 156.7 | A |
| TACTICAL | 7 (TAC-5) | 166.7750 | 156.7 | 166.7750 | 156.7 | A |
| AIR TO GROUND | 14 (PRI A/G) | 168.4000 | | 168.4000 | | A |
| AIR TO GROUND | 15 (SEC A/G) | 169.2000 | | 169.2000 | | A |
| AIR TO GROUND | 16 (AIRGUARD) | 168.6250 | | 168.6250 | 110.9 | A |
| 9. Prepared By (Resource Unit Leader) | | Approved By (Planning Section Chief) | | Date | Time | |
| JOCELYN HOWELL RESL(T) | | CAROL O'BRYAN PSCC | | 11/12/2023 | 0639 | |



HEALTH AND SAFETY MESSAGE

SAFETY is YOU & ME

We are ALL accountable for SAFE behaviors

“Luck Runs Out but Safety is good for life”

INCIDENT: Quaker Run

DATE: November 13, 2023

Major Hazards and Risks: *Wind Gusts & Trigger Points*

Weather “Wind”:

Ask yourself these questions:

Do I know the wind direction(s) today?

Do I understand the Incident Meteorologist forecast for this operational shift?

Am I basing my actions on current and forecasted weather?

Am I clear on the Fire Behavior Analysis instructions and predictions?

Wind Gusts: There are high wind gusts predicted late in the day today, Wind gusts from 18 to 25 mph could be possible on the high ridge tops and only reducing 10 – 20 mph in the valleys. If you’re in an area where the winds line with the valley bottoms you may see very strong winds where the canopy offers virtually no protection. Consider that trees may have been weakened from the fire. Look up at the surrounding area when you park your vehicle to be sure you’re not in danger of being hit by falling trees or debris.

Trigger Points: Today when you’re in the field, be sure to establish trigger points for reposition to secure areas in response to high winds. Remember, trigger points are not decision-makers but serve as predetermined cues to prompt you to re-evaluate the current and potential situation. They can help you to determine and implement the proper course of action.

Fire Order of the Day:

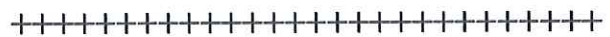
Base all actions on current and expected behavior of the fire.

Crew Briefing - It is essential that everyone on the fireline receives a thorough briefing.

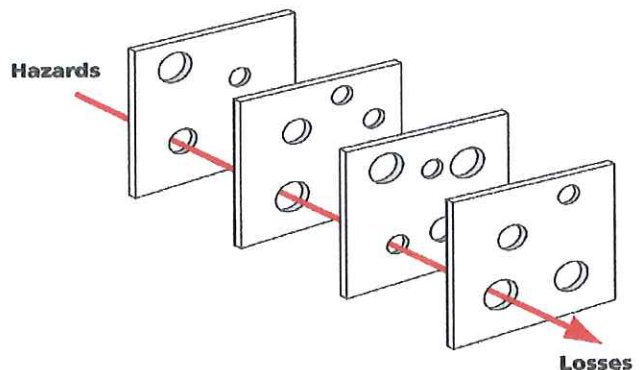
Supervisors: Ensure that the briefing includes the forecasted weather, fire behavior, safety message, communications plan, and the Special Instructions on the Division Assignment.

Situation Awareness

- Speak up if you see something that looks wrong!
- Get a good briefing prior to beginning your task!
- Ask if you don’t understand!



Don’t let the holes line up!





Carbon Monoxide Exposure – Safety Message

Carbon monoxide (CO) is a colorless, odorless gas. Exposure to CO from wildland fire smoke and other sources (exhaust from chainsaws, engines, or pumps) can present significant safety hazards to firefighters. As CO accumulates in the blood, it binds to the hemoglobin and displaces the oxygen in the blood. This prevents oxygen from reaching tissues and organs. When overexposed to CO, there can be numerous physiological and mental effects that are variable and nonspecific.

CO poisoning signs and symptoms:

- Headaches
- Altered mental status
- Cognitive and sensory disturbances
- Fatigue and drowsiness
- Dizziness and weakness
- Shortness of breath
- Chest Pain
- Nausea and vomiting

**Symptoms of CO exposure can be similar to symptoms of COVID-19 and are often described as “flu-like”*

When might you be over-exposed to CO?

- In conditions such as heavy smoke inversions that last for multiple days.
- When large amounts of acres are burning/smoldering nearby, higher concentrations of CO are found in close proximities to actively burning fuel.
- Hazardous air quality index (AQI) levels can sometimes indicate elevated CO concentrations.

How can you mitigate exposure to CO?



Monitor yourself and your crewmembers for signs and symptoms of CO exposure and contact your supervisor or seek prompt medical help if you suspect CO poisoning.



Moving to cleaner air will help displace the CO in your blood. It takes approximately 4- 6 hours for half of the CO to be removed from your body.

Mitigating smoke hazards on an incident:

- Camp placements
 - Avoid locating camps within a 3-mile perimeter of fire or directly down-drainage.
 - Avoid locating camps in valley, low-lying, or inversion-prone areas.
 - Locate camps on benches or above drainages can reduce smoke exposure.
- Allow resources to rotate out of smoky camps to cleaner air for adequate recovery time.
- Allow and/or facilitate less smoky sleeping areas (facilities with filtered air, sleeping trailer).
- Rotate resources in and out of areas and/or shorten shifts during heavy smoke conditions.
- Downwind and upwind divisions of a fire typically have significantly different levels of smoke which can be used to manage smoke exposure.
- Minimize mop-up whenever possible and monitor job tasks such as direct fireline operations, sawing, swamping, lighting, and holding.

The Air Resource Advisors (ARA) are the central point for assisting Incident Management Teams and Agency Administrators with monitoring and mitigating smoke exposure from particulate matter and CO and helping to develop mitigation strategies. Please contact [redacted] with any questions or concerns about smoke exposure.

AIR OPERATIONS SUMMARY ICS 220

Prepared By: John Mason

Prepared Date: 11/12/2022

Prepared Time: 1800

| | | | | | |
|---|--|----------------------------|--------------------------|------------------------|-----------------------|
| 1. INCIDENT NAME: Quaker Run | 2. OPS PERIOD DATE: 11/13/23 | START TIME: 0800 | END TIME: 1800 | SUNRISE 0651 | SUNSET 1702 |
|---|--|----------------------------|--------------------------|------------------------|-----------------------|

| | | |
|--|---|--|
| 3. REMARKS and RISK MITIGATIONS: -All missions will be analyzed in terms of hazards and risks. - Make informed risk acceptance decisions. -Insure to brief for all IA missions to include new frequencies, ground contacts and other aircraft. -High level to low level recon of each new LZ/Dipsite *TRACK WATER SOURCE USE ON COST SUMMARIES FOR EACH DIP SITE. - All aircraft requests go through HEBM if ATGS is not operational. - Request ATGS through Operations. | 4. READY ALERT AIRCRAFT: See Medical Plan | 5. TFR # 3/7678 5 nm Radial from 38 28.5' x 78 20.7' Freq: 122.925 Surface > 6,500 MSL 0800-1800 Local |
|--|---|--|

| 6. PERSONNEL | NAME | PHONE # | 7. FREQUENCIES | AM | FM | 8. FIXED-WING |
|----------------------------------|-------------------|----------------|----------------------------------|-----------|--------------------------|--|
| AOBD | John Mason | 865-336-6664 | A/A (TFR/IA) | 122.925 | | Air Attack: 16KW / Beech C90A / Base: CRJ |
| ASGS | Albert Faria | 907-419-5415 | A/A | 134.525 | | Lead Planes/Airtankers/Scoopers - Order through Air Attack. If air attack is not up order through AOBD. |
| ATGS | Gordon Grosslight | 719-431-1389 | A/A | 126.525 | | Tankers: |
| HEBM | Marc Rudkin | 307-287-0440 | A/G Command (Primary) | | 168.4000 | T-104 / DC 9-87 / Base: CHA (*Off Sunday) T-107 / MD-87 / Base: CHA (*Off Saturday) T-167 / RJ-85 / Base: CHA (*Off Monday) T-41 / MD-87 / Base: CHA (*Off Friday) Manager: Doug Ivey 423-892-6861 |
| | | | A/G Tactical (Secondary) | | 169.2000 | |
| | | | DECK | | 163.100 | Costs to: 2023.guakerrun.finance@firenet.gov |
| VA-VIC Dispatch -Aircraft | Sara | 434-423-2008 | AIRGUARD (emergency only) | | 168.6250 TX Tone110.9 | |

9.HELICOPTERS

| FAA N# | T | MAKE/ MODEL | BASE | AVAIL | START | REMARKS | FAA N# | T | MAKE/ MODEL | BASE | AVAIL | START | REMARKS |
|---------------|----------|--------------------|-------------|--------------|--------------|----------------|---------------|----------|--------------------|-------------|--------------|--------------|----------------|
| 318MG | 3 | AS350B3 | OMH | 0800 | 0830 | Recon / Bucket | 767NA | 1 | K-1200 | OMH | 0800 | 0830 | Bucket |

INCIDENT RADIO COMMUNICATIONS PLAN (ICS 205)
Controlled Unclassified Information/Basic

| 1. Incident Name: | | 2. Date/Time Prepared: | | 3. Operational Period: | | DAY & NIGHT | | | | | |
|--|------|------------------------|-------------------------------|------------------------------------|----------|-------------|----------|-------------------------------|------------------|-------------------------------|--|
| Quaker Run Fire | | Date: 11/12/23 | Date/Time From: 11/13/23 0630 | Date/Time To: 11/13/23 2000 | | | | | | | |
| | | Time: 0900 | | | | | | | | | |
| 4. Basic Radio Channel Use: | | | | | | | | | | | |
| Zone Group | Ch # | Function | Channel Name | Assignment | RX Freq | RX Tone/NAC | TX Freq | TX Tone/NAC | Mode (A,D, or M) | Remarks | |
| 1 | 1 | COMMAND | CMD - 1 | COMMAND NET | 168.4750 | 156.7 | 165.4000 | 156.7 | A | Command Repeater | |
| 1 | 2 | COMMAND | CMD - 2 | COMMAND NET | 170.4250 | 156.7 | 168.0750 | 156.7 | A | Command Repeater | |
| 1 | 3 | TACTICAL | TAC - 1 | DIV - A/H | 168.0500 | 156.7 | 168.0500 | 156.7 | A | DIV A/H | |
| 1 | 4 | TACTICAL | TAC - 2 | DIV - D | 168.2000 | 156.7 | 168.2000 | 156.7 | A | DIV - D | |
| 1 | 5 | TACTICAL | TAC - 3 | DIV - E | 168.6000 | 156.7 | 168.6000 | 156.7 | A | DIV - E | |
| 1 | 6 | TACTICAL | TAC - 4 | DIV - F | 166.7250 | 156.7 | 166.7250 | 156.7 | A | DIV - F | |
| 1 | 7 | TACTICAL | TAC - 5 | DIV - G | 166.7750 | 156.7 | 166.7750 | 156.7 | A | DIV - G | |
| 1 | 8 | TACTICAL | TAC - 6 | UNASSIGNED | 168.2500 | 156.7 | 168.2500 | 156.7 | A | TAC - 6 | |
| 1 | 9 | | | | | | | | | | |
| 1 | 10 | | | | | | | | | | |
| 1 | 11 | | | | | | | | | | |
| 1 | 12 | | | | | | | | | | |
| 1 | 13 | | | | | | | | | | |
| 1 | 14 | AIR TO GROUND | PRI A/G | PRIMARY A/G | 168.4000 | NONE | 168.4000 | NONE | A | FOR AERIAL RECON | |
| 1 | 15 | AIR TO GROUND | SEC A/G | SECONDARY A/G | 169.2000 | NONE | 169.2000 | NONE | A | FOR WATER DROP OPERATIONS | |
| 1 | 16 | AIRGUARD | AIRGUARD | EMERGENCY USE | 168.6250 | NONE | 168.6250 | 110.9 | A | EMERGENCY HAILING OF AIRCRAFT | |
| 5. Special Instructions: | | | | | | | | | | | |
| 6. Prepared By (Communications Unit Leader) | | | | Name: PAUL NOA, SA-IMT GOLD | | | | Signature: <i>Paul J. Noa</i> | | Date/Time: 11/12/23 / 0900 | |
| ICS 205 | | | | | | | | IAP Page | | | |

MEDICAL PLAN (ICS 206 WF)
Controlled Unclassified Information//Basic

| | | | | | | | | | |
|--|---------------------------------|---|---------------------------------------|--|---------------------------------|---------------------------------------|-------------------------------------|-------------------------------------|---|
| 1. Incident Project Name | | | | 2. Operational Period | | | | | |
| Quaker Run Fire | | | | Date/Time | | 11/13/23 0600-2000 | | | |
| 3. Ambulance Services | | | | | | | | | |
| Name | | Complete Address | | Phone & EMS Frequency | | Advanced Life Support (ALS) Yes No | | | |
| Madison County EMS | | 1449 North Main Street Madison, VA 22727 | | 540-948-5161 | | <input checked="" type="checkbox"/> | <input type="checkbox"/> | | |
| Medical Jets International | | 505 E US Hwy 80 Forney, Tx 75126 | | 713-572-5196 | | <input checked="" type="checkbox"/> | <input type="checkbox"/> | | |
| 4. Air Ambulance Services | | | | | | | | | |
| Name | | Phone | | Type of Aircraft & Capability | | | | | |
| UVA Pegasus Air (UVA) | | 800-552-1826 | | EC135 ALS critical care- Charlottesville | | | | | |
| PHI | | 800-258-8181 | | ALS Critical Care | | | | | |
| 5. Hospitals | | | | | | | | | |
| Name Complete Address | | GPS Datum – WGS 84 Coordinate Standard Degrees Declinal Minutes | | Travel Time Air Gnd. | | Helipad Yes No | | Level of Care Facility | |
| UVA Culpeper 501 Sunset Ln, Culpeper, VA 22701 | | Lat: 38°27'16.43"N Long: 78° 0'51.64"W | 10 min | 30 min | 540-829-4183 (ED Rn station) | | <input checked="" type="checkbox"/> | <input type="checkbox"/> | 24 hr. ED |
| UVA Charlottesville 1215 Lee Street, Charlottesville, Va | | Lat: 38° 1'51.38"N Long: 78°29'50.21"W | 15 min N/A | 60 min | 434-924-9287 med com | | <input checked="" type="checkbox"/> | <input type="checkbox"/> | Level 1 Trauma |
| VCU burn center 1213 E Clay St, Richmond, VA 23219 | | Lat: 37°32'25.85"N Long: 77°25'55.10"W | 45 min | 120 min | 866-628-9337 burn center # | | <input checked="" type="checkbox"/> | <input type="checkbox"/> | Level 1 TC and Burn Center |
| Orange Family Practice 2503 s Seminole Trail, Madison, VA | | Lat: 38°21'2.41"N Long: 78°16'51.15"W | NA | 10 | 540-948-0005 (M-F 0730-1630) | | <input type="checkbox"/> | <input checked="" type="checkbox"/> | Family practice- "urgent care" walk in |
| 6. Division Branch Group | | Area Location Capability | | | | | | | |
| A/H | Resources assigned this period: | | RO# | Designator | Leader | # Crew | Phone | | |
| | | | E-20010 | Medic 10 | O. Dominguez | 2 | 713-572-5196 | | |
| | EMS Responders & Capability: | | Medic 10 ALS Ambulance at the FOB | | | | | | |
| | Medical Emergency Channel: | | Command 1 or contact 911 | | | | | | |
| | Approved Helispot: | | | | | | | | |
| D | Resources assigned this period: | | RO# | Designator | Leader | # Crew | Phone | | |
| | | | E-20010 | Medic 10 | O. Dominguez | 2 | 713-572-5196 | | |
| | EMS Responders & Capability: | | Medic 10 ALS Ambulance at the FOB | | | | | | |
| | Medical Emergency Channel | | Command 1 or contact 911 | | | | | | |
| | Approved Helispot: | | | | | | | | |
| E | Resources assigned this period: | | RO# | Designator | Leader | # Crew | Phone | | |
| | | | O-20033 | Roanoke REMS | Mike Roth | 4 | 540-493-2673 | | |
| | EMS Responders & Capability: | | REMS 1 Located mobile Divisions E & F | | | | | | |
| | Medical Emergency Channel: | | Command 1 or contact 911 | | | | | | |
| | Approved Helispot: | | | | | | | | |
| F | Resources assigned this period: | | RO# | Designator | Leader | # Crew | Phone | | |
| | | | O-20033 | Roanoke REMS | Mike Roth | 4 | 540-493-2673 | | |
| | | | E-20010 | Medic 10 | Dominguez | 2 | 713-572-5196 | | |
| | EMS Responders & Capability: | | Located mobile Divisions E & F | | | | | | |
| | Medical Emergency Channel: | | Command 1 or contact 911 | | | | | | |
| Approved Helispot: | | | | | | | | | |

**MEDICAL PLAN (ICS 206 WF)
Controlled Unclassified Information//Basic**

| | | | | | | |
|----------|---------------------------------|-----------------------------------|------------|--------------|---------|--------------|
| G | Resources assigned this period: | RO# | Designator | Leader | # Crew | Phone |
| | | E-20010 | Medic 10 | O. Dominguez | E-20010 | 713-572-5196 |
| | EMS Responders & Capability: | Medic 10 ALS Ambulance at the FOB | | | | |
| | Medical Emergency Channel: | Command 1 or contact 911 | | | | |
| | Approved Helispot: | | | | | |

For Medical Emergencies: See Special Instructions on the ICS 204

Incident Within an Incident (IWI) Instructions:

- 1. Take charge of the scene**
- 2. Contact Division Sup and Quaker Run Communications on Command Channel**
- 3. Follow Incident Medical Report (8-Line).**
- 4. If Unable to Reach Quaker Run Communications on Command, Call 208-901-6177**

| | | | |
|---|----------------------|--|----------------------|
| 7. Prepared By (Medical Unit Leader) | 8. Date/Time | 9. Reviewed By (Safety Officer) | 10. Date/Time |
| Bart Walker MEDL | 11/12/23 1700 | Buddy Kelley, SOFC | 11/12/23 1700 |

Human Resource Message

The mission of the Gold Team is to safely, effectively and efficiently manage the Quaker Run Fire by maintaining a team of skilled and productive personnel. During this incident we will strive to successfully complete our mission and achieve our objectives while creating a positive, work environment for all assigned incident personnel. Consumption of drugs that alter decision making abilities on the job, such as marijuana and alcohol, is prohibited. The Gold Team fully supports every assigned personnel's right to have a safe and enjoyable assignment. ANY form of harassment or discrimination will not be tolerated. All inappropriate behavior will be dealt with promptly. Disciplinary action and reporting back to an individual's home unit will be initiated as necessary.

Please report any incidents of inappropriate behavior to your supervisor or any member of the Gold Team

Debbie Beard, Incident Commander



Finance Message

Quaker Run Finance Email: 2023.quakerrun.finance@firenet.gov

Finance is located at the American Legion Post, 310 Thrift Rd, Madison, VA

COMP/CLAIMS: 352-454-5385 - leave a message

Please send all finance documentation to:



2023.quakerrun.finance@firenet.gov

TIME COLLECTION: Please email your time today!

- ◆ PLEASE INCLUDE RO IN SUBJECT LINE OF EMAIL
- ◆ PLEASE DOCUMENT H-PAY FOR DUTY BEING PERFORMED
- ◆ PLEASE MARK YOUR LAST DAY AS **FINAL** WHEN YOU ARE DEMOBING
- ◆ PLEASE MAKE EVERY EFFORT TO TURN IN ALL CTR's AND SHIFT TICKETS DAILY
- ◆ PLEASE INCLUDE YOUR RESOURCE ORDER # ON ALL DOCUMENTATION SUBMITTED, INCLUDING RECEIPTS
- ◆ IF YOU HAVE QUESTIONS OR NEED ASSISTANCE, PLEASE SEND AN EMAIL AND INCLUDE YOUR PHONE NUMBER; WE WILL CALL YOU
- ◆ PLEASE ADD YOUR PHONE NUMBER AND EMAIL TO A CTR OR SHIFT TICKET TO FACILITATE DEMOB

FINANCE CHECK IN:

- ◆ PLEASE ENSURE THE BELOW DOCUMENTS ARE EMAILED TO FINANCE WITH E# OR O# NOTED:

| Agency Equipment/Crews: | Overhead: | Contract Equipment/Contract Crews: | Cooperator: |
|---|--|---|--|
| <ul style="list-style-type: none">• Manifest• Resource Order• CTR's | <ul style="list-style-type: none">• Resource Order• AD Hire Form (If an AD)• CTR's | <ul style="list-style-type: none">• Agreement/Manifest• Resource Order• CTR / Shift Ticket• Inspection Forms | <ul style="list-style-type: none">• Cooperative Agreement• Resource Order• CTR / Shift Ticket• Inspection Forms |

DEMOBILIZATION CHECK-OUT PROCESS

In person service from Demob and Finance is available at:

The American Legion
310 Thrift Rd, Madison, VA 22727.

Please do not leave the incident until the following steps have been completed!

1. **Note your Demob date in the IAP.** Inform your incident supervisor if that date is wrong, so they can contact demob to update. *Remember: Demob Date is one day after Last Work Day.*
2. **If you need a flight home, at least 3 days before your demob date, you need to provide your info to DMOB:**

Click on this QR code for the Air Travel Info Form, DMOB will then submit a flight request form through Dispatch to get you a flight. DMOB will email your flight itinerary to you after flight is booked.



Link to air travel request: <https://forms.office.com/g/HRJ28deY8T>

AIR TRAVEL INFO

3. **On your Demob Date or end of shift on last day:** Check out with the following units:
 - Supply Unit – Return gear and supplies.
 - Ground Support – Return pool NERV rentals, receive inspections, etc.
 - Communications Unit - Return radios and other communications equipment.
 - Time/Finance – Ensure that all CTRs and/or shift tickets have been submitted and you have received your final, signed OF-288 Time Report or OF-286 invoice.
4. **Demob Checkout Form IMPORTANT:** Once you have completed the above steps, click on the QR code to the right and fill out the **Demob Checkout Form**.

This form is necessary to document your demob and allow us to notify Dispatch on your ETA.

Link to Demob Checkout Form:

<https://forms.office.com/g/1S7gAQLcDi>

Contact the Demob Unit Leader for any questions!

Jeff DeMatteis: (208) 891-6082

2023.quakerrun.demob@firenet.gov



Demob Checkout Form

TRAINING MESSAGE

Use the steps below for trainees checking-in and checking-out.

Check-in – If you are working on a position task book (PTB), please scan the QR code or use the link below to initiate the check-in process with the Incident Training Specialist. Please complete the form in its entirety. Upon completion, at your earliest convenience, please email a photo of your qualification card and position task book cover to al_hoke@firenet.gov

If you need an electronic ICS-225 or ICS-226 or an Evaluation Record email AI and he will send them to you.



[Quaker Run Check-In](#)

Demob – In order to receive credit for your assignment, you must close out with the Incident Training Specialist prior to departure. Please scan the QR code or use the link below to initiate the check-out/Demob process with the Incident Training Specialist. Please complete the form in its entirety.



[Quaker Run Trainee Exit/Demob](#)

Close out requirements include:

- Ensure your trainer(s)/evaluator(s) has/have initialed the completed tasks in your PTB;
- Obtain an Incident Performance Rating (please sign in the appropriate block at the bottom of the form);
- Obtain an Evaluation Record;
 - If evaluator initialed #1 on your Evaluation Record, ensure he/she signs as final evaluator (located on the backside of your PTB cover page);
- Email all documentation (including the above items, when appropriate) to al_hoke@firenet.gov.

If you have questions relating to your training assignment or need any training forms or anything else, please contact AI Hoke, TNSP (678-232-7107 - al_hoke@firenet.gov).

Quaker Run Documentation Process

1. Name files in accordance with the standardized NWCG naming conventions:
{DocType}_{Version}_{Date}_{IncidentNumber}

EXAMPLE: UNIT DAILY LOGS – ICS 214

eDoc_214_HollingsworthJessica_20231110_230102

2. File your docs in the "eDoc Box". Pick 1 of the following methods:

A. Drop them daily into the 'eDoc Box' in the General Channel under 'DOC IN-BOX.

B. Email them to jessica_hollingsworth@firenet.gov

All documentation will be filed electronically in TEAMS. There are no paper copies or paper doc boxes. If you have questions about what to file or how, please reach out!

Questions about the process? Need help? Ask!

Jessica Hollingsworth

Jessica_hollingsworth@firenet.gov or 601-966-0331

Quaker Run Fire Public Information



(540) 613-1809 - 8 a.m. to 8 p.m.



2023.QuakerRun@firenet.gov



<https://www.facebook.com/ForestryVA>

InciWeb Fire Information



<https://inciweb.wildfire.gov/vavas-2023-quaker-run-fire>

We Have Moved!

The Public Information Officer section has moved to the American Legion Post 157 building. This is located 1 mile down the road from the ICP. Please drive slowly, as it is only 25 miles through the town, and there is a school zone on weekdays.

Address: 310 Thrift Road

LOGISTICS INFORMATION

COMMUNICATIONS

Phone number is 208-901-6177, this phone is staffed 24/7

FACILITIES

Operational briefings are at the Forward Operating Base
at Graves Mountain Farm Campground
3822 State Road 670 (Old Blue Ridge Turnpike), Syria VA

ICP is at 1473 North Main Street, Madison VA

Demob, Finance and Public Information are at the American Legion, Post 157
310 Thrift Road, Madison VA
Turn left out of ICP onto Main St and go 1.0 mile south on Main St,
then turn right onto Thrift Road

GROUND SUPPORT and SUPPLY

Located at the Forward Operating Base at
Graves Mountain Farm Campground
3822 State Road 670 (Old Blue Ridge Turnpike), Syria VA

MEDICAL

For **NON-EMERGENCY** medical needs, please contact either
Medical Unit Leader at 352-203-9191 OR 317-730-6653

ORDERING

Send an electronic General Message (213) or a photo (PDF if possible)
of a hard copy 213 to Ordering at 2023.quakerrun.ordering@firenet.gov

Please include Point of Contact w/phone number,
Report To Location/Delivery Point, and Date & Time Needed

ICP Locations

Quaker Run

VA-VAS-230102

Old Fire Station:

IC, OPS, Planning

1473 N Main St, Madison, VA 22727

38.38785, -78.24848

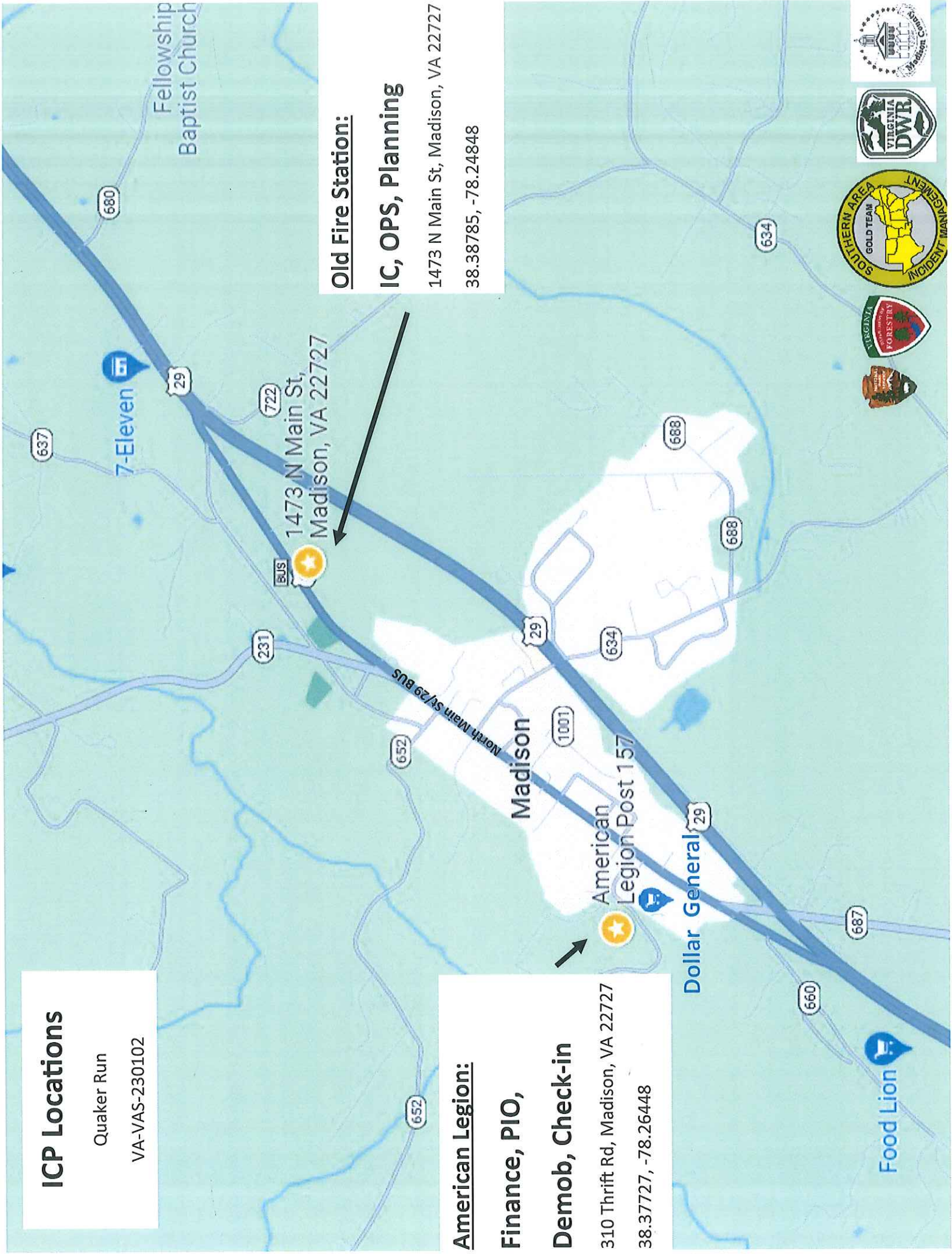
American Legion:

Finance, PIO,

Demob, Check-in

310 Thrift Rd, Madison, VA 22727

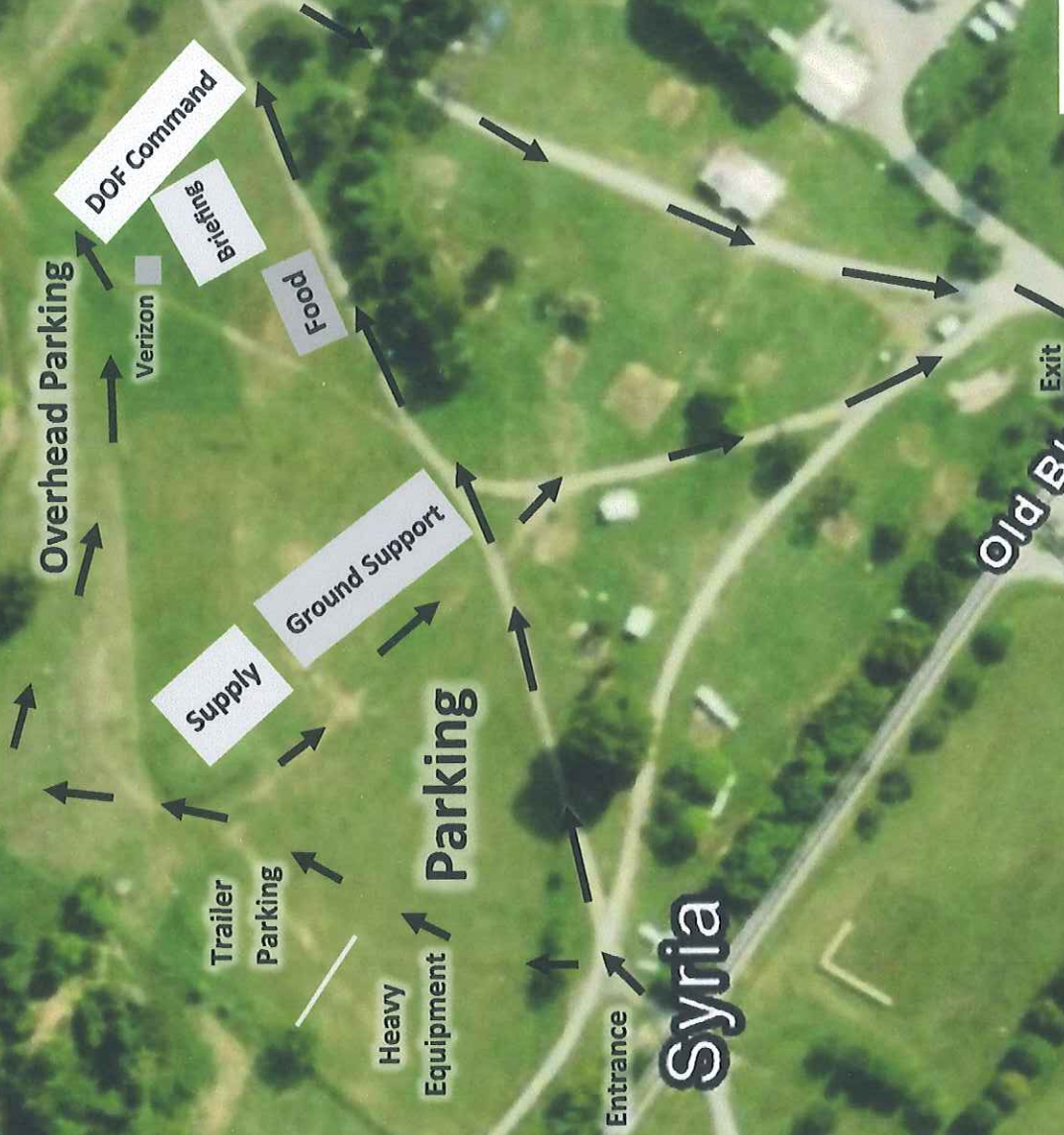
38.37727, -78.26448



Graves Mountain Area

Quaker Run
VA-VAS-230102

Helispot



Old Blue Ridge Tpke

Graves Mountain Farm Campground

3822 Old Blue Ridge Turnpike, Syria, VA 22743

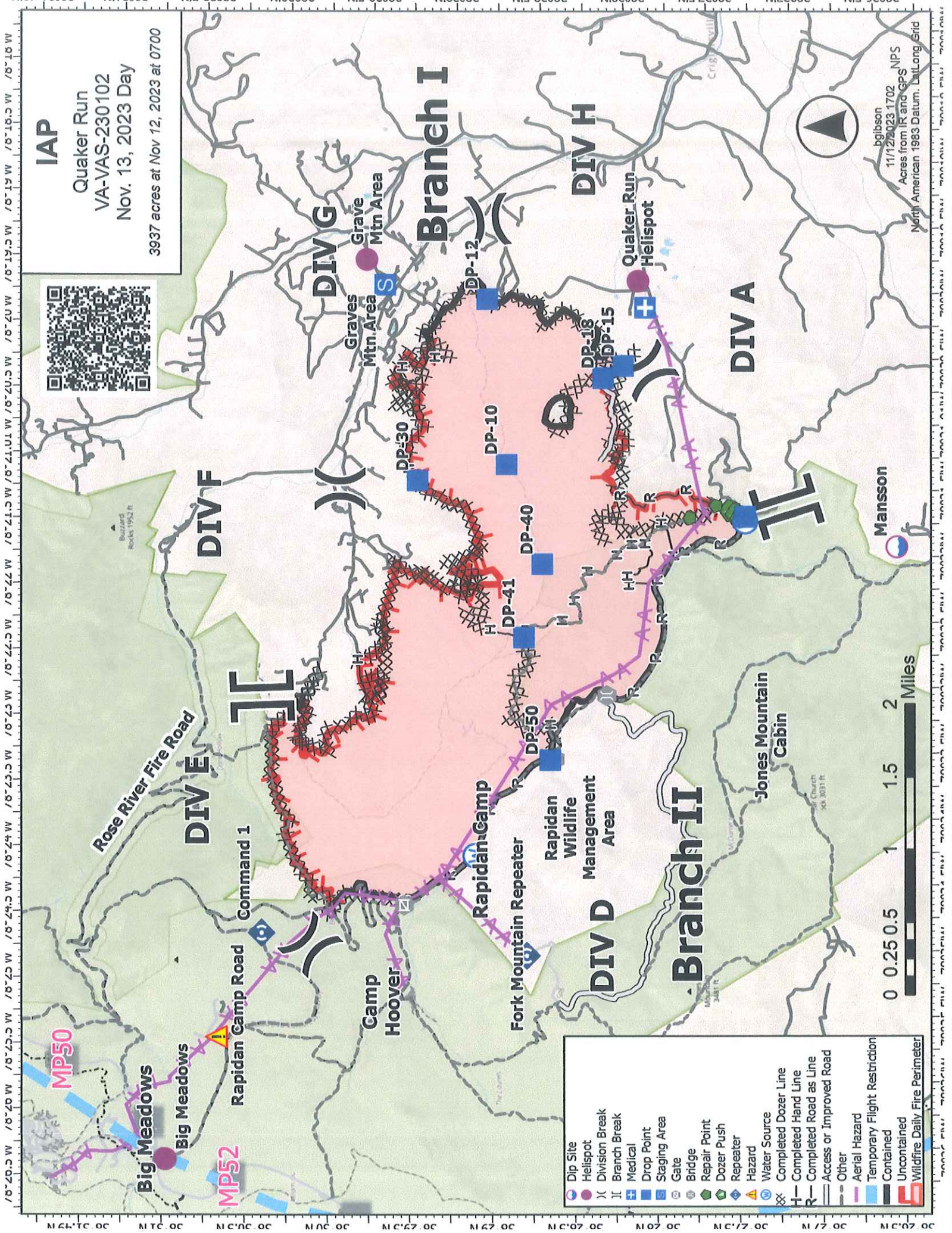
38.49144, -78.33018



IAP

Quaker Run
VA-VAS-230102
Nov. 13, 2023 Day

3937 acres at Nov 12, 2023 at 0700



- Dip Site
- Helispot
- Division Break
- Branch Break
- Medical
- Drop Point
- Staging Area
- Gate
- Bridge
- Repair Point
- Dozer Push
- Repeater
- Hazard
- Water Source
- Completed Dozer Line
- Completed Hand Line
- Completed Road as Line
- Access or Improved Road
- Other
- Aerial Hazard
- Temporary Flight Restriction
- Contained
- Uncontained
- Wildfire Daily Fire Perimeter



bgibson
11/12/2023 1702 NPS
Acres from IR and GPS
North American 1983 Datum, DatLong Grid

Map labels include: Branch I, Branch II, DIV A, DIV B, DIV C, DIV D, DIV E, DIV F, DIV G, DIV H, Rose River Fire Road, Command 1, Big Meadows, Big Meadows, Hoover, Rapidan Camp, Rapidan Repeater, Fork Mountain Repeater, Rapidan Wildlife Management Area, Jones Mountain Cabin, Quaker Run Helispot, Graves Mtn Area, Grave Mtn Area, Buzzard Rocks 1962 ft, Masons Church 3031 ft, Mansson, and various DP (Drop Point) markers (DP-10, DP-12, DP-15, DP-18, DP-30, DP-40, DP-41, DP-50).

MEDICAL PLAN (ICS 206 WF)

Controlled Unclassified Information//Basic

Medical Incident Report

FOR A NON-EMERGENCY INCIDENT, WORK THROUGH CHAIN OF COMMAND TO REPORT AND TRANSPORT INJURED PERSONNEL AS NECESSARY.

FOR A MEDICAL EMERGENCY: IDENTIFY ON-SCENE INCIDENT COMMANDER BY NAME AND POSITION AND ANNOUNCE "MEDICAL EMERGENCY" TO INITIATE RESPONSE FROM IMT COMMUNICATIONS/DISPATCH.

Use the following items to communicate situation to communications/dispatch.

1. CONTACT COMMUNICATIONS / DISPATCH (Verify correct frequency prior to starting report)

Ex: "Communications, Div. Alpha. Stand-by for Emergency Traffic."

2. INCIDENT STATUS: Provide incident summary (including number of patients) and command structure.

Ex: "Communications, I have a Red priority patient, unconscious, struck by a falling tree. Requesting air ambulance to Forest Road 1 at (Lat./Long.) This will be the Trout Meadow Medical, IC is TFLD Jones. EMT Smith is providing medical care."

| | | |
|---|--|--|
| Severity of Emergency / Transport Priority | <input type="checkbox"/> RED / PRIORITY 1 Life or limb threatening injury or illness. Evacuation need is IMMEDIATE <i>Ex: Unconscious, difficulty breathing, bleeding severely, 2° – 3° burns more than 4 palm sizes, heat stroke, disoriented.</i> <input type="checkbox"/> YELLOW / PRIORITY 2 Serious Injury or illness. Evacuation may be DELAYED if necessary. <i>Ex: Significant trauma, unable to walk, 2° – 3° burns not more than 1-3 palm sizes.</i> <input type="checkbox"/> GREEN / PRIORITY 3 Minor Injury or illness. Non-Emergency transport <i>Ex: Sprains, strains, minor heat-related illness.</i> | |
| Nature of Injury or Illness & Mechanism of Injury | | Brief Summary of Injury or Illness <i>(Ex: Unconscious, Struck by Falling Tree)</i> |
| Evacuation Request | | Air Ambulance / Short Haul/Hoist Ground Ambulance / Other |
| Patient Location | | Descriptive Location & Lat. / Long. (WGS84) |
| Incident Name | | Geographic Name + Medical <i>(Ex: Trout Meadow Medical)</i> |
| On-Scene Incident Commander | | Name of on-scene IC of Incident within an Incident <i>(Ex: TFLD Jones)</i> |
| Patient Care | | Name of Care Provider <i>(Ex: EMT Smith)</i> |

3. INITIAL PATIENT ASSESSMENT: Complete this section for each patient as applicable (start with the most severe patient)

Patient Assessment: See IRPG PAGE 106

Treatment:

4. EVACUATION PLAN:

Evacuation Location (if different): (Descriptive Location (drop point, intersection, etc.) or Lat. / Long.) Patient's ETA to Evacuation Location: [Click or tap here to enter text.](#)

Helispot / Extraction Site Size and Hazards:

5. ADDITIONAL RESOURCES / EQUIPMENT NEEDS:

Example: Paramedic/EMT, crews, immobilization devices, AED, oxygen, trauma bag, IV/fluid(s), splints, rope rescue, wheeled litter, HAZMAT, extrication

6. COMMUNICATIONS: Identify State Air/Ground EMS Frequencies and Hospital Contacts as applicable

| Function | Channel Name/Number | Receive (RX) | Tone/NAC * | Transmit (TX) | Tone/NAC * |
|-------------|---------------------|--------------|------------|---------------|------------|
| COMMAND | | | | | |
| AIR-TO-GRND | | | | | |
| TACTICAL | | | | | |

7. CONTINGENCY: Considerations: If primary options fail, what actions can be implemented in conjunction with primary evacuation method? Be thinking ahead.

8. ADDITIONAL INFORMATION: Updates/Changes, etc.

REMEMBER: Confirm ETA's of resources ordered. Act according to your level of training. Be Alert. Keep Calm. Think Clearly. Act Decisively.