





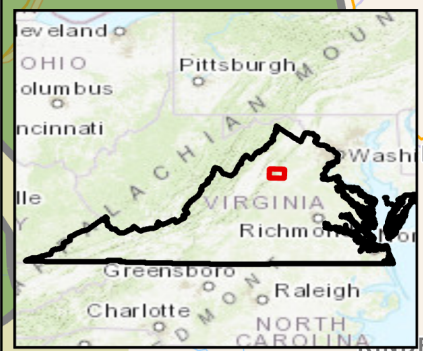
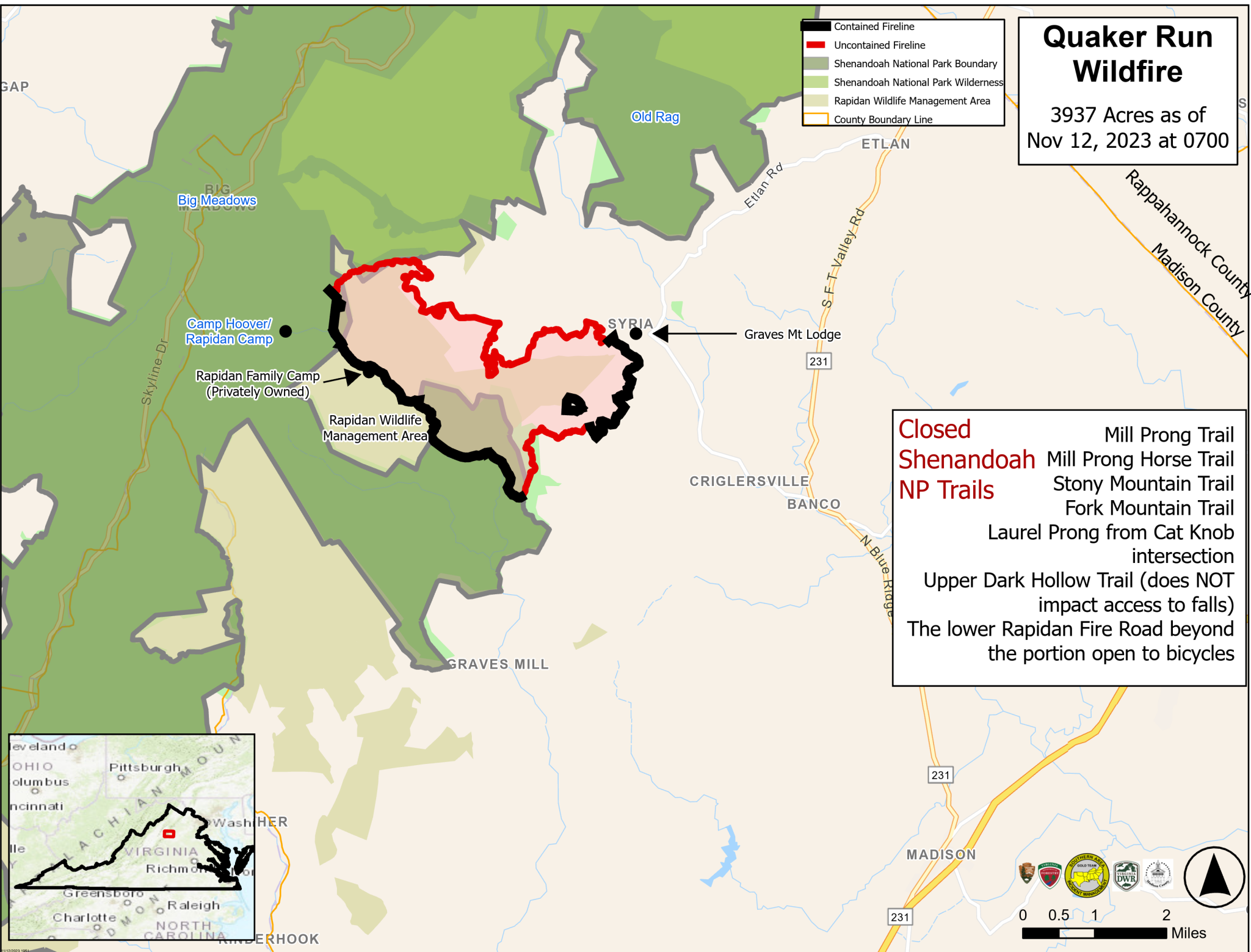


Quaker Run Wildfire

3937 Acres as of
Nov 12, 2023 at 0700

-  Contained Fireline
-  Uncontained Fireline
-  Shenandoah National Park Boundary
-  Shenandoah National Park Wilderness
-  Rapidan Wildlife Management Area
-  County Boundary Line

- Closed Shenandoah NP Trails**
- Mill Prong Trail
 - Mill Prong Horse Trail
 - Stony Mountain Trail
 - Fork Mountain Trail
 - Laurel Prong from Cat Knob intersection
 - Upper Dark Hollow Trail (does NOT impact access to falls)
 - The lower Rapidan Fire Road beyond the portion open to bicycles



This block contains several logos including the Virginia Department of Forestry, the U.S. Forest Service, and the Shenandoah National Park logo. Below the logos is a scale bar showing distances from 0 to 2 miles and a north arrow.