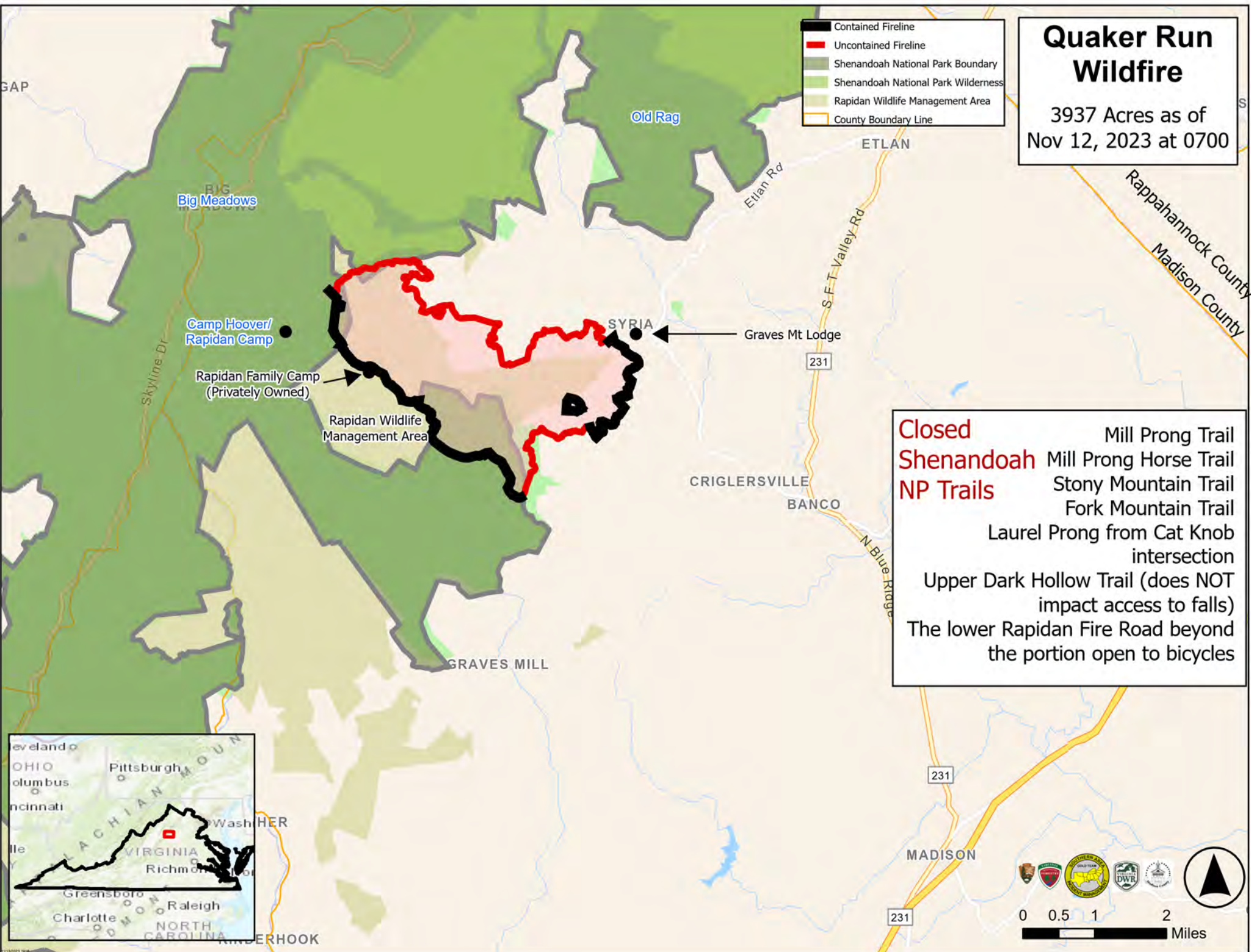


Quaker Run Wildfire

3937 Acres as of
Nov 12, 2023 at 0700

- Contained Fireline
- Uncontained Fireline
- Shenandoah National Park Boundary
- Shenandoah National Park Wilderness
- Rapidan Wildlife Management Area
- County Boundary Line



Closed Shenandoah NP Trails

- Mill Prong Trail
- Mill Prong Horse Trail
- Stony Mountain Trail
- Fork Mountain Trail
- Laurel Prong from Cat Knob intersection
- Upper Dark Hollow Trail (does NOT impact access to falls)
- The lower Rapidan Fire Road beyond the portion open to bicycles

