





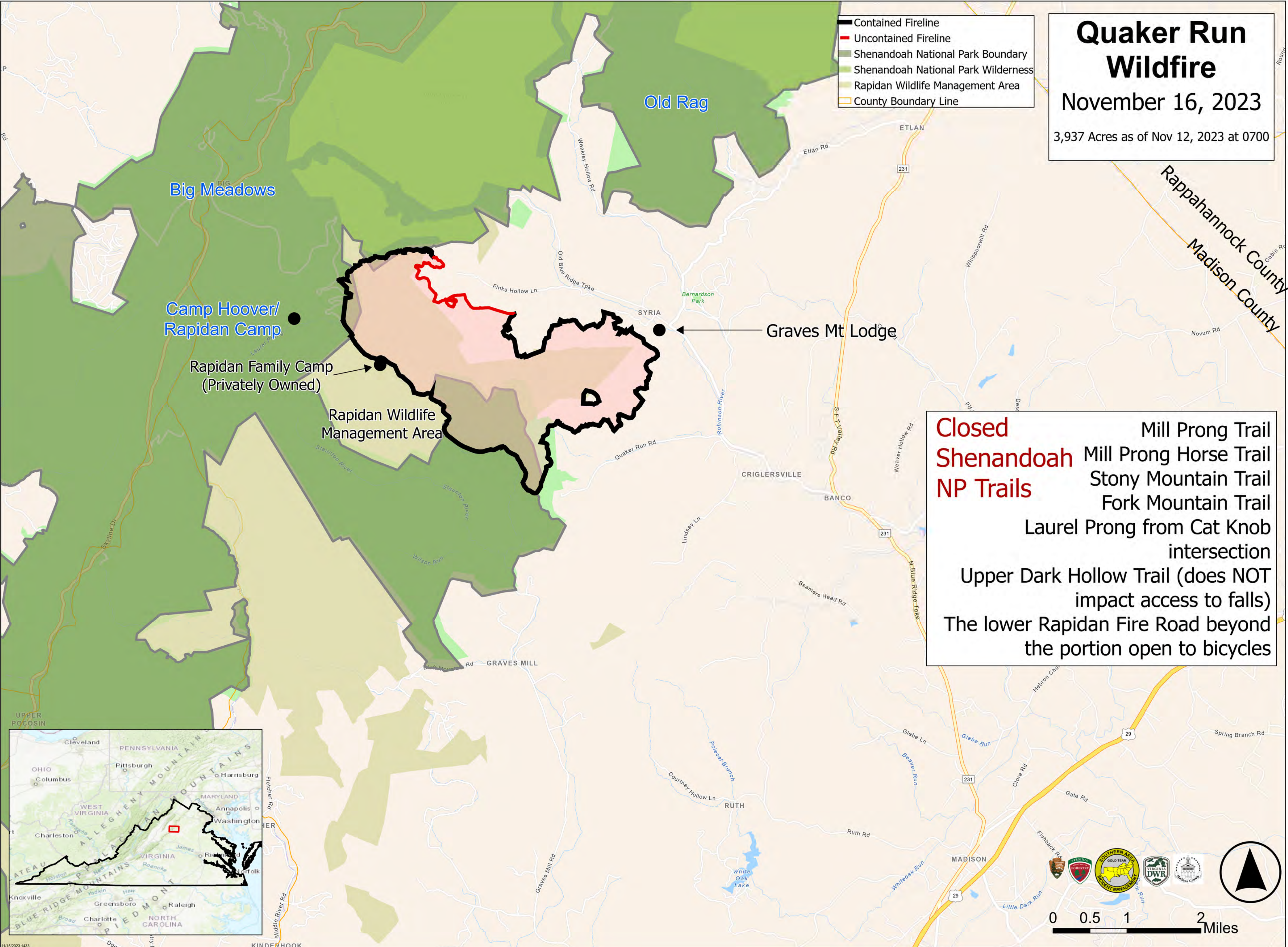


Quaker Run Wildfire

November 16, 2023

3,937 Acres as of Nov 12, 2023 at 0700



-  Contained Fireline
-  Uncontained Fireline
-  Shenandoah National Park Boundary
-  Shenandoah National Park Wilderness
-  Rapidan Wildlife Management Area
-  County Boundary Line



Closed Shenandoah NP Trails

- Mill Prong Trail
- Mill Prong Horse Trail
- Stony Mountain Trail
- Fork Mountain Trail
- Laurel Prong from Cat Knob intersection
- Upper Dark Hollow Trail (does NOT impact access to falls)
- The lower Rapidan Fire Road beyond the portion open to bicycles



0 0.5 1 2 Miles