

Quaker Run Wildfire

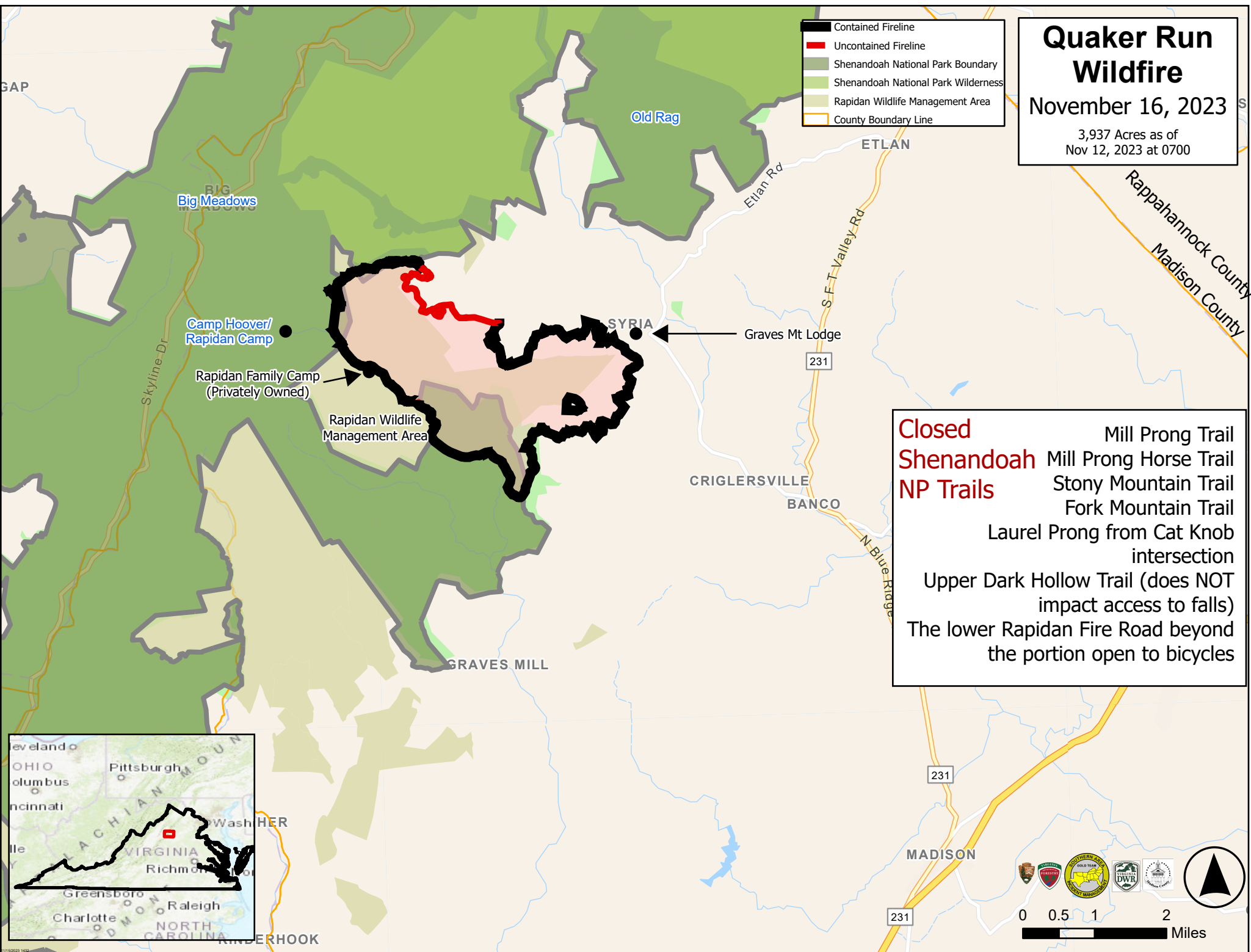
November 16, 2023

3,937 Acres as of
Nov 12, 2023 at 0700

- Contained Fireline
- Uncontained Fireline
- Shenandoah National Park Boundary
- Shenandoah National Park Wilderness
- Rapidan Wildlife Management Area
- County Boundary Line

Closed Shenandoah NP Trails

- Mill Prong Trail
- Mill Prong Horse Trail
- Stony Mountain Trail
- Fork Mountain Trail
- Laurel Prong from Cat Knob intersection
- Upper Dark Hollow Trail (does NOT impact access to falls)
- The lower Rapidan Fire Road beyond the portion open to bicycles



Logos for Shenandoah National Park, National Park Service, and other organizations. A scale bar shows distances from 0 to 2 miles. A north arrow is also present.