



Incident Link Tree

Quaker Run Fire

VA-VAS-230102
PNQQ13 (1522)




IAP

Friday, November 17-21, 2023
0630-2030 hrs.



ORGANIZATION ASSIGNMENT LIST (ICS 203)

1. Incident Name:		2. Operational Period: FRIDAY-TUESDAY	
QUAKER RUN		Date/Time From: 11/17/2023 0630	Date/Time To: 11/21/2023 2030
		FRI	TUE
3. Incident Commander(s) and Command Staff:		UNIT	
		RADIO OPERATOR	
IC/UC	PAUL CHURCHILL	MEDICAL UNIT	
DEPUTY	DAVID HARMON	SECURITY UNIT	LUKE WASSINK
SAFETY OFFICER	TIMOTHY BENEDICT	SEAN REIER	
INFORMATION OFFICER		7. Operations Section:	
LIAISON OFFICER		PLANNING OPS SECTION CHIEF	
4. Agency/Organization Representative(s):		FIELD OPS SECTION CHIEF	
Agency/Organization	Name	STRUCTURE PROTECTION SPECIALIST	
NPS			
VDOF		DIVISION/GROUP	A/H/G/F
MADISON COUNTY EMERGENCY MANAGEMENT		DIVISION/GROUP	D
MADISON COUNTY SHERIFF OFFICE	SHERIFF ERIK WEAVER	DIVISION/GROUP	E
READ	ALAN WILLIAMS JOHN PEREZ	7b. Air Operations Branch:	
5. Planning Section:		AIR OPS BRANCH DIRECTOR	
CHIEF		AIR SUPPORT SUPERVISOR	
DEPUTY		AIR ATTACK SUPERVISOR	
RESOURCES UNIT		8. Finance/Administration Section:	
STATUS CHECK-IN		CHIEF	
SITUATION UNIT		DEPUTY	
DEMOBILIZATION UNIT	JEFF DEMATTEIS	TIME UNIT	LISA ECKERT (T)
FIRE BEHAVIOR ANALYST		COMPENSATION UNIT	
TRAINING SPECIALIST		COST UNIT	
GIS SPECIALIST		EQ. TIME RECORDER	DANA PRICE(T)
TECHNOLOGY SUPPORT SPECIALIST			
DOCUMENTATION UNIT			
INCIDENT METEOROLOGIST			
AIR RESOURCE ADVISOR			
6. Logistics Section:			
CHIEF			
DEPUTY			
FACILITIES UNIT			
SUPPLY UNIT			
ORDERING MANAGER			
RECEIVING/DISTRIBUTION MANAGER			
GROUND SUPPORT UNIT			
COMMUNICATIONS			
9. Prepared By:	Name: KELLY GOOD	Position/Title: RESL(T)	Signature:
ICS 203	IAP Page	Date/Time: 11/15/2023 2000	



INCIDENT Weather Forecast



FORECAST NO: 8

NAME OF FIRE: Quaker Run

PREDICTION FOR: 5-Day Forecast

UNIT: VA-VAS

SHIFT DATES: November 17-21, 2023

SIGNED: Cody Ledbetter

FORECAST ISSUED: 1800 hrs, November 15th, 2023

Incident Meteorologist Trainee

WEATHER DISCUSSION: A cold front will move through the area Friday night into Saturday, bringing the chance for some rain across the fire. Dry air moves in behind the front Saturday afternoon through Monday. A stronger storm system may arrive on Tuesday into Wednesday, which could bring a better chance for wetting rains.

WEATHER FORECAST:

Friday Nov 17: Mostly cloudy and warm with highs in the mid 60s. Winds south at 7 to 12 mph, occasionally gusting to 20 mph on the ridges. Minimum humidity only drops to around 70%. Showers possible late in the evening into Friday night.

Saturday Nov 18: A cold front will push through on Saturday, bringing a 40% chance for showers early Saturday. Winds become NW at 16 to 20 mph, occasionally gusting to near 30 mph. Humidities drop in the afternoon to around 50 to 60 percent. High temperatures in the mid 50s.

Sunday Nov 19: Poor recovery of humidity Sunday morning, only getting to around 65%. Sunny skies with west winds at 5 to 10 mph, occasionally gusting to 15 mph along the ridges. Humidity drops to 30 to 40 percent during the afternoon. High temperatures in the low 50s.

Monday Nov 20: Sunny and dry, with east winds at 5-10 mph. Slightly higher humidity during the afternoon to around 40 to 50%. High temperatures in the upper 40s to low 50s.

Tuesday Nov 21: Mostly cloudy with a 40% chance of wetting rain late in the afternoon. Wind increases out of the southeast at 10 to 15 mph, gusting up to 20 mph on the ridges. Humidity will be in the 70 to 80 percent range. High temperatures in the upper 40s to low 50s.

EXTRA INFORMATION:

*****Disclaimer*****

Weather forecasts are constantly adapting to the latest available model data, especially the further out in time the forecast is. While this forecast is what we expect at this time, it is encouraged to seek out SPOT forecasts from the local National Weather Service Forecast Office in Sterling, VA for up to date daily forecasts. Those can be submitted via [weather.gov/SPOT](https://www.weather.gov/SPOT). The Sterling, VA NWS office can be reached at 571-888-3501, and just ask for the short term desk.

FIRE BEHAVIOR FORECAST

FORECAST NUMBER: 9	TYPE OF FIRE: Wildland
FIRE NAME: Quaker Run	OPERATIONAL PERIOD: Day Shift
DATE ISSUED: Wed Nov 15, 2023 Time Issued: 1700	SHIFT DATE: Friday Nov 17 thru Tues Nov 21
UNIT: Virginia DOF and Shenandoah NP	SIGNED: <i>Kelly Cagle</i> FBAN

WEATHER SUMMARY:

Local Thresholds – Watch Outs	Forecast for period
7 Days or > Since Rainfall Combo of RH<30 and Winds >15	Thresholds not expected to occur within next 5 days

FIRE BEHAVIOR:

Friday Nov 17: Heavy clouds and high RH's will prevent significant fire behavior. Reburn is not likely to be a problem under those weather conditions. Minor smoke or smoldering possible. Chance of a shower overnight on Friday night.

Saturday Nov 18: Partial sunshine returns. Temps are cool and RH's will be in the 50's. Fine fuels will not be overly receptive, but **KEEP IN MIND** that if no rain falls Friday night or during the day on Sat, fuels would most likely support fire spread, especially on south and west slopes. The winds will be breezy and will encourage fire spread.

Sunday Nov 19: Full sunshine expected with RH's in the 30's. Fine fuels will support fire spread under these conditions, especially with expected poor overnight recovery. If no precip Fri/Sat – reburn potential will be high. Reburn rates of spread of 1 or 2 chains per hour would be possible. Flame lengths no more than knee high. ROS outside the unit on a south facing slope might be as high as 10 chains per hour. PIG would be around 40%.

Monday Nov 20: Full sunshine with RH's in the 40's. Fine fuels will support fire spread under these conditions. Reburn rates of spread of 1 or 2 chains per hour would be possible. Low flame lengths expected. PIG less than 40% . Rates of spread outside the perimeter on a south slope would be 5 to 8 chains per hour. **Winds will be EAST today!**

Tuesday Nov 21-Heavy clouds with high humidity expected. If these conditions materialize, it will not be conditions that will support active fire spread. Reburn unlikely or minimal. Isolated smoke or smolder possible.

Specific Areas of Concern:

All areas of the fire – **Reburn potential remains as long as any heat remains inside the perimeter. Leaf drop is continuing and is providing a new fuel bed.** IR continues to show scattered heat and any place where new fallen leaves exist near heat sources could potentially cause reburn. Open, spreading flame would be possible in that situation at low flame lengths and rates of spread.

Smoldering and creeping possible almost any day that fuels are not wet. Ground/duff fire possible. Isolated smokes expected to remain visible across the fire area for at least a few days.

An escape is likely to spread easily on a south facing slope and could display surprising fire behavior.

Most important – monitor and address leaf accumulation in firelines. That is the most likely way for this fire to escape containment lines.

Air Operations:

Aviation conditions vary on a day to day basis. If aviation resources are to be used, it would be a good idea to consult with the NWS office to get a more informed and current aviation forecast.

Fire Behavior Safety Message:

Remember that leaf litter is a 1 hour fuel and can dry very quickly – especially in sunshine. Fire spread is usually possible within about 2-3 days or so of a rain event. **Wind is the most important driver of fire spread in leaf litter.** Monitor for any forecasted wind speed increase after a period of 2 to 3 days of dry weather.

Division/Group Assignment List (ICS 204 WF)
Controlled Unclassified Information//Basic

1. Incident Name:		3.				
QUAKER RUN		Branch:		Division/Group A/H/G/F		
2. Operational Period: FRIDAY-TUESDAY						
Date/Time From: 11/17/2023 0630	FRI	Date/Time To: 11/21/2023 2030	TUE			
4. Operations Personnel						
5. Resources Assigned this Period						
Strike Team / Task Force / Resource Designator	LWD	Leader	Number Persons	Drop Off PT./Time	Pick Up PT./Time	
UNSTAFFED						
6. Control Operations/Work Assignments:						
Unstaffed. No federal resources monitored by VDOF.						
7. Special Instructions:						
Not staffed by federal resources, monitored by state. Point of contact: Mike Downey (434) 529-7546.						
8. Division/Group Communication Summary						
Function	Channel	RX Frequency N/W	RX Tone/NAC	TX Frequency N/W	TX Tone/NAC	Mode
COMMAND						
TACTICAL						
LOGISTICS						
AIR TO GROUND						
9. Prepared By (Resource Unit Leader)		Approved By (Planning Section Chief)		Date	Time	
KELLY GOOD RESL(T)		CAROL O'BRYAN PSCC		11/15/2023	2000	

Division/Group Assignment List (ICS 204 WF)
Controlled Unclassified Information//Basic

1. Incident Name:		3.				
QUAKER RUN		Branch:		Division/Group		
2. Operational Period: FRIDAY-TUESDAY		D/E				
Date/Time From: 11/17/2023 0630 FRI	Date/Time To: 11/21/2023 2030 TUE					
4. Operations Personnel						
FIELD OPS		DIVISION/GROUP SUPERVISOR		MATT BOSS (T)		
AIR ATTACK SUPERVISOR		OPERATIONS CHIEF				
BRANCH DIRECTOR						
5. Resources Assigned this Period						
Strike Team / Task Force / Resource Designator	LWD	Leader	Number Persons	Drop Off PT./Time	Pick Up PT./Time	
C-20001 CR21 DIAMOND FIRE NCC	11/23	JOHNATHAN ALVAREZ	20	/0600	/2000	
ENG6 HURRICANE VALLEY BRUSH 471	11/25	TYLER HIRSHFELD	2	/0600	/2000	
E-20009 ENG6 MADISON	11/27	ROBERT KOHLER	4	/0600	/2000	
SOF2	11/22	TIM BENEDICT	1	/0600	/2000	
6. Control Operations/Work Assignments:						
Task: Patrol and monitor fire line for any heat and mop up.						
Purpose: Keep fire off of the Shenandoah NP.						
End State: To prevent fire from getting onto the Shenandoah NP and damaging any resources or historical sites.						
7. Special Instructions:						
Remove all unnecessary flagging and trash						
IWI Instructions						
1.Take charge of scene						
2.Contact DIV Sup						
3.Follow Incident Medical Report (8 line)						
4.Contact National Park Dispatch (call sign 740) on command channel 6 announce "EMERGENCY TRAFFIC" with your location.						
8. Division/Group Communication Summary						
Function	Channel	RX Frequency N/W	RX Tone/NAC	TX Frequency N/W	TX Tone/NAC	Mode
TACTICAL	1 (NPS1)	167.15	127.3	167.15	127.3	A
COMMAND	6 (FORK MTN)	172.6750	4F9	166.3000	4F9	D
AIR TO GROUND	14 (A/G 06)	166.8000		166.8000		A
AIR TO GROUND	15 (A/G 15)	167.5250		167.5250		A
AIR GUARD	16 (AIRGUARD)	168.6250		168.6250	110.9	A
9. Prepared By (Resource Unit Leader)		Approved By (Planning Section Chief)		Date	Time	
KELLY GOOD RESL(T)		CAROL O'BRYAN PSCC		11/15/2023	2000	

HEALTH AND SAFETY MESSAGE

INCIDENT: Quaker Run

Operational Period: 0600 -2000, 11/17-21/23

Major Hazards:

- **HAZARD TREES, SNAGS, BLOWDOWN...** recent blowdown, live trees or snags that can fall.
- **DRIVING: Slow down; Deer crossing, wet slick roads, night time driving, cobble or rock on road, and traffic. Apply defensive driving. UTVs-Do not exceed their capability. Drive them carefully.**
- **WEATHER.... Cold and Wind. Sudden changes. Heads up!!!**
- **COMPLACENCY: Focus and pay attention to the warning signs and details you may see that will tip you off of hazards or unnecessary risks.**
- **RESOURCE ACCOUNTABILITY: All resources are accounted for.**
- **WILDLIFE: Beware of darting deer.**
- **UNEXPECTED EVENTS: Be aware of changes and what you are going to do about it.**

Snag and Blowdown Safety

- Watchout for recently fallen trees on the roads. Especially in night time conditions.
- Avoid stepping on wet down trees/blowdown.
- Due to recent insect epidemics (i.e., tussock moth) trees could be compromised and weakened.
- Access roads could be blocked by windfall/blowdown.
- Sustained high winds could blowdown existing standing dead.
- Provide timely feedback to others regarding hazard trees.
- Watch out for leaning dead trees and widow makers.
- Know current and expected winds
- Watch out for trees leaning hung-up
- Watch out for shallow root systems

Do not be caught with these Common Driving Mistakes

1. Failing to pay attention – “zoning out”
2. Driving while drowsy.
3. Not paying attention to shaded curves.
4. Becoming distracted inside car (cell phone, radio, passengers)
5. Failing to adjust to adverse weather conditions.
6. Driving aggressively (tailgating, running red lights, and stop signs, etc.)
7. Making assumptions about other driver’s intentions.
8. Speeding.
9. Changing lanes without checking blinds spots.
10. Driving while upset.
11. Cruise control on during wet or slick road conditions.
12. Ignoring essential auto maintenance (brake lights, bald tires, etc.)
13. Not slowing down in dark conditions or blind corners.

Cold Weather → Dress properly; wear at least three layers of loose-fitting clothing, insulated gloves and boots, and cover your head.
• Stay dry and pack extra clothes; moisture can increase heat loss from the body.
• Take frequent breaks in warm, dry areas.

Look up, look down, Look all around. Continually check where you are and what is around you. Do a safety pause and check your surroundings.

Hunting season will start *this Saturday 11/18/23.*

Safety Officer: Tim Benedict

INCIDENT RADIO COMMUNICATIONS PLAN (ICS 205)
 Controlled Unclassified Information/Basic

1. Incident Name:		2. Date/Time Prepared:		3. Operational Period:		DAY & NIGHT		Date/Time To:		
Quaker Run Fire		Date: 11/05/23 Time: 1600		Date/Time From: 11/17/23 0630				11/21/23 2030		
4. Basic Radio Channel Use:										
Zone Group	Ch #	Function	Channel Name	Assignment	RX Freq	RX Tone/NAC	TX Freq	TX Tone/NAC	Mode (A,D, or M)	Remarks
5	1	TACTICAL	NPS1	DIV D/E	167.15	127.3	167.15	127.3	A	DIV D/E TACTICAL
5	2									
5	3									
5	4									
5	5									
5	6	COMMAND	FORK MTN	DIV D/E	172.6750	4F9	166.3000	4F9	D	SHENANDOAH DISPATCH 740
5	7									
5	8									
5	9									
5	10									
5	11									
5	12									
5	13									
5	14	AIR TO GROUND	A/G 06	PRIMARY A/G	166.8000	NONE	166.8000	NONE	A	PRI A/G
5	15	AIR TO GROUND	A/G 15	SECONDARY A/G	167.5250	NONE	167.5250	NONE	A	SEC A/G
5	16	AIRGUARD	AIRGUARD	EMERGENCY USE	168.6250	NONE	168.6250	110.9	A	EMERGENCY HALLING OF AIRCRAFT
5. Special Instructions:										
6. Prepared By (Communications Unit Leader)		Name:		PAUL NOA, SA-IMT GOLD			Signature:		<i>Paul J. Noa</i>	
ICS 205				IAP Page			Date/Time:		11/15/23 / 1600	

MEDICAL PLAN (ICS 206 WF)
Controlled Unclassified Information//Basic

1. Incident Project Name				2. Operational Period					
Quaker Run Fire				Date/Time		11/17/23 to 11/22/23 0600-2000			
3. Ambulance Services									
Name		Complete Address		Phone & EMS Frequency		Advanced Life Support (ALS) Yes No			
Madison County EMS		1449 North Main Street Madison, VA 22727		540-948-5161		<input checked="" type="checkbox"/> Yes <input type="checkbox"/> No			
Page EMS		103 S Court St, Luray VA, 22835		540-743-4142		<input type="checkbox"/> Yes <input checked="" type="checkbox"/> No			
4. Air Ambulance Services									
Name		Phone		Type of Aircraft & Capability					
UVA Pegasus Air (UVA)		800-552-1826		EC135 ALS critical care- Charlottesville					
PHI		800-258-8181		ALS Critical Care					
5. Hospitals									
Name Complete Address		GPS Datum – WGS 84 Coordinate Standard Degrees Decimal Minutes		Travel Time Air Gnd.		Helipad Yes No		Level of Care Facility	
UVA Culpeper 501 Sunset Ln, Culpeper, VA 22701		Lat: 38°27'16.43"N Long: 78° 0'51.64"W		10 min 30 min		<input checked="" type="checkbox"/> Yes <input type="checkbox"/> No		24 hr. ED	
UVA Charlottesville 1215 Lee Street, Charlottesville, Va		Lat: 38° 1'51.38"N Long: 78°29'50.21"W		15 min 60 min		<input checked="" type="checkbox"/> Yes <input type="checkbox"/> No		Level 1 Trauma	
VCU burn center 1213 E Clay St, Richmond, VA 23219		Lat: 37°32'25.85"N Long: 77°25'55.10"W		45 min 120 min		<input checked="" type="checkbox"/> Yes <input type="checkbox"/> No		Level 1 TC and Burn Center	
Orange Family Practice 2503 s Seminole Trail, Madison, VA		Lat: 38°21'2.41"N Long: 78°16'51.15"W		NA 10 min		<input type="checkbox"/> Yes <input checked="" type="checkbox"/> No		Family practice- "urgent care" walk in	
Page Memorial 200 Memorial Dr. Luray, VA 22835		Lat: 38°39'46.83"N Long: 78°28'2.85"W		15 min 45 min		<input checked="" type="checkbox"/> Yes <input type="checkbox"/> No		24 hr. ED	
6. Division Branch Group			Area Location Capability						
A/H/G/F			Resources assigned this period:		RO#	Designator	Leader	# Crew	Phone
			EMS Responders & Capability:						
			Medical Emergency Channel:		Contact 911				
			Approved Helispot						
D/E			Resources assigned this period:		RO#	Designator	Leader	# Crew	Phone
			EMS Responders & Capability:						
			Medical Emergency Channel		NPS Command Channel 1				
			Approved Helispot:						

For Medical Emergencies

Incident Within an Incident (IWI) Instructions:

1. Take charge of the scene
2. Contact the Division Sup
3. Follow Incident Medical Report (8-Line)
4. Contact NPS Command Channel 1
Call Sign "740"
5. Announce Emergency Traffic with
Location

7. Prepared By (Medical Unit Leader)	8. Date/Time	9. Reviewed By (Safety Officer)	10. Date/Time
Bart Walker MEDL	11/15/23 1500	Buddy Kelley, SOFC	11/15/23 1500

Quaker Run Fire Public Information



(540) 999-3500 extension - 8 a.m. to 4:30 p.m.



Claire_Comer@nps.gov



<https://www.facebook.com/shenandoahnps>

InciWeb Fire Information



<https://inciweb.wildfire.gov/vavas-2023-quaker-run-fire>

This information will be valid until
all fire personnel depart.

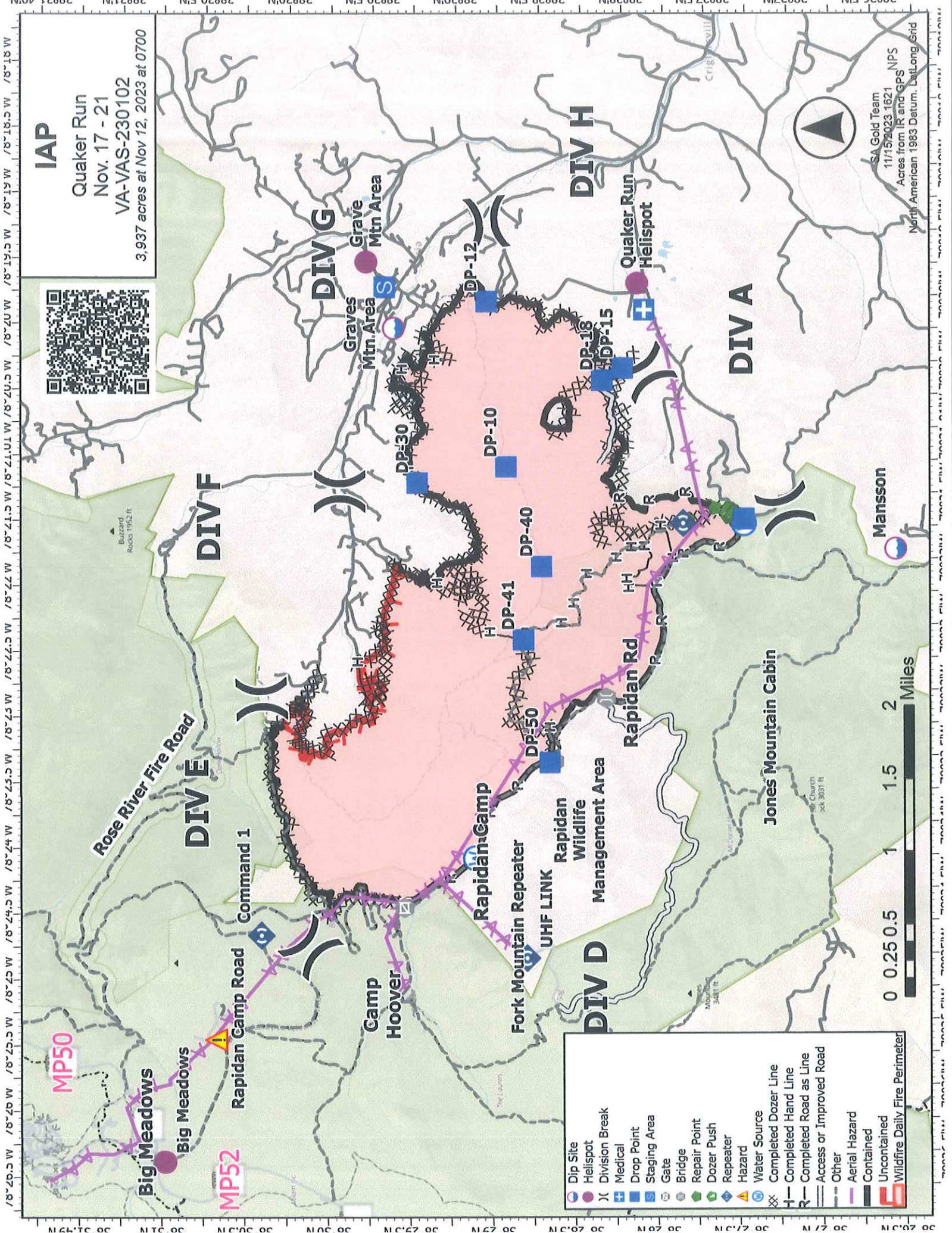
IAP

Quaker Run

Nov. 17 - 21

VA-VAS-230102

3,937 acres at Nov 12, 2023 at 0700



Mansson



SA Gold Team
11/15/2023 1621
Acres from IR and GPS
North American 1983 Datum, Lat/Long Grid

- Dip Site
- Helispot
- Division Break
- Drop Point
- Staging Area
- Gate
- Bridge
- Repair Point
- Dozer Push
- Repeater
- Hazard
- Water Source
- Completed Dozer Line
- Completed Hand Line
- Completed Road as Line
- Access or Improved Road
- Other
- Aerial Hazard
- Contained
- Uncontained
- Wildfire Daily Fire Perimeter

MEDICAL PLAN (ICS 206 WF)

Controlled Unclassified Information//Basic

Medical Incident Report

FOR A NON-EMERGENCY INCIDENT, WORK THROUGH CHAIN OF COMMAND TO REPORT AND TRANSPORT INJURED PERSONNEL AS NECESSARY.

FOR A MEDICAL EMERGENCY: IDENTIFY ON-SCENE INCIDENT COMMANDER BY NAME AND POSITION AND ANNOUNCE "MEDICAL EMERGENCY" TO INITIATE RESPONSE FROM IMT COMMUNICATIONS/DISPATCH.

Use the following items to communicate situation to communications/dispatch.

1. CONTACT COMMUNICATIONS / DISPATCH (Verify correct frequency prior to starting report)

Ex: "Communications, Div. Alpha. Stand-by for Emergency Traffic."

2. INCIDENT STATUS: Provide incident summary (including number of patients) and command structure.

Ex: "Communications, I have a Red priority patient, unconscious, struck by a falling tree. Requesting air ambulance to Forest Road 1 at (Lat./Long.) This will be the Trout Meadow Medical, IC is TFLD Jones. EMT Smith is providing medical care."

Severity of Emergency / Transport Priority	<input type="checkbox"/> RED / PRIORITY 1 Life or limb threatening injury or illness. Evacuation need is IMMEDIATE <i>Ex: Unconscious, difficulty breathing, bleeding severely, 2° – 3° burns more than 4 palm sizes, heat stroke, disoriented.</i> <input type="checkbox"/> YELLOW / PRIORITY 2 Serious Injury or illness. Evacuation may be DELAYED if necessary. <i>Ex: Significant trauma, unable to walk, 2° – 3° burns not more than 1-3 palm sizes.</i> <input type="checkbox"/> GREEN / PRIORITY 3 Minor Injury or illness. Non-Emergency transport <i>Ex: Sprains, strains, minor heat-related illness.</i>	
Nature of Injury or Illness & Mechanism of Injury		<i>Brief Summary of Injury or Illness (Ex: Unconscious, Struck by Falling Tree)</i>
Evacuation Request		<i>Air Ambulance / Short Haul/Hoist Ground Ambulance / Other</i>
Patient Location		<i>Descriptive Location & Lat. / Long. (WGS84)</i>
Incident Name		<i>Geographic Name + Medical (Ex: Trout Meadow Medical)</i>
On-Scene Incident Commander		<i>Name of on-scene IC of Incident within an Incident (Ex: TFLD Jones)</i>
Patient Care		<i>Name of Care Provider (Ex: EMT Smith)</i>

3. INITIAL PATIENT ASSESSMENT: Complete this section for each patient as applicable (start with the most severe patient)

Patient Assessment: See IRPG PAGE 106

Treatment:

4. EVACUATION PLAN:

Evacuation Location (if different): (Descriptive Location (drop point, intersection, etc.) or Lat. / Long.) Patient's ETA to Evacuation Location: Click or tap here to enter text.

Helispot / Extraction Site Size and Hazards:

5. ADDITIONAL RESOURCES / EQUIPMENT NEEDS:

Example: Paramedic/EMT, crews, immobilization devices, AED, oxygen, trauma bag, IV/fluid(s), splints, rope rescue, wheeled litter, HAZMAT, extrication

6. COMMUNICATIONS: Identify State Air/Ground EMS Frequencies and Hospital Contacts as applicable

Function	Channel Name/Number	Receive (RX)	Tone/NAC *	Transmit (TX)	Tone/NAC *
COMMAND					
AIR-TO-GRND					
TACTICAL					

7. CONTINGENCY: Considerations: If primary options fail, what actions can be implemented in conjunction with primary evacuation method? Be thinking ahead..

8. ADDITIONAL INFORMATION: Updates/Changes, etc.

REMEMBER: Confirm ETA's of resources ordered. Act according to your level of training. Be Alert. Keep Calm. Think Clearly. Act Decisively.