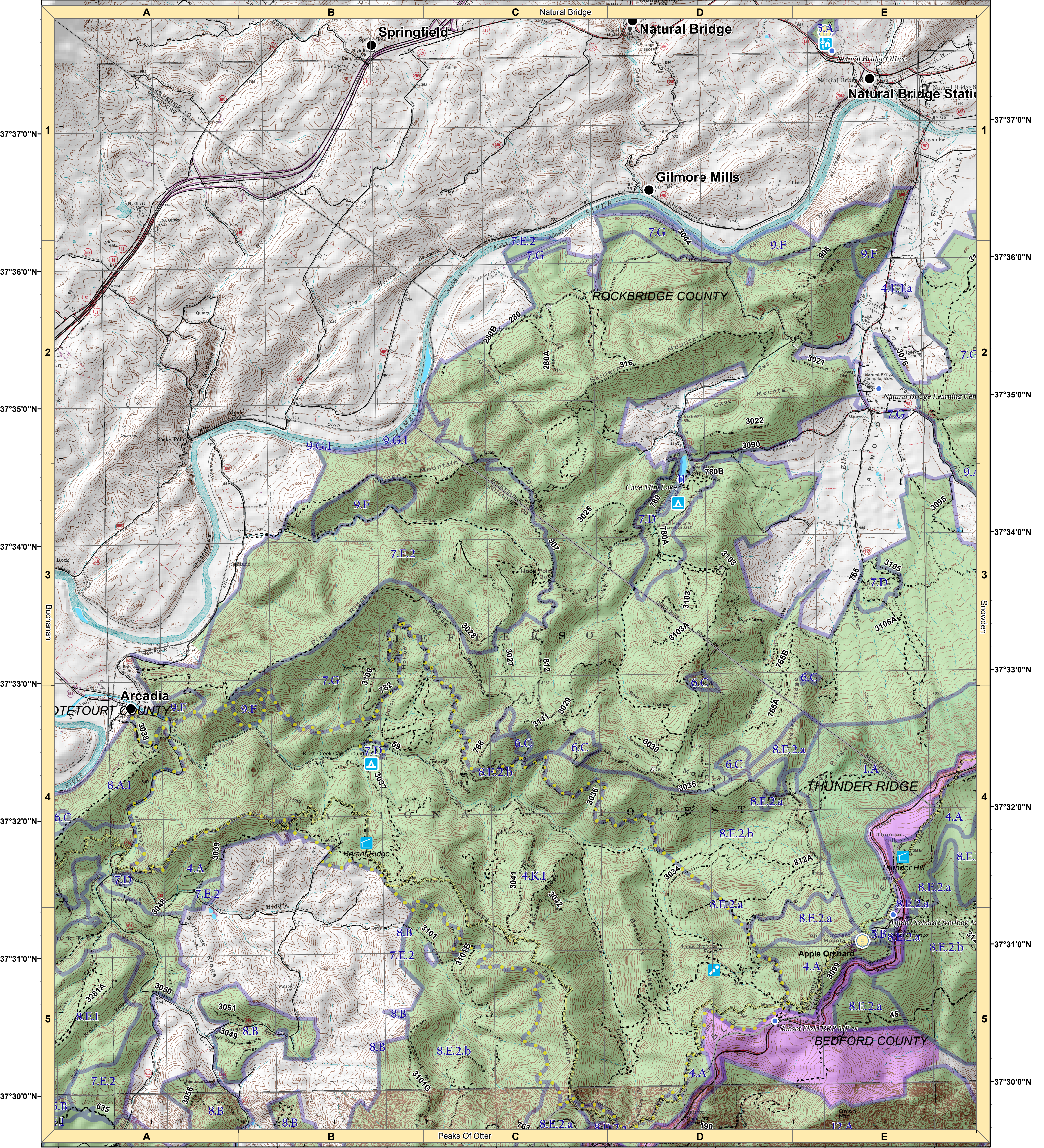
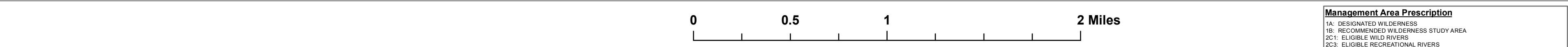


79°38'0"W 79°37'0"W 79°36'0"W 79°35'0"W 79°34'0"W 79°33'0"W 79°32'0"W 79°31'0"W 79°30'0"W

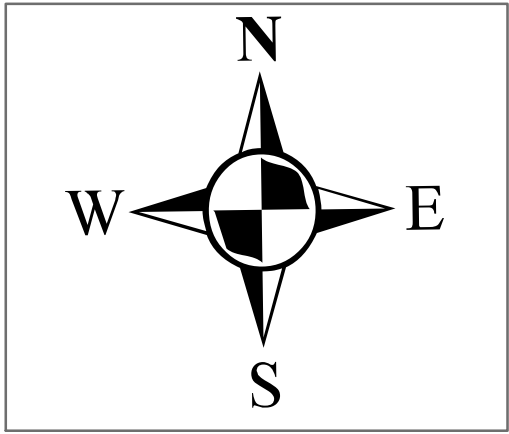


79°38'0"W 79°37'0"W 79°36'0"W 79°35'0"W 79°34'0"W 79°33'0"W 79°32'0"W 79°31'0"W 79°30'0"W



1:24,000  
Arnolds Valley, VA  
Datum: NAD83  
Magnetic North: 9° West Declination

State Boundary	Recommended Wilderness Area	Road
County Boundary	USFS; National Scenic Area	USFS Road
U.S. Forest Service	Management Area Prescription	EVAC Helispot
USFS Wilderness Area	Special Biological Area & Terrestrial Retardant Avoidance Area	Communication Site
Monongahela NF; WV	System Trail	Abandoned Mine
National Park Service	Appalachian Trail	Developed Recreation Site
VDGIF; State	Utility Line	
The Nature Conservancy		



Disclaimer: Magnetic North Declination changes by 2 minutes West per year. April, 2016 JRM

**Management Area Prescription**

1A:	Designated Wilderness
1B:	Recommended Wilderness Study Area
2C1:	Eligible Wild Rivers
2C3:	Eligible Recreational Rivers
3A:	Appalachian National Scenic Trail Corridor
4C1:	Geologic Areas
4D:	Botanical, Zoological Areas
4E:	Cultural Heritage Areas
4F:	Scenic Areas
4J:	Urban/Suburban Interface
4K:	Special Areas
4K1:	North Creek Special Area
4K2:	Hoop Hole Special Area
5A:	Administrative Sites
5B:	Designated Communication Sites
5C:	Designated Utility
6:	Old-Growth Forest Communities
6A:	Old-Growth Forest Communities Not Associated with Disturbance
6B:	Old-Growth Forest Communities Dependent on Fire
6C:	Old-Growth Forest Communities Associated with Disturbance
7A:	Scenic Byway Corridors
7B:	Scenic Corridors
7C:	OHV Routes and ATV Use Areas
7D:	Concentrated Recreation Zones
7E1:	Dispersed Recreation Areas—Unsustainable
7E2:	Dispersed Recreation Areas—Sustainable
7F:	Blue Ridge Parkway Visual Corridor
7G:	Pastoral Landscapes
8A:	Mix of Successional Habitats in Forested Landscapes
8B:	Early Successional Habitat Emphasis
8C:	Black Bear Habitat Management
8E1:	Ruffed Grouse/Woodcock Habitat Emphasis
8E2:	Peaks of Otter Salamander Habitat Conservation Areas
8E2a:	Indiana Bat Hibernacula Protection Areas
8E2b:	Indiana Bat Primary Cave Protection Areas
8E2c:	Indiana Bat Secondary Cave Protection Areas
8E2d:	Old Field Habitat Emphasis
8E2e:	Old Field Habitat Emphasis
8E2f:	Source Water Protection Watersheds
8E2g:	Reference Watersheds
8E2h:	Watershed Restoration Areas
8E2i:	Aquatic Habitat Areas
8E2j:	Rare Communities
8E2k:	Maintenance and Restoration of Bottomland Hardwoods
8E2l:	Management, Maintenance and Restoration of Forest Communities
8E2m:	High Quality Forest Projects
8E2n:	Riparian Corridors—Streams, Lakes, Wetlands, and Floodplains
8E2o:	Remote Backcountry Recreation—Few Open Roads
8E2p:	Remote Backcountry Recreation—Non-Motorized
8E2q:	Natural Processes in Backcountry Remote Areas