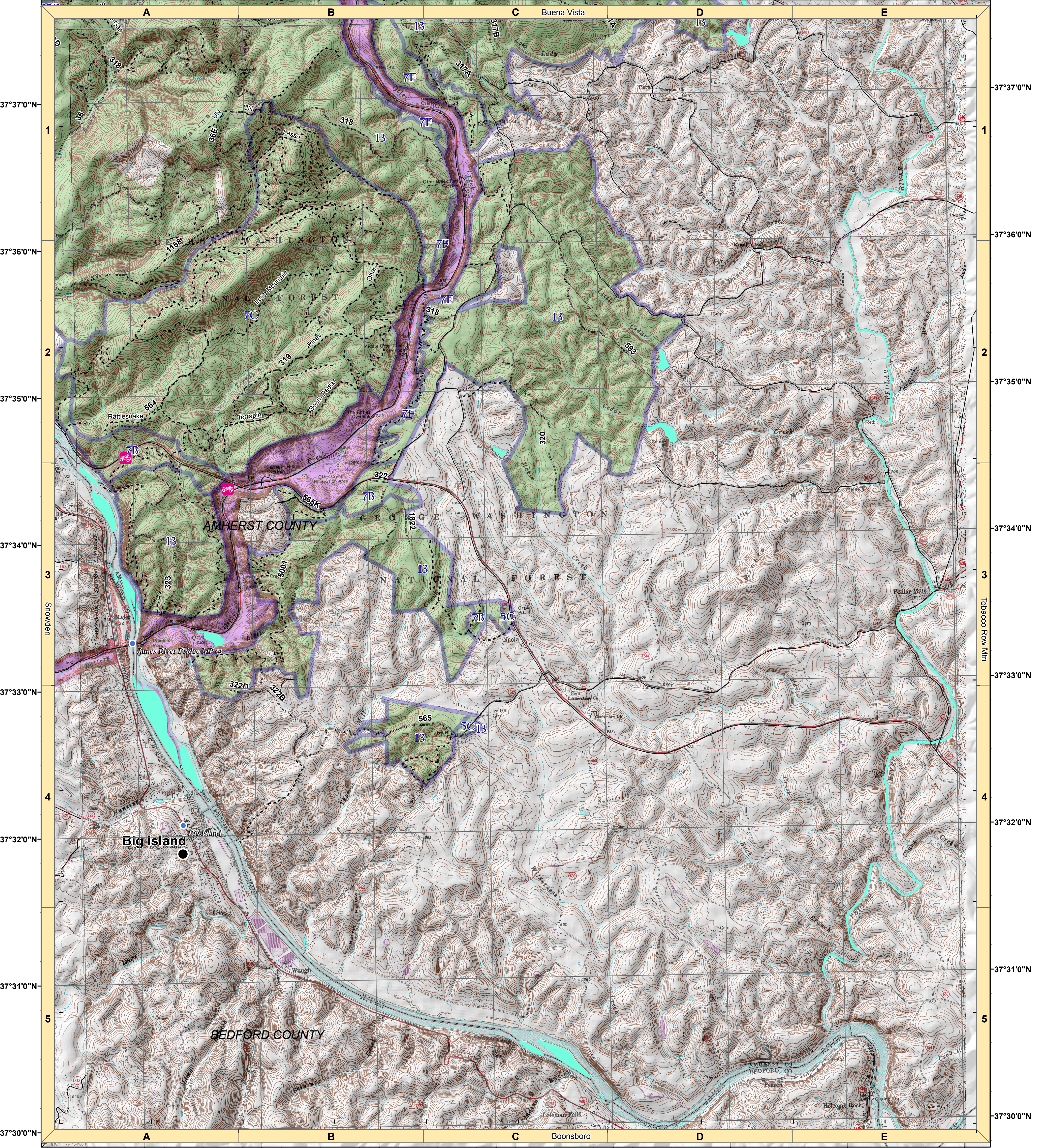


79°22'0"W 79°21'0"W 79°20'0"W 79°19'0"W 79°18'0"W 79°17'0"W 79°16'0"W 79°15'0"W

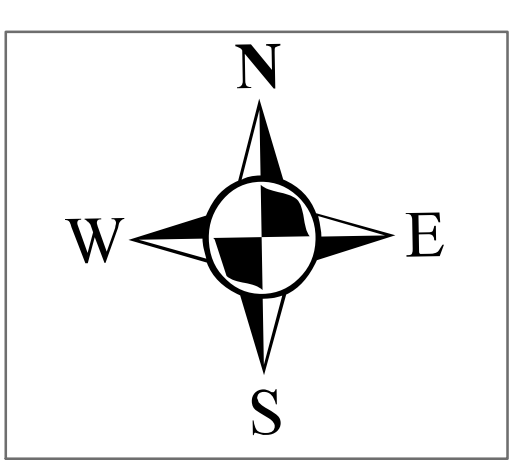


79°22'0"W 79°21'0"W 79°20'0"W 79°19'0"W 79°18'0"W 79°17'0"W 79°16'0"W 79°15'0"W

- State Boundary
- County Boundary
- U.S. Forest Service
- USFS Wilderness Area
- Monongahela NF; WV
- National Park Service
- VDGIF; State
- The Nature Conservancy
- Recommended Wilderness Area
- USFS; National Scenic Area
- Management Area Prescription
- Special Biological Area & Terrestrial Retardant Avoidance Area
- System Trail
- Appalachian Trail
- Utility Line
- Road
- USFS Road
- EVAC Helispot
- Communication Site
- Abandoned Mine
- Developed Recreation Site

0 0.5 1 2 Miles

1:24,000  
Big Island, VA  
Datum: NAD83  
Magnetic North: 9° West Declination



Management Area Prescription	
1A:	Designated Wilderness Area
1B:	Recommended Wilderness
2C2:	Scenic River Corridor
2C3:	Recreation River Corridor
4A:	Appalachian Trail Corridor
4B:	Research Natural Area
4C1:	Geologic Area
4D:	Special Biological Area
4D1:	Key Natural Heritage Community
4F:	National Scenic Area
5A:	Administrative Site
5B:	Communication Site
5C:	Utility Corridor
7A1:	Scenic Tour Byway
7B:	Scenic Corridor & Viewshed
7C:	ATV Area
7D:	Concentrated Recreation
7E1 & 7E2:	Dispersed Recreation
7F:	Blue Ridge Parkway Corridor
7C:	Pastoral Landscapes & Rangelands
8E4:	Indiana Bat Primary Protection
8E4b:	Indiana Bat Secondary Protection
8E7:	Shenandoah Mountain Crest
12D:	Remote Backcountry
13:	Mosaics of Wildlife Habitat

Disclaimer: Magnetic North Declination changes by 2 minutes West per year.

April, 2016  
JRM