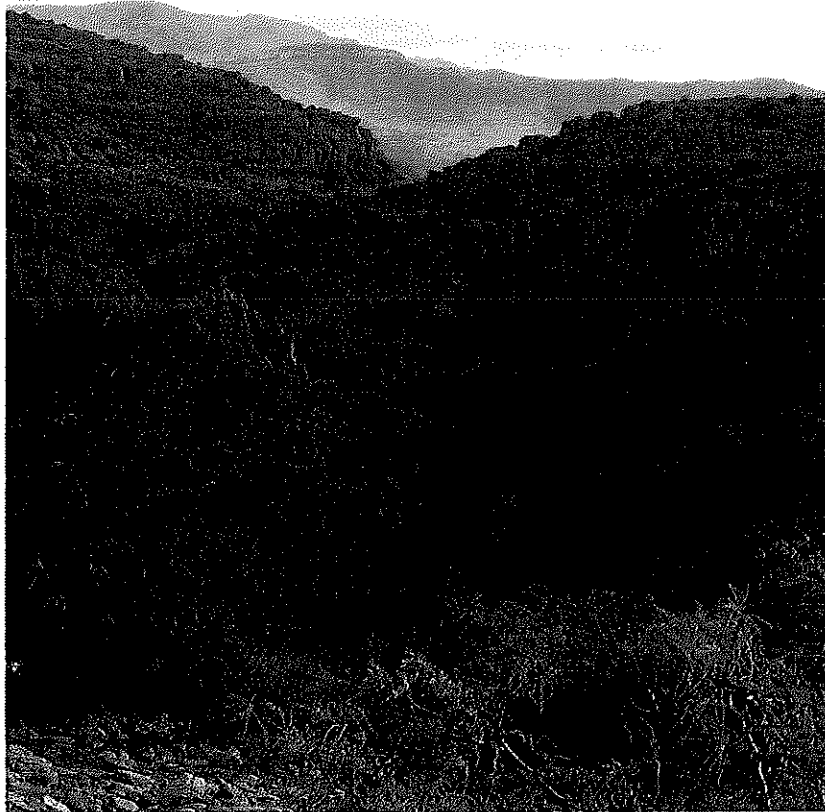


Oak Fire

AZ-CNF-000670/P3H56L (0305)



Incident Action Plan
Day Operational Period
July 3, 2014

INCIDENT OBJECTIVES	1. Incident Name Oak	2. Date 07/2/2014	3. Time 1600
----------------------------	--------------------------------	-----------------------------	------------------------

4. Operational Period
07/03/2014 DAY 0630-2000

5. General Control Objectives for the Incident (include alternatives)
1. Provide for firefighter, aviation, and public safety.
 2. Prevent fire from spreading to private lands and protect historic structures.
 3. Try to contain fire activity within the Coronado National Forest Boundary.
 4. Manage this natural ignition fire to improve wildlife habitat and forage; improve rangeland conditions; watershed conditions; improve forest health.
 5. Minimize fire severity impacts to T&E habitat (i.e. Chiricahua Leopard Frog, Mexican spotted owl). Try to maintain buffer zones to trap sediment.
 6. Utilize Minimum Impact Suppression Tactics (MIST) when conducting fire management operations in the Wilderness.
 7. Work with media outlets and social media tools to provide the public timely and accurate information.

6. Weather Forecast for Period

See attached Weather Forecast

7. General Safety Message

Driving on Forest Roads takes your full attention!

8. Attachments (mark if attached)

X	Organization List - ICS 203		Incident within Incident		
X	Div. Assignment Lists - ICS 204	X	Air Operations - ICS 220		
X	Communications Plan - ICS 205	X	Safety message		
X	Medical Plan - ICS 206			X	Unit Log-ICS 214

9. Prepared by (Planning Section Chief) Doug Hardy	10. Approved by (Incident Commander) Scott Glaspie ICT3
--	---

ORGANIZATION ASSIGNMENT LIST

1. Incident Name		
Oak		
2. Date	3. Time	
07/2/2014	1500	
4. Operational Period		
07/03/2014 Day 0630-2000		
Position	Name	
5. Incident Commander and Staff		
Incident Commander	Scott Gaspie	
Dep Incident Commander	Buddy Zale	
Safety Officer	John McGee 7/8 Mike Cachero (T) 7/7	
Safety Officer		
Information Officer	Anna Iwaki (t)	
Information Officer	Heidi Schewell /Brenda Jensen	
6. Agency Representative		
Agency Rep	Kent Ellett	
Resource Advisors	Anne Casey James Heitholt	
State of Arizona		
Graham County		
7. Planning Section		
Plan Section Chief	Doug Hardy	
Resources Unit	Jay Yancick	
SOPL	Justin Kaber Mark Pater	
Fire Behavior Analyst	Ryan Whiteaker	
LTAN	Tara Umphries (T) Tessa Nicolet	
Status Check-in		
Computer Tech		
GIS Specialist	Devin Quintana Sharisse Fisher (T)	
8. Logistics Section		
Chief	Dean McAllister	7/7
Chief (t)	Brian Hicks	7/4
Facilities Unit		
Ground Support		
Purchasing	Lorean Hennings	
Communications Unit		
Medical Unit	John Conger	
Food Unit Leader	Earl Christian	
Base Camp Manager	Al Kingsley	
Base Camp Manager		

9. Operations Section		
Chief	Roy Hall	
Planning Ops		
a. Division/Groups		
Branch Director		
Deputy		
Division/Group	T	Larry Bear 7/8
Division/Group		
Division/Group	U	Darrell Miller 7/8
Division/Group	V	Gary Cordes
Structure Group		
Division/Group		
b. Division/Groups		
Division/ Group		
Division/Group		
Division/Group		
Division/Group		
c.		
Branch Director		
Division/Group		
Division/Group		
Division/Group		
d.		
Division/Group		
Division/Group		
Division/Group		
d. Air Operations Branch		
Air Operations Branch Director	Don Clark	
Air Support Group Supervisor		
Air Tactical Group Supervisor		
Helibase Manager	T Randall J Heesacker (T)	
Helicopter Ignitions Manager		
Helicopter Manager		
Air Tanker Coordinator		
10. Finance Section		
Time Unit	Lisa Angle	
Cost Unit	Norene Norris	
Personnel Recorder		
Prepared by PSC2		
Douglas Hardy		

DISCUSSION...MOISTURE WILL CONTINUE TO INCREASE THROUGH FRIDAY...
RESULTING IN CHANCE OF MAINLY AFTERNOON AND EVENING THUNDERSTORMS.
THE INCREASED MOISTURE WILL ALSO LEAD TO A GRADUAL LOWERING OF
DAYTIME TEMPERATURES AND HIGHER RELATIVE HUMIDITY VALUES. EXPECT
STRONG...GUSTY AND ERRATIC WINDS WITH ANY THUNDERSTORMS.

.THURSDAY...

SKY/WEATHER.....PARTLY CLOUDY THEN BECOMING MOSTLY CLOUDY.
SCATTERED SHOWERS AND THUNDERSTORMS IN THE
AFTERNOON.
MAX TEMPERATURE.....91 TO 94 DEGS.
MIN HUMIDITY.....17 TO 20 PCT.
20-FOOT WINDS.....EAST 7 TO 12 MPH IN THE MORNING...BECOMING
EAST TO SOUTHEAST 10 TO 15 MPH IN THE
AFTERNOON. STRONG...GUSTY AND ERRATIC WINDS
NEAR ANY THUNDERSTORMS.
LAL.....4.
CHANCE OF RAIN.....40 PERCENT.
HAINES INDEX.....4 LOW.

.THURSDAY NIGHT...

SKY/WEATHER.....MOSTLY CLOUDY THEN BECOMING PARTLY CLOUDY.
SCATTERED SHOWERS AND THUNDERSTORMS IN THE
EVENING...THEN A SLIGHT CHANCE OF SHOWERS AND
THUNDERSTORMS THROUGH THE NIGHT.
MIN TEMPERATURE.....71 TO 74 DEGS.
MAX HUMIDITY.....50 TO 53 PCT.
20-FOOT WINDS.....EAST TO SOUTHEAST 10 TO 15 MPH EARLY IN THE
EVENING...DIMINISHING TO 5 TO 10 MPH BY LATE
EVENING AND 2 TO 7 MPH OVERNIGHT. STRONG...
GUSTY AND ERRATIC WINDS NEAR ANY THUNDERSTORMS.
LAL.....4 UNTIL 2200...THEN 3.
CHANCE OF RAIN.....40 PERCENT UNTIL 2200...THEN 20 PCT.
HAINES INDEX.....4 LOW.

.FRIDAY...

SKY/WEATHER.....PARTLY CLOUDY THEN BECOMING MOSTLY CLOUDY.
SCATTERED SHOWERS AND THUNDERSTORMS IN THE
AFTERNOON.
MAX TEMPERATURE.....89 TO 92 DEGS.
MIN HUMIDITY.....19 TO 22 PCT.
20-FOOT WINDS.....SOUTHEAST 7 TO 12 MPH. STRONG...GUSTY AND
ERRATIC WINDS NEAR ANY THUNDERSTORMS.
LAL.....4.
CHANCE OF RAIN.....40 PERCENT.
HAINES INDEX.....4 LOW.

FIRE BEHAVIOR FORECAST

FORECAST NUMBER: 6	TYPE OF FIRE: Wildfire
FIRE NAME: Oak	OPERATIONAL PERIOD: Day 7/3/2014
DATE ISSUED: 7/2/2014	TIME ISSUED: 2000
UNIT: Coronado Nat'l Forest, Safford RD	SIGNED: _____
	Typed/printed: Ryan Whiteaker, FBAN

INPUTS

WEATHER SUMMARY:

Temp: 91-94, RH: 17-20%; Winds: E 7-12 in the morning Shifting to the E/SE to 10-15 in the afternoon. Gusty and erratic near any storms. Haines of 4, Low.

OUTPUTS

FIRE BEHAVIOR

GENERAL: The fire activity throughout the fire has been slope and fuels driven. The instability associated with the high Haines has aided in an increase in fire activity on those days. This is either from roll out or fire that has backed down slopes and then aligned. Fuels are in the area and very receptive to ignition. There is also a large component of dead/dead and down fuels in the entire mountain range. This is in large part to the drought and the heavy freeze in 2011 that killed or set back a large number of oak trees in Southern AZ. Leaf drop could also be contributing to backing fire spread. Any outflow winds from approaching thunderstorms could cause rapid rates of spread in all directions anywhere that heat and open flame is present. Any new starts could see rapid rates of spread as well.

The fuel moisture readings are: 1000 hrs are 3% at noon creek and 7% in Shake Trail. The 100 hour fuel moistures in the same sample sites are in the very low single digits. Live fuel moistures are 87% in the Manzanita, 92% in the Juniper, 93% in the Emery Oak and 88% in the AZ White Oak. The burning period tends to be 0900 to 2000- 2200 at most elevations although it has started as early as 0700 and go well into the night.

ROS: 40-50 ch/hr. FL: brush 5-10 feet. Higher with alignment.
PIG:90%

SPECIFIC:

DIV U: The fire will continue to back its way down towards Rattlesnake Canyon. The best potential for the fire to make into Rattlesnake is backing down Corral Canyon and Brushy Canyon. If it gets down into the bottom of Rattlesnake it has plenty of potential to continue to move to the west and north and threaten the cabins in the bottom of the canyon. Be aware that the fire could get seated in the canyon and gain alignment.

DIV T: The fire will continue to back down some of the east facing slopes up high and make some short uphill runs. Most of this will be up high on the slopes. This portion of the fire has been the earliest piece to show fire activity due to the sun hitting those slopes and warming them first.

DIV V: Backing fire with the upslope runs will be the activity here today. Once the fire backs down and lines up with wind and slope there will be short runs. This could be intense for a short duration.

AIR OPERATIONS: Expect more cloud build up this afternoon. Turbulence will increase with these clouds and outflow winds could be very strong. Strong outflow winds could impact helicopter operations this afternoon.

SAFETY.

Potential today for thunderstorms. Outflow winds could cause some issues if a cell passes over the fire. This time of year rains can be short duration but high intensity. .

"Bigfoot tries to capture pictures of him. "
The Most Interesting Man in the World

Oak Incident General Weather Outlook

For Planning Purposes Only, see the IAP for the Official Forecast

Precip Chance (%)	50	35	35	30	35
LAL	4	3	3	3	3
Ridge Wind (mph)	10	14	14	20	15
Wind Direction*	SE	NW	W	NW	W
Min Humidity (%)	21	23	25	23	23
Haines Index	4	4	4	3	3

Moderate Burning Conditions	Take Caution - Critical Burning Conditions	Extreme Burning Conditions
-----------------------------	--	----------------------------

KEY:
 Clouds > 25 %
 Avg Max Temp < 85 F
 Precip Chance > 49 %
 LAL < 5
 Ridge Wind < 15 mph
 *Wind Direction Criticality of wind direction highly dependent on burn operations and/or structures threatened
 Min Humidity > 20 %
 Haines Index < 5

15 to 24 %
 85 to 95 F
 15 to 49 %
 5
 15 to 24 mph
 > 24 mph
 < 15 %
 > 95 F
 < 15 %
 > 5
 < 10 %
 6

Five or more EXTREME blocks in a day equals the potential for a Critical Weather Day

This forecast matrix was developed for the Oak Wildfire and uses criteria specific for this incident. Every incident will respond to conditions differently and adjustments to the formulas and or categories used may be needed.

***Adapted from Halstead, ID Fire

Division Assignment List		1. Branch I		2. Division/Group U			
3. Incident Name Oak		4. Operational Period Date: July 3, 2014 Time: 0630 – 2000 hours					
5. Operations Personnel							
Strategic Operations		Division/Group Supervisor		Darrell Miller			7/8
Planning Operations		Air Tactical Group Supervisor					
Line Operations		Roy Hall		7/16			
6. Resources Assigned this Period							
Strike Team/Task Force/ Resource Designator		Leader		Number Persons	Trans. Needed	Drop Off PT./Time	Pick Up PT./Time
T1Globe IHC		7/8 Candice Kutrosky		20	N	0630	2000
T2Crew 4		7/16 J.Zigler / Howler (t)		20	N	0630	2000
SOF2		7/8 D. McRea		1	N	0630	2000
EMTB		A. Egurrola		1	N	0630	2000
7. Control Operations							
Conduct operations in support of suppression as directed.							
Burnout where feasible to reduce fire effects to meet objectives.							
Continue to assess holding opportunities within the Division.							
Continue structure protection at Powers Garden and for other structures to the South.							
Scout access and control opportunities North towards Peach Tree Tank area.							
8. Special Instructions:							
Scout and assess access up Horse Mountain Trail.							
9. Division/Group Communication Summary							
Function	Frequency	System	Channel	Function	Frequency	System	Channel
Command		King	12	Logistics			
Tactical Div/Group	Tac1	King	9	Air to Ground			
Prepared by (Resource Unit Leader)		Approved by (Planning Section Chief)			Date		Time
D Hardy		Doug Hardy			7/2/2014		1800

DIVISION ASSIGNMENT LIST			1. Branch I		2. Division/Group V	
3. Incident Name Oak			4. Operational Period Date: July 3, 2014 Time: 0630 -- 2000 hours			
5. Operations Personnel						
Strategic Operations				Division/Group Supervisor		Gary Cordes
Planning Operations				Air Tactical Group Supervisor		
Line Operations		Roy Hall	7/16			
6. Resources Assigned this Period						
Strike Team/Task Force/ Resource Designator		Leader		Number Persons	Trans. Needed	Pick Up PT./Time
T2 DOC Ft Grant		7/9	L. Vizcaino	20	N	2000
Ironwood IHC		7/7	Brian Robinson	20	N	2000
T6 E-533/IA		7/4	Gustafson	6	N	2000
T4 FS Dozer			D Mayer	1	N	2000
T6 E-46		7/16	J. Delgado/D. Williams (T)	5	N	2000
Chipper/Dump Truck					N	2000
T2 Dozer Earthworks				1	N	2000
SOF2		7/9	Steve Hensel	1	N	2000
READ		7/7	James Heitholt	1	N	2000
READ			Greg Sasek	1	N	2000
EMT also in Div T			John Conger	1	N	
7. Control Operations Continue to scout from division break south and assess values at risk. Prep possible check lines. Place adequate signage for Division familiarization. Working in High Creek Use Chipper to reduce ladder fuels for possible black line operations.						
8. Special Instructions: Utilize human repeaters within Division when necessary to maintain communications. Place flagging on all proposed lines to maintain clarity. Strategically locate a T6 Engine towards Bonita for possible IA. As opportunity allows assign 2 water tenders to fill pumpkins to support possible black line operations.						
9. Division/Group Communication Summary						
Function	Frequency	System	Channel	Function	Frequency	System
Command		King	12	Logistics		
Tactical Div/Group	Tac 3	King	11	Air to Ground	See Comm Plan	
Prepared by (Resource Unit Leader) D Hardy		Approved by (Planning Section Chief) Doug Hardy		Date 7/2/2014		Time 1800

AIR OPERATIONS SUMMARY

PREPARED BY: Don Clark

PREPARED DATE/TIME: 07/02/2014 14:30

1. INCIDENT NAME: Oak Fire
 2. OPERATIONAL PERIOD DATE: 7/3/14 START TIME: 08:00 END TIME: 19:00
 Oak Helibase - SUNRISE: 05:14 SUNSET: 19:31 Cutoff: 20:01

3. REMARKS (Safety Notes, Hazards, Air Operations Special Equipment, etc.): High Density Altitude, Dust, Smoke.
 Ranger 54 is available for 24 Hour Medivac Support. NO night Short Haul.
 Contact through Air Attack/OPS/DIVS . Place Phone Order through DPS Dispatch, (520)-746-4609
 The following Water Tenders are assigned to Air Operations: E-6(T-3), E-11(T-3), E-16(T-2), E-19(T-3), E-20(T-3), E-21(T-3), E-17(T2), E-22 (T2).

4. MEDEVAC A/C:
 Ranger 54
 *24 Hr. Availability
 *Short Haul, Toe In, Rappel, Hover

5. TFR: 4/4785
 Radius: 6 NM
 Altitude: 10,000 = MSL
 Center point: Lat: 32°38.97
 Long: 110°19.34

6. PERSONNEL	Phone	7. FREQUENCIES	AM	FM	8. FIXED-WING	# Avail / Type/ Make-Model / FAA N# / Base(s)
AOBD: Don Clark	(928)245-2539	AIR/AIR FW:	123.125		Airtankers Water / Retardant	Willcox/Safford/Libby/Gateway
ATGS: Mark Nunez	805.975.5227	AIR/AIR RW:	123.125		Leadplanes	TBA
ATGS:		AIR/GROUND:		168.6625		
ASGS: Rob Zielke	970.232.5458	COMMAND:	Orange Rpt Tone (2) 123.0			
Oak Helibase:	406.579.2875	COMMAND RPT OAK RPT.	Rx:167.1000 Tx: 169.7500 Tx Tone: 162.2		ATGS Aircraft	Air Attack over Fire at 0900
ATB MGR:		DECK FREQ:		163.1000		
		AIR GUARD:		168.6250 (110.9 RXTX)	Other	

9. HELICOPTERS (Use Additional Sheets As Necessary)

FAA N#	TY	MAKE/MODEL	BASE	AVAIL	START	REMARKS	FAA N#	TY	MAKE/MODEL	BASE	AVAIL	START	REMARKS
1HQ	3	Astar	Safford	0730	0800	Logistical/Tactical Support	73H	2	Bell 205 ++	Safford	0730	0800	Logistical/Tactical Support
2TA	3	Astar	Safford	0730	0800	PSD/Logistical/Tactical	1SC	2	Bell 212 HP	Safford	0730	0800	Logistical/Tactical Support
RANGER 54	3	Bell 407	Safford	24 HRS		MEDEVAC/RESCUE	795	1	CH54A	Safford	0730	0800	Tactical Support

APPROVAL: /s/ Don Clark

Incident:

Oak Fire

Date:

July 3, 2014

0630 - 2000



Health and Safety Message

It's better well done than well said



Fire Weather

The weather is changing. The chance for thunderstorms, while slight, dictates you review p. 21 in your IRPG. Have a plan to deal with them before they happen. It is still hot and dry so maintain your hydration and keep an eye on each other.

Driving:

Driving continues to present significant hazards as the roads deteriorate and we fix certain portions. Heavy equipment will be on the roads so heads up. Pay close attention to defensive driving with seat belts and lights on. Roads can be steep, rocky and rough on tires, so slow down. If you have doubts about a section of road, scout it out or try a different route.

Communications

Establish and test the communication system, including Tac, Command, and Air/Ground channels before you need them. There will be dead spots caused by elevation and topographical features so use human repeaters if necessary. Cell phone coverage may be poor, spotty or non-existent.

Accident/Injury Procedures

In your daily safety sessions, practice "What if..." scenarios about how you would medevac a serious injury from your location. Review section 8 of the ICS 206 (Medical Plan) and pages 108 & 109 in your IRPG.

Air Operations

This fire several aircraft supporting ground crews. They are a critical part of the overall strategy, so when you order them up be ready for them when they arrive. Assure everyone is out of the drop area, you have good communications between ground and air, and continue to Look UP, Look Down, Look Around. Review blue pages 56-59 in your IRPG.

Safety Officers: John McGee, Steve Hensel, Damon McRae, Mike Cachero (T)

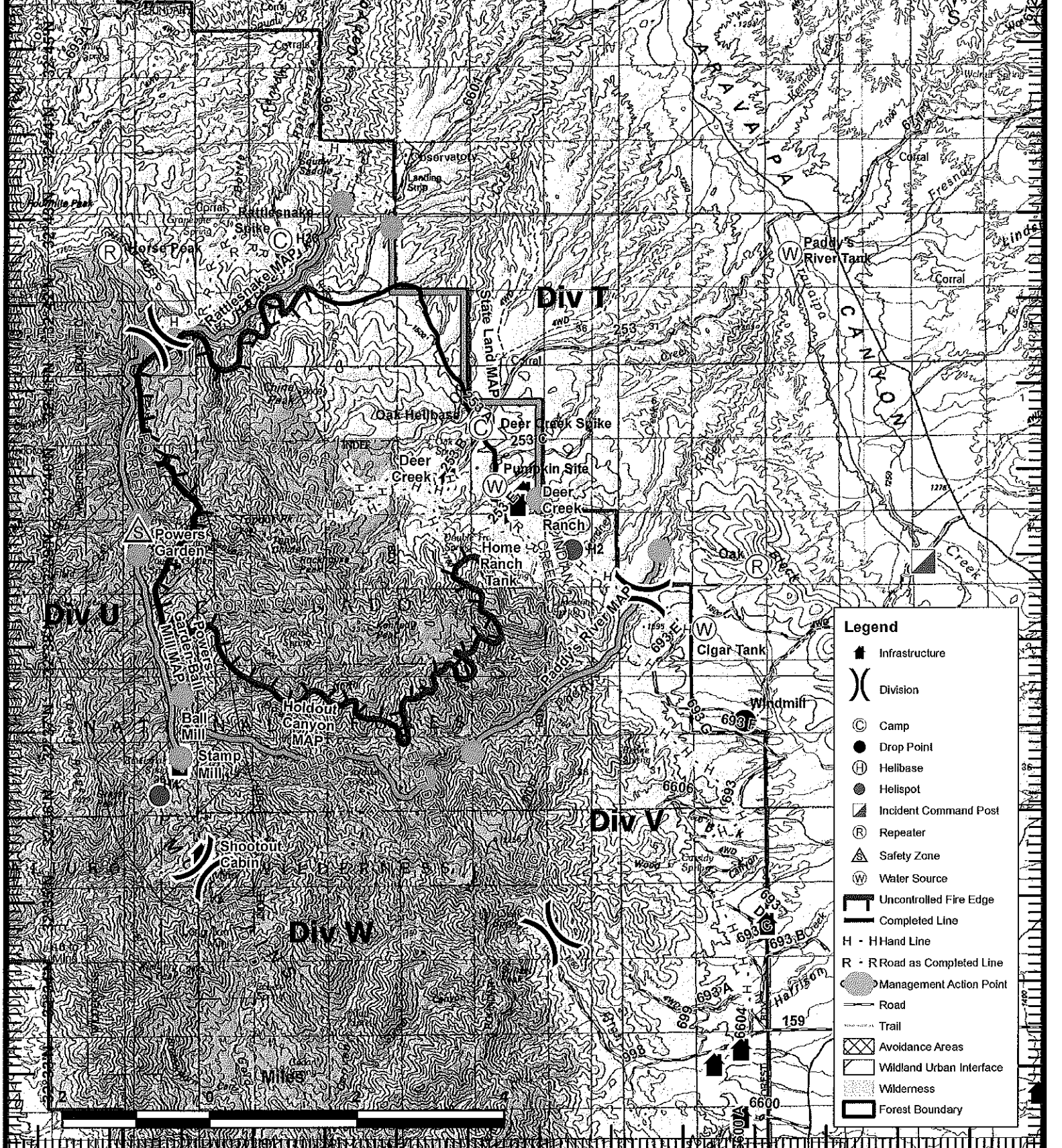
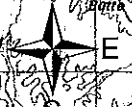
INCIDENT RADIO COMMUNICATIONS PLAN ICS 205 (9/96)		1. INCIDENT NAME Oak	2. DATE/TIME PREPARED 1930	3. OPERATIONAL PERIOD DATE/TIME 7/3/2014		
4. BASIC RADIO CHANNEL UTILIZATION						
SYSTEM/ CACHE	GE CHANNEL	KING CHANNEL	FUNCTION	FREQUENCY	ASSIGNMENT	REMARKS
		1		RX 169.6000 TX 169.6000 TX Tone 100.0	Admin Simplex	1 West Peak 2 Mule 3 Atascosa/Antelope
		2		RX 169.6000 TX 170.5250 TX Tone 103.5	Admin RPT	4 Bigelow 5 Hopkins 6 Heliograph
		3		RX 168.1500 TX 168.1500 TX Tone 107.2	Fire Simplex	7 Red Mountain 8 Mt. Lemmon 9 Monte Vista
		4		RX 168.1500 TX 172.2750 TX Tone 110.9	Fire RPT	10 Mobile Rpt 1 11 Mobile Rpt 2
		5		RX 151.4000 TX 159.4050 TX Tone 114.8	AZ STATE Fire	<u>Incident Repeaters, You</u>
		6		RX 154.2800 TX 154.2800 TX Tone 118.8	Mutual Aid	*Note
		7		RX 173.8250 TX 166.3125 TX Tone 123.0	BLM Rpt	Press zero (0) on the keypad to hit Oak Fire Repeater
		8		RX 163.7125 TX 163.7125 TX Tone 127.3	Common	
		9	DIV U	RX 168.050 TX 168.050 TX Tone 131.8	Oak TAC 1	
	-	10	DIV T and Night Ops	RX 168.200 TX 168.200 TX Tone 141.3	Oak TAC 2	
	-	11	DIV V	RX 168.600 TX 168.600 TX Tone 156.7	Oak TAC 3	
	-	12	Command	RX 167.1000 TX 169.7500 TX Tone 162.2	Oak RPT	
	-	13		RX 168.6625 TX 168.6625	A/G56	
		14		RX 166.9625 TX 166.9625	A/G 32	
		15		RX 170.6875 TX 166.5750 TX Tone 162.2	Horse Rpt	
		16		RX 168.6250 TX 168.6250 TXRX Tone 110.9	Air Guard	
ICS 05 9/96		5. PREPARED BY (COMMUNICATIONS UNIT)				

MEDICAL PLAN	1. Incident Name	2. Date Prepared	3. Time Prepared	4. Operational Period					
	OAK FIRE	6/27/14	0900	ALL					
5. Incident Medical Aid Station									
Medical Aid Stations		Location			Paramedics				
					Yes	No			
Medic John Conger		ICP/ Div T / Div V			X				
EMTB Andres Egurrola		Div U				X			
6. Transportation									
A. Ambulance Services									
Name		Address		Phone		Paramedics			
						Yes	No		
Southwest		209 9 th St. Safford, AZ		(928) 348-9896		X			
B. Air Ambulances									
Name		Location			Paramedics				
					Yes	No			
Ranger 54		Willcox Airport		(520) 746-4609		X			
Air Evac		Safford		(800)642-7828		X			
Life Net		Willcox		Thru Dispatch		X			
7. Hospitals									
Name	Address		Travel Time		Helipad		Burn Center		
			Air	Ground		Yes	No	Yes	No
Mount Graham Regional Hosp	1600 S, 20 th Ave Safford, AZ		15-30 Min	1-2 hour	(928) 348-4000	X			X
TMC	5301 E, Grant Rd. Tucson, AZ		45 Min	3-4 hour	(520)873-3000	X			X
Northern Cochise Hospital	Willcox, AZ		30 Min	1.5 hour	(520) 384-3541	X			X
St. Joseph's Hospital	350 N. Wilmot Tucson, AZ		45 Min	3-4 hour	(520)873-3000	X			X
UAMC	1501 N. Campbell Tucson, AZ		50 Min	4-5 hour	(800) 524-4784	X		X	
8. Medical Emergency Procedures									
In the event of a medical emergency the On-scene IC will provide the following information to Dispatch:									
1. Declare the nature of the emergency.									
a. Medical injury/illness? If injury or illness is Life threatening? (Medical transport vs. Medical Emergency).									
2. If Life threatening, request that the designated frequency be cleared for Emergency traffic.									
3. Identify an On-scene Incident Commander by Last Name (i.e. Jones).									
4. Identify nature of the incident, number of injured, patient assessment(s), and location (geographic and GPS)									
5. Identify On-scene medical personnel (i.e. Smith).									
6. Identify preferred method of patient transportation from scene.									
7. Request any additional resources and/or equipment needed.									
8. Document all information received and transmitted on the phone and radio.									
9. Identify any changes in the On-scene IC or Medical personnel as they occur. <u>REFER TO IRPG PG. 108-109</u>									
Prepared by (Medical Unit Leader)					10. Reviewed by (Safely Officer)				
John Conger CEP (EMPF)					Mike Cachero SOF2 (t)				

110°22'W 110°20'W 110°18'W 110°16'W 110°14'W 110°12'W 110°10'W 110°9'

Devin Quintana
7/2/2014
19:14 hrs

Oak Fire
AZ-CNF-670
07/03/2014
Day Shift
NAD 83, UTM Zone 12
13,137 Acres as of 1430 hrs 7/2/14



Legend	
	Infrastructure
	Division
	Camp
	Drop Point
	Helibase
	Helispot
	Incident Command Post
	Repeater
	Safety Zone
	Water Source
	Uncontrolled Fire Edge
	Completed Line
	H - H Hand Line
	R - R Road as Completed Line
	Management Action Point
	Road
	Trail
	Avoidance Areas
	Wildland Urban Interface
	Wilderness
	Forest Boundary



Div W

Div V

Div T

Div U

Miles



UNIT LOG	1. Incident Name	2. Date Prepared	3. Time Prepared
4. Unit Name/Designators	5. Unit Leader (Name and Position)		6. Operational Period
7. Personnel Roster Assigned			
Name	ICS Position	Home Base	
8. Activity Log			
Time	Major Events		
9. Prepared By:			