

Oak Fire

AZ-CNF-00067/P3H56L (0305)



Photo by Anne Casey

Incident Action Plan

Day Operational Period

June 29, 2014



INCIDENT OBJECTIVES	1. Incident Name Oak	2. Date 06/28/2014	3. Time 1600
----------------------------	--------------------------------	------------------------------	------------------------

4. Operational Period
06/29/2014 DAY 0630-2000

5. General Control Objectives for the Incident (include alternatives)
1. Provide for firefighter, aviation, and public safety.
 2. Try to contain fire activity within the Coronado National Forest Boundary.
 3. Manage this natural ignition fire to improve wildlife habitat and forage; improve rangeland conditions; watershed conditions; improve forest health.
 4. Minimize fire severity impacts to T&E habitat (i.e. Chiricahua Leopard Frog, Mexican spotted owl). Try to maintain buffer zones to trap sediment.
 5. Utilize Minimum Impact Suppression Tactics (MIST) when conducting fire management operations in the Wilderness.

6. Weather Forecast for Period

See attached Weather Forecast

7. General Safety Message

Driving on Forest Roads takes your full attention!

8. Attachments (mark if attached)

X	Organization List - ICS 203		Incident within Incident		
X	Div. Assignment Lists - ICS 204	X	Air Operations -ICS 220		
X	Communications Plan - ICS 205	X	Safety message		
X	Medical Plan - ICS 206			X	Unit Log-ICS 214

9. Prepared by (Planning Section Chief) Doug Hardy	10. Approved by (Incident Commander) Scott Glaspie ICT3
--	---

ORGANIZATION ASSIGNMENT LIST

1. Incident Name	
Oak	
2. Date	3. Time
06/28/2014	1500
4. Operational Period	
06/29/2014 Day 0630-2000	
Position	Name
5. Incident Commander and Staff	
Incident Commander	Scott Glaspie
Incident Commander (T)	
Safety Officer	John McGee 7/8
Safety Officer	
Information Officer	
Information Officer	Heidi Schewell /Brenda Jensen
6. Agency Representative	
Agency Rep	Kent Ellett
Resource Advisors	Anne Casey
State of Arizona	
Graham County	
7. Planning Section	
Plan Section Chief	Doug Hardy
Resources Unit	Jay Yancick
SOPL	Justin Kaber
Fire Behavior Analyst	Ryan Whiteaker
LTAN (T)	Tara Umphries
Status Check-in	
Computer Tech	
GIS Specialist	Devin Quintana
8. Logistics Section	
Chief	Dean McAllister
Chief (t)	Brian Hicks
Facilities Unit	
Ground Support	
Purchasing	
Communications Unit	
Medical Unit	John Conger
Food Unit Leader	
Base Camp Manager	
Base Camp Manager	

9. Operations Section	
Chief	Milke Cachero (day)
a. Division/Groups	
Branch Director	
Deputy	
Division/Group	T Larry Bear 7/8
Division/Group	
Division/Group	U Darrell Miller 7/8
Division/Group	V Gary Cordes
Structure Group	
Division/Group	
b. Division/Groups	
Division/ Group	
Division/Group	
Division/Group	
Division/Group	
c.	
Branch Director	
Division/Group	
Division/Group	
Division/Group	
d.	
Division/Group	
Division/Group	
Division/Group	
d. Air Operations Branch	
Air Operations Branch Director	Don Clark
Air Support Group Supervisor	
Air Tactical Group Supervisor	
Helibase Manager	Ted Risch
Helicopter Ignitions Manager	J. Maloney
Helicopter Manager	
Air Tanker Coordinator	
10. Finance Section	
Time Unit	
Cost Unit	Norene Norris
Personnel Recorder	Lisa Angle
Prepared by PSC2	
Douglas Hardy	

DIVISION ASSIGNMENT LIST		1. Branch I		2. Division/Group T			
3. Incident Name Oak		4. Operational Period Date: June 29, 2014 Time: 0630 – 2000 hours					
5. Operations Personnel							
Strategic Operations		Division/Group Supervisor	Larry Bear				7/8
Planning Operations		Air Tactical Group Supervisor					
Line Operations	Mike Cachero	7/10					
6. Resources Assigned this Period							
Strike Team/Task Force/ Resource Designator		Leader	Number Persons	Trans. Needed	Drop Off PT./Time	Pick Up PT./Time	
Saguaro WFM	7/2	J. Thievener	9	N	0630	2000	
Ironwood IHC	7/7	Brian Robinson	20	N	0630	2000	
Palomar IHC	7/3	Hill	20	N	0630	2000	
Santa Fe IHC	6/29	Brandon Glenn	20	N	0630	2000	
T3 ENG Caminos	7/8	J. Roads	3	N	0630	2000	
T6 E-533	7/4	Gustafson	6	N	0630	2000	
T6 E-542	6/30	J. Nicholas	3	N	0630	2000	
TFLD	7/6	Darrel Howell	1		0630	2000	
EMT-P (Tubac)	7/6	J. Conger	1	N	0630	2000	
SOF2	7-9	Steve Hensel	1	N	0630	2000	
7. Control Operations Continue to patrol and hold division. Look for opportunities reduce fire effects to meet resource objectives. Find opportunities to build check lines where feasible. Hold and secure check line above Deer Creek Ranch.							
8. Special Instructions:							
9. Division/Group Communication Summary							
Function	Frequency	System	Channel	Function	Frequency	System	Channel
Command	See Comm Plan	King		Logistics			
Tactical Div/Group	Tac 2	King	10	Air to Ground	See Comm Plan		
Prepared by (Resource Unit Leader) D Hardy		Approved by (Planning Section Chief) Doug Hardy		Date 6/28/2014		Time 1800	

Division Assignment List		1. Branch I		2. Division/Group U			
3. Incident Name Oak		4. Operational Period Date: June 29, 2014 Time: 0630 – 2000 hours					
5. Operations Personnel							
Strategic Operations		Division/Group Supervisor		Darrell Miller			7/8
Planning Operations		Air Tactical Group Supervisor					
Line Operations	Mike Cachero	7/10					
6. Resources Assigned this Period							
Strike Team/Task Force/ Resource Designator		Leader	Number Persons	Trans. Needed	Drop Off PT./Time	Pick Up PT./Time	
Crew 4 (Safford)	7/3	J.Zigler / Howler (t)	20	N	0630	2000	
Globe IHC	7/8	Candice Kutrosky	20	N	0630	2000	
Del Rosa IHC	7/1	N. Gamboa	20	N	0630	2000	
T6 E-4664	7/9	D. Roper	3	N	0630	2000	
T6 E-541	7/1	Ostler	3	N	0630	2000	
SOF2	7/8	D. McRea	1	N	0630	2000	
EMTB		A. Egurola	1	N	0630	2000	
Wilderness READ		Greg Sasek	1	N	0630	2000	
READ		James Heitholt	1	N	0630	2000	
7. Control Operations							
Conduct operations in support of suppression as directed.							
Burnout where feasible to reduce fire effects to meet objectives.							
Continue to assess holding opportunities within the Division.							
Continue structure protection at Powers Garden and for other structures to the South.							
Scout access and control opportunities North towards Peach Tree Tank area.							
8. Special Instructions: Coordinate action with READ Heitholt							
9. Division/Group Communication Summary							
Function	Frequency	System	Channel	Function	Frequency	System	Channel
Command	See Comm Plan			Logistics			
Tactical Div/Group	Tac1	King	9	Air to Ground			
Prepared by (Resource Unit Leader) D Hardy		Approved by (Planning Section Chief) Doug Hardy		Date 6/28/2014		Time 1800	

DIVISION ASSIGNMENT LIST			1. Branch I		2. Division/Group V		
3. Incident Name Oak			4. Operational Period Date: June 29, 2013 Time: 0630 - 2000 hours				
5. Operations Personnel							
Strategic Operations				Division/Group Supervisor		Gary Cordes	
Planning Operations				Air Tactical Group Supervisor			
Line Operations		Mike Cachero 7/10					
6. Resources Assigned this Period							
Strike Team/Task Force/ Resource Designator		Leader		Number Persons	Trans. Needed	Drop Off PT./Time	Pick Up PT./Time
T2 DOC Crew 7/9		L. Viscairano		20	N	0630	2000
T6 Eng E-552 7/8		Steve Holley		6	N	0630	2000
7. Control Operations Continue to scout from division break south and assess values at risk. Prep possible check lines. Place adequate signage for Division familiarization.							
8. Special Instructions: Utilize human repeaters within Division when necessary to maintain communications. Place flagging on all proposed lines to maintain clarity.							
9. Division/Group Communication Summary							
Function	Frequency	System	Channel	Function	Frequency	System	Channel
Command	See Comm Plan			Logistics			
Tactical Div/Group	Tac 3	King	11	Air to Ground	See Comm Plan		
Prepared by (Resource Unit Leader) D Hardy		Approved by (Planning Section Chief) Doug Hardy			Date 6/28/2014		Time 1800

Oak Incident General Weather Outlook

For Planning Purposes Only, see the IAP for the Official Forecast

Forecast made 28 June/1600 - Fire Weather Forecaster, Tucson NWS Carl Cerniglia

Day	Sun	Mon	Tue	Wed	Thu	Fri
	29-Jun	30-Jun	1-Jul	2-Jul	3-Jul	4-Jul
Clouds @ 1500 (%)	0	5	30	40	50	50
Avg. Max Temp (F)	97	99	100	99	97	95
Precip Chance (%)	0	0	8	18	27	28
LAL	1	1	2	2	3	3
Ridge Wind (mph)	12	15	15	11	9	9
Wind Direction*	W	NW	NW	SW	S	SE
Min Humidity (%)	14	12	10	13	19	21
Haines Index	5	5	5	6	3	3

KEY:

Clouds	Moderate Burning Conditions	Take Caution - Critical Burning Conditions	Extreme Burning Conditions
Avg Max Temp	> 25 %	15 to 24 %	< 15 %
Precip Chance	< 85 F	85 to 95 F	> 95 F
LAL	> 49 %	15 to 49 %	< 15 %
Ridge Wind	< 5	5	> 5
*Wind Direction	< 15 mph	15 to 24 mph	> 24 mph
Min Humidity	Criticality of wind direction highly dependent on burn operations and/or structures threatened	11 to 20 %	< 10 %
Haines Index	> 20 %	5	6
	< 4	5	6

Five or more EXTREME blocks in a day equals the potential for a Critical Weather Day

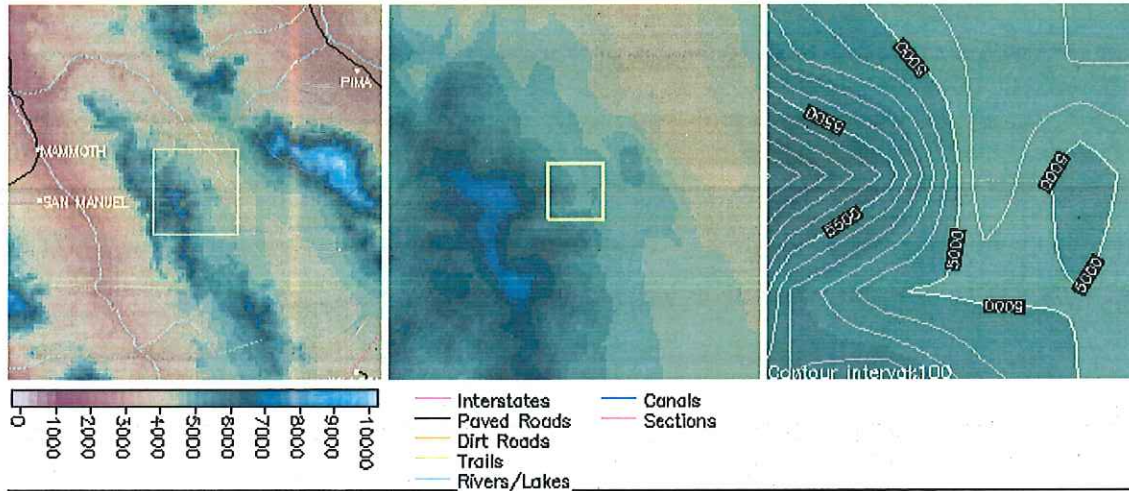
This forecast matrix was developed for the Oak Wildfire and uses criteria specific for this incident. Every incident will respond to conditions differently and adjustments to the formulas and or categories used may be needed.

***Adapted from Halstead, ID Fire

OAK (WILDFIRE) (Requested: 1659 MST 6/28/14)

Forecast complete at 1737 MST 6/28/14

Requested by: CNF



Location: Legal: Lat/Lon:32 37.931/110 14.657 Quad:KENNEDY PEAK

Calculated:(32°37'55"N 110°14'39"W) (EUREKA RANCH AZ)

Elevation:4500-5325 Drainage:unknown Aspect:FLAT Size:8000

Fuel Type:BRUSH/TIMBER (Partially Sheltered)

Observations:

Place	Elev	Time	Wind	Temp	Wetbulb	RH	Dewpt	Remarks
NE FLANK 4949	1100	S 3-5	90	60	17	39	CLEAR	
				Calculated: 19		42		
NE FLANK 4949	1300	S 1-3	96	63	16	42	CLEAR	
				Calculated: 18		45		
NE FLANK 4949	1600	W 2-4	97	62	13	39	CLEAR	
				Calculated: 15		42		

Requested Parameters

Remarks

XXX Clouds / Weather
 XXX Temperature
 XXX Relative Humidity
 XXX 20 foot Wind
 XXX LAL
 XXX Chance of Wetting Rain
 XXX Haines Index

PLEASE HAVE SPOT WX PREPARED BY
 1900 TODAY.
 THANKS, JESSICA

FORECAST:

IF CONDITIONS BECOME UNREPRESENTATIVE,
 CONTACT THE NATIONAL WEATHER SERVICE.

SPOT FORECAST FOR OAK...CNF
 NATIONAL WEATHER SERVICE TUCSON AZ
 537 PM MST SAT JUN 28 2014

FORECAST IS BASED ON REQUEST TIME OF 1659 MST ON JUNE 28.
 IF CONDITIONS BECOME UNREPRESENTATIVE, CONTACT THE NATIONAL WEATHER
 SERVICE.

IN AN EFFORT TO PROVIDE THE BEST SERVICE WE CAN, IF TIME PERMITS
 PLEASE USE THE FEEDBACK OPTION TO SEND BACK THE WEATHER THAT
 OCCURRED DURING THE FORECAST PERIOD YOU REQUESTED. AN EXAMPLE, THE
 HIGH TEMP, MIN RH AND WIND SPEED FOR THE DAY OR THE WEATHER THAT WAS
 OCCURRING DURING YOUR PRESCRIBED BURN.

.DISCUSSION...BREEZES WITH A FEW GUSTS WILL PERSIST INTO EARLY THIS EVENING BEFORE BECOMING LIGHT OVERNIGHT. EXPECT WARM AND DRY CONDITIONS SUNDAY AND INTO THE EARLY PART OF THE UPCOMING WEEK WITH AFTERNOON BREEZES AND GUSTS DUE TO STRONG DAYTIME HEATING. THE WEATHER PATTERN WILL START TO CHANGE THE SECOND HALF OF THE WEEK...AS EARLY AS WEDNESDAY BUT EVEN MORE-SO TO END THE WEEK AS MOISTURE MOVES INTO THE REGION. THIS WILL RESULT IN INCREASING CHANCES OF AFTERNOON AND EVENING SHOWERS AND THUNDERSTORMS ALONG WITH ELEVATED RELATIVE HUMIDITY.

.SUNDAY...

SKY/WEATHER.....MOSTLY SUNNY.
 MAX TEMPERATURE.....96 TO 100 DEGS.
 MIN HUMIDITY.....10 TO 13 PCT.
 20-FOOT WINDS.....UPSLOPE 2 TO 5 MPH IN THE MORNING...BECOMING NORTHWEST 9 TO 14 MPH WITH GUSTS UP TO 25 MPH IN THE AFTERNOON.
 LAL.....1.
 CHANCE OF RAIN.....0 PERCENT.
 HAINES INDEX.....5 MODERATE.

.MONDAY NIGHT...

SKY/WEATHER.....MOSTLY CLEAR.
 MIN TEMPERATURE.....AROUND 70 DEGS.
 MAX HUMIDITY.....27 TO 30 PCT.
 20-FOOT WINDS.....WEST 9 TO 14 MPH WITH GUSTS UP TO 25 MPH IN THE EARLY EVENING...THEN BECOMING DOWNSLOPE 2 TO 5 MPH.
 LAL.....1.
 CHANCE OF RAIN.....0 PERCENT.
 HAINES INDEX.....5 MODERATE.

.TUESDAY...


SKY/WEATHER.....MOSTLY SUNNY THEN BECOMING PARTLY CLOUDY.
 MAX TEMPERATURE.....AROUND 100 DEGS.
 MIN HUMIDITY.....8 TO 11 PCT.
 20-FOOT WINDS.....UPSLOPE 2 TO 5 MPH IN THE MORNING BECOMING WEST 9 TO 14 MPH WITH GUSTS UP TO 25 MPH IN THE AFTERNOON.
 LAL.....1.
 CHANCE OF RAIN.....10 PERCENT.
 HAINES INDEX.....5 MODERATE.

Please provide feedback:

[Printer Friendly Version of Forecast](#)

[Back to Spot List](#) [Copy Info to New Spot Request](#)

FIRE BEHAVIOR FORECAST

FORECAST NUMBER: 2	TYPE OF FIRE: Wildfire
FIRE NAME: Oak	OPERATIONAL PERIOD: Day 6/29/2014
DATE ISSUED: 6/28/2014	TIME ISSUED: 2000
UNIT: Coronado Nat'l Forest, Safford RD	SIGNED: 
	Typed/printed: Ryan Whiteaker, FBAN

INPUTS

WEATHER SUMMARY:

Temp: 96-100, RH: 10-13%; Winds: West 9-14 mph with gusts up to 25 mph. **Haines of 5**, Moderate.

OUTPUTS

FIRE BEHAVIOR

GENERAL: The fire will continue to show similar fire activity as the last few days. This will include backing down slopes and then some upslope runs. Some of this activity will be intense for short periods/runs. Over the duration of the fire days with Haines Indices of have proven to be active, today is a Haines of 5. Fuels are very dry in the area very receptive to ignition. The fuel moisture readings are: 1000 hrs are 3% at noon creek and 7% in Shake Trail. The 100 hour fuel moistures in the same sample sites are in the very low single digits. Live fuel moistures are 87% in the Manzanita, 92% in the Juniper, 93% in the Emery Oak and 88% in the AZ White Oak. The burning period tends to be 0900 to 2000- 2200 at most elevations although it has started as early as 0700 and go well into the night.

ROS: 40-50 ch/hr. FL: brush 5-10 feet. Higher with alignment.
PIG:90%

SPECIFIC:

Div U: The fire will continue to back its way down towards Rattlesnake Canyon. It was hung up on some of the benches yesterday but had some drainages that it could easily back down. If it gets down into the bottom of Rattlesnake it has plenty of potential to continue to move to the west and threaten the cabins in the bottom of the canyon.

Div T: The fire will continue to back down some of the east facing slopes up high and make some short uphill runs. Most of this will be up high on the slopes. This portion of the fire has been the earliest piece to show fire activity due to the sun hitting those slopes and warming them first.

Div V: Backing fire with the upslope runs will be the activity here today. Once the fire backs down and lines up with wind and slope there will be short runs. This could be intense for a short duration.

AIR OPERATIONS: Should be available and no limitations are expected today.

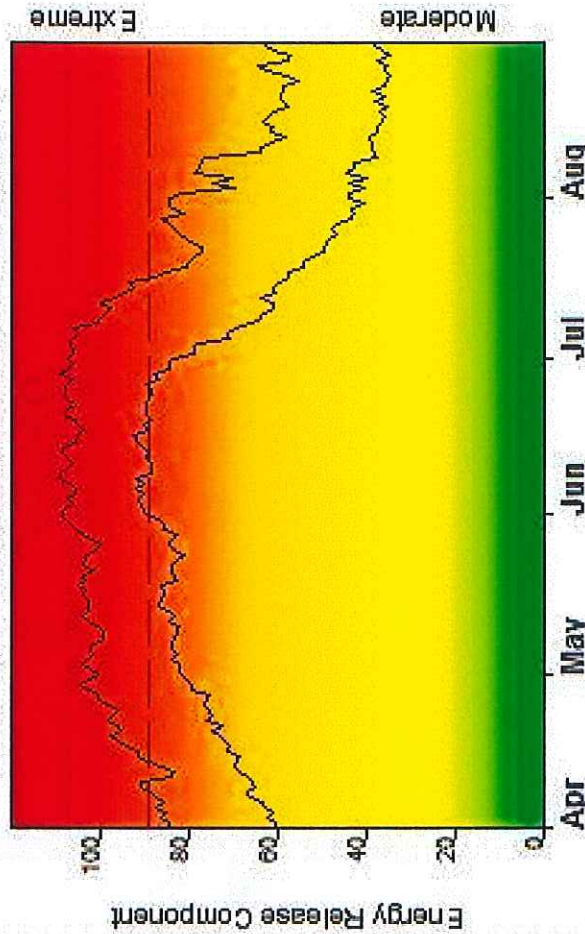
SAFETY.

Fuels are dry and the moderate Haines indices is lining up for some active fire behavior again this afternoon. Pay close attention for the potential for rollout and upslope runs along the edge of the fire..

"Your guess is as good as his...on second thought no its not. "
The Most Interesting Man in the World

FIRE DANGER -- AZ - Southeast Zone

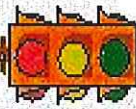
Maximum, Average, and 75th Percentile, based on 23 years data



Fire Danger Area:

- ◆ Basin & Range High FDRA
- ◆ Fire Wx Zones: 151, 152
- ◆ B&R High Elevation SIG
 - Meets NWCG Wx Station Standards

Fire Danger Interpretation:



- EXTREME** — Use extreme caution
- (Caution)** — Watch for change
- Moderate** — Lower Potential, but always be aware

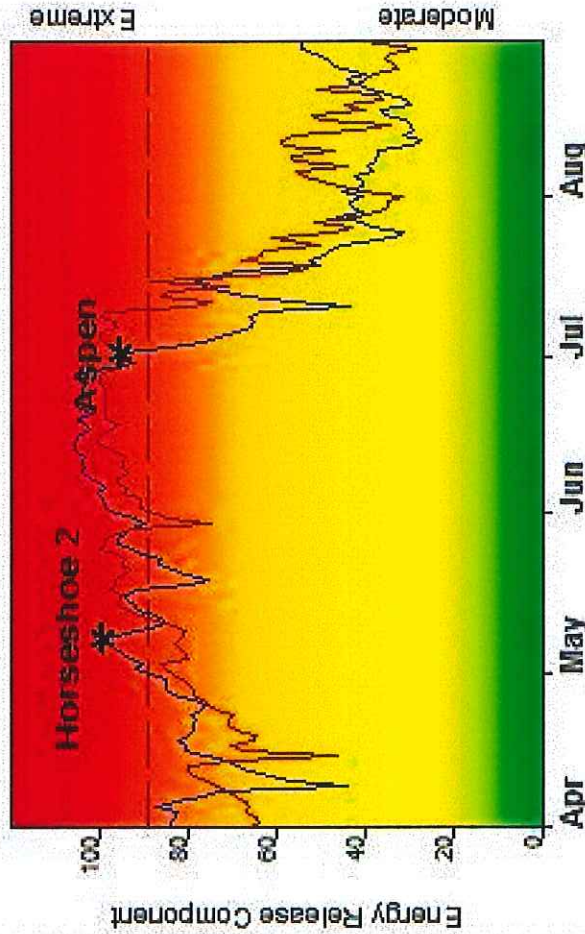
Maximum — Highest Energy Release Component by day for 1991 - 2013

Average — shows peak fire season over 23 years (3519 observations)
 75th Percentile — Only 25% of the 3519 days from 1991 - 2013 had an Energy Release Component above 88

Local Thresholds — Watch out:

- Combinations of any of these factors can greatly increase fire behavior:
- 20' Wind Speed over 10 mph, RH less than 15%,
- Temperature over 80, Energy Release Component over 92

Years to Remember: 2011 2003



Fuel Model: G - Short-Needle (Heavy Dead)

Remember what Fire Danger tells you:

- ✓ Energy Release Component gives seasonal trends calculated from 2 pm temperature, humidity, daily temperature & rh ranges, and precip duration.
- ✓ Wind is NOT part of ERC calculation.
- ✓ Watch local conditions and variations across the landscape — Fuel, Weather, Topography.
- ✓ Listen to weather forecasts — especially WIND.

Past Experience:

Historically, fire activity within the FDRA tends to increase when ERC values rise above 92 (75th percentile) especially in combination with the other local thresholds noted above. Fires spread rapidly and short distance spotting is common. High intensity burning may develop on slopes or in concentrations of fine fuels. Be prepared to adjust tactics based on current and expected fire behavior. A high level of situational awareness regarding fuels and fire behavior needs to be maintained by all personnel at all times.

- > Aspen Fire (06/17/03): 82,440 ac; ERC: 98; Min RH: 11%
- > Horseshoe 2 Fire: (05/08/11): 222,954 ac; ERC: 97; Min RH: 4%

Responsible Agency: AZ Southeast Zone TIFC, Mark Pater

FF+4.1 build 1415 06/28/2014-15:41 [...]\SEZ_1991-2013_FFDatabase_2014_DataMonitor...

Design by NWCG Fire Danger Working Team

Incident: Oak Fire	Date: June 29, 2014	Day/Night Shift
------------------------------	-------------------------------	------------------------



Health and Safety Message

It's better well done, than well said.



Communication:

Establish and test the communication system, including Tac, Command, and Air/Ground channels, before you need them. There will be dead spots caused by elevation and topographical features, so use human repeaters if necessary. Cell phone coverage may be poor, spotty or non-existent.

Accident/Injury Procedures:

In your daily safety sessions, practice "What If" scenarios about how you would medevac a serious injury from your location. Review pages 108 & 109 in your IRPG and section 8 of the Medical Plan.

Dehydration:

Hydrate, Hydrate, Hydrate. Daytime temperatures will be in 90 to 100 degree range and dehydration is a high risk factor. Drink plenty before, during and after your shift. The recommended mix is 3:1 (water to sports drink). Review IRPG pg. 45 on heat-related injuries. Remember, a firefighter most likely will not recognize they are in distress so keep an eye on each other – that's the essence of teamwork.

Driving:

Drive defensively with seat belts and lights on. Roads can be steep, rocky and rough on tires, so slow down. If you have doubts about a section of road, check it out and/or try a different route.

Terrain / Foot Travel:

These steep, rocky mountains have layers of loose rock and dirt. Maintain your work spacing. Take your time, watch your footing, pick your travel routes carefully and travel slowly. Be especially careful when working on night shifts!

Snakes:

We got 'em - so watch where you step, sleep, sit, etc. Use flashlights at night.

Safety Officers: John McGee, Steve Hensel, Damon McRae

MEDICAL PLAN	1. Incident Name	2. Date Prepared	3. Time Prepared	4. Operational Period				
	OAK FIRE	6/27/14	0900	ALL				
5. Incident Medical Aid Station								
Medical Aid Stations		Location			Paramedics			
					Yes	No		
Medic John Conger		ICP/ Div T / Div V			X			
EMTB Andres Egurolla		Div U				X		
6. Transportation								
A. Ambulance Services								
Name		Address		Phone		Paramedics		
						Yes	No	
Southwest		209 9 th St. Safford, AZ		(928) 348-9896		X		
B. Air Ambulances								
Name		Location			Paramedics			
					Yes	No		
Ranger 54		Willcox Airport		(520) 746-4609		X		
Air Evac		Safford		(800)642-7828		X		
Life Net		Willcox		Thru Dispatch		X		
7. Hospitals								
Name	Address	Travel Time		Phone	Helipad		Burn Center	
		Air	Ground		Yes	No	Yes	No
Mount Graham Regional Hosp	1600 S, 20 th Ave Safford, AZ	15-30 Min	1-2 hour	(928) 348-4000	X			X
TMC	5301 E, Grant Rd. Tucson, AZ	45 Min	3-4 hour	(520)873-3000	X			X
Northern Cochise Hospital	Willcox, AZ	30 Min	1.5 hour	(520) 384-3541	X			X
St, Joseph's Hospital	350 N. Wilmot Tucson, AZ	45 Min	3-4 hour	(520)873-3000	X			X
UAMC	1501 N. Campbell Tucson, AZ	50 Min	4-5 hour	(800) 524-4784	X		X	
8. Medical Emergency Procedures								
<p>In the event of a medical emergency the On-scene IC will provide the following information to Dispatch:</p> <ol style="list-style-type: none"> 1. Declare the nature of the emergency. <ol style="list-style-type: none"> a. Medical injury/illness? If injury or illness is Life threatening? (Medical transport vs. Medical Emergency). 2. If Life threatening, request that the designated frequency be cleared for Emergency traffic. 3. Identify an On-scene Incident Commander by Last Name (i.e. Jones). 4. Identify nature of the incident, number of injured, patient assessment(s), and location (geographic and GPS) 5. identify On-scene medical personnel (i.e. Smith). 6. Identify preferred method of patient transportation from scene. 7. Request any additional resources and/or equipment needed. 8. Document all information received and transmitted on the phone and radio. 9. Identify any changes in the On-scene IC or Medical personnel as they occur. <u>REFER TO IRPG PG. 108-109</u> 								
Prepared by (Medical Unit Leader)				10. Reviewed by (Safety Officer)				
John Conger CEP (EMPF)				Mike Cachero SOF2 (t)				

AIR OPERATIONS SUMMARY

PREPARED BY: Don Clark

PREPARED DATE/TIME: 06/27/2014 14:30

1. INCIDENT NAME: Oak Fire
 2. OPERATIONAL PERIOD DATE: 6/27/14 START TIME: 08:00 END TIME: 19:00
 Oak Helibase - SUNRISE: 05:19 SUNSET: 19:30 Cutoff: 20:00

3. REMARKS (Safety Notes, Hazards, Air Operations Special Equipment, etc.): High Density Altitude, Dust, Smoke.
 Ranger 54 is available for 24 Hour Medivac Support. NO night Short Haul.
 Contact through Air Attack/OPS/DIVS . Place Phone Order through DPS Dispatch, (520)-746-4609
 The following Water Tenders are assigned to Air Operations: E-6(T-3), E-11(T-3), E-16(T-2), E-19(T-3), E-20(T-3), E-21(T-3), E-17(T2), E-22 (T2).
 Horse Peak Repeater
 N32 46.611
 W110 21.926 Elevation 6100

4. MEDEVAC A/C:
 Ranger 54
 *24 Hr. Availability
 *Short Haul, Toe In, Rappel, Hover

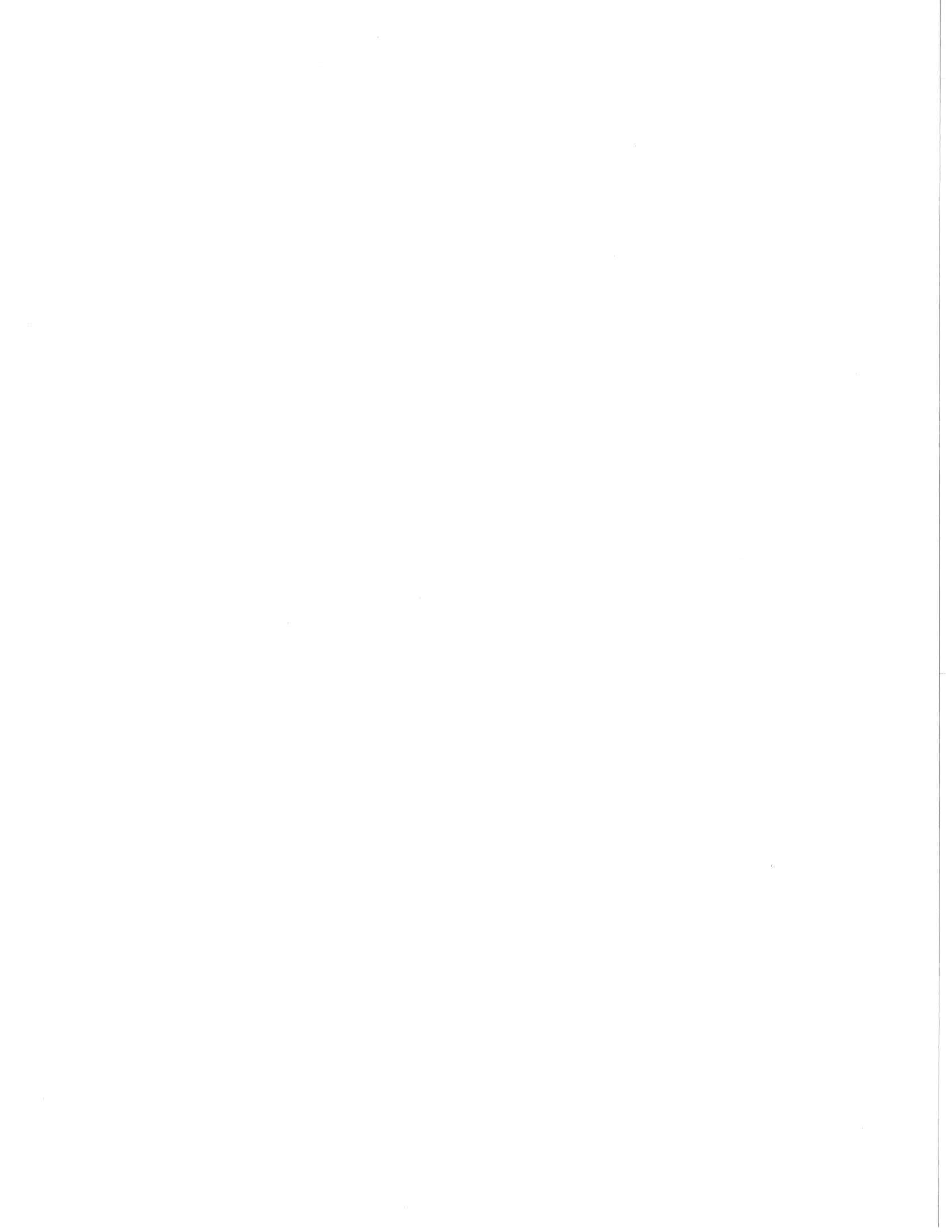
5. TFR: 4/4785
 Radius: 5 NM
 Altitude: 10,000 = MSL
 Center point: Lat: 32*38.97
 Long: 110*19.34

6. PERSONNEL	Phone	7. FREQUENCIES	AM	FM	8. FIXED-WING	# Avail / Type/ Make-Model / FAA N# / Base(s)
AOBD: Don Clark	(928)245-2539	AIR/AIR FW:	123.125		Airtankers Water / Retardant	Wilcox/Safford/Libby/Gateway
ATGS: Ed Encinas	520.954.2358	AIR/AIR RW:	123.125		Leadplanes	TBA
ATGS: Steve Price	208.871.7521	AIR/GROUND:		168.6625		
ASGS:		COMMAND:	Orange Rpt Tone (2) 123.0			
Oak Helibase: Ted Risch	520.975.1294	COMMAND RPT OAK RPT.	Rx:167.1000 Tx: 169.7500 Tx Tone: 162.2		ATGS Aircraft	Air Attack over Fire at 0900
ATB MGR:		DECK FREQ:		163.1000		
		TOLC FREQ:			Other	

9. HELICOPTERS (Use Additional Sheets As Necessary)

FAA N#	TY	MAKE/MODEL	BASE	AVAIL	START	REMARKS	FAA N#	TY	MAKE/MODEL	BASE	AVAIL	START	REMARKS
1HQ	3	Astar		0730	0800	Logistical/Tactical Support							
73H	2	Bell 205 ++		0730	0800	Logistical/Tactical Support							
1SC	2	Bell 212 HP		0730	0800	Logistical/Tactical Support							
2TA	3	Astar		0730	0800	PSD/Logistical/Tactical							
RANGER 54	3	Bell 407		24 HRS		MEDEVAC/RESCUE							

INCIDENT RADIO COMMUNICATIONS PLAN ICS 205 (9/96)		1. INCIDENT NAME	2. DATE/TIME PREPARED	3. OPERATIONAL PERIOD DATE/TIME		
		Oak	1930	6/29/2014		
4. BASIC RADIO CHANNEL UTILIZATION						
SYSTEM/ CACHE	GE CHANNEL	KING CHANNEL	FUNCTION	FREQUENCY	ASSIGNMENT	REMARKS
		1		RX 169.6000 TX 169.6000 TX Tone 100.0	Admin Simplex	1 West Peak 2 Mule 3 Atascosa/Antelope
		2		RX 169.6000 TX 170.5250 TX Tone 103.5	Admin RPT	4 Bigelow 5 Hopkins 6 Heliograph
		3		RX 168.1500 TX 168.1500 TX Tone 107.2	Fire Simplex	7 Red Mountain 8 Mt. Lemmon 9 Monte Vista
		4		RX 168.1500 TX 172.2750 TX Tone 110.9	Fire RPT	10 Mobile Rpt 1 11 Mobile Rpt 2
		5		RX 151.4000 TX 159.4050 TX Tone 114.8	AZ STATE Fire	<u>Incident Repeaters, You</u>
		6		RX 154.2800 TX 154.2800 TX Tone 118.8	Mutual Aid	*Note
		7		RX 173.8250 TX 166.3125 TX Tone 123.0	BLM Rpt	Press zero (0) on the keypad to hit fire simplex.
		8		RX 163.7125 TX 163.7125 TX Tone 127.3	Common	
		9	DIV U	RX 168.050 TX 168.050 TX Tone 131.8	Oak TAC 1	
	-	10	DIV T and Night Ops	RX 168.200 TX 168.200 TX Tone 141.3	Oak TAC 2	
	-	11	DIV V	RX 168.600 TX 168.600 TX Tone 156.7	Oak TAC 3	
	-	12		RX 167.1000 TX 169.7500 TX Tone 162.2	Oak RPT	
	-	13		RX 168.6625 TX 168.6625	A/G56	
		14		RX 166.9625 TX 166.9625	A/G 32	
		15		RX 170.6875 TX 166.5750 TX Tone 162.2	Horse Rpt	
		16		RX 155.0550 TX 153.7850 TX Tone 167.9	GCSO	
ICS 05 9/96		5. PREPARED BY (COMMUNICATIONS UNIT)				



UNIT LOG		1. Incident Name	2. Date Prepared	3. Time Prepared
4. Unit Name/Designators		5. Unit Leader (Name and Position)		6. Operational Period
7. Personnel Roster Assigned				
Name		ICS Position		Home Base
8. Activity Log				
Time		Major Events		
9. Prepared by (Name and Position)				