

# Oak Fire

AZ-CNF-00067/P3H56L (0305)



*Ellis Ball Mill near Gold Mountain.*

Incident Action Plan

Day Operational Period

June 30, 2014

<b>INCIDENT OBJECTIVES</b>	1. Incident Name <b>Oak</b>	2. Date <b>06/29/2014</b>	3. Time <b>1600</b>
----------------------------	--------------------------------	------------------------------	------------------------

4. Operational Period  
**06/30/2014 DAY 0630-2000**

5. General Control Objectives for the Incident (include alternatives)
1. Provide for firefighter, aviation, and public safety.
  2. Try to contain fire activity within the Coronado National Forest Boundary.
  3. Manage this natural ignition fire to improve wildlife habitat and forage; improve rangeland conditions; watershed conditions; improve forest health.
  4. Minimize fire severity impacts to T&E habitat (i.e. Chiricahua Leopard Frog, Mexican spotted owl). Try to maintain buffer zones to trap sediment.
  5. Utilize Minimum Impact Suppression Tactics (MIST) when conducting fire management operations in the Wilderness.

6. Weather Forecast for Period

See attached Weather Forecast

7. General Safety Message

Driving on Forest Roads takes your full attention!

8. Attachments (mark if attached)

X	Organization List - ICS 203		Incident within Incident		
X	Div. Assignment Lists - ICS 204	X	Air Operations -ICS 220		
X	Communications Plan - ICS 205	X	Safety message		
X	Medical Plan - ICS 206			X	Unit Log-ICS 214

9. Prepared by (Planning Section Chief) <b>Doug Hardy</b>	10. Approved by (Incident Commander) <b>Scott Glasple ICT3</b>
--	---

ORGANIZATION ASSIGNMENT LIST		
1. Incident Name		
<b>Oak</b>		
2. Date		3. Time
06/29/2014		1500
4. Operational Period		
06/30/2014 Day 0630-2000		
Position	Name	
5. Incident Commander and Staff		
Incident Commander	Scott Gaspie	
Incident Commander (I)		
Safety Officer	John McGee 7/8	
Safety Officer		
Information Officer	Anna Iwaki	
Information Officer	Heidi Schewell /Brenda Jensen	
6. Agency Representative		
Agency Rep	Kent Ellett	
Resource Advisors	Anne Casey James Heitholt	
State of Arizona		
Graham County		
7. Planning Section		
Plan Section Chief	Doug Hardy	
Resources Unit	Jay Yancick	
SOPL	Justin Kaber	
Fire Behavior Analyst	Ryan Whiteaker	
LTAN (I)	Tara Umphries	
Status Check-in		
Computer Tech		
GIS Specialist	Devin Quintana	
8. Logistics Section		
Chief	Dean McAllister	
Chief (I)	Brian Hicks	
Facilities Unit		
Ground Support		
Purchasing		
Communications Unit		
Medical Unit	John Conger	
Food Unit Leader		
Base Camp Manager		
Base Camp Manager		

9. Operations Section		
Chief	Mike Cachero (day)	
Planning Ops	Roy Hall	
a. Division/Groups		
Branch Director		
Deputy		
Division/Group	T	Larry Bear 7/8
Division/Group		
Division/Group	U	Darrell Miller 7/8
Division/Group	V	Gary Cordes
Structure Group		
Division/Group		
b. Division/Groups		
Division/ Group		
Division/Group		
Division/Group		
Division/Group		
c.		
Branch Director		
Division/Group		
Division/Group		
Division/Group		
d.		
Division/Group		
Division/Group		
Division/Group		
d. Air Operations Branch		
Air Operations Branch Director	Don Clark	
Air Support Group Supervisor		
Air Tactical Group Supervisor		
Helibase Manager	Ted Risch	
Helicopter Ignitions Manager		
Helicopter Manager		
Air Tanker Coordinator		
10. Finance Section		
Time Unit		
Cost Unit	Norene Norris	
Personnel Recorder	Lisa Angle	
Prepared by PSC2		
Douglas Hardy		

<b>DIVISION ASSIGNMENT LIST</b>		1. Branch I		2. Division/Group <b>T</b>			
3. Incident Name <b>Oak</b>		4. Operational Period Date: June 30, 2014      Time: 0630 – 2000 hours					
5. Operations Personnel							
Strategic Operations		Division/Group Supervisor		Larry Bear			7/8
Planning Operations		Air Tactical Group Supervisor					
Line Operations	Mike Cachero	7/10					
6. Resources Assigned this Period							
Strike Team/Task Force/ Resource Designator		Leader		Number Persons	Trans. Needed	Drop Off PT./Time	Pick Up PT./Time
Saguaro WFM		7/2	J. Thivener	9	N	0630	2000
Ironwood IHC		7/7	Brian Robinson	20	N	0630	2000
Palomar IHC		7/3	Hill	20	N	0630	2000
T3 ENG Caminos		7/8	J. Roads	3	N	0630	2000
T6 E-533		7/4	Gustafson	6	N	0630	2000
T6 E-542		6/30	J. Nicholas	3	N	0630	2000
TFLD		7/6	Darrel Howell	1		0630	2000
EMT-P (Tubac)		7/6	J. Conger	1	N	0630	2000
SOF2		7-9	Steve Hensel	1	N	0630	2000
7. Control Operations							
Continue to patrol and hold division.							
Look for opportunities reduce fire effects to meet resource objectives.							
Find opportunities to build check lines where feasible.							
Hold and secure check line above Deer Creek Ranch.							
8. Special Instructions:							
9. Division/Group Communication Summary							
Function	Frequency	System	Channel	Function	Frequency	System	Channel
Command		King	12	Logistics			
Tactical Div/Group	Tac 2	King	10	Air to Ground	See Comm Plan		
Prepared by (Resource Unit Leader) D Hardy		Approved by (Planning Section Chief) Doug Hardy			Date 6/29/2014		Time 1800

<b>Division Assignment List</b>		1. Branch I		2. Division/Group <b>U</b>			
3. Incident Name <b>Oak</b>		4. Operational Period Date: June 30, 2014      Time: 0630 – 2000 hours					
5. Operations Personnel							
Strategic Operations		Division/Group Supervisor	Darrell Miller				7/8
Planning Operations		Air Tactical Group Supervisor					
Line Operations	Mike Cachero	7/10					
6. Resources Assigned this Period							
Strike Team/Task Force/ Resource Designator		Leader	Number Persons	Trans. Needed	Drop Off PT./Time	Pick Up PT./Time	
Crew 4 (Safford)	7/1	J.Zigler / Howler (t)	20	N	0630	2000	
Globe IHC	7/8	Candice Kutrosky	20	N	0630	2000	
Del Rosa IHC	7/1	N. Gamboa	20	N	0630	2000	
T6 E-4664	7/9	D. Roper	3	N	0630	2000	
T6 E-541	7/1	Ostler	3	N	0630	2000	
SOF2	7/8	D. McRea	1	N	0630	2000	
EMTB		A. Egurola	1	N	0630	2000	
Wilderness READ		Greg Sasek	1	N	0630	2000	
READ		James Heitholt	1	N	0630	2000	
7. Control Operations Conduct operations in support of suppression as directed. Burnout where feasible to reduce fire effects to meet objectives. Continue to assess holding opportunities within the Division. Continue structure protection at Powers Garden and for other structures to the South. Scout access and control opportunities North towards Peach Tree Tank area.							
8. Special Instructions: Coordinate action with READ Heitholt							
9. Division/Group Communication Summary							
Function	Frequency	System	Channel	Function	Frequency	System	Channel
Command		King	12	Logistics			
Tactical Div/Group	Tac1	King	9	Air to Ground			
Prepared by (Resource Unit Leader) D Hardy		Approved by (Planning Section Chief) Doug Hardy			Date 6/29/2014		Time 1800



# Oak Incident General Weather Outlook

For Planning Purposes Only, see the IAP for the Official Forecast

Forecast made 29 June/1600 - Fire Weather Forecaster, Tucson NWS Glenn Lader

Day	Mon	Tue	Wed	Thu	Fri	Sat
	30-Jun	1-Jul	2-Jul	3-Jul	4-Jul	5-Jul
Clouds @ 1500 (%)	15	35	50	50	60	60
Avg. Max Temp (F)	99	99	99	98	96	96
Precip Chance (%)	0	10	20	35	40	35
LAL	1	2	3	3	3	3
Ridge Wind (mph)	15	15	10	10	7	10
Wind Direction*	NW	NW	NW	SE	SE	W
Min Humidity (%)	13	11	14	16	18	17
Haines Index	4	4	5	5	4	4

KEY:	Moderate Burning Conditions	Take Caution - Critical Burning Conditions	Extreme Burning Conditions
Clouds	> 25 %	15 to 24 %	< 15 %
Avg Max Temp	< 85 F	85 to 95 F	> 95 F
Precip Chance	> 49 %	15 to 49 %	< 15 %
LAL	< 5	5	> 5
Ridge Wind	< 15 mph	15 to 24 mph	> 24 mph
*Wind Direction	Criticality of wind direction highly dependent on burn operations and/or structures threatened		
Min Humidity	> 20 %	11 to 20 %	< 10 %
Haines Index	< 4	5	6

Five or more EXTREME blocks in a day equals the potential for a Critical Weather Day

This forecast matrix was developed for the Oak Wildfire and uses criteria specific for this incident. Every incident will respond to conditions differently and adjustments to the formulas and or categories used may be needed.

\*\*\*Adapted from Halstead, ID Fire

DISCUSSION...ANY REMAINING BREEZES WILL QUICKLY TAPER OFF AFTER SUNSET WITH LIGHT TERRAIN DRIVEN WINDS TONIGHT INTO MONDAY MORNING. EXPECT DRY AND HOT CONDITIONS AT THE FIRE SITE MONDAY WITH SOME AFTERNOON GUSTS DUE TO STRONG DAYTIME HEATING. THE WEATHER PATTERN WILL START TO CHANGE AS EARLY AS TUESDAY WHEN MOISTURE STARTS TO BUILD INTO THE AREA. THIS WILL RESULT IN A SLIGHT CHANCE OF AFTERNOON AND EVENING SHOWERS AND THUNDERSTORMS. ADDITIONAL MOISTURE WILL CONTINUE TO WORK IN FOR THE REMAINDER OF THE WEEK WITH INCREASED CHANCES OF AFTERNOON AND EVENING SHOWERS AND THUNDERSTORMS THE SECOND HALF OF THE WEEK. GUSTY AND ERRATIC WINDS ARE EXPECTED IN AND NEAR ANY THUNDERSTORMS.

.MONDAY...

SKY/WEATHER.....MOSTLY SUNNY.  
MAX TEMPERATURE.....98 TO 102 DEGS.  
MIN HUMIDITY.....9 TO 12 PCT.  
20-FOOT WINDS.....UPSLOPE 2 TO 5 MPH SHIFTING TO THE WEST 5 TO  
10 MPH IN THE AFTERNOON WITH GUSTS UP TO 20 MPH.  
LAL.....1.  
CHANCE OF RAIN.....0 PERCENT.  
HAINES INDEX.....4 LOW.

.MONDAY NIGHT...

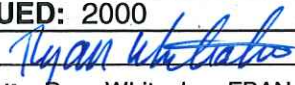
SKY/WEATHER.....MOSTLY CLEAR.  
MIN TEMPERATURE.....AROUND 70 DEGS.  
MAX HUMIDITY.....30 TO 33 PCT.  
20-FOOT WINDS.....WEST 5 TO 10 MPH WITH GUSTS UP TO 20 MPH IN THE  
EARLY EVENING BECOMING DOWNSLOPE 2 TO 5 MPH.  
LAL.....1.  
CHANCE OF RAIN.....0 PERCENT.  
HAINES INDEX.....5 MODERATE.

.TUESDAY...

SKY/WEATHER.....MOSTLY SUNNY THEN BECOMING PARTLY CLOUDY WITH  
A SLIGHT CHANCE OF SHOWERS AND THUNDERSTORMS IN  
THE AFTERNOON.  
MAX TEMPERATURE.....99 TO 102 DEGS.  
MIN HUMIDITY.....8 TO 11 PCT.  
20-FOOT WINDS.....UPSLOPE 2 TO 5 MPH SHIFTING TO THE WEST 6 TO  
11 MPH IN THE AFTERNOON WITH GUSTS UP TO 20 MPH.  
GUSTY AND ERRATIC WINDS NEAR ANY SHOWERS AND  
THUNDERSTORMS.  
LAL.....1 UNTIL 1200...THEN 2.  
CHANCE OF RAIN.....10 PERCENT.  
HAINES INDEX.....5 MODERATE.



# FIRE BEHAVIOR FORECAST

<b>FORECAST NUMBER:</b> 3	<b>TYPE OF FIRE:</b> Wildfire
<b>FIRE NAME:</b> Oak	<b>OPERATIONAL PERIOD:</b> Day 6/30/2014
<b>DATE ISSUED:</b> 6/29/2014	<b>TIME ISSUED:</b> 2000
<b>UNIT:</b> Coronado Nat'l Forest, Safford RD	<b>SIGNED:</b> 
	<b>Typed/printed:</b> Ryan Whiteaker, FBAN

## INPUTS

### WEATHER SUMMARY:

Temp: 98-100, RH: 9-12%; Winds: West 5-10 mph with gusts up to 20 mph. Haines of 4, Low.

## OUTPUTS

### FIRE BEHAVIOR

**GENERAL:** The fire will continue to show similar fire activity as the last few days. This will include backing down slopes and then some upslope runs. Some of this activity will be intense for short periods/runs. Over the duration of the fire days with Haines Indices of have proven to be active, today is a Haines of 5. Fuels are very dry in the area and very receptive to ignition. The fire behavior has been pretty active with alignment. Yesterday the fire produced a pretty good column in Coral and Brush canyons as the fire aligned with slope and wind.

The fuel moisture readings are: 1000 hrs are 3% at noon creek and 7% in Shake Trail. The 100 hour fuel moistures in the same sample sites are in the very low single digits. Live fuel moistures are 87% in the Manzanita, 92% in the Juniper, 93% in the Emery Oak and 88% in the AZ White Oak. The burning period tends to be 0900 to 2000- 2200 at most elevations although it has started as early as 0700 and go well into the night.

ROS: 40-50 ch/hr. FL: brush 5-10 feet. Higher with alignment.  
PIG:90%

### SPECIFIC:

**DIV U:** The fire will continue to back its way down towards Rattlesnake Canyon. It was hung up on some of the benches yesterday but had some drainages that it could easily back down. If it gets down into the bottom of Rattlesnake it has plenty of potential to continue to move to the west and threaten the cabins in the bottom of the canyon. The fire got down into the canyon yesterday afternoon. Be aware that the fire could get seated in the canyon and gain alignment.

**DIV T:** The fire will continue to back down some of the east facing slopes up high and make some short uphill runs. Most of this will be up high on the slopes. This portion of the fire has been the earliest piece to show fire activity due to the sun hitting those slopes and warming them first.

**DIV V:** Backing fire with the upslope runs will be the activity here today. Once the fire backs down and lines up with wind and slope there will be short runs. This could be intense for a short duration.

**AIR OPERATIONS:** There could be a little more cloud build up this afternoon. Turbulence will increase if there is more build up. There should not be much impact to the overall availability to air ops today.

### SAFETY.

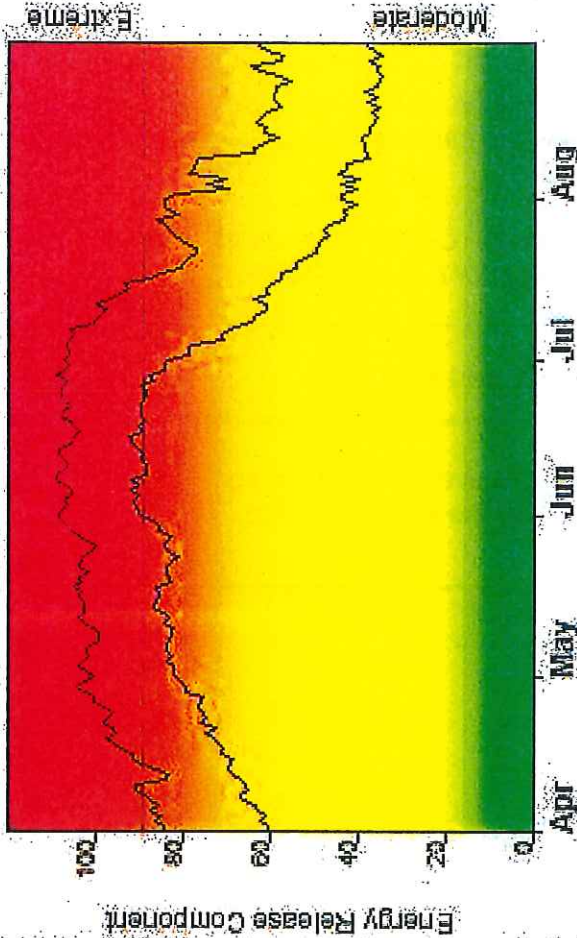
Today is an important day in wildland fire history. Stay focused on the task at hand and the current and expected fire behavior. Ensure your situational awareness is up and pay attention to potential threats. These two go hand in hand. Pay attention to watch out situation 14/15 and the first three standard firefighting orders. If you don't know these please take the time to look them up.

In Memory of Granite Mountain Hotshots

"When he whispers to horses. They whisper back."  
The Most Interesting Man in the World

## FIRE DANGER -- AZ - Southeast Zone

Maximum, Average, and 75th Percentile, based on 23 years data



## Fire Danger Area:

- ◆ Basin & Range High FDRA
- ◆ Fire Wx Zones: 151, 152
- ◆ B&R High Elevation SIG
  - ~ Meets NWCG Wx Station Standards

## Fire Danger Interpretation:



- EXTREME** — Use extreme caution
- Cautious** — Watch for change
- Moderate** — Lower Potential, but always be aware

**Maximum** — Highest Energy Release Component by day for 1991 - 2013

**Average** — shows peak fire season over 23 years (3519 observations)

**75th Percentile** — Only 25% of the 3519 days from 1991 - 2013 had an Energy Release Component above 88

## Local Thresholds - Watch out: Combinations

- of any of these factors can greatly increase fire behavior:
- 20' Wind Speed over 10 mph, RH less than 15%,
- Temperature over 80, Energy Release Component over 92

## Remember what Fire Danger tells you:

- ✓ Energy Release Component gives seasonal trends calculated from: 2 pm temperature, humidity, daily temperature & rh ranges, and precip duration.
- ✓ Wind is NOT part of ERC calculation.
- ✓ Watch local conditions and variations across the landscape — Fuel, Weather, Topography.
- ✓ Listen to weather forecasts — especially WIND

## Past Experience:

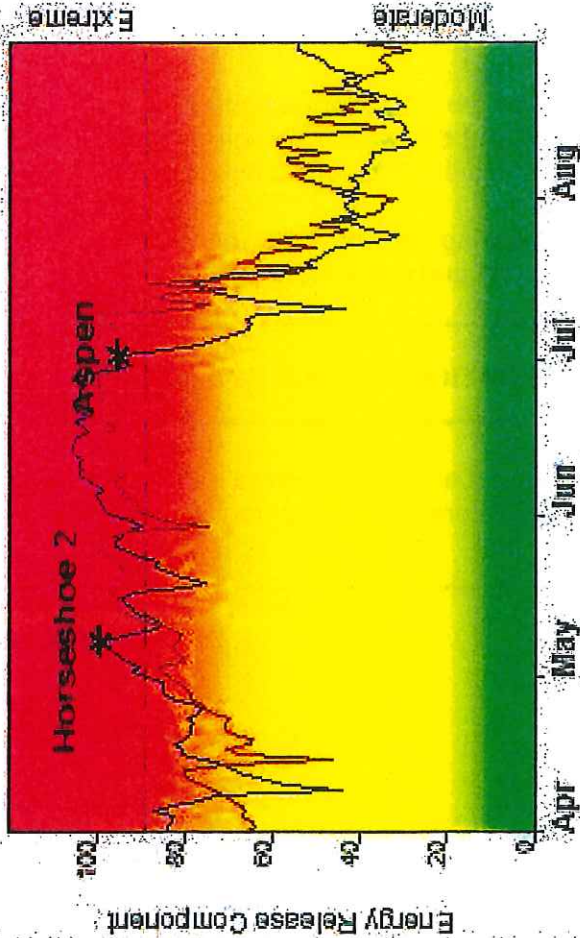
Historically, fire activity within the FDRA tends to increase when ERC values rise above 92 (75th percentile) especially in combination with the other local thresholds noted above. Fires spread rapidly and short distance spotting is common. High intensity burning may develop on slopes or in concentrations of fine fuels. Be prepared to adjust tactics based on current and expected fire behavior. A high level of situational awareness regarding fuels and fire behavior needs to be maintained by all personnel at all times.

- > Aspen Fire (03/17/03): 52,440 ac; ERC: 96; Min RH: 11%
- > Horseshoe 2 Fire: (05/08/11): 222,954 ac; ERC: 97; Min RH: 4%

Responsible Agency: AZ Southeast Zone TIFC, Mark Pater  
 FF-4.1 build 1415 06/28/2014 15:41 (...ISEZ\_1991-2013\_FEPDatabase\_2014\_Data/konito)

Design by NWCG Fire Danger Working Team

## Years to Remember: 2011 2003



## Fuel Model: G - Short-Needle (Heavy Dead)

<b>Incident:</b> Oak Fire	<b>Date:</b> June 29, 2014	<b>Day/Night Shift</b>
------------------------------	-------------------------------	------------------------



## **Health and Safety Message**

*It's better well done, than well said.*



### **Communication:**

Establish and test the communication system, including Tac, Command, and Air/Ground channels, before you need them. There will be dead spots caused by elevation and topographical features, so use human repeaters if necessary. Cell phone coverage may be poor, spotty or non-existent.

### **Accident/Injury Procedures:**

In your daily safety sessions, practice "What If" scenarios about how you would medevac a serious injury from your location. Review pages 108 & 109 in your IRPG and section 8 of the Medical Plan.

### **Dehydration:**

Hydrate, Hydrate, Hydrate. Daytime temperatures will be in 90 to 100 degree range and dehydration is a high risk factor. Drink plenty before, during and after your shift. The recommended mix is 3:1 (water to sports drink). Review IRPG pg. 45 on heat-related injuries. Remember, a firefighter most likely will not recognize they are in distress so keep an eye on each other – that's the essence of teamwork.

### **Driving:**

Drive defensively with seat belts and lights on. Roads can be steep, rocky and rough on tires, so slow down. If you have doubts about a section of road, check it out and/or try a different route.

### **Terrain / Foot Travel:**

These steep, rocky mountains have layers of loose rock and dirt. Maintain your work spacing. Take your time, watch your footing, pick your travel routes carefully and travel slowly. Be especially careful when working on night shifts!

### **Snakes:**

We got 'em - so watch where you step, sleep, sit, etc. Use flashlights at night.

**Safety Officers:** John McGee, Steve Hensel, Damon McRae

<b>MEDICAL PLAN</b>	1. Incident Name OAK FIRE	2. Date Prepared 6/27/14	3. Time Prepared 0900	4. Operational Period ALL	
<b>5. Incident Medical Aid Station</b>					
Medical Aid Stations	Location		Paramedics Yes No		
Medic John Conger	ICP/ Div T / Div V		X		
EMTB Andres Egurolla	Div U			X	
<b>6. Transportation</b>					
<b>A. Ambulance Services</b>					
Name	Address	Phone	Paramedics Yes No		
Southwest	209 9 <sup>th</sup> St. Safford, AZ	(928) 348-9896	X		
<b>B. Air Ambulances</b>					
Name	Location	Phone	Paramedics Yes No		
Ranger 54	Willcox Airport	(520) 746-4609	X		
Air Evac	Safford	(800)642-7828	X		
Life Net	Willcox	Thru Dispatch	X		
<b>7. Hospitals</b>					
Name	Address	Travel Time Air Ground	Phone	Helipad Yes No	Burn Center Yes No
Mount Graham Regional Hosp	1600 S, 20 <sup>th</sup> Ave Safford, AZ	15-30 Min 1-2 hour	(928) 348-4000	X	X
TMC	5301 E, Grant Rd. Tucson, AZ	45 Min 3-4 hour	(520)873-3000	X	X
Northern Cochise Hospital	Willcox, AZ	30 Min 1.5 hour	(520) 384-3541	X	X
St. Joseph's Hospital	350 N. Wilmot Tucson, AZ	45 Min 3-4 hour	(520)873-3000	X	X
UAMC	1501 N. Campbell Tucson, AZ	50 Min 4-5 hour	(800) 524-4784	X	X
<b>8. Medical Emergency Procedures</b>					
<p>In the event of a medical emergency the On-scene IC will provide the following information to Dispatch:</p> <ol style="list-style-type: none"> <li>1. Declare the nature of the emergency. <ol style="list-style-type: none"> <li>a. Medical injury/illness? If injury or illness is Life threatening? (Medical transport vs. Medical Emergency).</li> </ol> </li> <li>2. If Life threatening, request that the designated frequency be cleared for Emergency traffic.</li> <li>3. Identify an On-scene Incident Commander by Last Name (i.e. Jones).</li> <li>4. Identify nature of the incident, number of injured, patient assessment(s), and location (geographic and GPS)</li> <li>5. identify On-scene medical personnel (i.e. Smith).</li> <li>6. Identify preferred method of patient transportation from scene.</li> <li>7. Request any additional resources and/or equipment needed.</li> <li>8. Document all information received and transmitted on the phone and radio.</li> <li>9. Identify any changes in the On-scene IC or Medical personnel as they occur. <b><u>REFER TO IRPG PG. 108-109</u></b></li> </ol>					
Prepared by (Medical Unit Leader) John Conger CEP (EMPF)			10. Reviewed by (Safety Officer) Mike Cachero SOF2 (t)		

# AIR OPERATIONS SUMMARY

PREPARED BY: Don Clark

PREPARED DATE/TIME: 06/29/2014 14:30

<p>1. INCIDENT NAME: Oak Fire</p>	<p>2. OPERATIONAL PERIOD DATE: 6/30/14 START TIME: 08:00 END TIME: 19:00 Oak Helibase - SUNRISE: 05:19 SUNSET: 19:30 Cutoff: 20:00</p>
<p>3. REMARKS (Safety Notes, Hazards, Air Operations Special Equipment, etc.): High Density Altitude, Dust, Smoke. Ranger 54 is available for 24 Hour Medivac Support. NO night Short Haul. Contact through Air Attack/OPS/DIVS . Place Phone Order through DPS Dispatch, (520)-746-4609 The following Water Tenders are assigned to Air Operations: E-6(T-3), E-11(T-3), E-16(T-2), E-19(T-3), E-20(T-3), E-21(T-3), E-17(T2), E-22 (T2). Horse Peak Repeater N32 46.611 W110 21.926 Elevation 6100</p>	<p>4. MEDEVAC A/C: Ranger 54 *24 Hr. Availability *Short Haul, Toe In, Rappel, Hover</p>
<p>5. TFR: 4/4785 Radius: 5 NM Altitude: 10,000 = MSL Center point: Lat: 32°38.97 Long: 110°19.34</p>	

6. PERSONNEL	Phone	7. FREQUENCIES			AM	FM	8. FIXED-WING			# Avail / Type/ Make-Model / FAA N# / Base(s)
		AIR/AIR FW:	AIR/AIR RW:	AIR/GROUND:			Command:	Remarks	Leadplanes	
AODB: Don Clark	(928)245-2539				123.125			Airtankers	Water / Retardant	Wilcox/Safford/Libby/Gateway
ATGS: Ed Encinas	520.954.2358				123.125			Leadplanes		TBA
ATGS: Steve Price	208.871.7521					168.6625				
ASGS:						Orange Rpt Tone (2) 123.0				
Oak Helibase: Ted Risch	520.975.1294					COMMAND RPT OAK RPT.				Air Attack over Fire at 0900
ATB MGR:						DECK FREQ: TOLC FREQ:				
						163.1000				Other

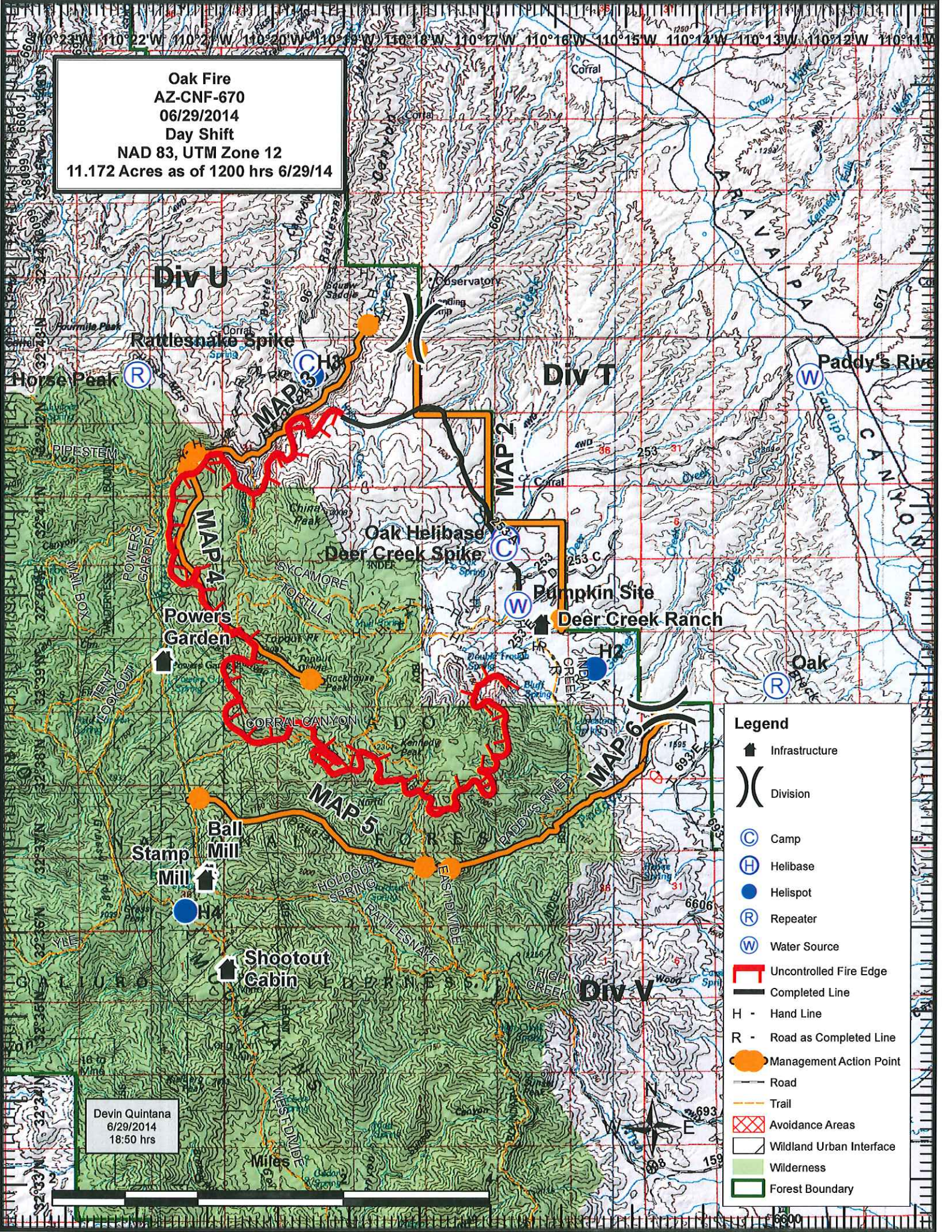
9. HELICOPTERS (Use Additional Sheets As Necessary)

FAA N#	TY	MAKE/MODEL	BASE	AVAIL	START	REMARKS	FAA N#	TY	MAKE/MODEL	BASE	AVAIL	START	REMARKS
1HQ	3	Astar		0730	0800	Logistical/Tactical Support							
73H	2	Bell 205 ++		0730	0800	Logistical/Tactical Support							
1SC	2	Bell 212 HP		0730	0800	Logistical/Tactical Support							
2TA	3	Astar		0730	0800	PSD/Logistical/Tactical							
RANGER 54	3	Bell 407		24 HRS		MEDEVAC/RESCUE							

<b>INCIDENT RADIO COMMUNICATIONS PLAN ICS 205 (9/96)</b>			1. INCIDENT NAME <b>Oak</b>	2. DATE/TIME PREPARED <b>1930</b>	3. OPERATIONAL PERIOD DATE/TIME <b>6/30/2014</b>	
4. BASIC RADIO CHANNEL UTILIZATION						
SYSTEM/ CACHE	GE CHANNEL	KING CHANNEL	FUNCTION	FREQUENCY	ASSIGNMENT	REMARKS
		1		RX 169.6000 TX 169.6000 TX Tone 100.0	Admin Simplex	1 West Peak 2 Mule 3 Atascosa/Antelope
		2		RX 169.6000 TX 170.5250 TX Tone 103.5	Admin RPT	4 Bigelow 5 Hopkins 6 Heliograph
		3		RX 168.1500 TX 168.1500 TX Tone 107.2	Fire Simplex	7 Red Mountain 8 Mt. Lemmon 9 Monte Vista
		4		RX 168.1500 TX 172.2750 TX Tone 110.9	Fire RPT	10 Mobile Rpt 1 11 Mobile Rpt 2
		5		RX 151.4000 TX 159.4050 TX Tone 114.8	AZ STATE Fire	<b><u>Incident Repeaters, You</u></b>
		6		RX 154.2800 TX 154.2800 TX Tone 118.8	Mutual Aid	<b>*Note</b>
		7		RX 173.8250 TX 166.3125 TX Tone 123.0	BLM Rpt	<b>Press zero (0) on the keypad to hit Oak Fire Repeater</b>
		8		RX 163.7125 TX 163.7125 TX Tone 127.3	Common	
		9	DIV U	RX 168.050 TX 168.050 TX Tone 131.8	Oak TAC 1	
	-	10	DIV T and Night Ops	RX 168.200 TX 168.200 TX Tone 141.3	Oak TAC 2	
	-	11	DIV V	RX 168.600 TX 168.600 TX Tone 156.7	Oak TAC 3	
	-	12	Command	RX 167.1000 TX 169.7500 TX Tone 162.2	Oak RPT	
	-	13		RX 168.6625 TX 168.6625	A/G56	
		14		RX 166.9625 TX 166.9625	A/G 32	
		15		RX 170.6875 TX 166.5750 TX Tone 162.2	Horse Rpt	
		16		RX 155.0550 TX 153.7850 TX Tone 167.9	GCSO	
ICS 05 9/96		5. PREPARED BY (COMMUNICATIONS UNIT)				



Oak Fire  
 AZ-CNF-670  
 06/29/2014  
 Day Shift  
 NAD 83, UTM Zone 12  
 11.172 Acres as of 1200 hrs 6/29/14



**Legend**

- Infrastructure
- Division
- Camp
- Helibase
- Helispot
- Repeater
- Water Source
- Uncontrolled Fire Edge
- Completed Line
- H - Hand Line
- R - Road as Completed Line
- Management Action Point
- Road
- Trail
- Avoidance Areas
- Wildland Urban Interface
- Wilderness
- Forest Boundary

Devin Quintana  
 6/29/2014  
 18:50 hrs

