

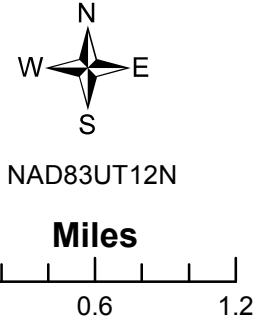
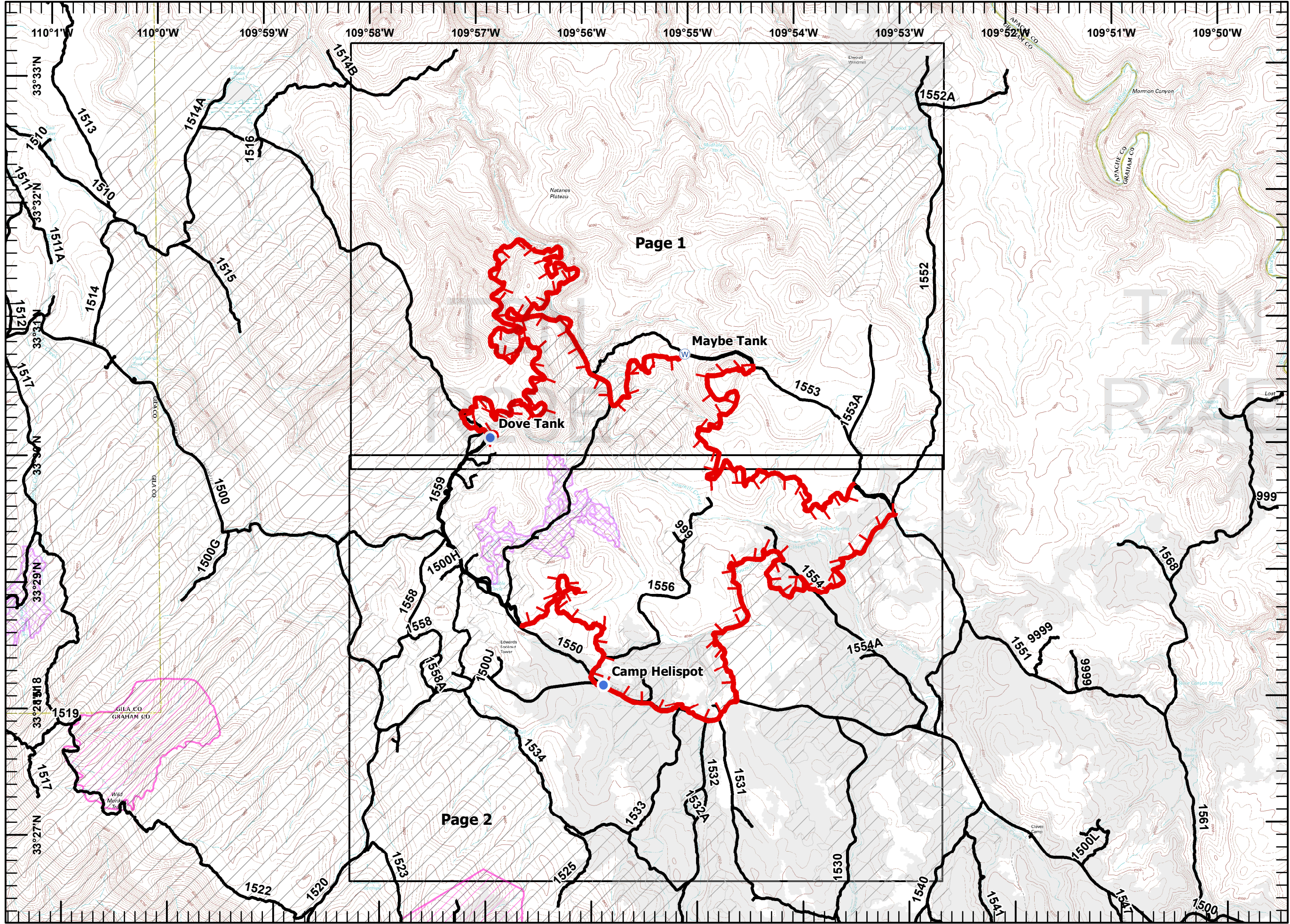
SAWMILL FIRE

AZ-SCA-000571

IAP

DAY SHIFT
June 25, 2015
GIS Acres: 4,602
IR Collected June 23, 2015 @ 2314


- Helispot
- ⊙ Water Source
- Completed Line
- Uncontrolled Fire Edge
- Roads
- - - Logging Roads



SAWMILL FIRE
AZ-SCA-000571
IAP
Page 1 of 2

DAY SHIFT
 June 25, 2015
 GIS Acres: 4,702
 IR Collected
 June 23, 2015 @ 2314

- Helispot
- ⊙ Water Source
- Completed Line
- ┄┄┄** Uncontrolled Fire Edge
- Roads
- - -** Logging Roads
- Timber Stands
- Past Burn/Harvest/Activites since 2005
- MSO-PACS
- MSO-Restricted

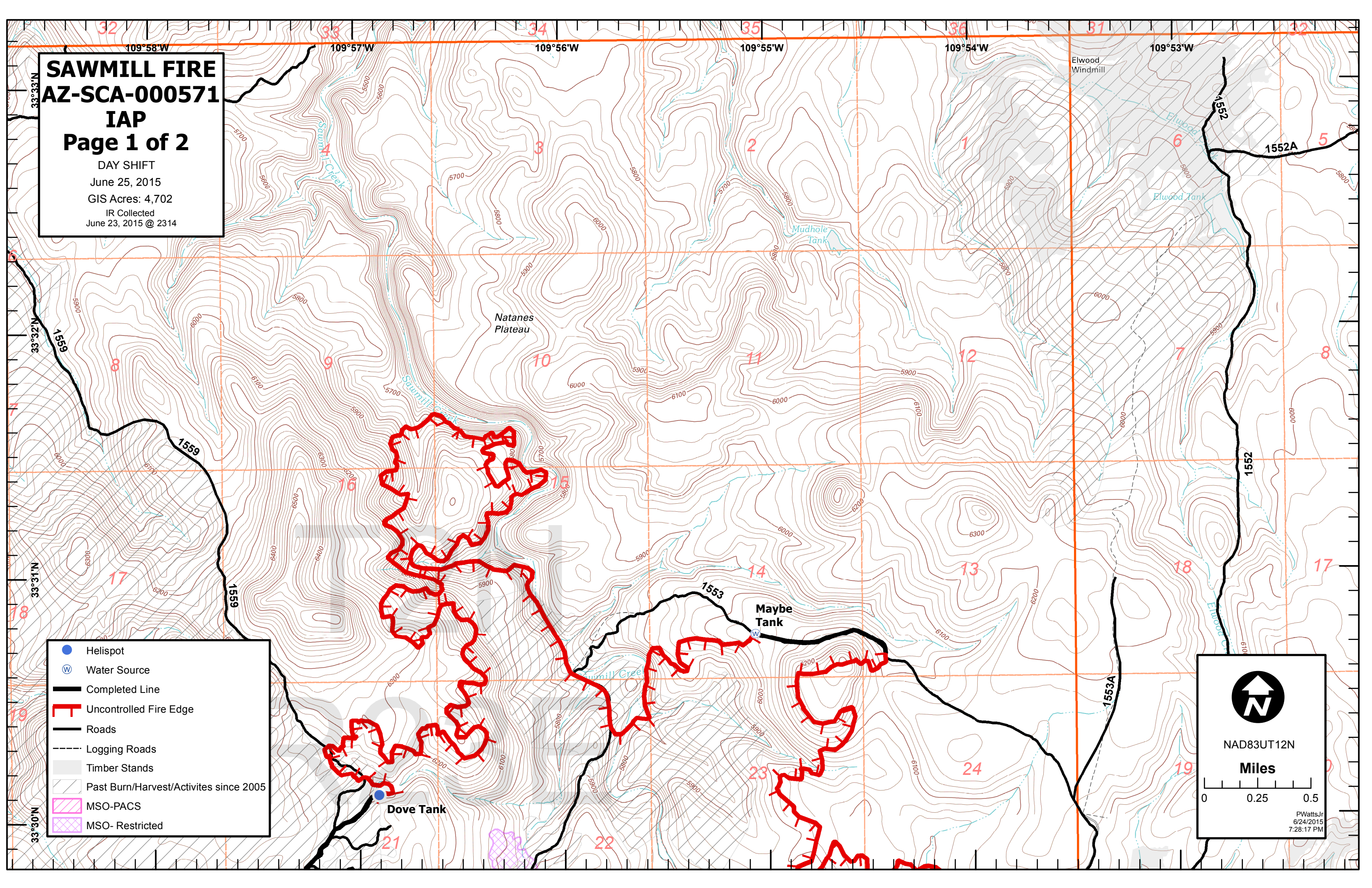


NAD83UT12N

Miles








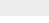


0 0.25 0.5


PWattsJr
6/24/2015
7:28:17 PM



SAWMILL FIRE AZ-SCA-000571 IAP Page 2 of 2

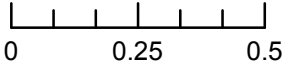
DAY SHIFT
June 25, 2015
GIS Acres: 4,702
IR Collected
June 23, 2015 @ 2314

-  Helispot
-  Water Source
-  Completed Line
-  Uncontrolled Fire Edge
-  Roads
-  Logging Roads
-  Timber Stands
-  Past Burn/Harvest/Activities since 2005
-  MSO-PACS
-  MSO-Restricted



NAD83UT12N

Miles



0 0.25 0.5

PWatts Jr
6/24/2015
7:28:48 PM

