

SAWMILL FIRE
AZ-SCA-000571

IAP

June 25, 2015

GIS Acres: 4,602

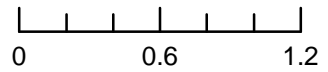
IR Collected June 23, 2015 @ 2314

- Helispot
- Ⓜ Water Source
- Completed Line
- Uncontrolled Fire Edge
- Roads
- Logging Roads

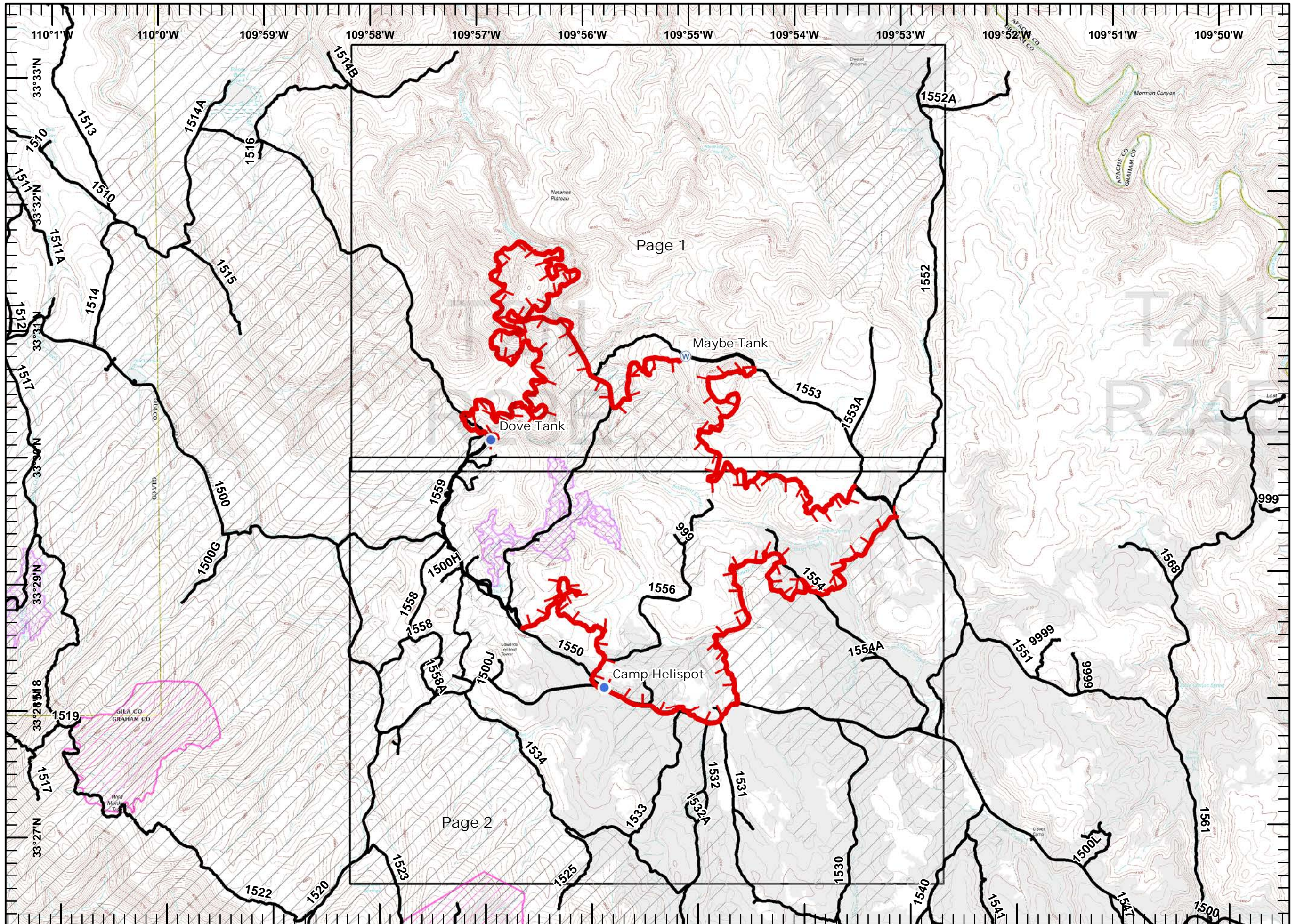


NAD83UT12N

Miles



PWattsJr
6/24/2015
7:26:59 PM



SAWMILL FIRE
AZ-SCA-000571
IAP
Page 1 of 2

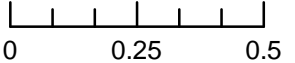
DAY SHIFT
June 25, 2015
GIS Acres: 4,702
IR Collected
June 23, 2015 @ 2314

- Helispot
- Ⓜ Water Source
- Completed Line
- Uncontrolled Fire Edge
- Roads
- - - Logging Roads
- Timber Stands
- ▨ Past Burn/Harvest/Activites since 2005
- ▨ MSO-PACS
- ▨ MSO- Restricted



NAD83UT12N

Miles



PWattsJr
6/24/2015
7:28:17 PM

SAWMILL FIRE
AZ-SCA-000571
IAP
Page 2 of 2

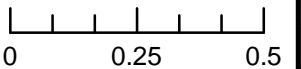
DAY SHIFT
June 25, 2015
GIS Acres: 4,702
IR Collected
June 23, 2015 @ 2314

- Helispot
- Ⓜ Water Source
- Completed Line
- ┌ Uncontrolled Fire Edge
- Roads
- - - Logging Roads
- Timber Stands
- ▨ Past Burn/Harvest/Activites since 2005
- ▨ MSO-PACS
- ▨ MSO- Restricted



NAD83UT12N

Miles



PWattsJr
6/24/2015
7:28:48 PM