

Whitetail Fire
AZ-SCA-000556
IAP
June 22, 2015
Day Shift
 Page of
 21,105 acres GPS flight
 on 6/21/15 18:00hrs

Legend

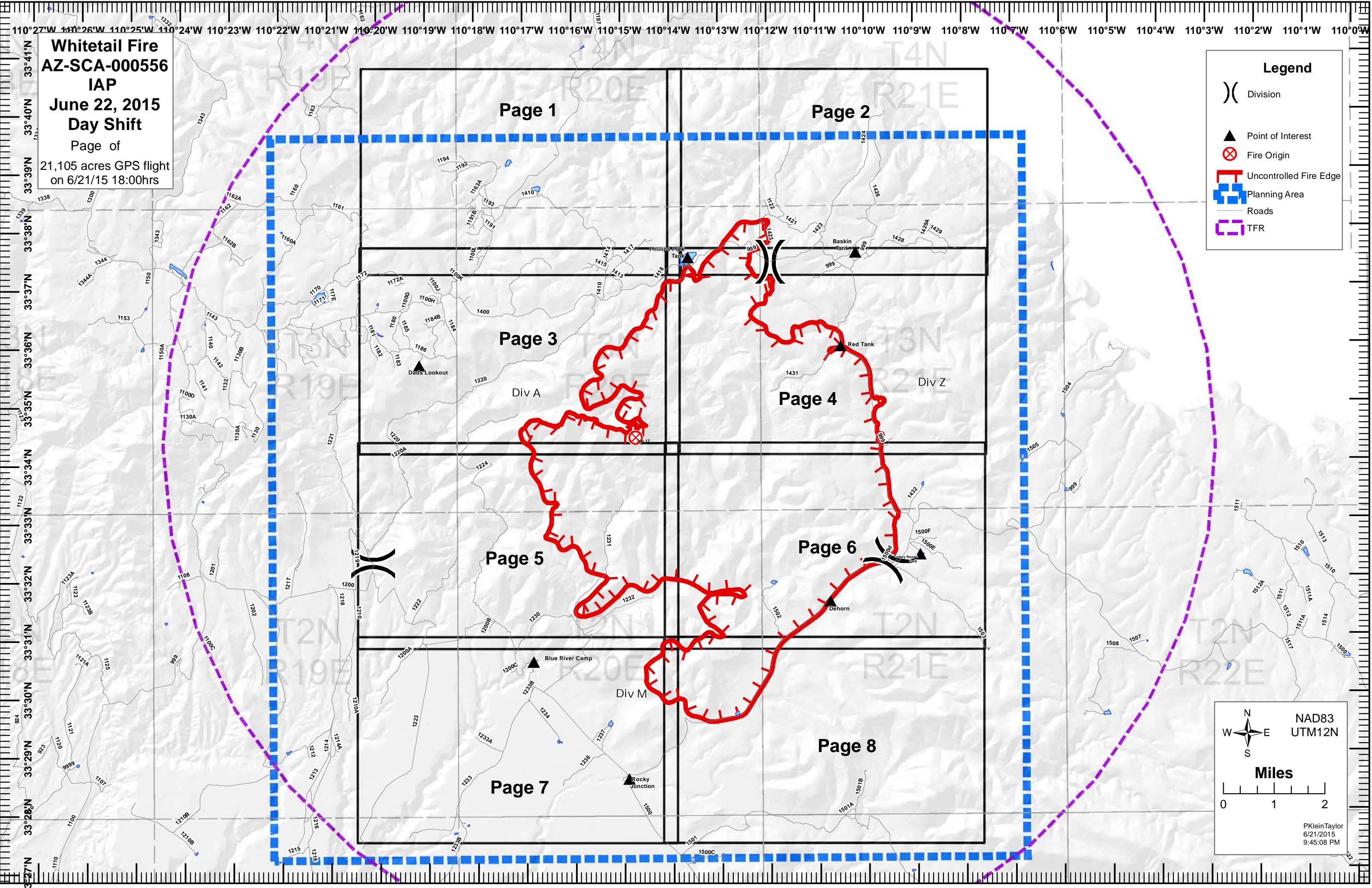
- () Division
- ▲ Point of Interest
- ⊗ Fire Origin
- ▬ Uncontrolled Fire Edge
- ▬ Planning Area
- Roads
- ▬ TFR

NAD83
 UTM12N

Miles

0 1 2

PKleinTaylor
 6/21/2015
 9:45:08 PM





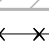


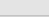





Whitetail Fire
AZ-SCA-000556
IAP
June 22, 2015
Day Shift


Page 1 of 8

21,105 acres GPS flight
on 6/21/15 18:00hrs

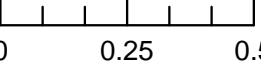
Legend

-  Division
-  Point of Interest
-  Fire Origin
-  Uncontrolled Fire Edge
-  Planning Area
-  Past Burn/Fire
-  Fence
-  Roads
-  MSO-PACS
-  MSO-Restricted
-  Timber Stands

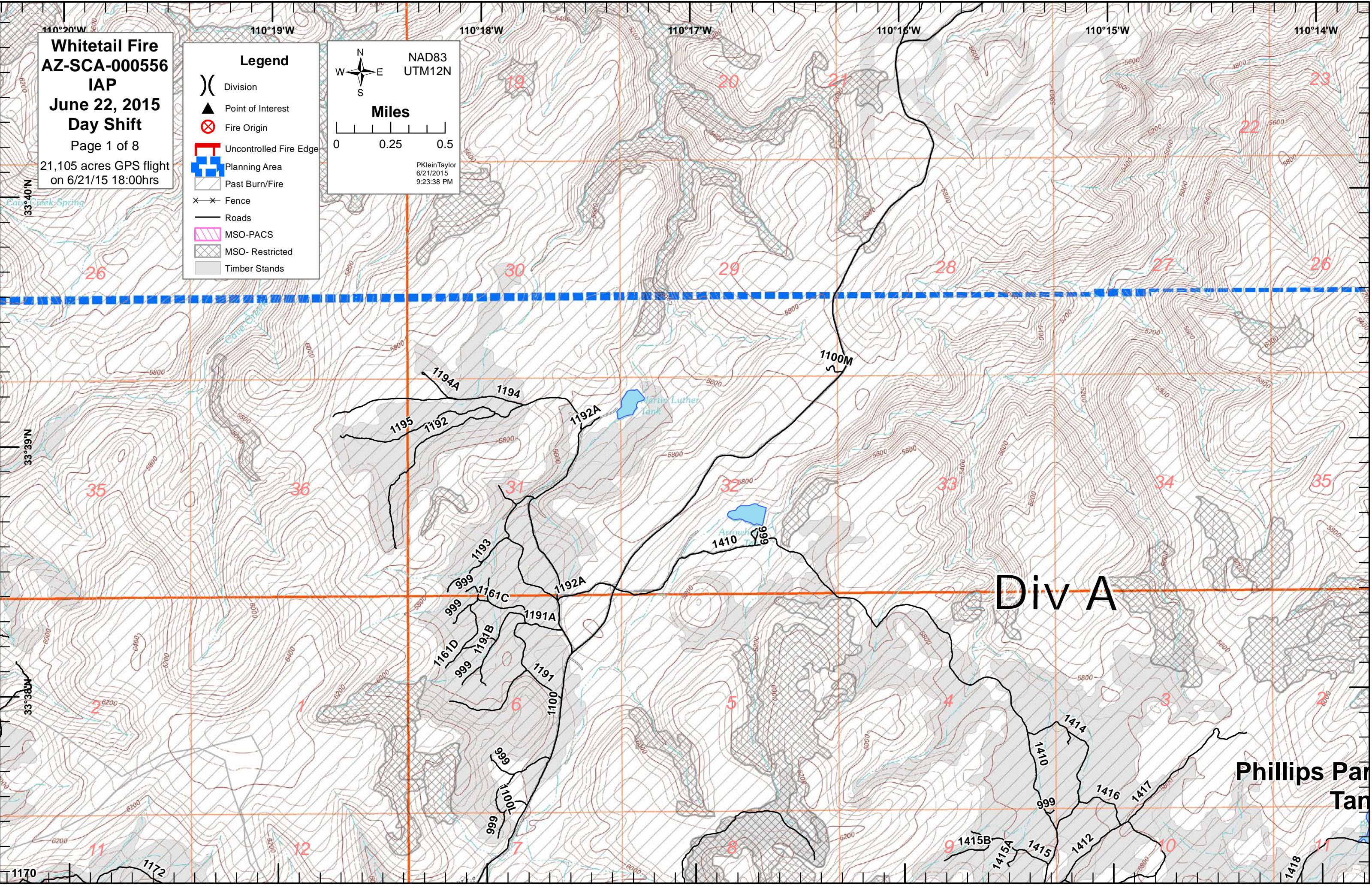
NAD83
UTM12N



Miles



PKleinTaylor
6/21/2015
9:23:38 PM



Whitetail Fire
AZ-SCA-000556
IAP
June 22, 2015
Day Shift

Page 2 of 8
21,105 acres GPS flight
on 6/21/15 18:00hrs

Legend

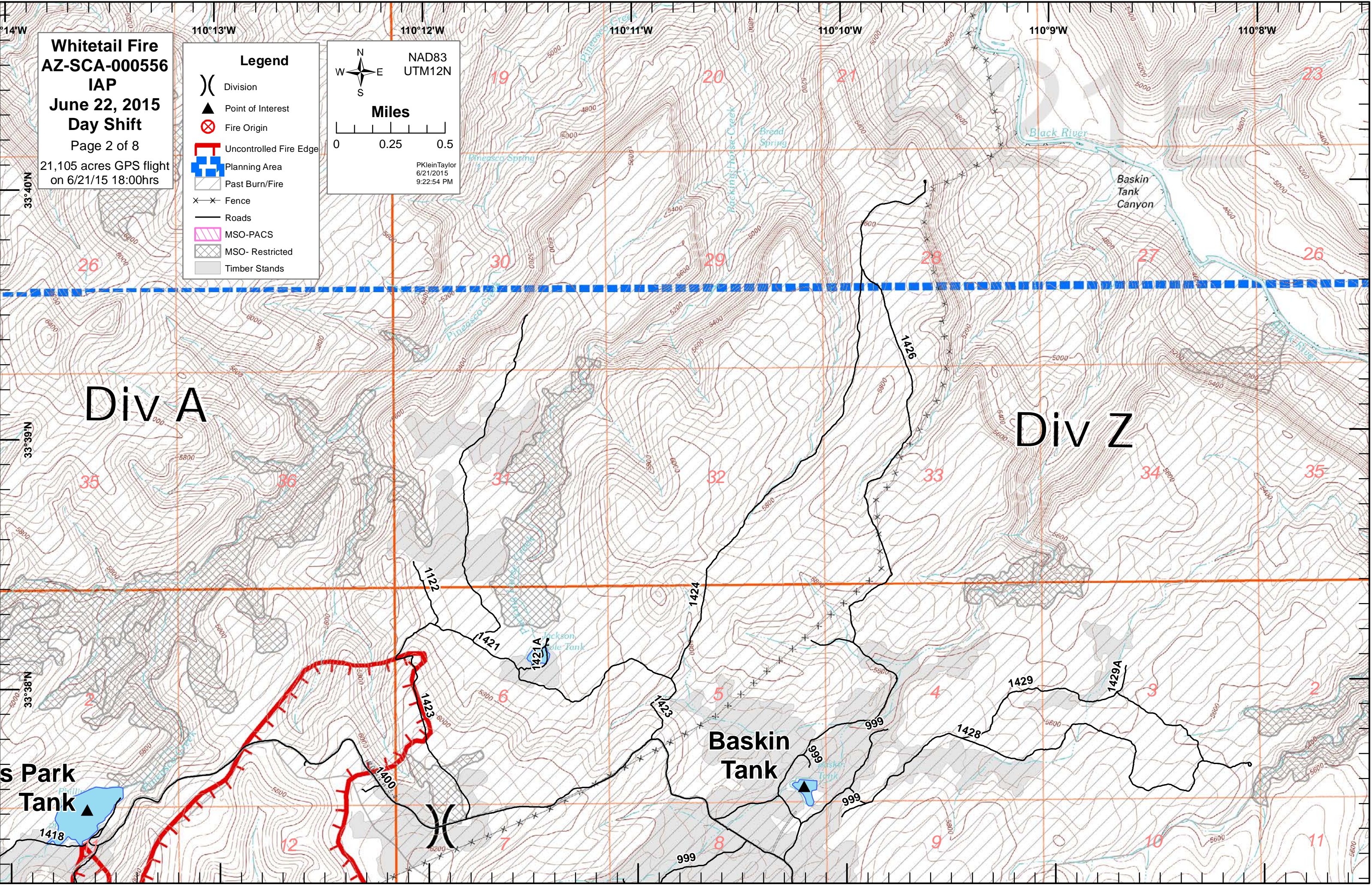
- () Division
- ▲ Point of Interest
- ⊗ Fire Origin
- ▬ Uncontrolled Fire Edge
- ▬ Planning Area
- ▬ Past Burn/Fire
- ×× Fence
- Roads
- ▨ MSO-PACS
- ▩ MSO-Restricted
- Timber Stands

NAD83
UTM12N

Miles

0 0.25 0.5

PKleinTaylor
6/21/2015
9:22:54 PM



Div A

Div Z

S Park Tank

Baskin Tank

Baskin Tank Canyon

110°20'W 110°19'W 110°18'W 110°17'W 110°16'W 110°15'W 110°14'W

33°37'N 33°36'N 33°35'N

Whitetail Fire
AZ-SCA-000556
IAP
June 22, 2015
Day Shift
Page 3 of 8
21,105 acres GPS flight
on 6/21/15 18:00hrs

NAD83
UTM12N

Miles

PKleinTaylor
6/21/2015
9:21:56 PM

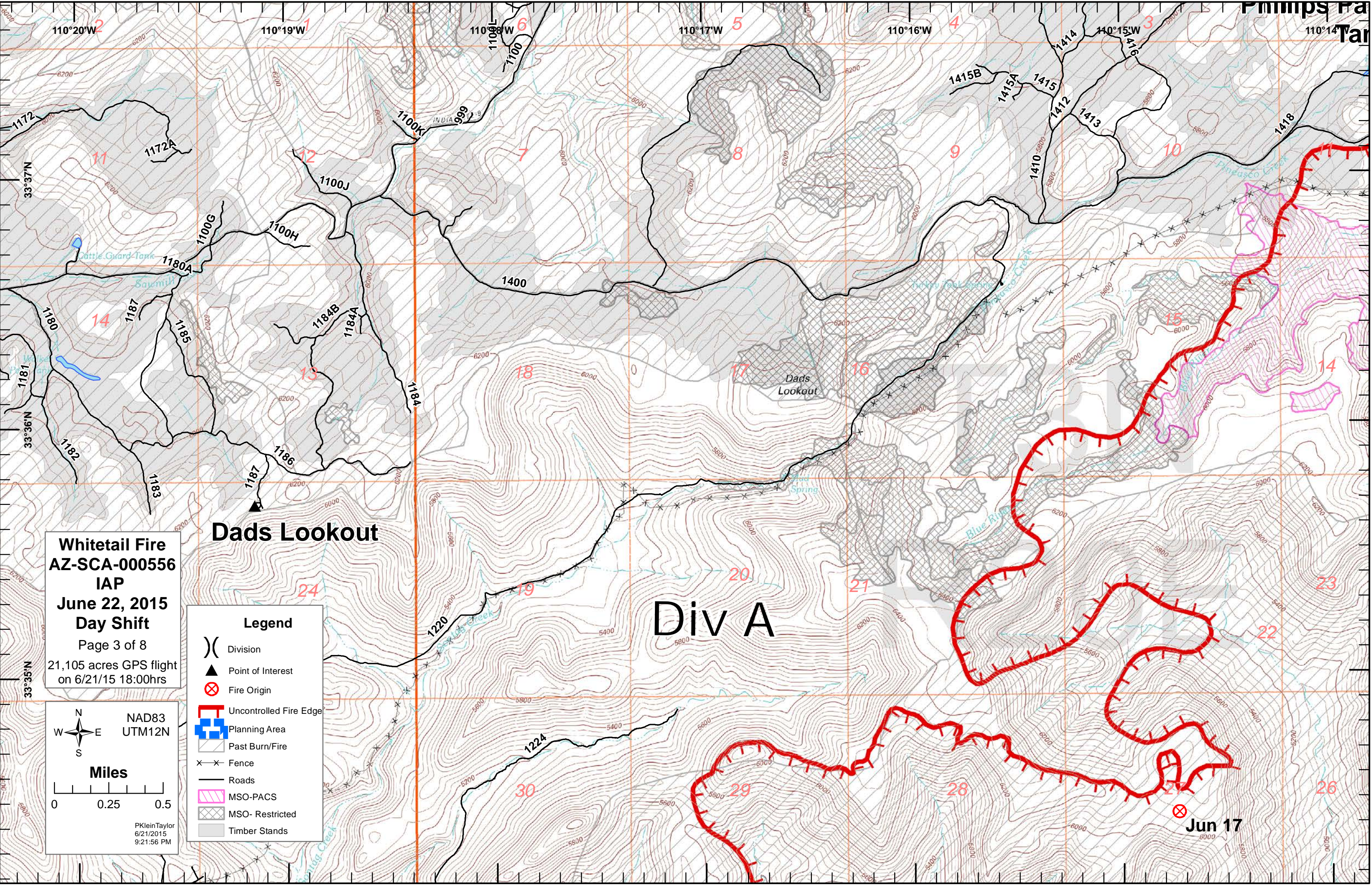
Legend

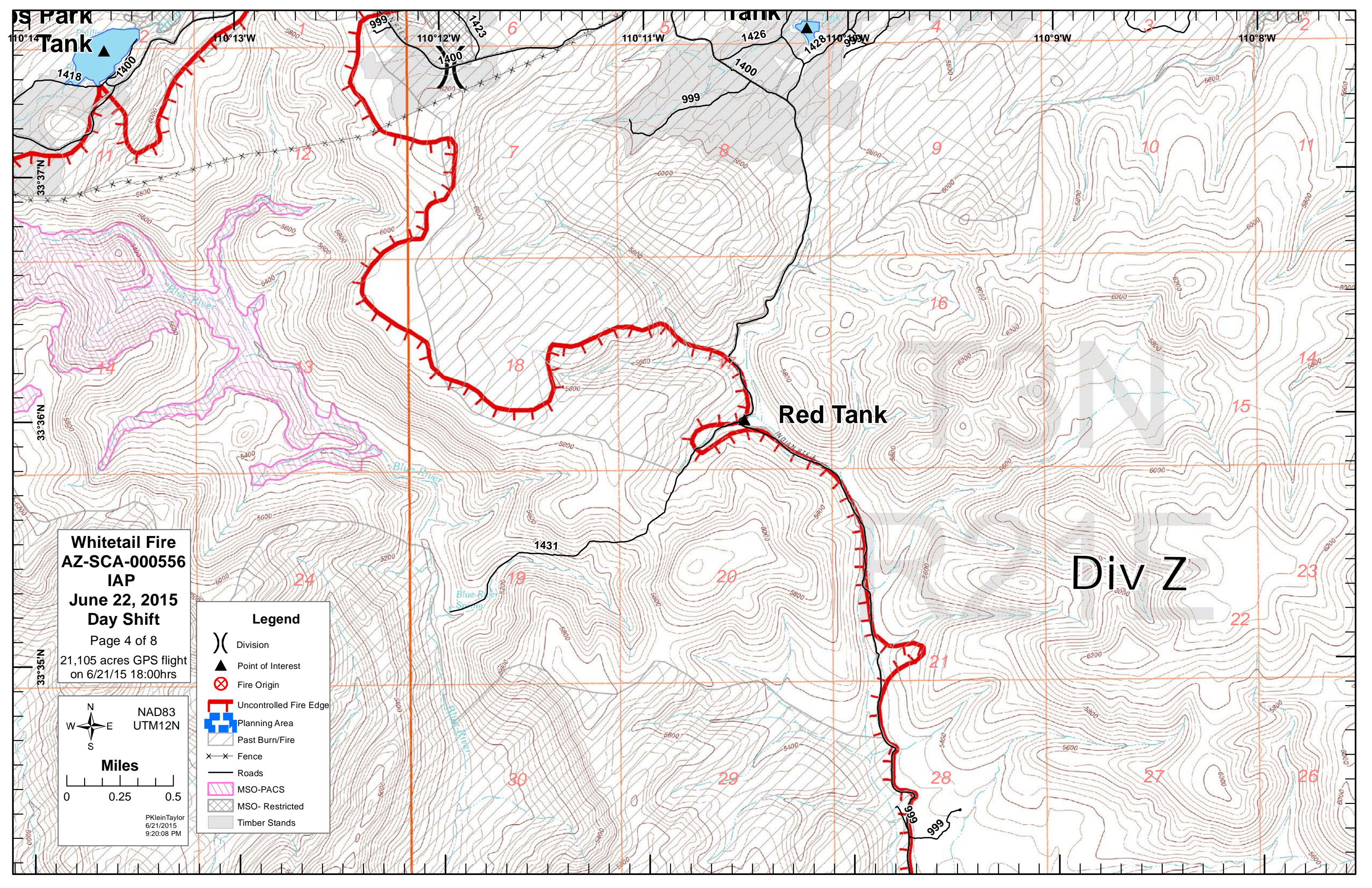
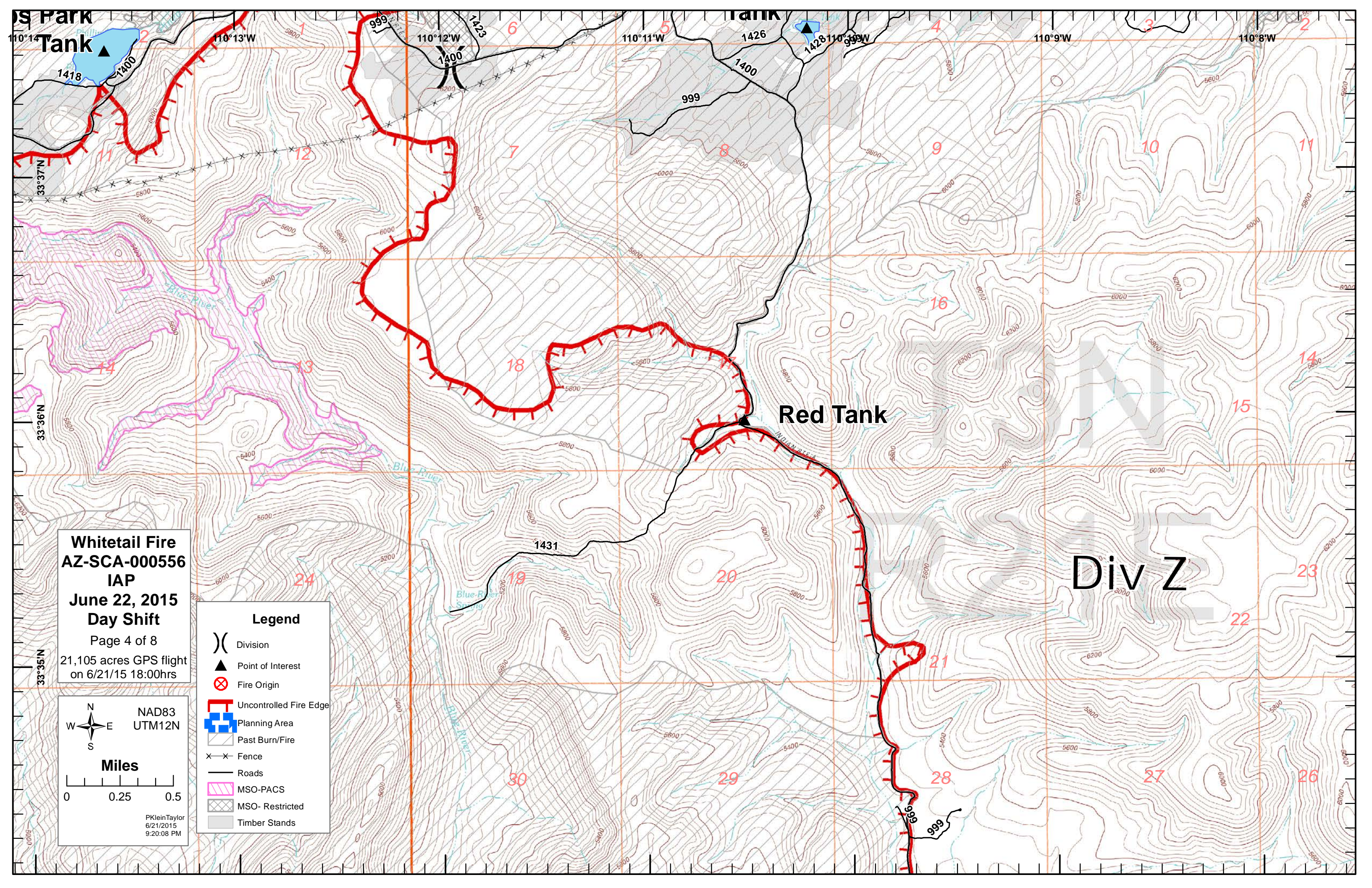
- () Division
- ▲ Point of Interest
- ⊗ Fire Origin
- ▬ Uncontrolled Fire Edge
- ⊕ Planning Area
- ▨ Past Burn/Fire
- ××× Fence
- Roads
- ▨ MSO-PACS
- ▨ MSO- Restricted
- ▨ Timber Stands

Dads Lookout

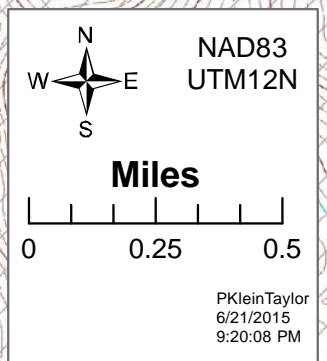
Div A

Jun 17





Whitetail Fire
AZ-SCA-000556
IAP
June 22, 2015
Day Shift
Page 4 of 8
21,105 acres GPS flight
on 6/21/15 18:00hrs



Legend	
()	Division
▲	Point of Interest
⊗	Fire Origin
—	Uncontrolled Fire Edge
+	Planning Area
▨	Past Burn/Fire
—x—	Fence
—	Roads
▨	MSO-PACS
▨	MSO- Restricted
▨	Timber Stands

Div Z

**Whitetail Fire
AZ-SCA-000556**

**IAP
June 22, 2015
Day Shift**

Page 5 of 8
21,105 acres GPS flight
on 6/21/15 18:00hrs

Legend

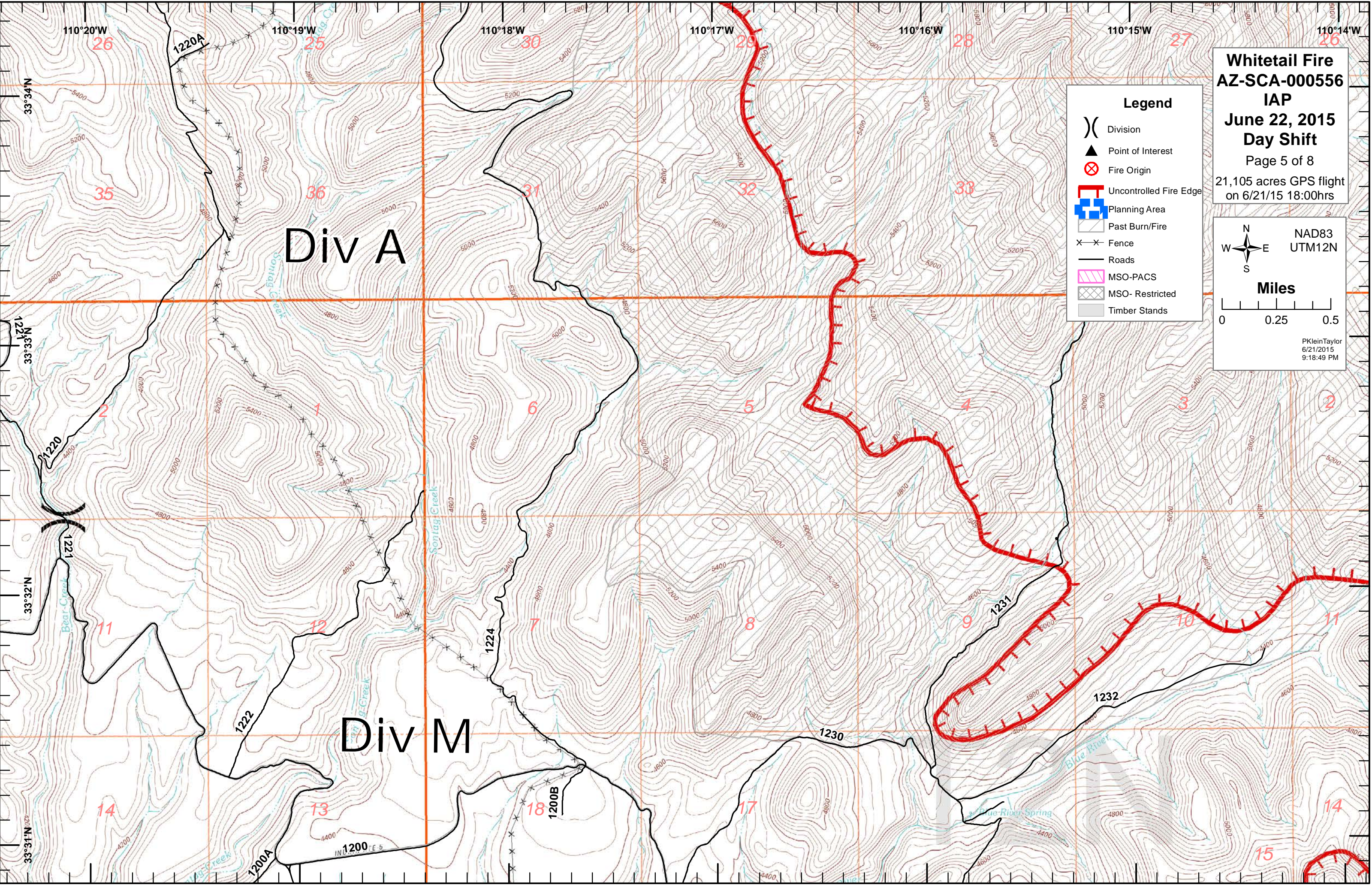
- () Division
- ▲ Point of Interest
- ⊗ Fire Origin
- ▬ Uncontrolled Fire Edge
- ▬ Planning Area
- ▬ Past Burn/Fire
- X-X Fence
- Roads
- ▨ MSO-PACS
- ▧ MSO-Restricted
- Timber Stands

NAD83
UTM12N

Miles

0 0.25 0.5


PKleinTaylor
6/21/2015
9:18:49 PM



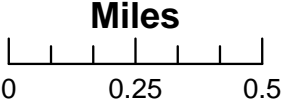
Whitetail Fire
AZ-SCA-000556
IAP
June 22, 2015
Day Shift

Page 6 of 8
21,105 acres GPS flight
on 6/21/15 18:00hrs

NAD83
UTM12N



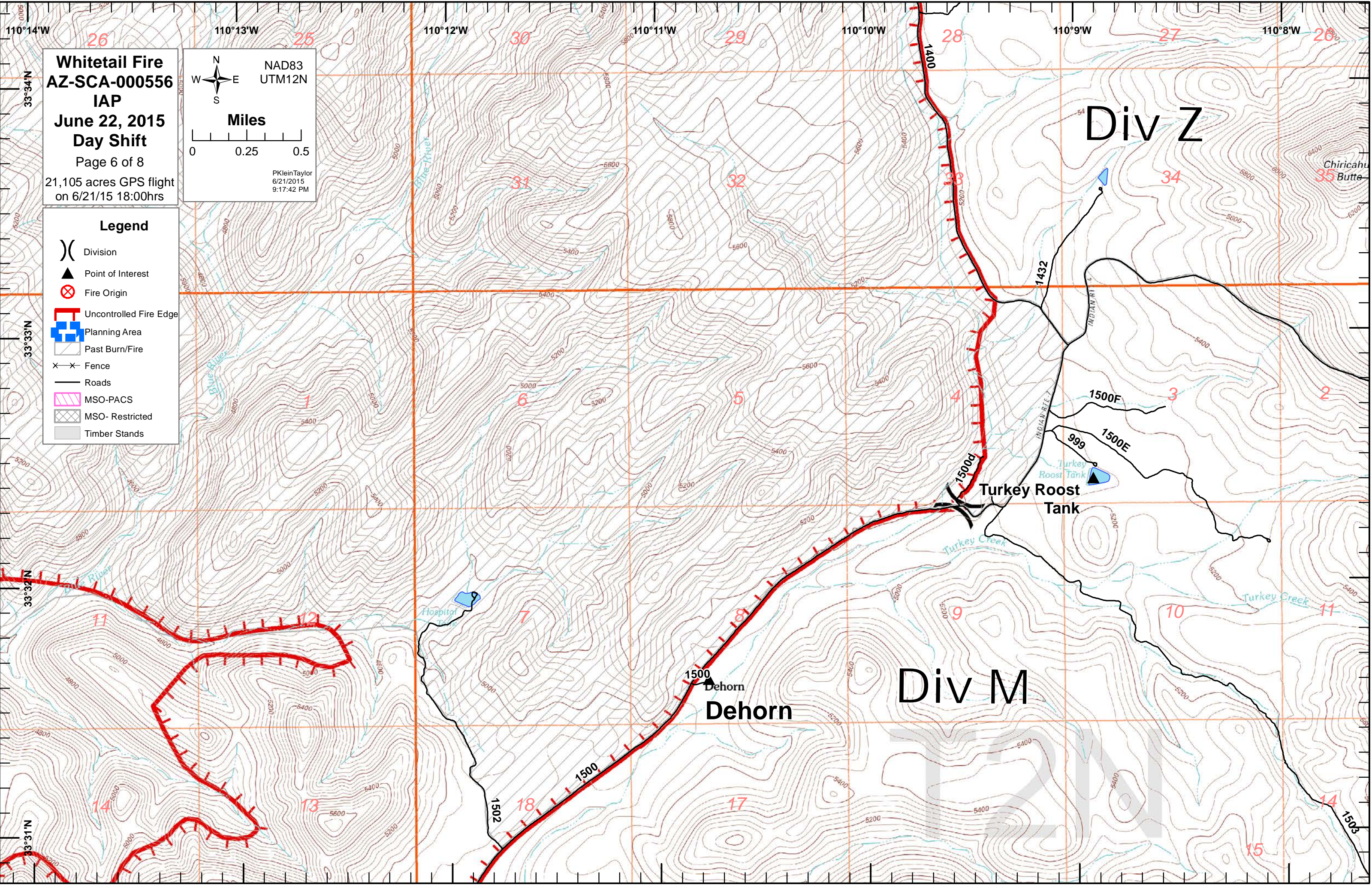
Miles



PKleinTaylor
6/21/2015
9:17:42 PM

Legend

- () Division
- ▲ Point of Interest
- ⊗ Fire Origin
- ▬ Uncontrolled Fire Edge
- ⊕ Planning Area
- ▭ Past Burn/Fire
- × × Fence
- Roads
- ▨ MSO-PACS
- ▩ MSO-Restricted
- Timber Stands



Whitetail Fire
AZ-SCA-000556
IAP
June 22, 2015
Day Shift
Page 7 of 8
21,105 acres GPS flight
on 6/21/15 18:00hrs

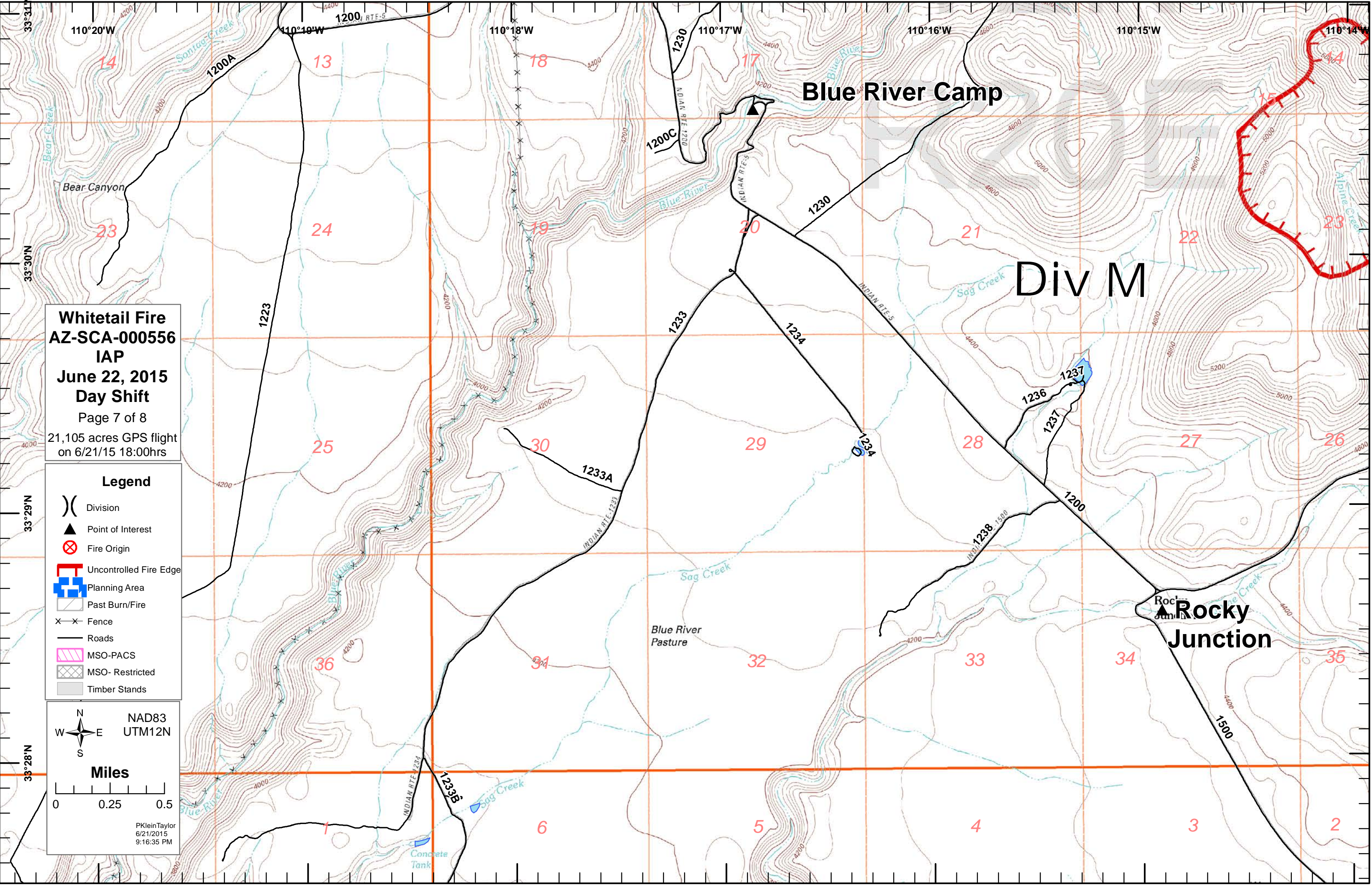
- Legend**
- Division
 - Point of Interest
 - Fire Origin
 - Uncontrolled Fire Edge
 - Planning Area
 - Past Burn/Fire
 - Fence
 - Roads
 - MSO-PACS
 - MSO-Restricted
 - Timber Stands

NAD83
UTM12N

Miles

0 0.25 0.5

PKleinTaylor
6/21/2015
9:16:35 PM



Div M

Whitetail Fire
AZ-SCA-000556
IAP
June 22, 2015
Day Shift
Page 8 of 8
21,105 acres GPS flight
on 6/21/15 18:00hrs

- Legend**
- () Division
 - ▲ Point of Interest
 - ⊗ Fire Origin
 - ▬ Uncontrolled Fire Edge
 - ⊕ Planning Area
 - ▨ Past Burn/Fire
 - ×-× Fence
 - Roads
 - ▨ MSO-PACS
 - ▨ MSO-Restricted
 - Timber Stands

NAD83
UTM12N

Miles

0 0.25 0.5

PKleinTaylor
6/21/2015
9:12:08 PM

