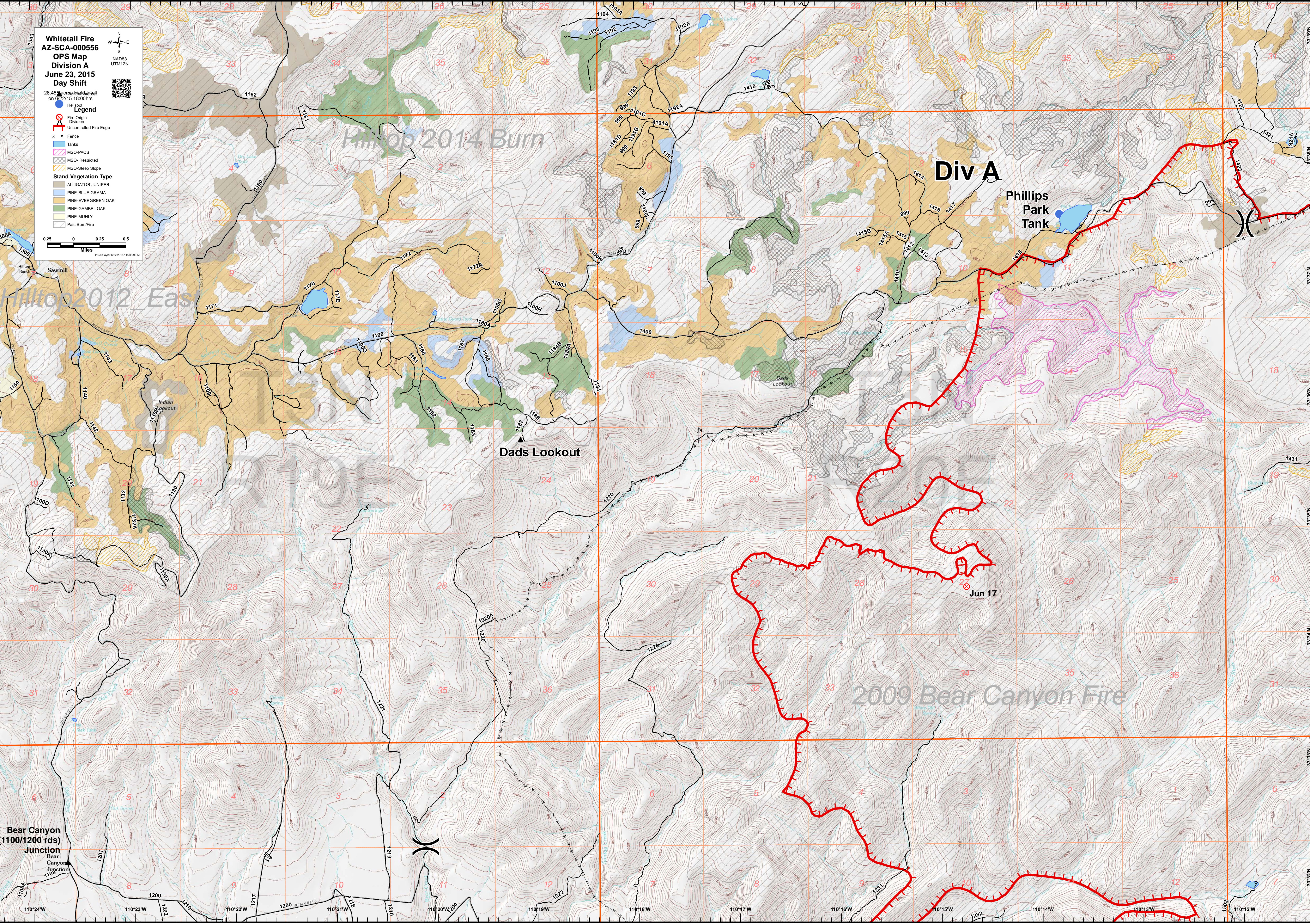


**Whitetail Fire**  
 AZ-SCA-000556  
 OPS Map  
 Division A  
 June 23, 2015  
 Day Shift  
 26,457 acres field detail  
 on 6/22/15 18:00hrs

NAD83  
 UTM12N

Legend  
 Helipoint  
 Fire Origin Division  
 Uncontrolled Fire Edge  
 Fence  
 Tanks  
 MSO-PACS  
 MSO-Restricted  
 MSO-Steep Slope  
**Stand Vegetation Type**  
 ALLIGATOR JUNIPER  
 PINE-BLUE GRAMA  
 PINE-EVERGREEN OAK  
 PINE-GAMBEL OAK  
 PINE-MUHLY  
 Past Burn Fire

0 0.25 0.5  
 Miles  
 Photo by Taylor 6/22/2015 11:02:29 PM



Bear Canyon  
 (1100/1200 rds)  
 Junction  
 Bear  
 Canyon  
 Junction  
 1109

110°24'W 110°23'W 120° 1201 110°22'W 1217 1200 INDIAN HTS 110°21'W 1218 1210 110°20'W 1200 110°19'W 1222 110°18'W 1224 110°17'W 110°16'W 110°15'W 110°14'W 110°13'W 1502 110°12'W 33°37'N 33°36'N 33°35'N 33°34'N 33°33'N 33°32'N