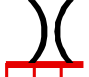
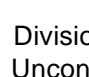



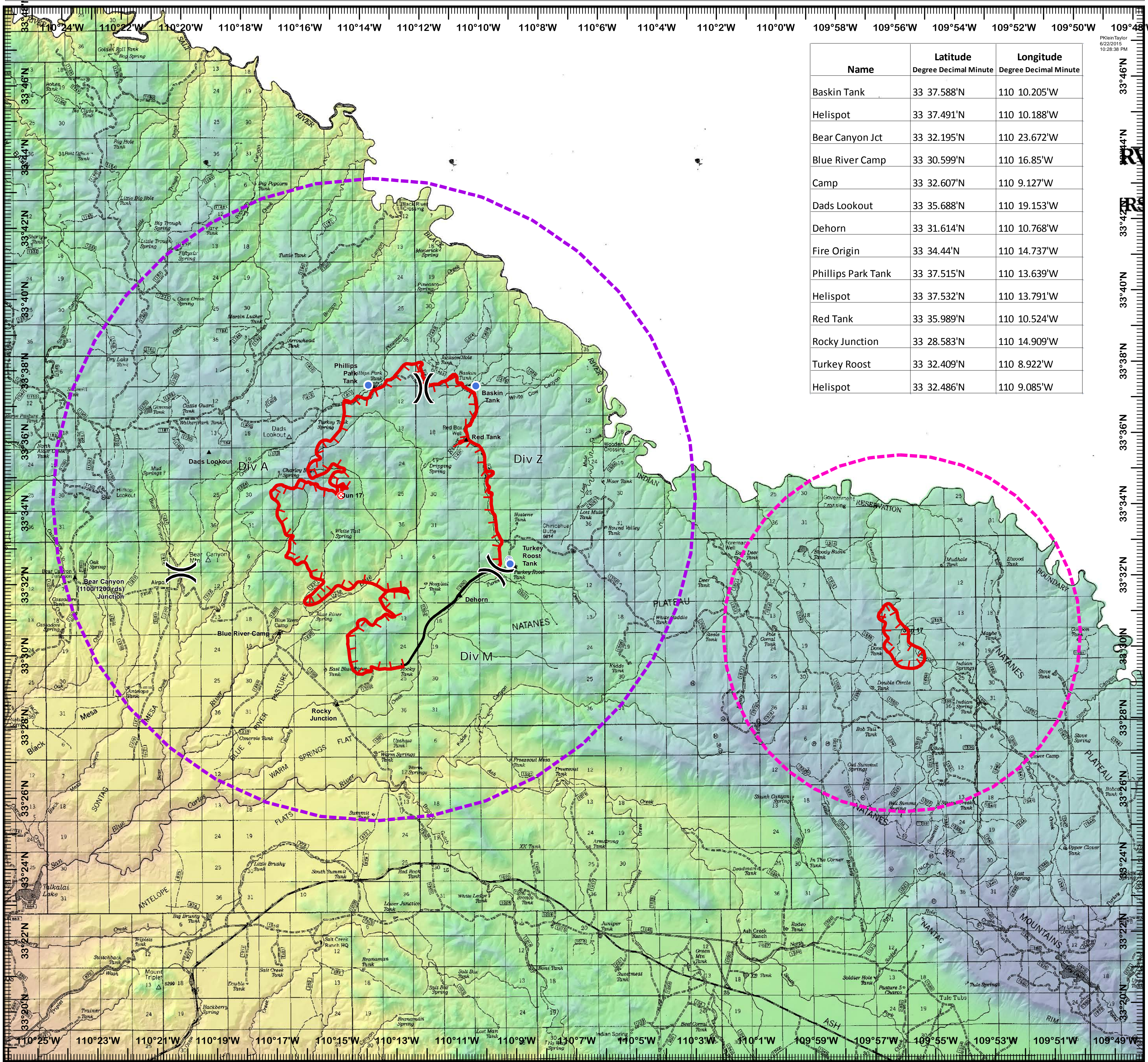
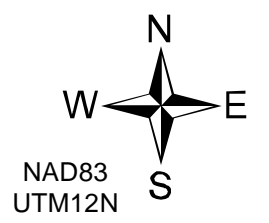


**Whitetail Fire**  
**AZ-SCA-000556**  
**Aviation Map**  
**June 23, 2015**

**Legend**

-  Division
-  Uncontrolled Fire Edge
-  Sawmill TFR
-  150621\_Sawmill\_gps\_NAD83\_poly
-  TRF



Name	Latitude Degree Decimal Minute	Longitude Degree Decimal Minute
Baskin Tank	33 37.588'N	110 10.205'W
Helispot	33 37.491'N	110 10.188'W
Bear Canyon Jct	33 32.195'N	110 23.672'W
Blue River Camp	33 30.599'N	110 16.85'W
Camp	33 32.607'N	110 9.127'W
Dads Lookout	33 35.688'N	110 19.153'W
Dehorn	33 31.614'N	110 10.768'W
Fire Origin	33 34.44'N	110 14.737'W
Phillips Park Tank	33 37.515'N	110 13.639'W
Helispot	33 37.532'N	110 13.791'W
Red Tank	33 35.989'N	110 10.524'W
Rocky Junction	33 28.583'N	110 14.909'W
Turkey Roost	33 32.409'N	110 8.922'W
Helispot	33 32.486'N	110 9.085'W

PKleinTaylor  
6/22/2015  
10:28:38 PM