

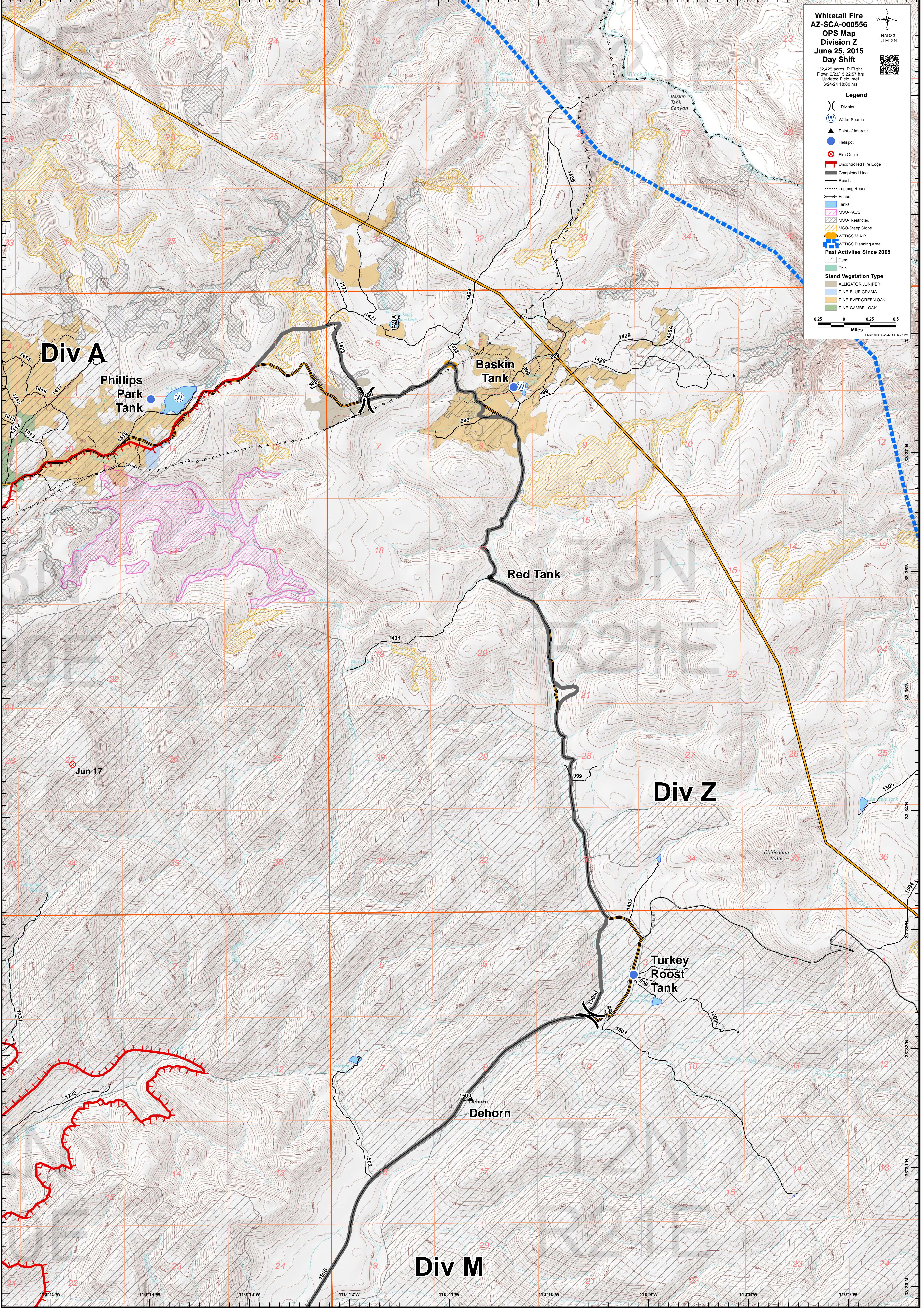
Whitetail Fire
AZ-SCA-000556
OPS Map
Division Z
June 25, 2015
Day Shift

32.425 acres IR Flight
 Flown 6/23/15 22:57 hrs
 Updated Field Invt
 6/24/24 18:00 hrs

Legend

- Division
- Water Source
- Point of Interest
- Helispot
- Fire Origin
- Uncontrolled Fire Edge
- Completed Line
- Roads
- Logging Roads
- Fence
- Tanks
- MSCO-PACS
- MSCO-Restricted
- MSCO-Steep Slope
- WFSS M.A.P.
- WFSS Planning Area
- Past Activities Since 2005
- Burn
- Thin
- Stand Vegetation Type
- ALLIGATOR JUNIPER
- PINE-BLUE GRAMA
- PINE-EVERGREEN OAK
- PINE-GAMBEL OAK

0.25 0 0.25 0.5
 Miles



Div A

Phillips
Park
Tank

Baskin
Tank

Red Tank

Div Z

Turkey
Roost
Tank

Dehorn

Div M

Jun 17

110°15'W 110°14'W 110°13'W 110°12'W 110°11'W 110°10'W 110°9'W 110°8'W 110°7'W

33°37'N 33°35'N 33°34'N 33°32'N 33°30'N