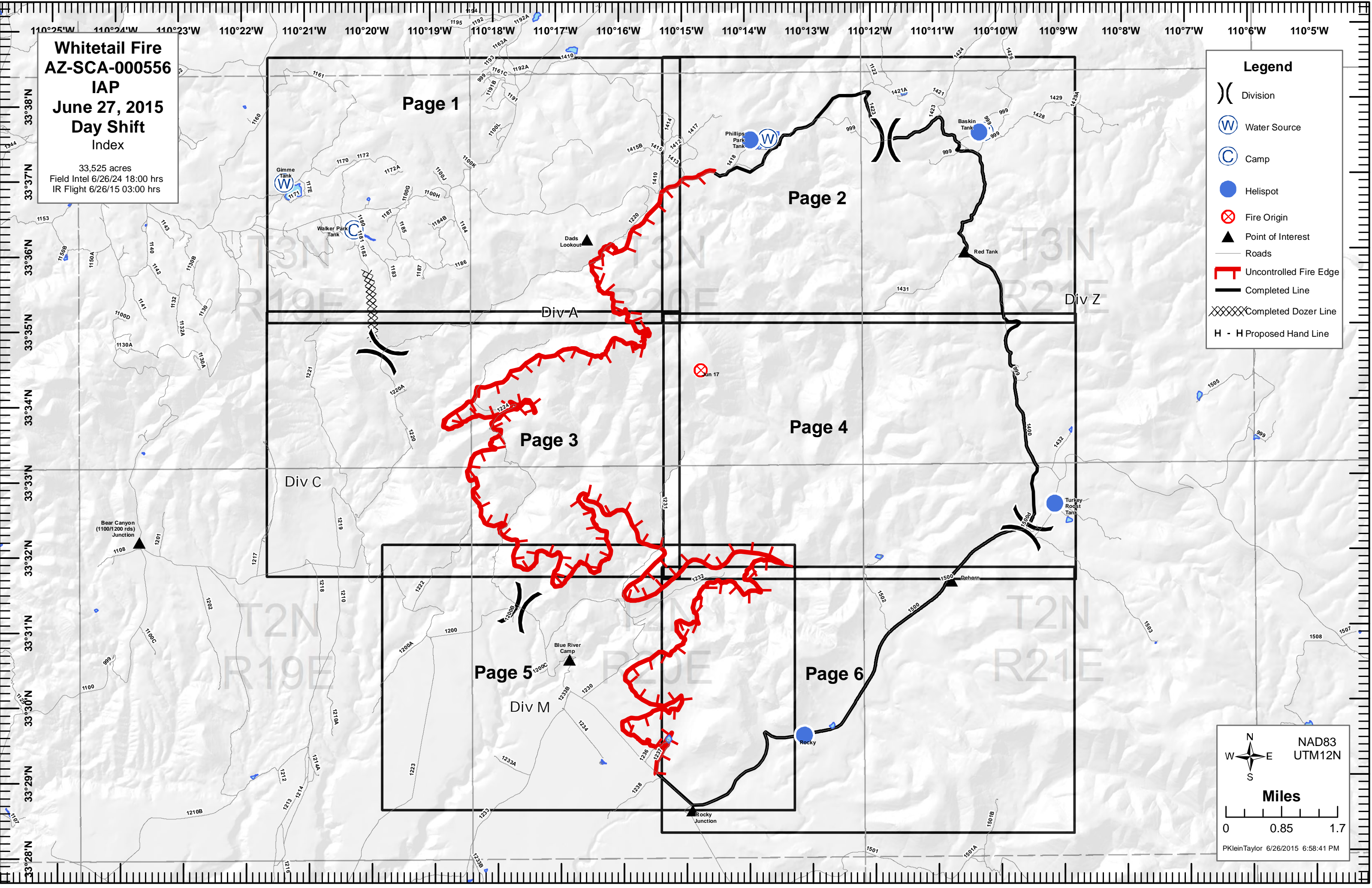


Whitetail Fire
AZ-SCA-000556
IAP
June 27, 2015
Day Shift
Index

33,525 acres
 Field Intel 6/26/24 18:00 hrs
 IR Flight 6/26/15 03:00 hrs

Legend

- () Division
- (W) Water Source
- (C) Camp
- Helispot
- ⊗ Fire Origin
- ▲ Point of Interest
- Roads
- ▬ Uncontrolled Fire Edge
- ▬ Completed Line
- XXXXX Completed Dozer Line
- H - H Proposed Hand Line



NAD83
 UTM12N

Miles

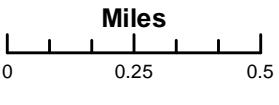
0 0.85 1.7

PKleinTaylor 6/26/2015 6:58:41 PM

Whitetail Fire AZ-SCA-000556

IAP
June 27, 2015
Day Shift
Page 1 of 6

32,535 acres Updated
Field Intel 6/25/24 18:00 hrs
IR Flight 6/23/15 22:57 hrs

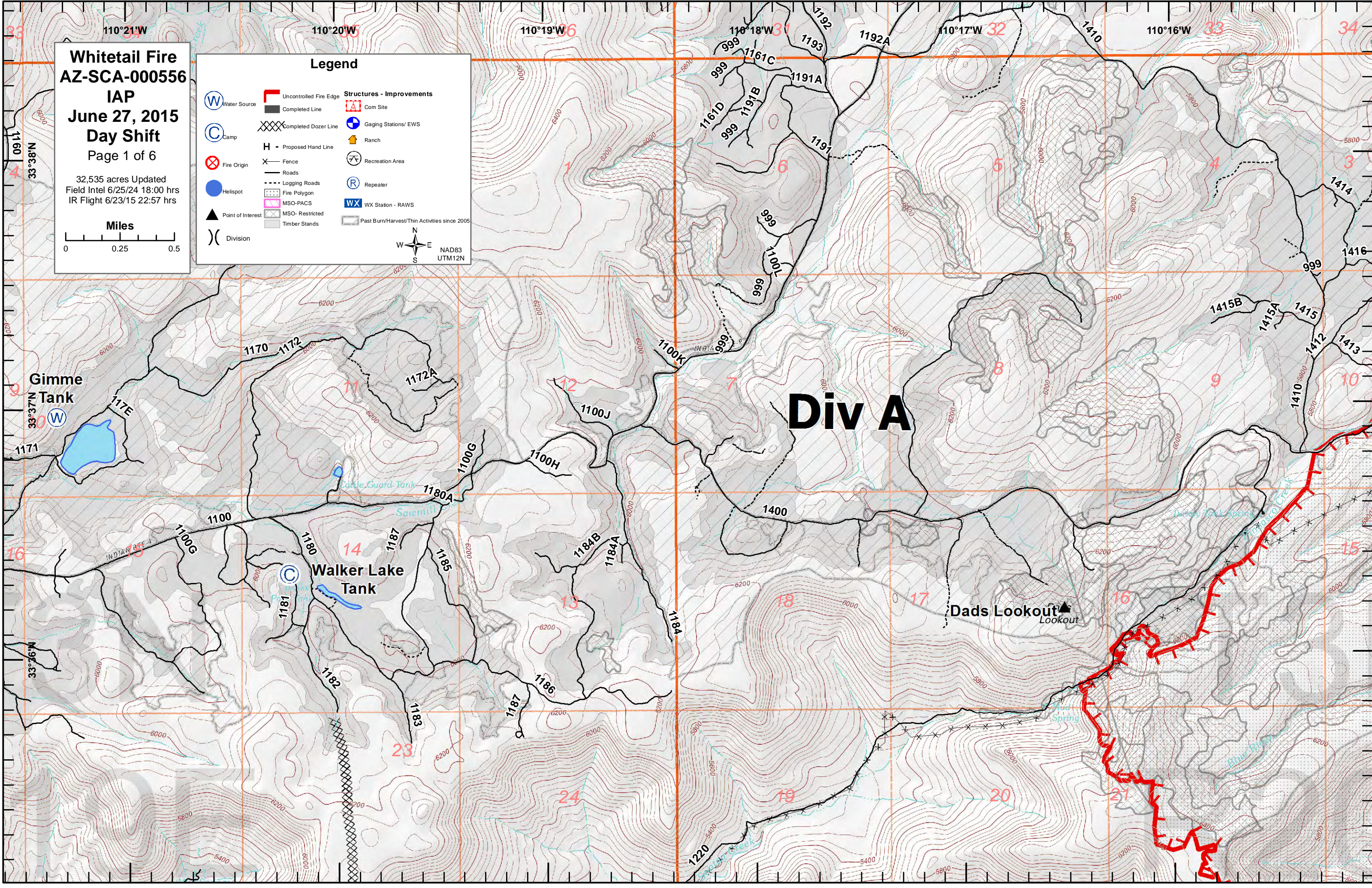


Legend

Water Source	Uncontrolled Fire Edge	Structures - Improvements
Camp	Completed Line	Com Site
Fire Origin	Completed Dozer Line	Gaging Stations/ EWS
Helispot	Proposed Hand Line	Ranch
Point of Interest	Fence	Recreation Area
Division	Roads	Repeater
	Logging Roads	WX Station - RAWS
	Fire Polygon	Past Burn/Harvest/Thin Activities since 2005
	MSO-PACS	
	MSO-Restricted	
	Timber Stands	



Div A

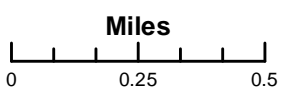


Div A

Div Z

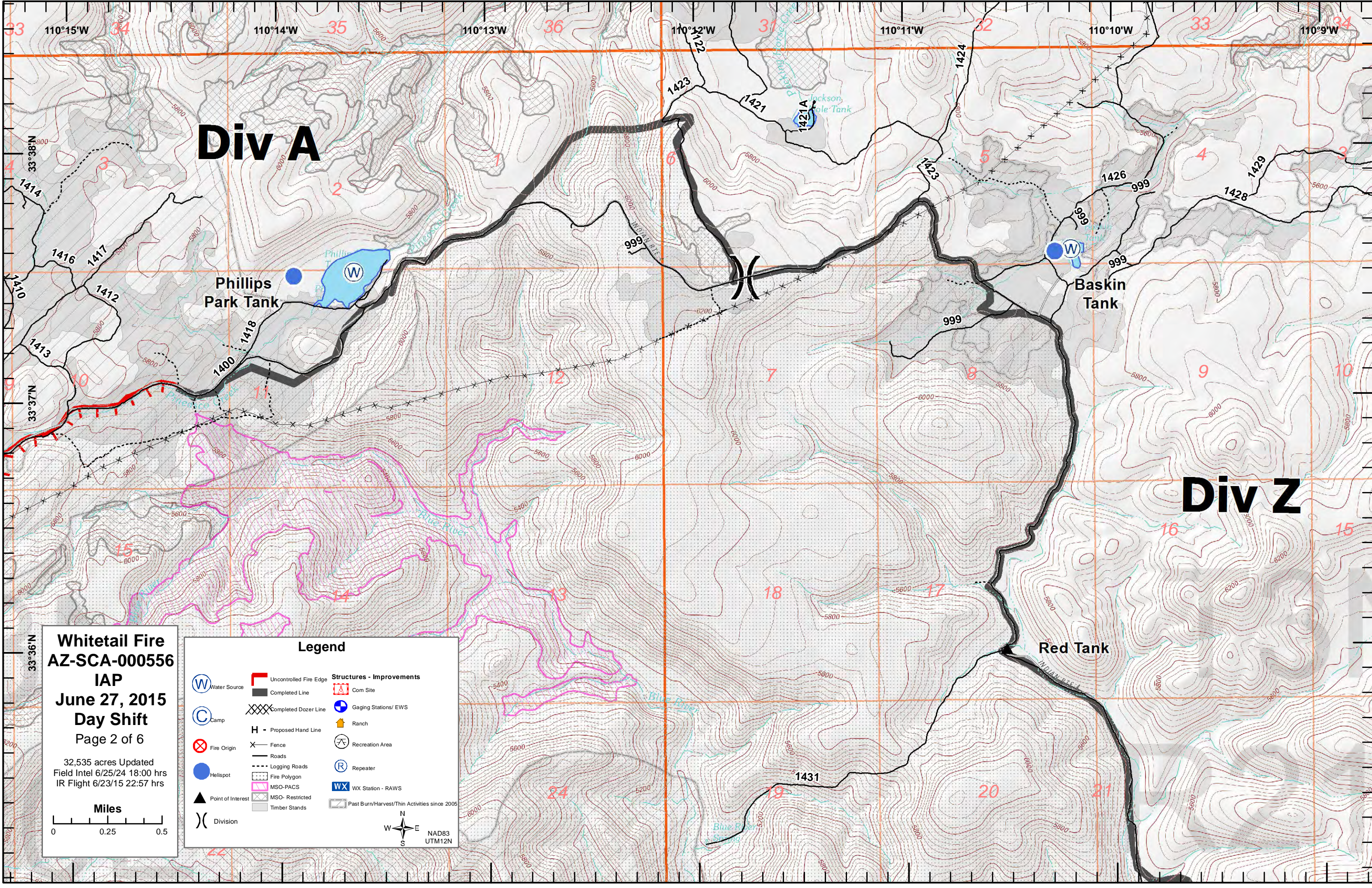
Whitetail Fire
AZ-SCA-000556
IAP
June 27, 2015
Day Shift
Page 2 of 6

32,535 acres Updated
Field Intel 6/25/15 18:00 hrs
IR Flight 6/23/15 22:57 hrs



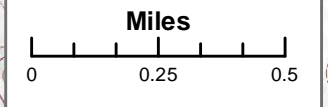
Legend

Water Source	Uncontrolled Fire Edge	Structures - Improvements
Camp	Completed Line	Com Site
Fire Origin	Completed Dozer Line	Gaging Stations/ EWS
Hellspot	Proposed Hand Line	Ranch
Point of Interest	Fence	Recreation Area
Division	Logging Roads	Repeater
	Fire Polygon	WX Station - RAWS
	MSO-PACS	Past Burn/Harvest/Thin Activities since 2005
	MSO- Restricted	
	Timber Stands	



Whitetail Fire
AZ-SCA-000556
IAP
June 27, 2015
Day Shift
 Page 3 of 6

32,535 acres Updated
 Field Intel 6/25/24 18:00 hrs
 IR Flight 6/23/15 22:57 hrs



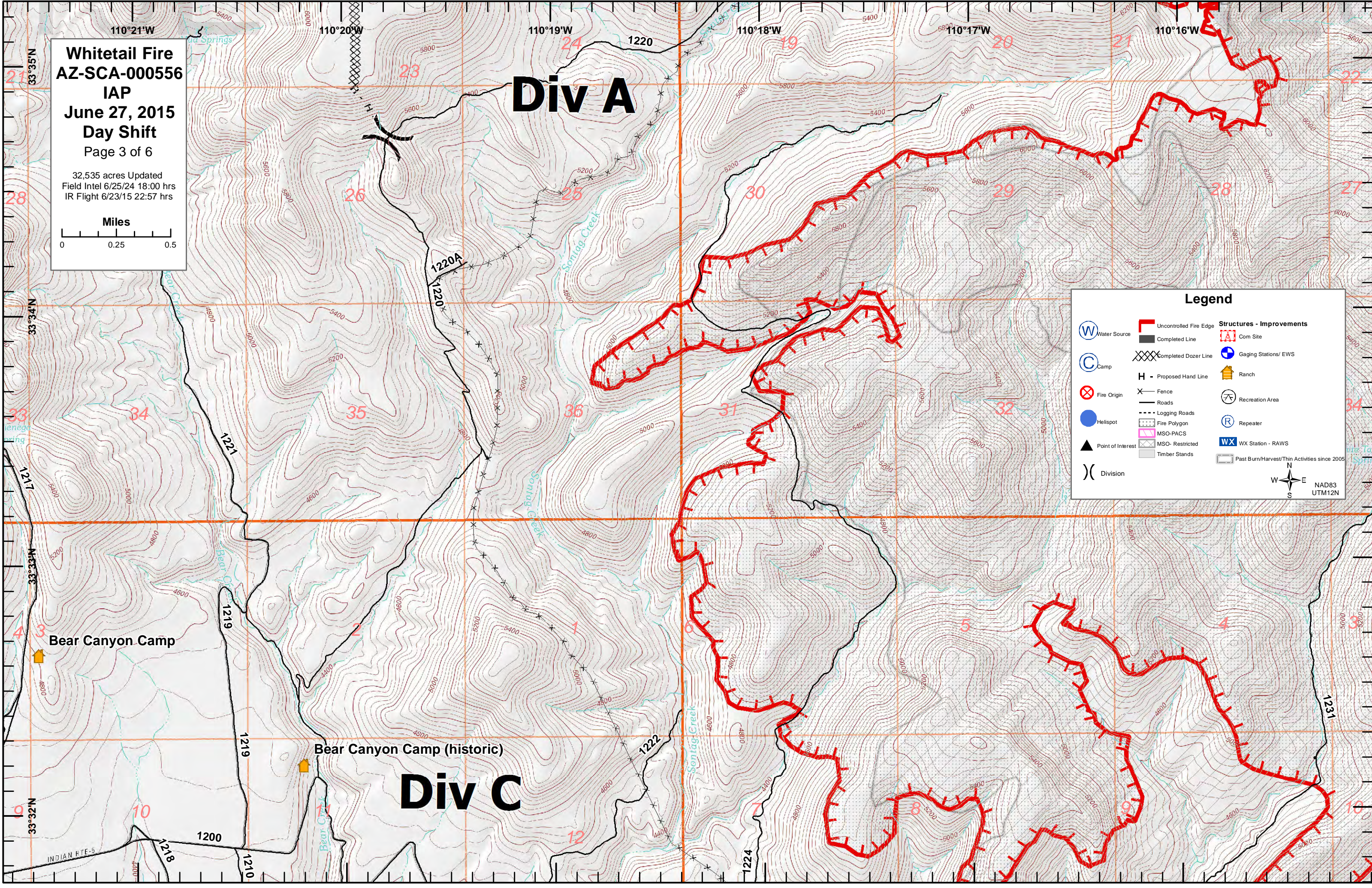
Div A

Div C

Legend

Water Source	Uncontrolled Fire Edge	Structures - Improvements
Camp	Completed Line	Com Site
Fire Origin	Completed Dozer Line	Gaging Stations/ EWS
Helispot	Proposed Hand Line	Ranch
Point of Interest	Fence	Recreation Area
Division	Roads	Repeater
	Logging Roads	WX Station - RAWS
	Fire Polygon	Past Burn/Harvest/Thin Activities since 2005
	MSO-PACS	
	MSO-Restricted	
	Timber Stands	

NAD83
 UTM12N



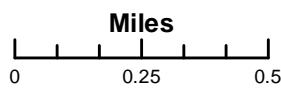
Bear Canyon Camp

Bear Canyon Camp (historic)

INDIAN RTE-5

**Whitetail Fire
AZ-SCA-000556
IAP
June 27, 2015
Day Shift**

Page 4 of 6
32,535 acres Updated
Field Intel 6/25/24 18:00 hrs
IR Flight 6/23/15 22:57 hrs



Legend

- | | | |
|--|--|----------------------------------|
| | | Structures - Improvements |
| | | |
| | | |
| | | |
| | | |
| | | |
| | | |
| | | |
| | | |
| | | |
| | | |



Div Z

Div M

Turkey
Roost
Tank

Turkey
Roost
Tank

Hospital

Turkey
Creek

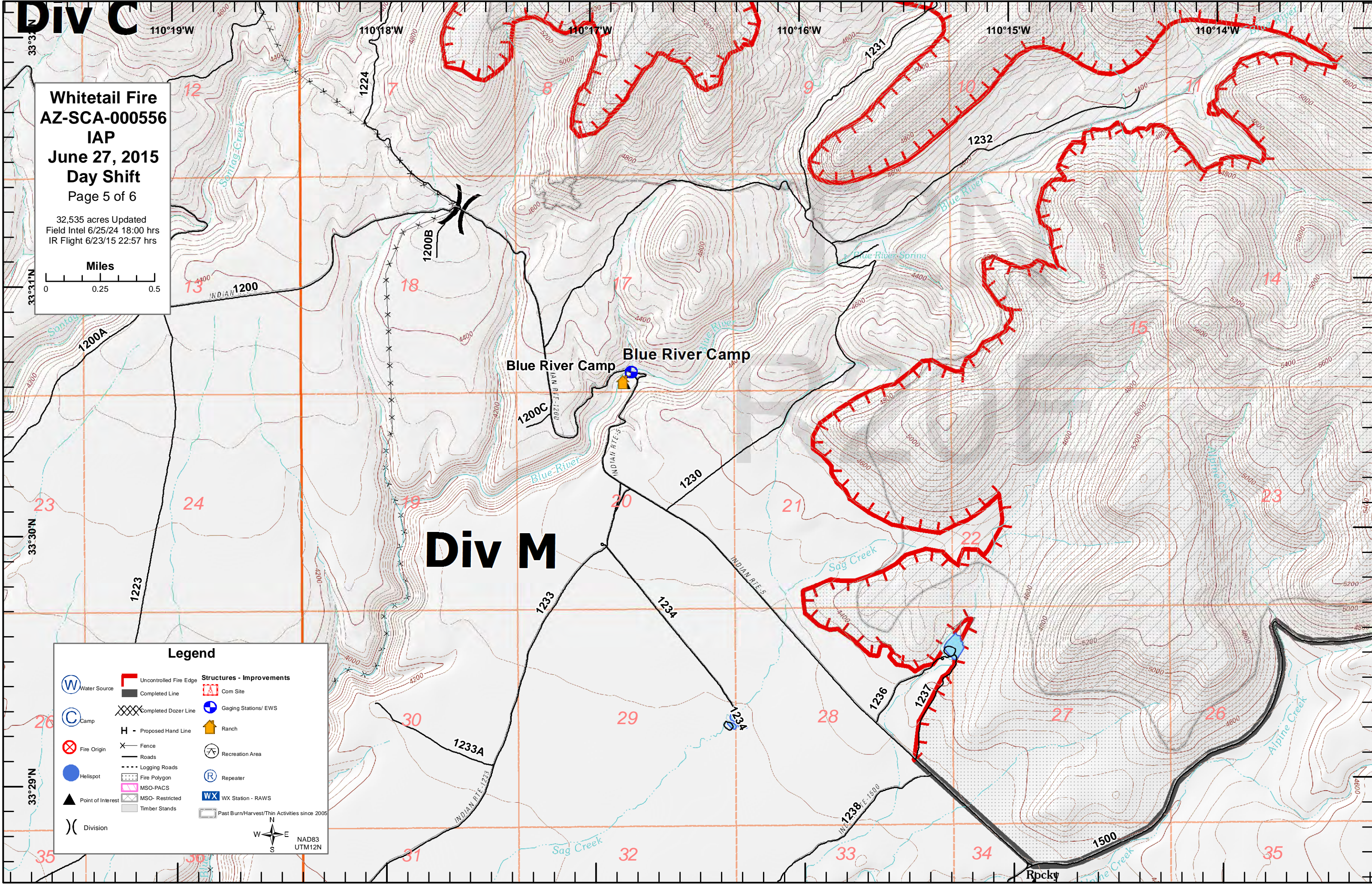
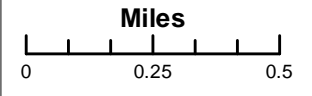
INDIAN
TRAIL

Deber

DIV C

Whitetail Fire
AZ-SCA-000556
IAP
June 27, 2015
Day Shift
Page 5 of 6

32,535 acres Updated
Field Intel 6/25/14 18:00 hrs
IR Flight 6/23/15 22:57 hrs



Div M

Legend

Water Source	Uncontrolled Fire Edge	Structures - Improvements
Camp	Completed Line	Com Site
Fire Origin	Completed Dozer Line	Gaging Stations/ EWS
Helispot	Proposed Hand Line	Ranch
Point of Interest	Fence	Recreation Area
Division	Roads	Repeater
	Logging Roads	WX Station - RAWS
	Fire Polygon	Past Burn/Harvest/Thin Activities since 2005
	MSO-PACS	
	MSO- Restricted	
	Timber Stands	

NAD83
UTM12N

**Whitetail Fire
AZ-SCA-000556**

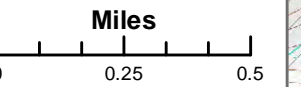
IAP

June 27, 2015

Day Shift

Page 6 of 6

32,535 acres Updated
Field Intel 6/25/24 18:00 hrs
IR Flight 6/23/15 22:57 hrs



Div M

Legend

Water Source	Uncontrolled Fire Edge	Structures - Improvements
Camp	Completed Line	Com Site
Fire Origin	Completed Dozer Line	Gaging Stations/ EWS
Helispot	Proposed Hand Line	Ranch
Point of Interest	Fence	Recreation Area
Division	Roads	Repeater
	Logging Roads	WX Station - RAWS
	Fire Polygon	Past Burn/ Harvest/ Thin Activities since 2005
	MSO-PACS	
	MSO-Restricted	
	Timber Stands	

N
NAD83
S
UTM12N

