

Whitetail

**AZ-SCA-000556
PAJS12 (1502)**

Sawmill

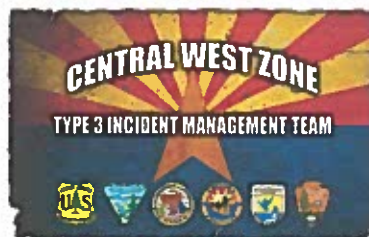
**AZ-SCA-000571
PAJS4S (1502)**


**Bureau of Indian Affairs
San Carlos Agency**

INCIDENT ACTION PLAN

DAY OPERATIONS

**Sunday June 21, 2015
0630-2100 Hours**



INCIDENT OBJECTIVES	1. Incident Name Whitetail Sawmill	2. Date Prepared 06/20/15	3. Time Prepared 2000
4. Operational Period Day Shift 0630-1900 June 21, 2015			
5. General Control Objectives For The Incident (Include Alternatives) Incident Objectives Maintain Firefighter and public safety as the number one priority. Utilize low intensity fire effects near T&E species areas and ponderosa pine stands. Maintain communications with resources on the fire and with other fires in the vicinity. Using indirect attack, manage fire using natural barriers and roads to the extent possible. Manage cost commensurate with the values at risk. Provide opportunities for training of local staff. Strategic Objectives Whitetail Contain fire within the 1400 Road to the north; 1500 Road to the southeast; 1200 Road to the south; and the 1220 Road to the west. Sawmill Contain fire to the north of Route 4; west of Road 1561; east of Basin Fire (2014); south of the Black River.			
6. Weather Forecast For Period See attached weather forecast.			
7. General Safety Message DRIVE SAFELY!!! It's a long drive on dusty roads; drive with your lights & seatbelts on, watch out for animals, and maintain reasonable speeds. Please read the attached Safety Message.			
8. ATTACHEMENTS (X IF ATTACHED) <input checked="" type="checkbox"/> Organization List - ICS 203 <input checked="" type="checkbox"/> Medical Plan - ICS 206 [] _____ <input checked="" type="checkbox"/> Division Assignment Lists - ICS 204 <input checked="" type="checkbox"/> Incident Map [] _____ <input checked="" type="checkbox"/> Communications Plan - ICS 205 [] Traffic Plan [] _____			
9. Prepared By (Planning Section) Todd Bentley	10. Approved By (Incident Commander) Nathan Barrett 		

ORGANIZATION ASSIGNMENT LIST		9. Operations Section	
1. Incident Name		Chief	
Whitetail & Sawmill Fires		Chief (T)	
2. Date		Chief (T)	
06/20/2015	3. Time	a. Whitetail Division/Groups	
2000	Division/Group		A
4. Operational Period		Jonnie Vanderhoeven / Phillip Quochytewa (t)	
06/21/2015 0630-2100		Division/Group	
5. Incident Commander and Staff		M	
Incident Commander	Nate Barrett	Charles Keown / Barry Johnson (t)	
Incident Commander(t)	Brad Johnson	Division/Group	
Safety Officer	Andy Mandell	Z	
Safety Officer (t)	Randy Hopkins	Kelly Jardine / Leon Ben (t)	
Safety Officer		Division/Group	
Liaison Officer		IA	
Information Officer (t)	Valerie Azure	Todd Zumhofe / Mario Dia (t)	
Information Officer (t)	Gabrielle Kenton	Division/Group	
Information Officer		b. Sawmill Division/Groups	
6. Agency Representative		Division/Group	
Agency	Name	Sawmill	
BIA Superintendent (Acting)	Brenda Astor	Paul Musser/Willie Dudley (t)	
BIA Agency Representative	Clark Richins	Division/Group	
BIA Agency Representative	Duane Chapman	c. Air Operations Branch	
BIA Agency Representative	Carlos Nosie	Air Operations Branch Director	
Tribal Representative	Simon Hooke	Air Support Group Supervisor	
Tribal Resource Advisor	Dee Randall	Helibase Manager	
7. Planning Section		Helibase Manger (T)	
Chief	Todd Bentley	10. Finance Section	
Chief (T)		Chief	
Resources Unit Leader (t)	Libby Reiman	Penny Foreman	
Training Specialist		Chief (t)	
Situation Unit		Christina McKerracher	
Fire Behavior Analyst		Time Unit Leader (t)	
Demob Unit Leader		Personnel Time Recorder	
GIS Specialist	Stevenson Talgo	Personnel Time Recorder (t)	
GIS Specialist	Pam Klein-Taylor	Personnel Time Recorder	
Computer Specialist	Alex Pitterle	Cost	
8. Logistics Section		Compensation/Claims Unit	
Chief	Charles Tye	Berlinda Gilbert	
Chief			
Chief			
Medical Unit Leader			
Medical Unit Leader			
Supply Unit Leader			
Ordering Manager			
Facilities Unit (t)	Justin Henderson		
Rec & Distribution Mgr	Ted Aday		
Rec & Distribution Mgr			
Base Camp Manager			
Base Camp Manager			
		Prepared by Planning Section Chief	
		Todd Bentley	

Weather Forecast for the Whitetail Fire

DRY AND VERY HOT WEATHER WILL CONTINUE THROUGH SUNDAY INTO EARLY NEXT WEEK. MINIMUM RELATIVE HUMIDITIES WILL BE IN THE SINGLE DIGITS ACROSS THE LOWER DESERTS EACH AFTERNOON...FOLLOWED BY FAIR OVERNIGHT RECOVERY MOST AREAS. AFTERNOON UPSLOPE WINDS FAVORING THE SOUTHWEST WILL DEVELOP EACH DAY WITH SOME OCCASIONAL GUSTS UP TO 20 MPH DURING THE AFTERNOON HOURS.

.SUNDAY...

- * SKY/WEATHER.....SUNNY.
- * MAX TEMPERATURE.....105-110.
- * 24 HR TREND.....LITTLE CHANGE.
- * MIN HUMIDITY.....9-14 PCT.
- * 24 HR TREND.....LITTLE RH CHANGE.
- * WINDS - 20 FEET...SLOPE/VALLEY..SOUTHWEST 5 TO 15 MPH.
- * WINDS...10000 FT MSL.....SOUTHWEST 10 TO 15 MPH.
- * CHANCE OF PRECIP.....0 PERCENT.
- * LAL.....1.
- * HAINES HIGH LEVEL INDEX.....5 OR MODERATE POTENTIAL FOR LARGE PLUME DOMINATED FIRE GROWTH.
- * MIXING HEIGHT FOR PHOENIX.....7600 FT AGL.
- * TRANSPORT WIND FOR PHOENIX.....SOUTHWEST 7 KNOTS.
- * DISPERSION FOR PHOENIX.....GOOD.

.SUNDAY NIGHT...

- * SKY/WEATHER.....CLEAR.
- * MIN TEMPERATURE.....75-85.
- * 24 HR TREND.....LITTLE CHANGE.
- * MAX HUMIDITY.....25-37 PCT.
- * 24 HR TREND.....6 PCT DRIER.
- * WINDS - 20 FEET...SLOPE/VALLEY..SOUTH 5 TO 15 MPH.
- * WINDS...10000 FT MSL.....SOUTHWEST 10 TO 20 MPH.
- * CHANCE OF PRECIP.....0 PERCENT.
- * LAL.....1.

.MONDAY...

- * SKY/WEATHER.....SUNNY.
- * MAX TEMPERATURE.....106-111.
- * 24 HR TREND.....LITTLE CHANGE.
- * MIN HUMIDITY.....8-13 PCT.
- * 24 HR TREND.....LITTLE RH CHANGE.
- * WINDS - 20 FEET...SLOPE/VALLEY..SOUTHWEST 5 TO 15 MPH.
- * WINDS...10000 FT MSL.....SOUTHWEST 10 TO 20 MPH.
- * CHANCE OF PRECIP.....0 PERCENT.
- * LAL.....1.
- * HAINES HIGH LEVEL INDEX.....6 OR HIGH POTENTIAL FOR LARGE PLUME DOMINATED FIRE GROWTH.

SPOT FORECAST FOR SAWMILL...SAN CARLOS / CWZ IMT3
NATIONAL WEATHER SERVICE PHOENIX AZ
429 PM MST SAT JUN 20 2015

FORECAST IS BASED ON REQUEST TIME OF 1609 MST ON JUNE 20.
IF CONDITIONS BECOME UNREPRESENTATIVE...CONTACT THE NATIONAL WEATHER
SERVICE.

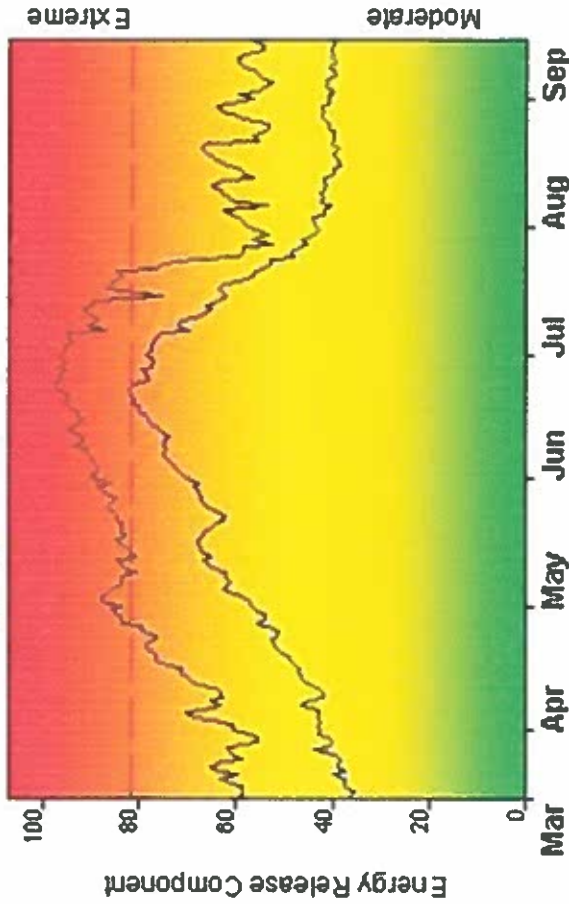
.DISCUSSION...
DRY AND VERY HOT WEATHER WILL CONTINUE THROUGH SUNDAY. MINIMUM
RELATIVE HUMIDITIES EARLY SATURDAY EVENING WILL BE IN THE
SINGLE DIGITS...INCREASING INTO THE 10 TO 15 PERCENT RANGE
SUNDAY. AFTERNOON SOUTHWEST UPSLOPE WINDS 10 TO 20 MPH
WILL DEVELOP EACH DAY.

.SUNDAY...

SKY/WEATHER.....MOSTLY SUNNY.
MAX TEMPERATURE.....92-96 DEGREES.
MIN HUMIDITY.....10-15 PCT.
WIND (20 FT).....NORTHWEST WINDS 6 TO 18 MPH WITH GUSTS TO
 AROUND 25 MPH.
CWR/POP(%).....0 PERCENT.

FIRE DANGER -- San Carlos High Country >5500'

Maximum, Average, and 90th Percentile, based on 11 years data



Extreme

Moderate

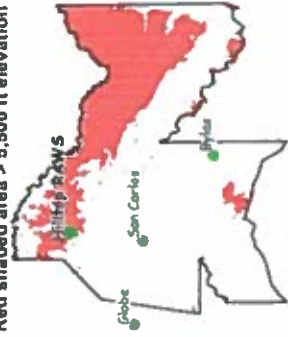
Fire Danger Area:

- San Carlos Apache Rez
- Fire Wx Zones 133 & 146
- Hilkop RAWWS 5720'
- * Meets NWCG Wx Station Standards

Fire Danger Interpretation:



- EXTREME** -- Use extreme caution
- (Caution)** -- Watch for change
- Moderate** -- Lower Potential, but always be aware



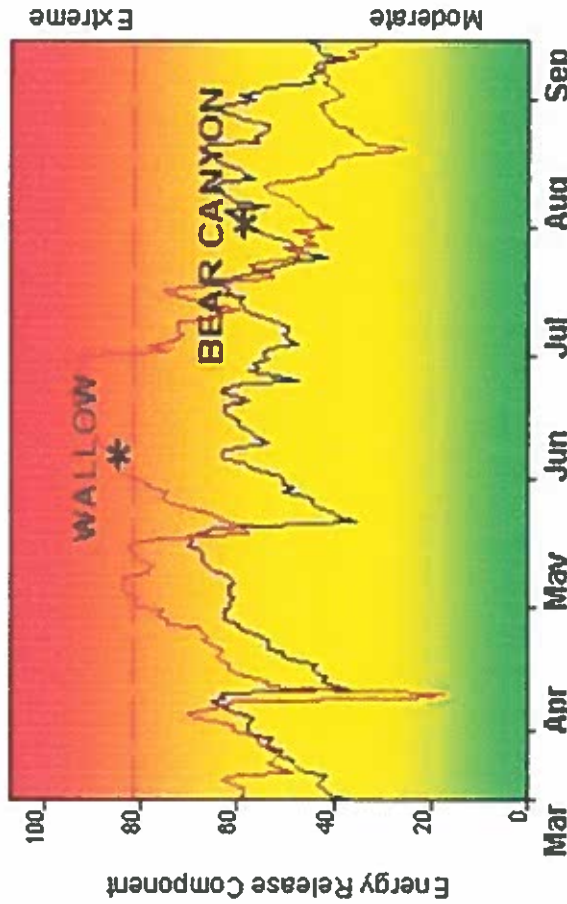
Maximum -- Highest Energy Release Component by day for 2000 - 2012

Average -- shows peak fire season over 11 years (1996 observations)
 90th Percentile -- Only 10% of the 1996 days from 2000 - 2012 had an Energy Release Component above 81

Local Thresholds - Watch out:

Combinations of any of these factors can greatly increase fire behavior:
 20' Wind Speed over 20 mph, RH less than 15%,
 Temperature over 85, Max RH less than 35

Years to Remember: 2009 2011



Extreme

Moderate

Remember what Fire Danger tells you:

- ✓ Energy Release Component gives seasonal trends calculated from 2 pm temperature, humidity, daily temperature & rh ranges, and precip duration.
- ✓ Wind is NOT part of ERC calculation.
- ✓ Watch local conditions and variations across the landscape -- Fuel, Weather, Topography.
- ✓ Listen to weather forecasts -- especially WIND.

Past Experience:

Oak, juniper, and brush species torch and spot readily in May/June with wind gusts > 20 mph. Continuous flashy fuels may exist in forestland woodland openings and increase ROS. Watch for poor overnight RH recovery.

Wallow Fire - May 29-June 26. 78,000 acre growth on June 7; 538,085 acres total Record-high Burning Index in May and June; ERC above 97th percentile for 22 days in a row.

Bear Canyon Fire - July 14-August 13. 20,029 acres. Began as a Resource-Benefit fire. Only moderate growth in July, then highest ever August ERC's.

Responsible Agency: Bureau of Indian Affairs - AZSCA
 FF+4.1 Beta 03/28/2012-08.37 (CAFFFDatabases\SCA FFP)

Fuel Model: G - Short-Needle (Heavy Dead)

Design by NWCG Fire Danger Working Team

Division Assignment List		1. Branch		2. Division/Group A			
3. Incident Name WHITETAIL FIRE		4. Operational Period 06/21/15 Sunday Day Shift 0630 - 2100					
5. Operations Personnel							
Operations Chief	James King			Division/Group Supervisor	Vanderhoeven/Quochytewa(t)		
Operations Chief				Air Attack Supervisor			
Branch Director				Safety Officer	TC SMITH		
6. Resources Assigned this Period							
Strike Team/Task Force/ Resource Designator	Leader	Num of Pers.	Trans. Y/N	Drop Off PT./Time	Pick Up PT./Time		
CREW - T1 - GERONIMO IHC	HOSTETLER, JULIUS	19	N				
CREW - T2IA -ZUNI	CHICO, GERALDINE	20	N				
ENGINE - T6 -TNF - E1266		5	N				
DOZER-T2 - SCA	DUSTIN CROMWELL	1					
GRADER - SCA	MELVIN KINDELAY	1					
HEQB - WATSON	WATSON, MICHAEL D	1	N				
HEQB (t) HUGHES	HUGHES, BRANDON C	1	N				
MEDIC - KENNEDY	BRENT KENNEDY	1	N				
MEDIC - FENTON	BRENDON FENTON	1	N				
7. Control Operations							
SECURE SLOP NORTH OF 1400 ROAD PREP AND HOLD 1400 ROAD PROGRESSING WEST							
8. Special Instructions							
9. Division/Group Communications Summary							
Function	Frequency - RX	Frequency - TX	Tone	System	Channel	System	Channel
Command	172.4250	166.2375	RX 151.4/TX 173.8	King	3		
Tactical Div/Group	168.2000	168.2000		King	7		
Tactical							
Air to Ground	169.1500	169.1500		NIFC	10		
Prepared by (Resource Unit Leader) LLIBBY REIMAN(t)		Approved by (Planning Section Chief) TODD BENTLEY			Date Prepared 06/20/15	Time Prepared 2100	

Division Assignment List	1. Branch	2. Division/Group M
---------------------------------	-----------	-------------------------------

3. Incident Name WHITETAIL FIRE	4. Operational Period 06/21/15 Sunday Day Shift 0630 - 2100
---	---

5. Operations Personnel			
Operations Chief	JIM KING	Division/Group Supervisor	KEOWN/JOHNSON(t)
Operations Chief		Air Attack Supervisor	
Branch Director		Safety Officer	ANDY MANDELL

6. Resources Assigned this Period					
Strike Team/Task Force/ Resource Designator	Leader	Num of Pers.	Trans. Y/N	Drop Off PT./Time	Pick Up PT./Time
T6 SCA ENG 5862		3	N		
T6 ENGINE 5865 SCA		3	N		

7. Control Operations HOLD 1500 ROAD HOLD 1200 ROAD UTILIZE FIRING OPERATIONS WHEN NECESSARY
--

8. Special Instructions

9. Division/Group Communications Summary							
Function	Frequency - RX	Frequency - TX	Tone	System	Channel	System	Channel
Command	172.4250	166.2375	RX151.4/ TX173.8	King	3		
Tactical Div/Group	168.7750	168.7750		KING	6		
Logistics							
Air to Ground	169.1500	169.1500		NIFC	10		
Prepared by (Resource Unit Leader) LIBBY REIMAN (t)				Approved by (Planning Section Chief) TODD BENTLEY		Date Prepared 06/20/15	Time Prepared 2102

Division Assignment List		1. Branch		2. Division/Group Z			
3. Incident Name WHITETAIL FIRE		4. Operational Period 06/21/15 Sunday Day Shift 0630 - 2100					
5. Operations Personnel							
Operations Chief	James King		Division/Group Supervisor		Jardine /Ben (t)		
Operations Chief			Air Attack Supervisor				
Branch Director			Safety Officer		Andy Mandell		
6. Resources Assigned this Period							
Strike Team/Task Force/ Resource Designator	Leader	Num of Pers.	Trans. Y/N	Drop Off PT./Time	Pick Up PT./Time		
CREW - T2IA - PIMA T2IA CREW	GABE O'KEEFE	20	N	TURKEY ROOST 0630	2100		
CREW - T2 - SAN CARLOS T2 CREW	WILLIAM HENSELY	20	N	TURKEY ROOST 0630	2100		
CREW - T2IA - SAN CARLOS T2IA	TOM PATTON	20	N	TURKEY ROOST 0630	2100		
T6 ENG- TONTO E-12-17	CHARLES KEOWN	7	N	TURKEY ROOST 0630	2100		
T6 ENG- TONTO E-12-35	BRAD CASTLE	8	N	TURKEY ROOST 0630	2100		
MEDIC - MILLICK	MILLICK, BRIAN DANIEL	1	N	TURKEY ROOST 0630	2100		
TFLD(t) PHILLIPS	JEFF PHILLIPS	1	N	TURKEY ROOST 0630	2100		
7. Control Operations FINISH PREP FROM DIVISION BREAK TO RED TANK PREPARE FOR FIRING OPERATIONS							
8. Special Instructions							
9. Division/Group Communications Summary							
Function	Frequency - RX	Frequency - TX	Tone	System	Channel	System	Channel
Command	172.4250	166.2375	RX 151.4/TX 186.2	King	4		
Tactical Div/Group	167.5500	167.5500		King	8		
Logistics							
Air to Ground	169.1250	169.1250		NIFC	9		
Prepared by (Resource Unit Leader) LIBBY REIMAN (t)		Approved by (Planning Section Chief) TODD BENTLEY			Date Prepared 06/20/15		Time Prepared 1240

AIR OPERATIONS SUMMARY (ICS 220)

1. Incident Name: White Tail and Sawmill Fires		2. Operational Period: Date From: 6/21/2015 Date To: 6/21/2015 Time From: 08:00 Time To: 19:00	
4. Remarks (safety notes, hazards, air operations special equipment, etc.): TFR Subject to change, New Fixed wing A/A freq		5. Ready Alert Aircraft: Medic: _____ New Incident: _____	
7. Personnel:		8. Frequencies:	9. Fixed-Wing (category/Kind/type, make/model, N#, base):
Air Operations Branch Director	Name: _____ Phone Number: XXX-XXX-XXXX	AM 118.1250	FM 169.1500 RX and Tx 169.1250 RX and TX
Air Support Group Supervisor	XXX-XXX-XXXX	Air/Air Rotary-Wing – Flight Following	123.850
Air Tactical Group Supervisor	XXX-XXX-XXXX	Air/Ground	White Tail Incident A/G 60
Helicopter Coordinator	XXX-XXX-XXXX	Take-Off & Landing Coordinator	Other Fixed-Wing Aircraft:
Helibase Manager	Robert Dodgen Rawley Holiday (T) 970-739-6744 970-739-9430	Air Guard	168.625 TX tone 110.9
10. Helicopters (use additional sheets as necessary):			
FAA N#	Category/Kind/Type	Make/Model	Base Available Start Remarks
618ME	Helicopter, Type 3	AS-350-B3	San Carlos 08:00 07:00
118MB	Helicopter, Type 3	AS-350-B3	San Carlos 08:00 07:00

3. Basic Radio Channel Utilization

Radio Type	Channel	Function	Frequency/Tone		Assignment	Remarks
NIFC	1	TAC 6	RX 168.600	TX 168.600	Sawmill	
King	2	Fire Net PINL	RX 172.4250	TX 166.2375		
			RX 151.4 / TX 162.2			
King	3	Fire Net Hilltop	RX 172.4250	TX 166.2375	Whitetail Command	
			RX 151.4 / TX 173.8			
King	4	Fire Net Old Summit	RX 172.4250	TX 166.2375	Sawmill Command	
			RX 151.4 / TX 186.2			
King	5	Fire Net Mav	RX 172.4250	TX 166.2375		
			RX 151.4 / TX 151.4			
KING	6	TAC 3	RX 168.7750	TX 168.7750	Division M	
King	7	TAC 4	RX 168.2000	TX 168.2000	Division A	
King	8	TAC 5	RX 167.5500	TX 167.5500	Division Z	
NIFC	9	Air/Ground 60	RX 169.1250	TX 169.1250	Initial Attack	
NIFC	10	Whitetail A/G	RX 169.1500	TX 169.1500	Whitetail Sawmill	
King	11	Mutual Aid	RX 154.2800	TX 154.2800		
King	12	TAC 2	RX 168.6750	TX 168.6750	Initial Attack	
King	13	Admin Pinal	RX 171.7000	TX 166.3750		
			RX 151.4 / TX 162.2			
King	14	Admin Hilltop	RX 171.7000	TX 166.3750		
			RX 151.4 / TX 173.8			
King	15	Admin Old Summit	RX 171.7000	TX 166.3750		
			RX 151.4 / TX 186.2			
King	16	Portable Repeater	RX 171.1625	TX 166.2375		
			RX 69.3 / TX 69.3			

MEDICAL PLAN (ICS 206 WF)

1. Incident/Project Name		2. Operational Period						
Whitetail / Sawmill		Date/Time 06/21/2015						
3. Ambulance Services								
Name	Complete Address	Phone & EMS Frequency	Advanced Life Support (ALS) Yes No					
EMS Peridot, Primary.	Station 1, Peridot	(928)475-2838 EMS Dispatch (928)475-2388	X					
EMS Bylas	Station 2, Bylas	(928) 475-6444	X					
EMS San Carlos, Secondary	Station 3, San Carlos	(928) 475-5010	X					
4. Air Ambulance Services								
Name	Phone	Type of Aircraft & Capability						
Native American Air Ambulance 5	800-806-7106	Bell 205						
DPS Ranger –Bell 407	602-223-2208 EMSCOM	Short Haul Capable/ Night Vision Goggles						
5. Hospitals								
Name Complete Address	GPS Datum – WGS 84 Coordinate Standard Degrees Decimal Minutes DD° MM.MMM' N - Lat DD° MM.MMM' W - Long		Travel Time Air Gnd		Phone	Helipad Yes No		Level of Care Facility
	Lat:	Long:						
Arizona Burn Center at Maricopa Medical Center 2601 E. Roosevelt PHX, AZ 85008	N 33 27.4	W 112 01.6	45.	3HR	602-344-5726	X	<input type="checkbox"/>	Burn Center
Scottsdale Osborn Trauma Center. 7400 E. Osborn Scottsdale, AZ 85251	N 33 29.33	W 111 55.3	45	3HR	480-675-4810	X	<input type="checkbox"/>	Honor Health Level 1 trauma
San Carlos HIS 208 Cibique Cir San Carlos AZ	N 33 21 254	W 110 27. 286	30	1.5 HR	928-475-2371 ER 475-7315	X	<input type="checkbox"/>	Level 4
Cobre Valley Regional Center 5880 S. Hospital Dr. Globe, AZ	N 33 24 828	W 110 49. 722	30	2 HR	928-425-3261	X	<input type="checkbox"/>	Level 3
6. Division Branch Group			Area Location Capability					
Phillips Park			EMS Responders & Capability:		TBD			
			Equipment Available on Scene:					
			Medical Emergency Channel:					
			ETA for Ambulance to Scene:					
			Air:					
			Ground:					
			Approved Helispot:		Medivac Helispot			
			Lat:		N. 110 13 53.134			
			Long:		W 33 37 29.59			
			EMS Responders & Capability:					
Equipment Available on Scene:								
Medical Emergency Channel:		Command						

MEDICAL PLAN (ICS 206 WF)

	ETA for Ambulance to Scene:	Spike West
	Air:	
	Ground:	
	Approved Helispot:	
	Lat:	N 33 34.948
	Long:	W 110 19.202

7. Name & Location	Remote Camp Location(s)		
Turkey Roost	Point of Contact:	Brent Fenton 602-618-1917 Randy Kennedy 623-776-5570	
	EMS Responders & Capability:	ALS/BLS	
	Equipment Available on Scene:		
	Medical Emergency Channel:		
	ETA for Ambulance to Scene:		
	Air:		
	Ground:		
	Approved Helispot:	Yes Medivac Helispot	
	Lat:	N 110 9 1.804	
	Long:	W 33 32 37.731	
Baskin Tank	Point of Contact:	TBD	
	EMS Responders & Capability:	TBD	
	Equipment Available on Scene:		
	Medical Emergency Channel:		
	ETA for Ambulance to Scene:		
	Air:		
	Ground:		
	Approved Helispot:	Medivac Helispot	
	Lat:	N 110 10 16.685	
	Long:	W 33 37 25.572	
8. Prepared By (Medical Unit Leader)	9. Date/Time	10. Reviewed By (Safety Officer)	11. Date/Time
	6/20/15 2150	Andrew Mandell	6/20/15 2200

Incident Commander of the Medical Emergency will contact Phoenix Dispatch directly on the Command Repeater appropriate to the area and follow the Medical Incident Report format to relay information.

Nearest Safety Officer will respond to the Emergency to secure the scene and conduct any needed investigation.

MEDICAL PLAN (ICS 206 WF)

Medical Incident Report

FOR ALL MEDICAL EMERGENCIES: IDENTIFY ON SCENE INCIDENT COMMANDER BY NAME AND POSITION AND ANNOUNCE "MEDICAL EMERGENCY" TO INITIATE RESPONSE FROM IMT COMMUNICATIONS/DISPATCH.

Use items one through nine to communicate situation to communications/dispatch.

1. CONTACT COMMUNICATIONS/DISPATCH

Ex: "Communications, Div. Alpha. Stand-by for Priority Medical Incident Report." (If life threatening request designated frequency be cleared for emergency traffic.)

2. INCIDENT STATUS: Provide incident summary and command structure.

Nature of Injury/Illness		<i>Describe the injury (Ex: Broken leg with bleeding)</i>
Incident Name		<i>Geographic Name + "Medical" (Ex: Trout Meadow Medical)</i>
Incident Commander		<i>Name of IC</i>
Patient Care		<i>Name of Care Provider (Ex: EMT Smith)</i>

3. INITIAL PATIENT ASSESSMENT: Complete this section for each patient. This is only a brief, initial assessment. Provide additional patient info after completing this 9 Line Report.

Number of Patients:	Male / Female	Age:	Weight:
Conscious? <input type="checkbox"/> YES <input type="checkbox"/> NO = MEDEVAC!			
Breathing? <input type="checkbox"/> YES <input type="checkbox"/> NO = MEDEVAC!			
Mechanism of Injury: <i>What caused the injury?</i>			
Lat/Long (Datum WGS84) <i>Ex: N 40° 42.45' x W 123° 03 24'</i>			

4. SEVERITY OF EMERGENCY, TRANSPORT PRIORITY

SEVERITY	TRANSPORT PRIORITY
<input type="checkbox"/> URGENT-RED Life threatening injury or illness. <i>Ex: Unconscious, difficulty breathing, bleeding severely, 2° - 3° burns more than 4 palm sizes, heat stroke, disoriented.</i>	Ambulance or MEDEVAC helicopter. Evacuation need is IMMEDIATE .
<input type="checkbox"/> PRIORITY-YELLOW Serious Injury or illness. <i>Ex: Significant trauma, not able to walk, 2° - 3° burns not more than 1-2 palm sizes.</i>	Ambulance or consider air transport if at remote location. Evacuation may be DELAYED .
<input type="checkbox"/> ROUTINE-GREEN Not a life threatening injury or illness. <i>Ex: Sprains, strains, minor heat-related illness.</i>	Non-Emergency. Evacuation considered Routine of Convenience .

5. TRANSPORT PLAN:

Air Transport: (Agency Aircraft Preferred)

<input type="checkbox"/> Helispot	<input type="checkbox"/> Short-haul/Hoist	<input type="checkbox"/> Life Flight	<input type="checkbox"/> Other
Ground Transport:			
<input type="checkbox"/> Self-Extract	<input type="checkbox"/> Carry-Out	<input type="checkbox"/> Ambulance	<input type="checkbox"/> Other

6. ADDITIONAL RESOURCE/EQUIPMENT NEEDS:

<input type="checkbox"/> Paramedic/EMT(s)	<input type="checkbox"/> Crew(s)	<input type="checkbox"/> SKED/Backboard/C-Collar
<input type="checkbox"/> Burn Sheet(s)	<input type="checkbox"/> Oxygen	<input type="checkbox"/> Trauma Bag
<input type="checkbox"/> Medication(s)	<input type="checkbox"/> IV/Fluid(s)	<input type="checkbox"/> Cardiac Monitor/AED
<input type="checkbox"/> Other (i.e. splints, rope rescue, wheeled litter)		

7. COMMUNICATIONS:

Function	Channel Name/Number	Receive (Rx)	Tone/NAC *	Transmit (Tx)	Tone/NAC *
<i>Ex: Command</i>	<i>Forest Rpt. Ch. 2</i>	<i>168.3250</i>	<i>110.9</i>	<i>171.4325</i>	<i>110.9</i>
COMMAND					
AIR-TO-GRND					
TACTICAL					

*(NAC for digital radio system)

8. EVACUATION LOCATION:

Lat/Long (Datum WGS84) <i>EX: N 40 42.45' x W 123 03 24'</i>	
---	--

Considerations: *If primary options fail, what actions can be implemented in conjunction with primary evacuation method? Be thinking ahead...*

REMEMBER: Confirm ETA's of resources ordered
Act according to your level of training
Be Alert. Keep Calm. Think Clearly. Act Decisively.

HEALTH AND SAFETY MESSAGE

SAFETY starts with *YOU*

We are ALL accountable for SAFE behaviors

INCIDENT: WHITETAIL/SAWMILL

DATE: 06/20/15

Time Prepared 2000

Major Hazards and Risks:

Fire Order of the Day – Initiate all actions based on current weather and expected fire behavior

Narrative: Strong winds shifting , and time of day dry conditions . Heating at noon making condition of fire to move fast . Lots dry fuels making fire move quick from winds shifts or pushing .

Dehydration

Water is best –Drink a little often rather than a lot infrequently. When taken break drink some or on Breaks . Even you think you don't need it do drink it. Weather hot working you sweating losing water your body need replacement of fluids put back in . THINK SAFTEY

Watch Out Situation of the Day



Look Up, Look Down, Look Around

***Look Up:** Check the sky for any weather changes such as building or approaching thunderstorms, wind shifts or increasing in speed. Watch for air operations and water drops. Look for snags.

***Look Down:** Watch your footing. Keep an eye out for snakes, bees nests and observe fine fuels on the ground.

* **Look Around** Check fuel loading in the area, general terrain, current fire behavior and ladder fuels. Keep an eye on fellow firefighters for signs of heat stress and smoke inhalation.

11. UNBURNED FUEL BETWEEN YOU AND THE FIRE

CWZ Field Ordering

#1 Spike Camp for 22 people for 24 hrs

- 14- QB's (full), 7- Cases MRE, 1- Brick AA, 3- Rolls Fiber Tape, 3- Rolls Pink Flagging, 3- Rolls Toilet Paper, 5- Gallon Unleaded, 5- 2 cycle Oil, 12- qts Bar Oil, 1- bx Trash Bags,

#2 Hose Lay- 1000' trunk with laterals

- 10- 1 ½" Hose, 5- 1" Hose, 5- 1 ½" Gated Wye, 5- 1 ½" Reducer, 1- Hose Clamp, 5- 1" Nozzle

#3 Mop-up Hose Kit- 1000'

- 5- 1" Hose, 10- ¾" hose, 5- 1" Gated Wye, 5- 1" Reducer, 5- ¾" Nozzle, 5- ¾" Gated Wye, 5- ¾" Shutoff

Item	NFES#	Item	NFES#	Item	NFES#
Combi	#1180	Bastard File (box)	#0060	Body Fluid Barrier Kits	#0640
Felling Axe	#0352	Batteries AA	#0030	Escape Route	#0566
McCloed	#0296	Batteries D	#0033	Killer Tree	#6066
Pulaski	#0146	Belt Weather Kit	#1050	Pink	#2401
Rake Monkey	#0659	Ear Plugs	#1027	Yellow/black	#0267
Shovel	#0171	First Aid Kits	#0067	QB's	#0048
¾" Hose	#1016	First Aid Kits (10)	#1143	Duct Tape	#0396
1" Hose	#1238	Gloves (m)	#1295	Fiber Tape	#0222
1 1/2" Hose	#1239	Gloves (s)	#1294	P-Cord	#0533
1 1/2" Draft Hose	#0115	Gloves (L)	#1296	1 1/2" - 1" Reducer	#0418
O-Rings Misc	#0743	Gloves (xl)	#1297	1 1/2" Bleeder Valve	#0230
1" Forester Nozzle	#0024	MRE	#1842	1 1/2" Double Female	#0857
Hose Clamp	#0046	Sleeping Pad Foam	#1566	1 1/2" Double Male	#0856
Spanner Wrench	#0235	Tent Tarps	#1521	1 1/2" Fog Nozzle	#1082
¾" - 1" Inreaser	#2235	Water Bottles	#0037	1 1/2" Foot Valve	#0212
¾" Gated Y	#0272	1" Double Female	#0710	1 1/2" Gated Y	#0231
¾" Nozzle	#0136	1" Double Male	#0916	1 1/2" Inline T	#0731
¾" Shut off	#0738	1" Gated Y	#0259		
1" - ¾" Reducer	#0733	1" Inline T	#1809		
1" Barrel Nozzle	#1081	1" Shut-off Valve	#1201		

Fireline Supply Orders

All supply orders from the fireline will be placed by Division/Group Supervisors through the Communications Unit with the following information:

- Use the division designator and the sequential order number (Example: the third order from Division B would be B-3)
- Item description and quantity (utilized the CWZ Line-Supply Order Form)
- Delivery method (air/ground)
- Time needed (avoid ASAP time frames)
- Delivery point - coordinates (dd*mm.mm' x ddd*mm.mm') or drop point number
- Contact person and Channel to contact them
- Fireline orders should be consolidated as much as possible and requests should be made with an expected delivery time of 2 hours if the item(s) is on hand
- If an item is critical, indicate at time of order

THE TIMEKEEPING DAILY NEWS

Whitetail/Sawmill Fires

For Sunday, June 21st

REMINDERS:

- Please write legibly on CTRs and shift tickets
- Please note on your CTR if you are a trainee
- Review CTRs and shift tickets before submitting to supervisors for signature! Don't forget the date!!
- Supervisors, please double check paperwork for accuracy especially dates! If your signature is illegible, please print your name above it so we can find you if we have questions.
- **CREW LEADERS:** Please use the remarks section of the CTR to note anything special or changes to your crew, i.e. travel time, injuries, member replacements, etc.

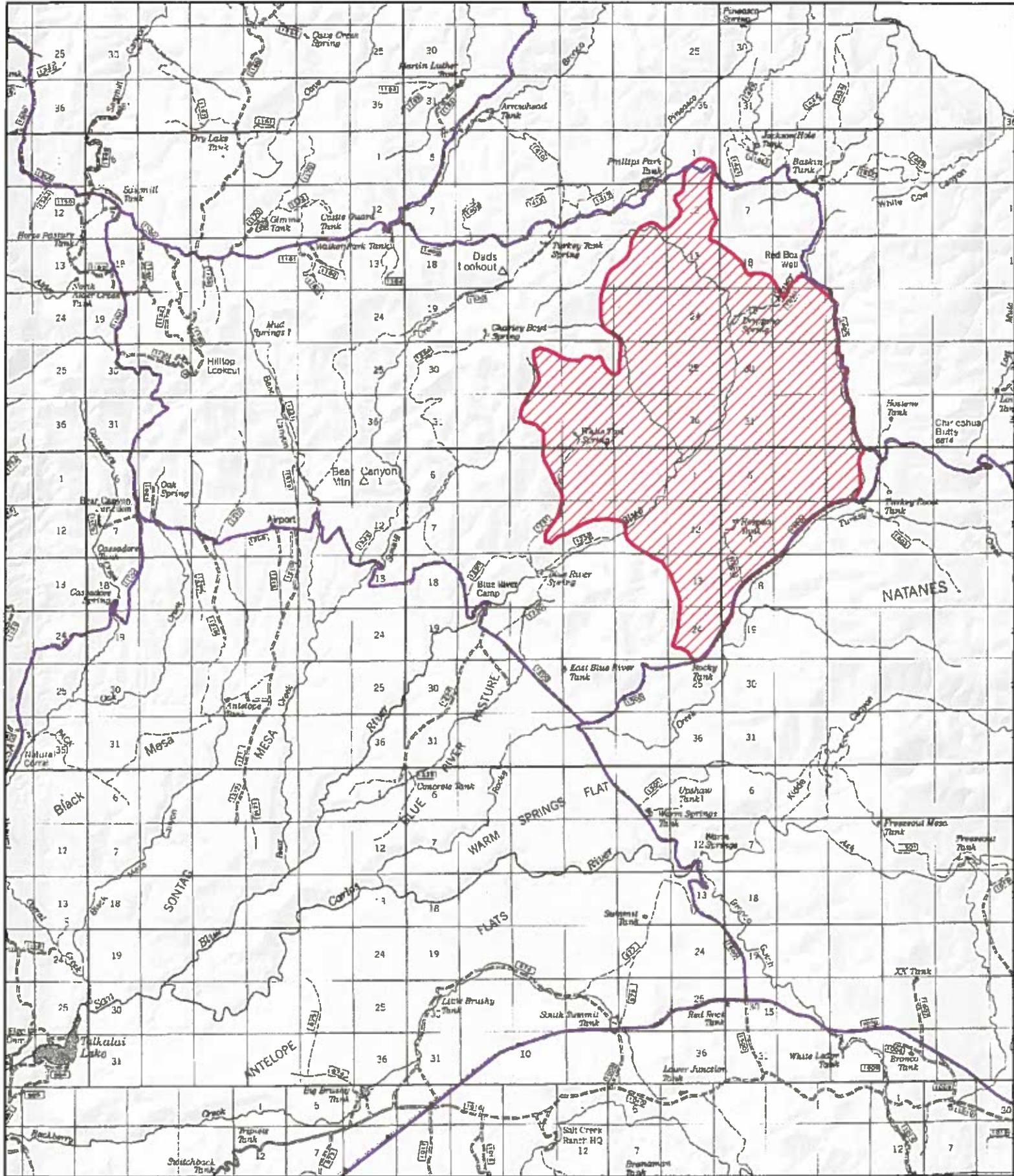
CURRENT NEEDS:

- GERONIMO HOTSHOTS: Need crew manifest. Please note any ADs and include Casual Hire form if applicable.
- PIMA T2 #1 and SAN CARLOS T2 #1 AND #2: Need crew manifests to include ECI numbers if don't have Casual Hire forms for each person.

PLEASE PUT CREW TIME REPORTS, EQUIPMENT SHIFT TICKETS AND ANY OTHER FINANCE RELATED DOCS IN THE BOX PROVIDED TO BE PICKED UP EACH MORNING AFTER BRIEFING!!

THANK YOU!

Penny Foreman, Finance



WHITETAIL FIRE
JUNE 20, 2015 1800
19,910 acres



