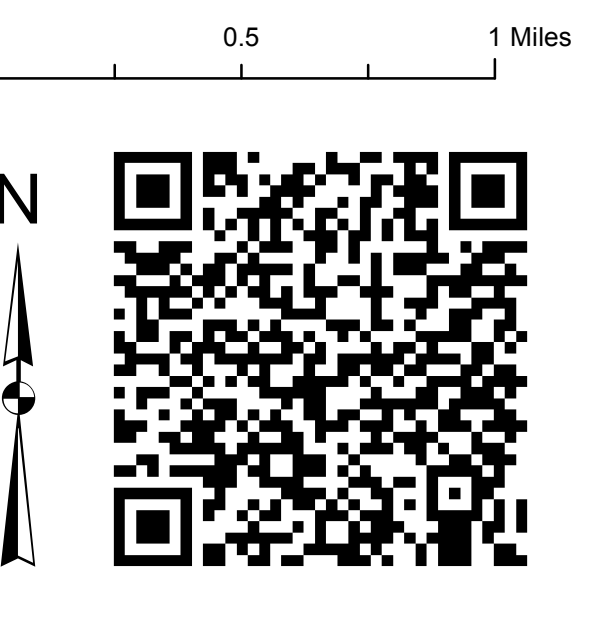
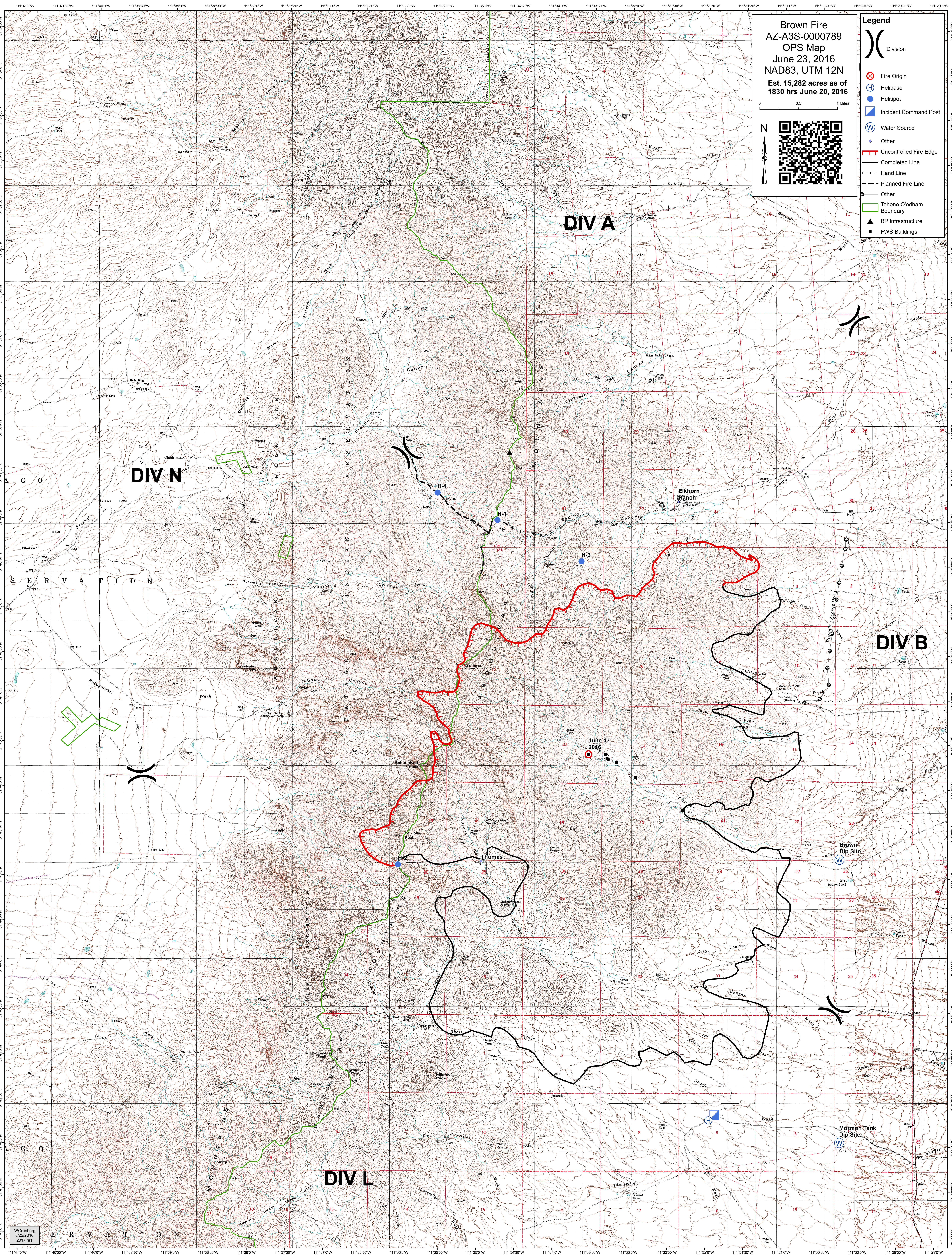


Brown Fire
AZ-A3S-0000789
OPS Map
June 23, 2016
NAD83, UTM 12N
Est. 15,282 acres as of
1830 hrs June 20, 2016



- Legend**
- () Division
 - ⊗ Fire Origin
 - ⊕ Helibase
 - Helispot
 - ⬠ Incident Command Post
 - ⊙ Water Source
 - Other
 - Uncontrolled Fire Edge
 - Completed Line
 - - - Hand Line
 - - - Planned Fire Line
 - Other
 - ▭ Tohono O'odham Boundary
 - ▲ BP Infrastructure
 - FWS Buildings



WGruberg
6/22/2016
2017 hrs