

Planning Map

Cowboy Fire

AZ-COF-357

28-May-2016



0 0.5 1
Miles



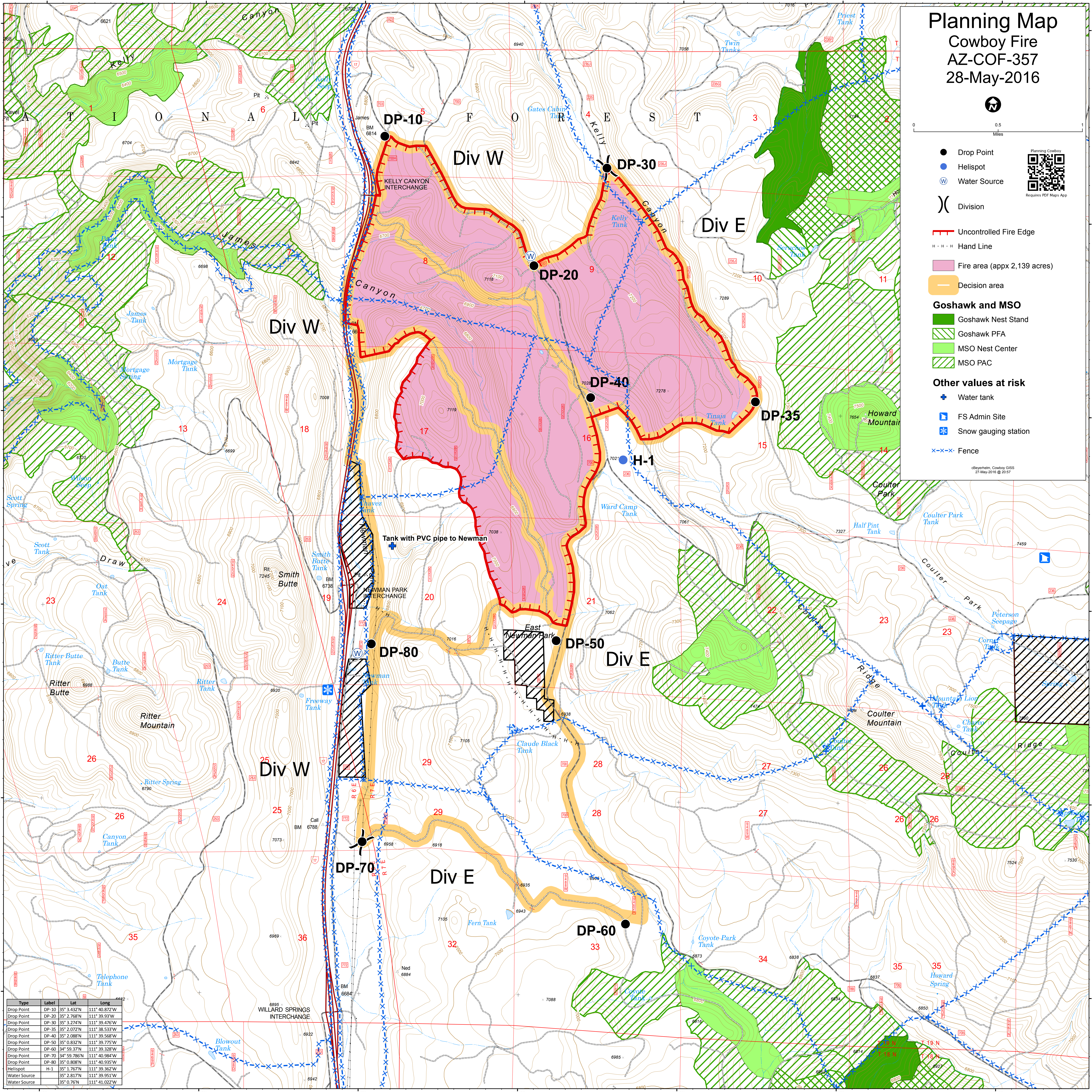
- Drop Point
- Helispot
- W Water Source
-) Division

- Uncontrolled Fire Edge
- H · H · H Hand Line
- Fire area (appx 2,139 acres)
- Decision area

- #### Goshawk and MSO
- Goshawk Nest Stand
 - Goshawk PFA
 - MSO Nest Center
 - MSO PAC

- #### Other values at risk
- Water tank
 - FS Admin Site
 - Snow gauging station
 - Fence

clayhain, Cowboy GIS
27-May-2016 @ 20:57



Type	Label	Lat	Long
Drop Point	DP-10	35° 3.432'N	111° 40.872'W
Drop Point	DP-20	35° 2.768'N	111° 39.93'W
Drop Point	DP-30	35° 3.274'N	111° 39.476'W
Drop Point	DP-35	35° 2.072'N	111° 38.533'W
Drop Point	DP-40	35° 2.088'N	111° 39.568'W
Drop Point	DP-50	35° 0.832'N	111° 39.775'W
Drop Point	DP-60	34° 59.37'N	111° 39.328'W
Drop Point	DP-70	34° 59.786'N	111° 40.584'W
Drop Point	DP-80	35° 0.806'N	111° 40.935'W
Helispot	H-1	35° 1.767'N	111° 39.362'W
Water Source		35° 2.817'N	111° 39.951'W
Water Source		35° 0.76'N	111° 41.022'W