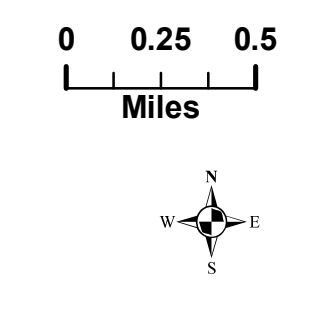


# BRIEFING COYOTE FIRE

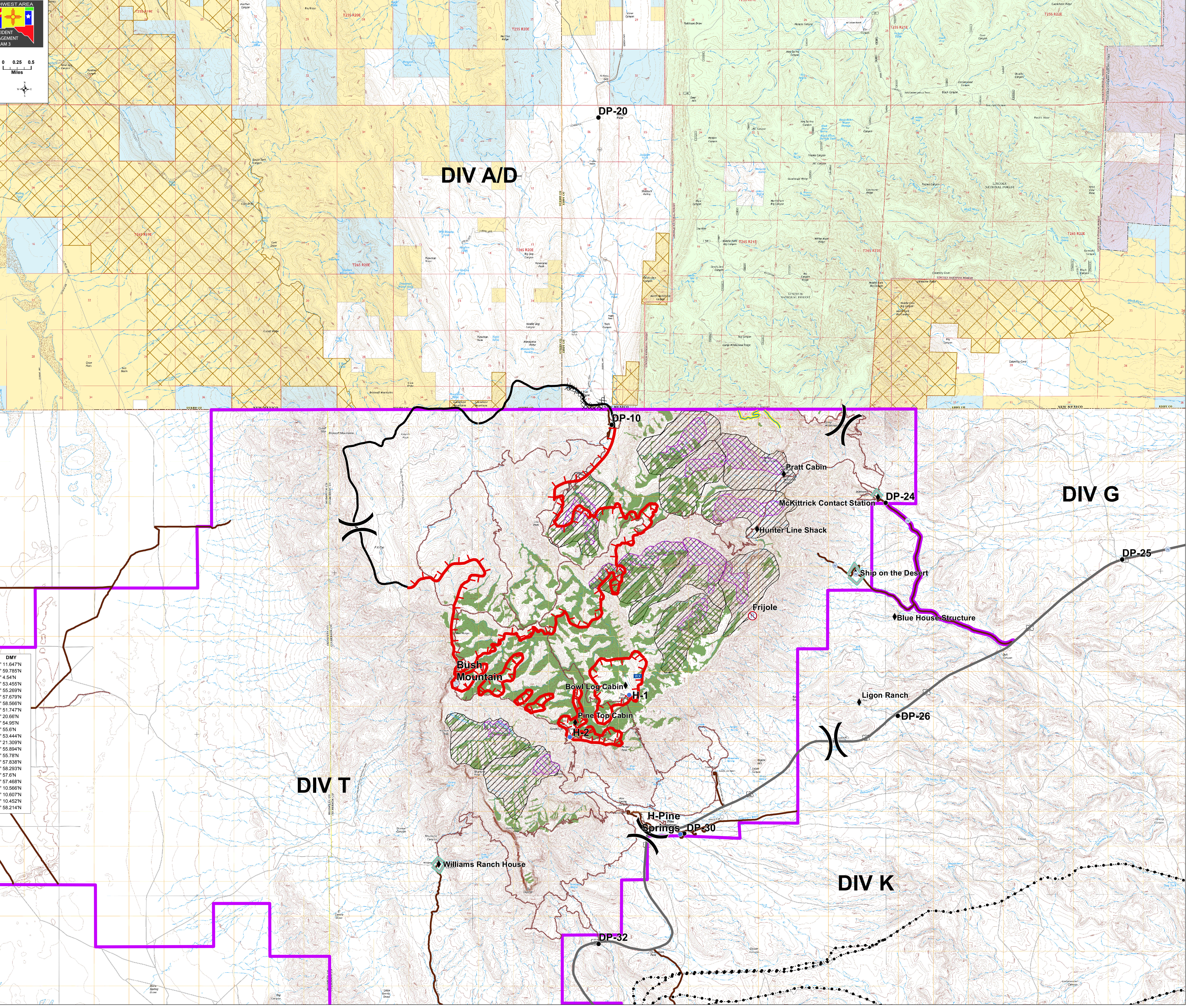
TX-GUP-00028  
Day Operational Period  
05/14/2016

10,939 GIS ACRES  
GPS Collected:  
May 14, 2016 @ 1330 hrs  
Map created 5/14/2016 2105 hrs - KLG



- Division
- NPS Drivable Roads
- Trails Official
- Permanent Stream:  
 Endangered.  
 No retardant.  
Avoid sedimentation.
- Pipelines
- Completed Dozer Line
- Completed Line
- Uncontrolled Fire Edge
- Prep Line
- Drop Point
- Helispot
- VALUES AT RISK**  
 Mobile Weather Unit
- Repeater
- Water Source
- Repeater - Non USE
- Buildings
- Owl - Core
- Owl PAC
- Mixed Conifer
- Ownership
- BLM
- FS
- NPS
- Private
- State
- BLM\_WSAs
- Guadalupe Mtn NP

T	Label	DMX	DMY
Camp	Queen Spike	104° 44.343'W	32° 11.647'N
Drop Point	DP-10	104° 49.963'W	31° 59.785'N
Drop Point	DP-20	104° 50.193'W	32° 4.54'N
Drop Point	DP-30	104° 48.655'W	31° 53.455'N
Drop Point	DP-26	104° 44.776'W	31° 55.269'N
Drop Point	DP-25	104° 40.695'W	31° 57.679'N
Drop Point	DP-24	104° 44.987'W	31° 58.566'N
Drop Point	DP-32	104° 50.213'W	31° 51.747'N
Helibase	Greenbase	104° 15.21'W	32° 20.66'N
Helispot	H-2	104° 50.73'W	31° 54.93'N
Helispot	H-1	104° 49.652'W	31° 55.6'N
Helispot	H-Pine Springs	104° 48.728'W	31° 53.444'N
Incident Command Post	ICP	105° 54.756'W	32° 21.309'N
Mobile Weather Unit		104° 49.492'W	31° 55.894'N
Repeater	Bush Mountain	104° 52.785'W	31° 55.78'N
Water Source		104° 39.967'W	31° 57.838'N
Water Source		104° 44.586'W	31° 58.293'N
Water Source		104° 45.914'W	31° 57.6'N
Water Source		104° 45.53'W	31° 57.468'N
Water Source		104° 22.627'W	32° 10.566'N
Water Source		104° 22.485'W	32° 10.607'N
Water Source		104° 22.535'W	32° 10.452'N
Water Source		104° 38.174'W	31° 58.214'N



DIV A/D

DIV G

DIV T

DIV K