

COYOTE FIRE FIRE PROGRESSION

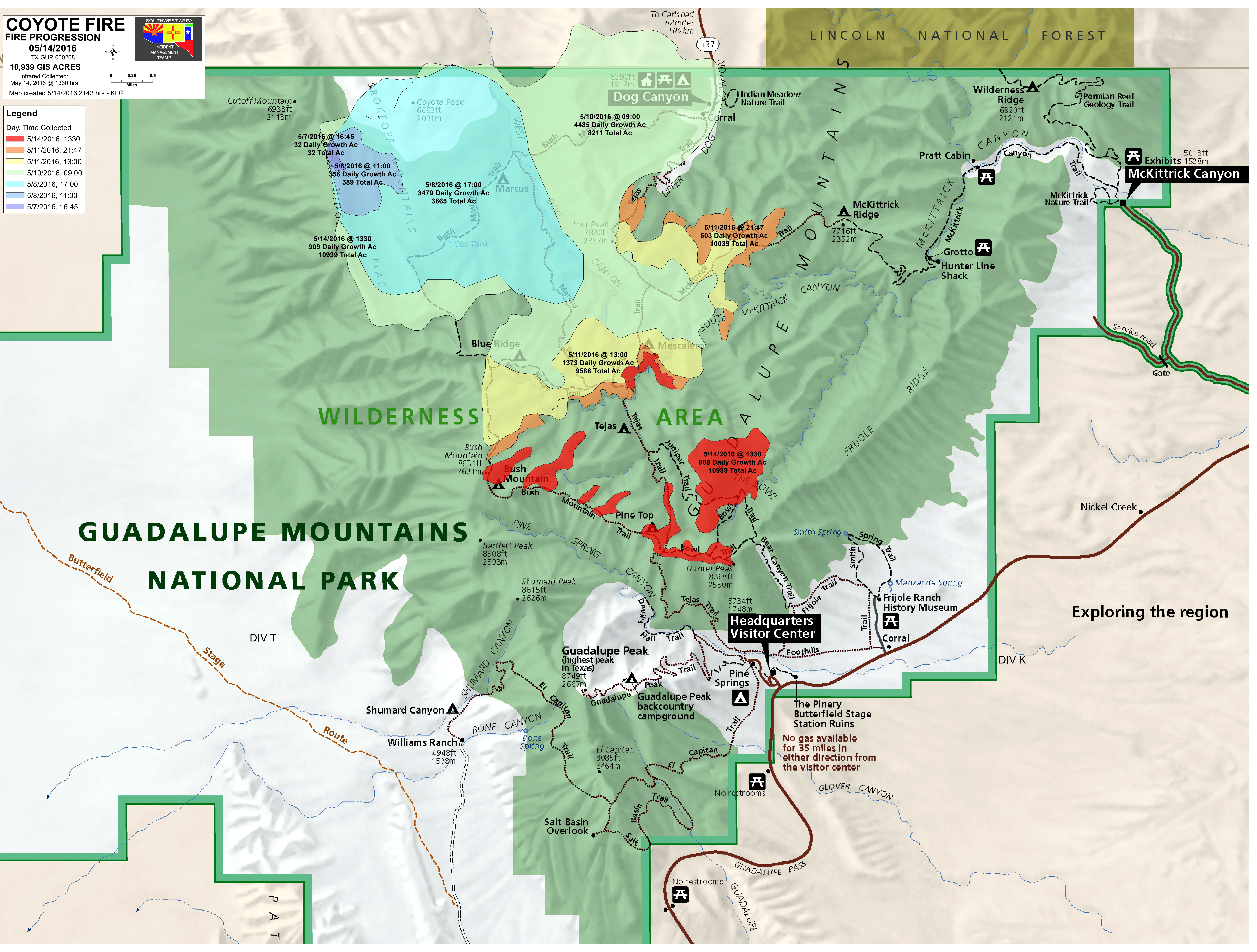
05/14/2016
TX-GUP-000208
10,939 GIS ACRES
Infrared Collected:
May 14, 2016 @ 1330 hrs
Map created 5/14/2016 2143 hrs - KLG



Legend

Day, Time Collected

5/14/2016, 1330
5/11/2016, 21:47
5/11/2016, 13:00
5/10/2016, 09:00
5/8/2016, 17:00
5/8/2016, 11:00
5/7/2016, 16:45



GUADALUPE MOUNTAINS NATIONAL PARK

WILDERNESS AREA

LINCOLN NATIONAL FOREST

Exploring the region

No restrooms

The Pinery
Butterfield Stage
Station Ruins
No gas available
for 35 miles in
either direction from
the visitor center

Headquarters
Visitor Center

Exhibits

Dog Canyon

McKittrick Canyon

Wilderness Ridge

McKittrick Ridge

Grotto

Hunter Line Shack

5/10/2016 @ 09:00
4485 Daily Growth Ac
8211 Total Ac

5/11/2016 @ 21:47
503 Daily Growth Ac
10039 Total Ac

5/11/2016 @ 13:00
1373 Daily Growth Ac
9586 Total Ac

5/14/2016 @ 1330
909 Daily Growth Ac
10939 Total Ac

5/7/2016 @ 16:45
32 Daily Growth Ac
32 Total Ac

5/8/2016 @ 11:00
356 Daily Growth Ac
389 Total Ac

5/8/2016 @ 17:00
3479 Daily Growth Ac
3865 Total Ac

5/14/2016 @ 1330
909 Daily Growth Ac
10939 Total Ac

Bush Mountain

Guadalupe Peak
(highest peak in Texas)

Williams Ranch

Guadalupe Peak
backcountry
campground

Salt Basin
Overlook

The Pinery
Butterfield Stage
Station Ruins

No gas available
for 35 miles in
either direction from
the visitor center

No restrooms

No restrooms

Exhibits

Dog Canyon

McKittrick Canyon

Wilderness Ridge

McKittrick Ridge

Grotto

Hunter Line Shack

5/10/2016 @ 09:00
4485 Daily Growth Ac
8211 Total Ac

5/11/2016 @ 21:47
503 Daily Growth Ac
10039 Total Ac

5/11/2016 @ 13:00
1373 Daily Growth Ac
9586 Total Ac

5/14/2016 @ 1330
909 Daily Growth Ac
10939 Total Ac

5/7/2016 @ 16:45
32 Daily Growth Ac
32 Total Ac

5/8/2016 @ 11:00
356 Daily Growth Ac
389 Total Ac

5/8/2016 @ 17:00
3479 Daily Growth Ac
3865 Total Ac

5/14/2016 @ 1330
909 Daily Growth Ac
10939 Total Ac

Bush Mountain

Guadalupe Peak
(highest peak in Texas)

Williams Ranch

Guadalupe Peak
backcountry
campground

Salt Basin
Overlook

The Pinery
Butterfield Stage
Station Ruins

No gas available
for 35 miles in
either direction from
the visitor center

No restrooms

No restrooms

Exhibits