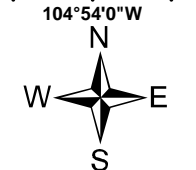
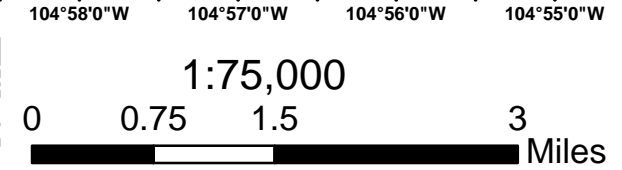
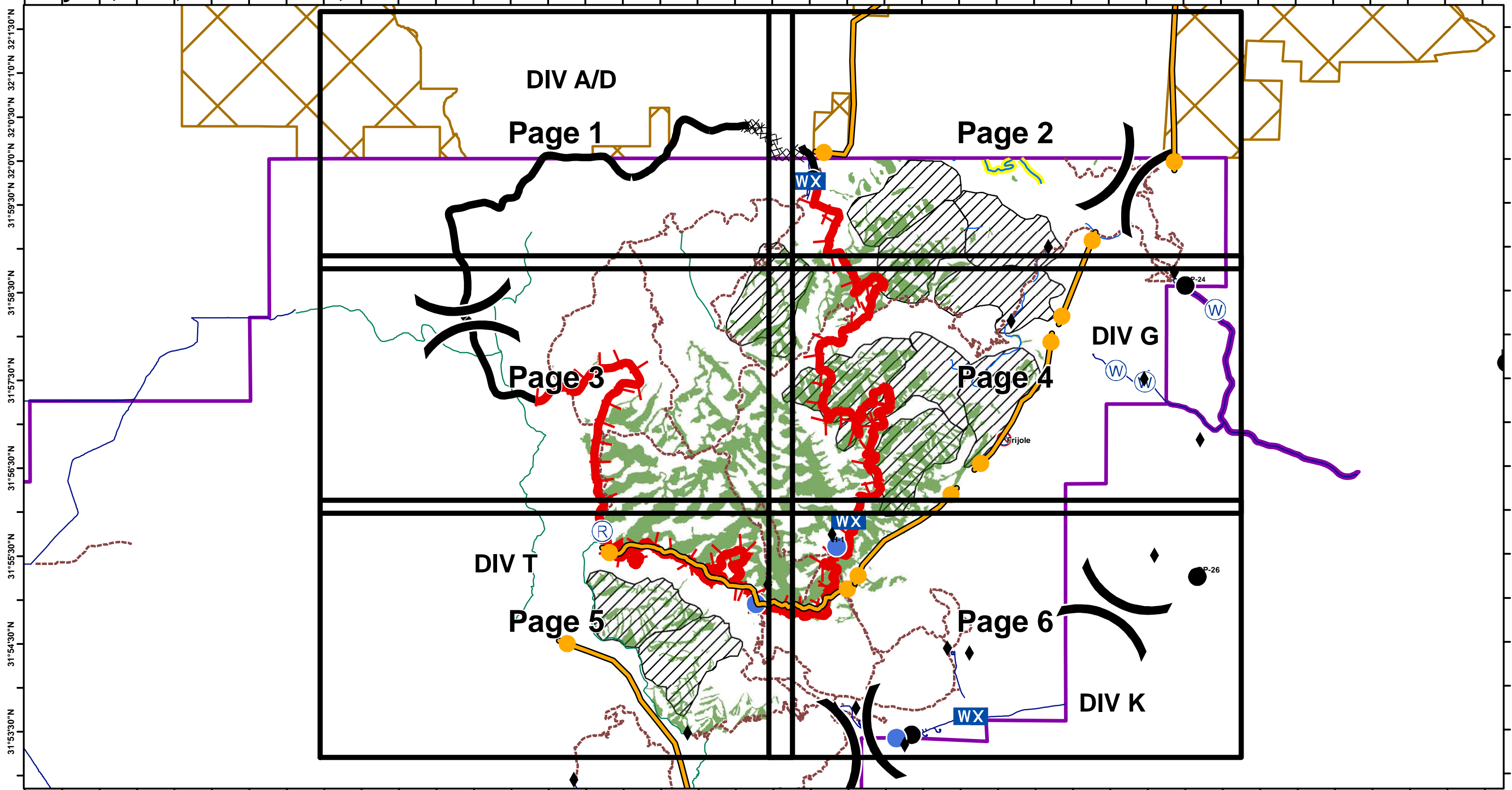


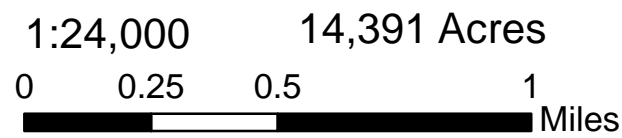
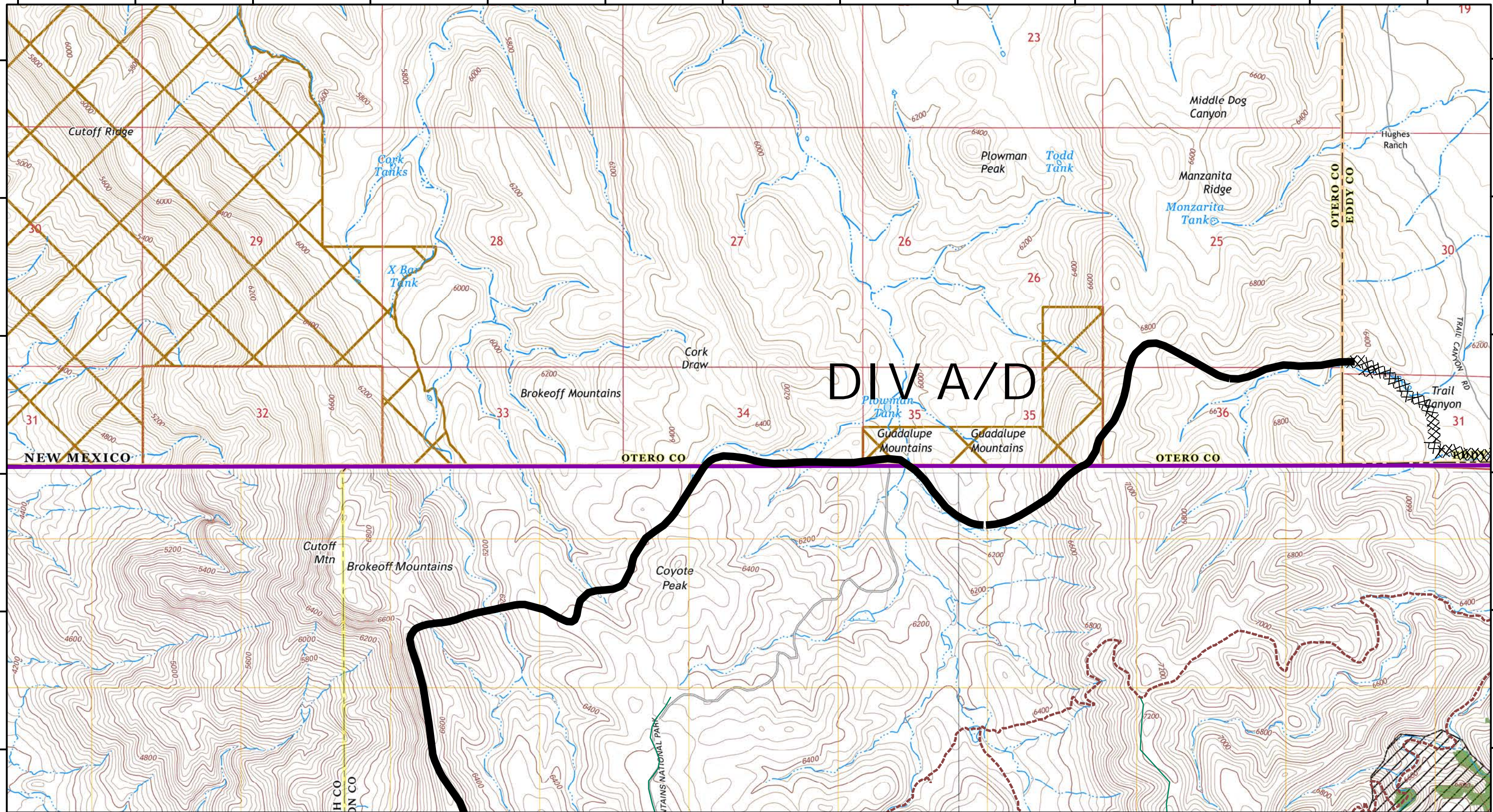
IAP Coyote Fire

May 27, 2016; 0600 Hrs: 14,351 Acres

TX-GUP-000208



- | | | | | | |
|------------------------|---------------------|--------------------|---------------------|---------------------------------|---------------|
| Division | Drop Point | Water Source | M.A.P. | Permanent Stream | Mixed Conifer |
| Uncontrolled Fire Edge | Helispot | Repeater - Non USE | Driveable Roads | Permanent Stream - NO retardant | Owl PAC |
| Completed Dozer Line | Mobile Weather Unit | vars | Non Driveable Roads | Guadalupe Mtn NP | |
| Completed Line | Repeater | | Trails Official | BLM Land | |



- () Division
- Uncontrolled Fire Edge
- Completed Dozer Line
- Completed Line

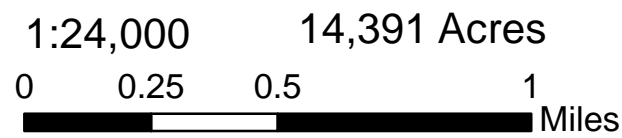
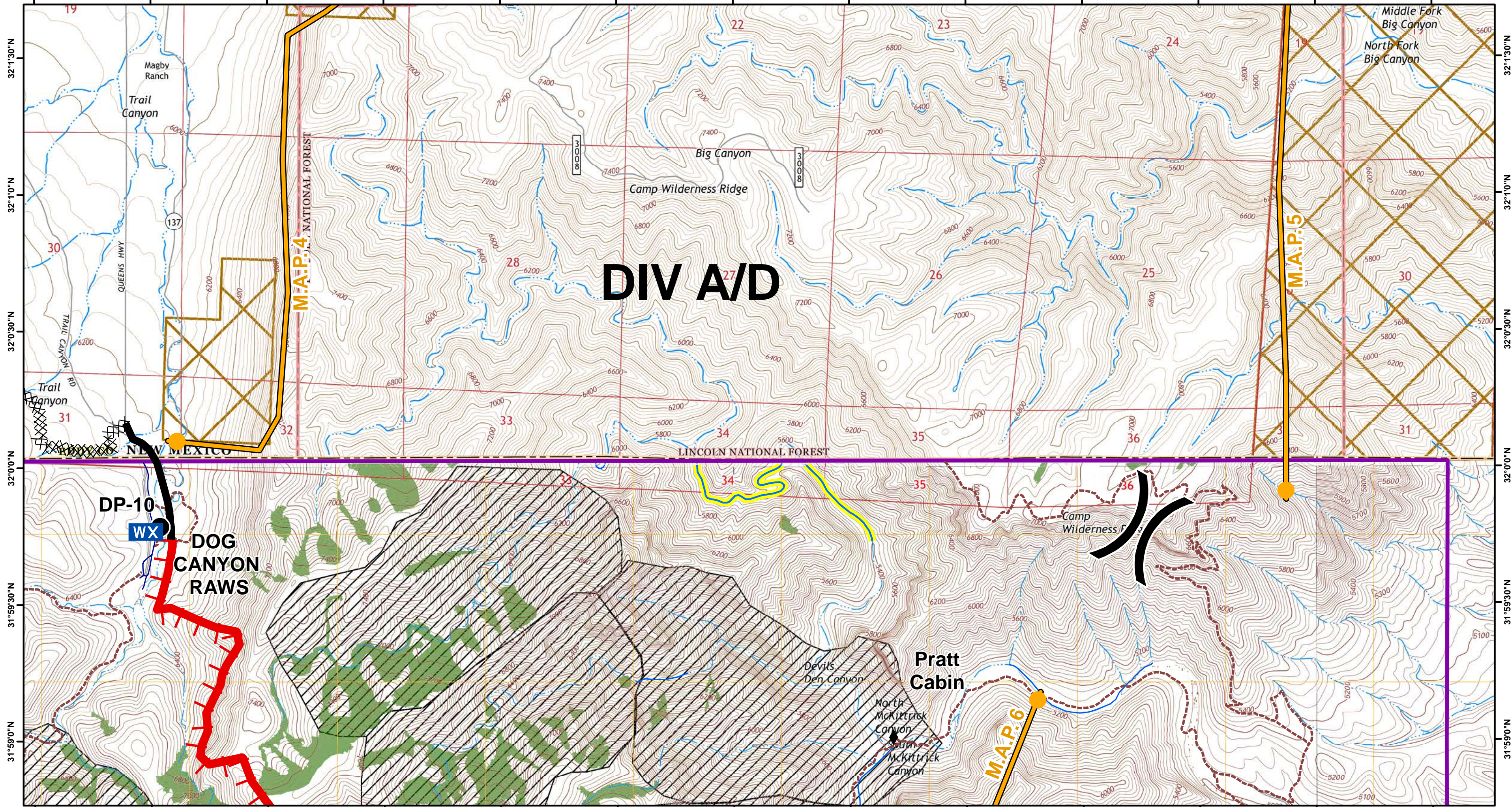
- Drop Point
- Helispot
- WX Mobile Weather Unit
- Ⓡ Repeater

- Ⓜ Water Source
- Ⓡ Repeater - Non USE
- ♦ vars

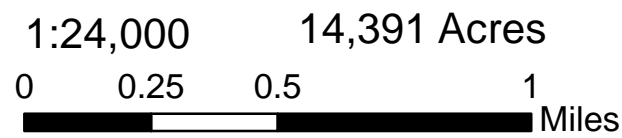
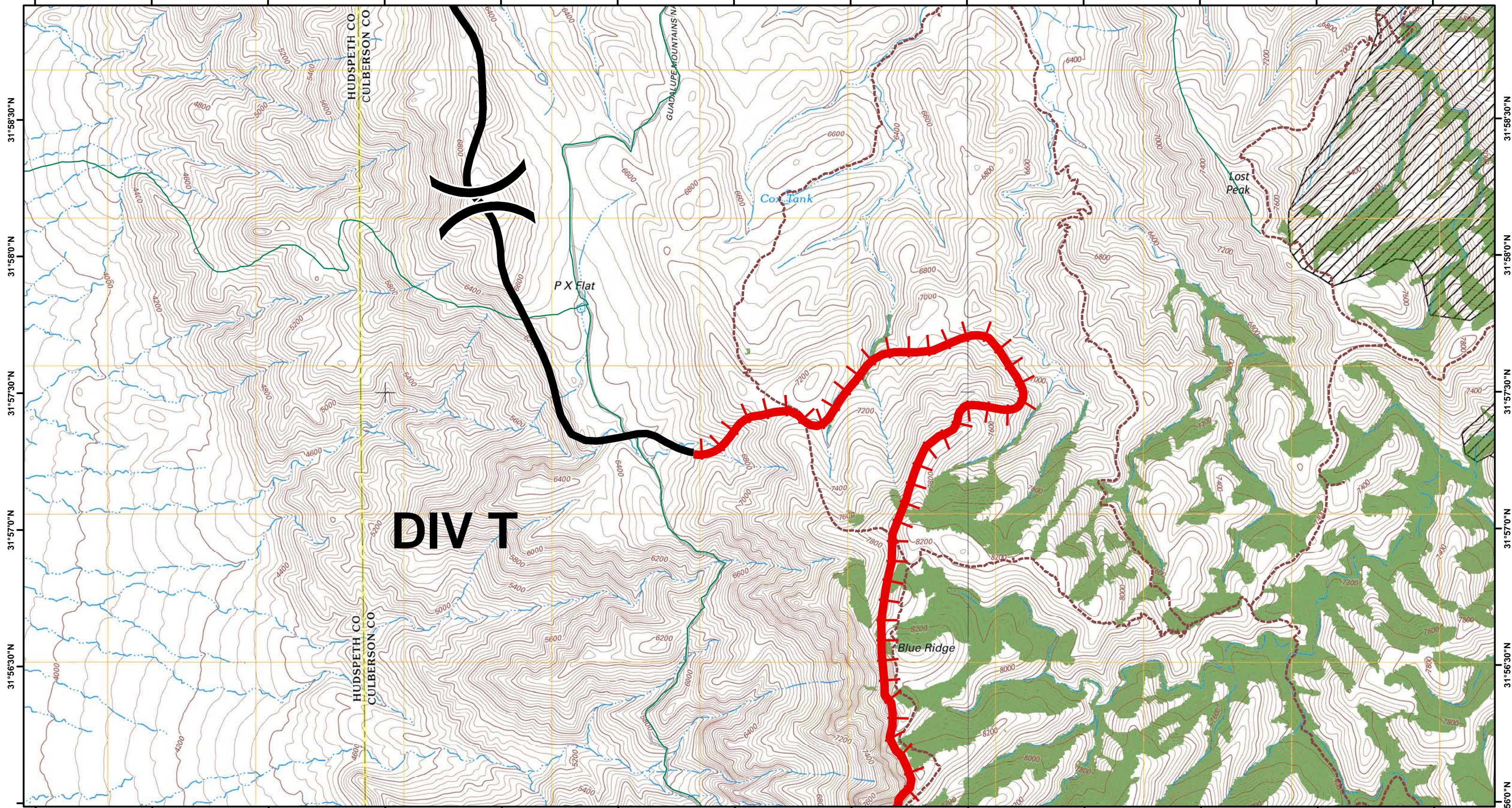
- Driveable Roads
- Non Driveable Roads
- Trails Official
- M.A.P.

- Permanent Stream
- Permanent Stream - NO retardant
- Guadalupe Mtn NP
- BLM Land

- Mixed Conifer
- Owl PAC



Division	Drop Point	Water Source	Driveable Roads	Permanent Stream	Mixed Conifer
Uncontrolled Fire Edge	Helispot	Repeater - Non USE	Non Driveable Roads	Permanent Stream - NO retardant	Owl PAC
Completed Dozer Line	Mobile Weather Unit	vars	Trails Official	Guadalupe Mtn NP	BLM Land
Completed Line	Repeater		M.A.P.		



- () Division
- ▬ Uncontrolled Fire Edge
- ▬ Completed Dozer Line
- ▬ Completed Line

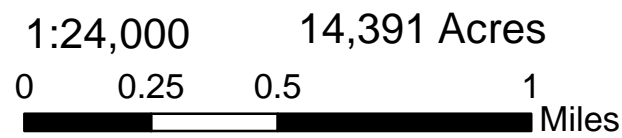
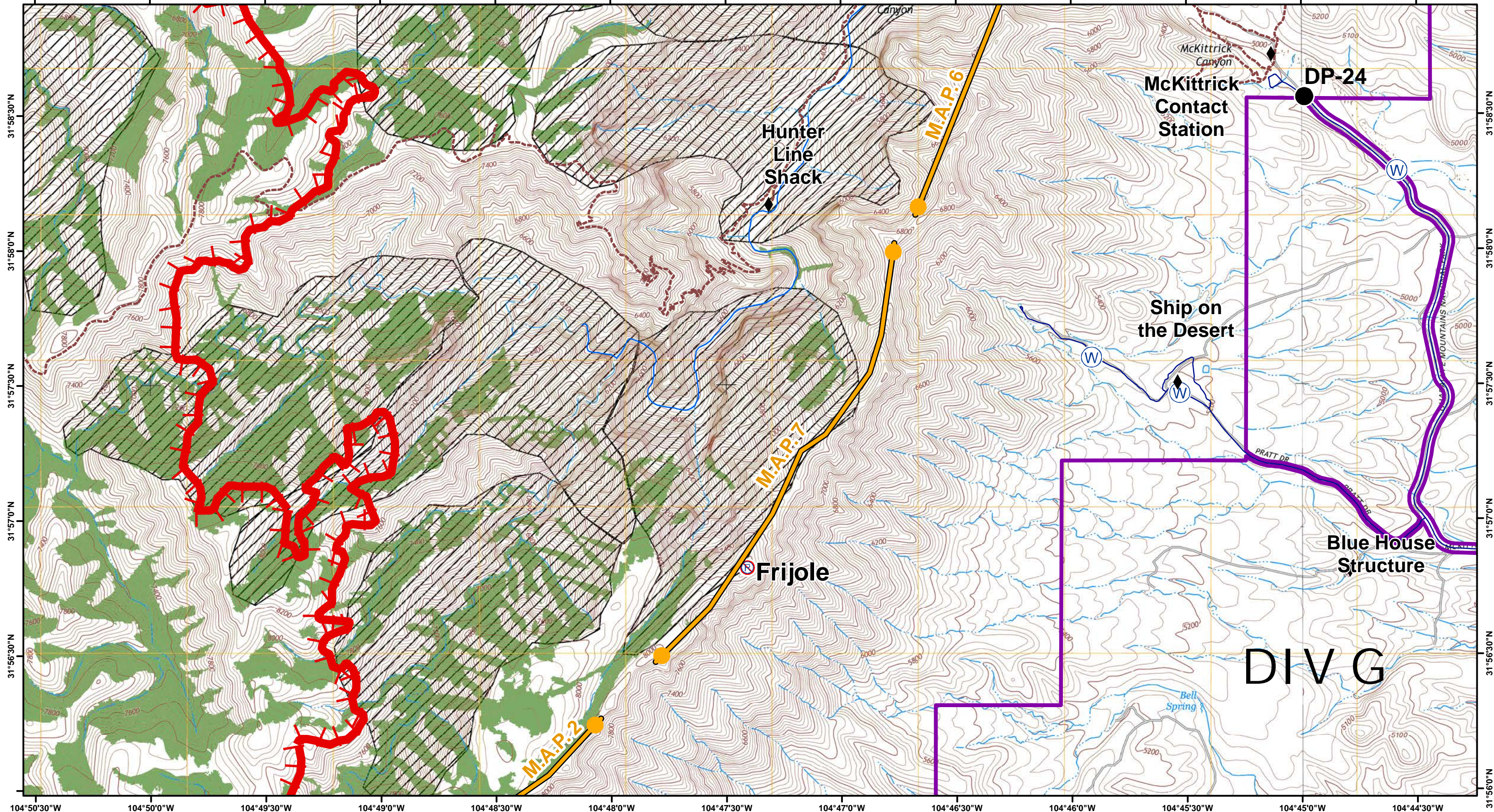
- Drop Point
- Helispot
- WX Mobile Weather Unit
- Ⓡ Repeater

- W Water Source
- Ⓡ Repeater - Non USE
- ♦ vars

- Driveable Roads
- Non Driveable Roads
- - - Trails Official
- M.A.P.

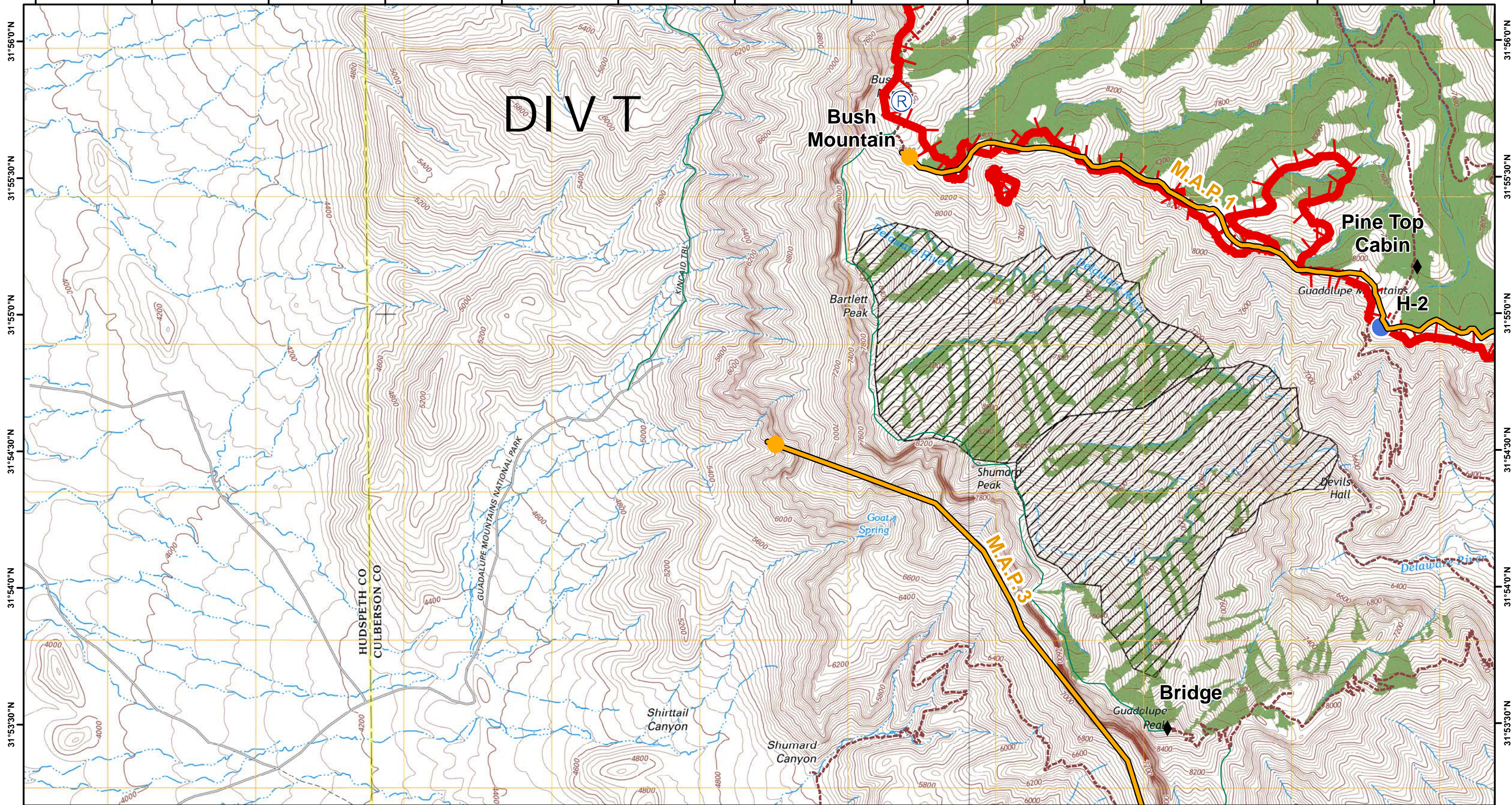
- Permanent Stream
- Permanent Stream - NO retardant
- Guadalupe Mtn NP
- BLM Land

- Mixed Conifer
- Owl PAC



Division	Drop Point	Water Source	Permanent Stream	Mixed Conifer
Uncontrolled Fire Edge	Helispot	Repeater - Non USE	Permanent Stream - NO retardant	Owl PAC
Completed Dozer Line	Mobile Weather Unit	vars	Guadalupe Mtn NP	
Completed Line	Repeater	Driveable Roads	BLM Land	
		Non Driveable Roads		
		Trails Official		
		M.A.P.		

DIV G



104°56'30"W 104°56'0"W 104°55'30"W 104°55'0"W 104°54'30"W 104°54'0"W 104°53'30"W 104°53'0"W 104°52'30"W 104°52'0"W 104°51'30"W 104°51'0"W 104°50'30"W

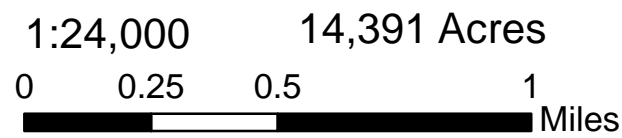
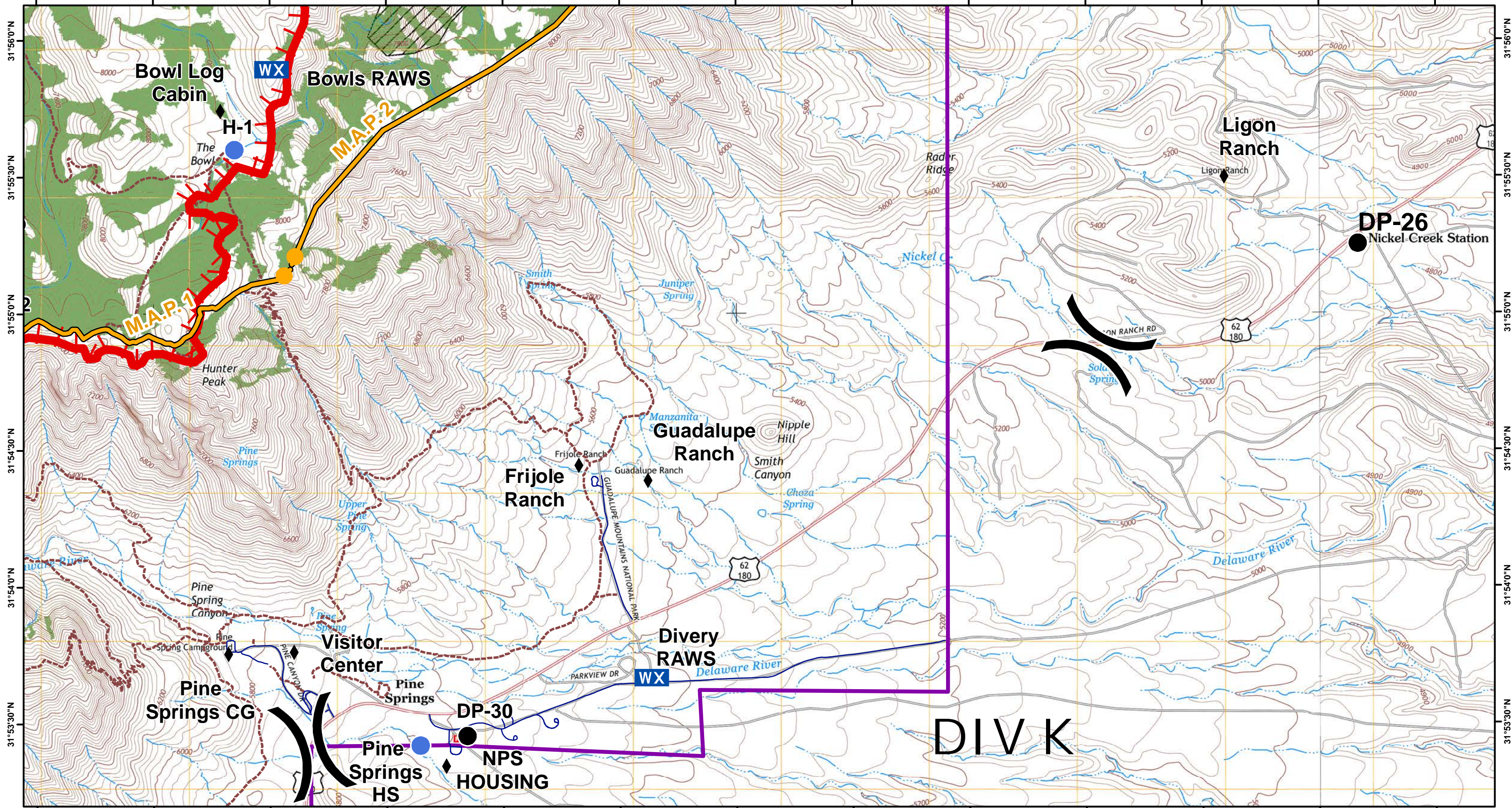
31°56'0"N 31°55'30"N 31°55'0"N 31°54'30"N 31°54'0"N 31°53'30"N

1:24,000 **14,391 Acres**

0 0.25 0.5 1 Miles

N
W E
S

Division	Drop Point	Water Source	Driveable Roads	Permanent Stream	Mixed Conifer
Uncontrolled Fire Edge	Helispot	Repeater - Non USE	Non Driveable Roads	Permanent Stream - NO retardant	Owl PAC
Completed Dozer Line	Mobile Weather Unit	vars	Trails Official	Guadalupe Mtn NP	
Completed Line	Repeater		M.A.P.	BLM Land	



- | | | | | | |
|------------------------|---------------------|--------------------|---------------------|---------------------------------|---------------|
| Division | Drop Point | Water Source | Driveable Roads | Permanent Stream | Mixed Conifer |
| Uncontrolled Fire Edge | Helispot | Repeater - Non USE | Non Driveable Roads | Permanent Stream - NO retardant | Owl PAC |
| Completed Dozer Line | Mobile Weather Unit | vars | Trails Official | Guadalupe Mtn NP | |
| Completed Line | Repeater | | M.A.P. | BLM Land | |