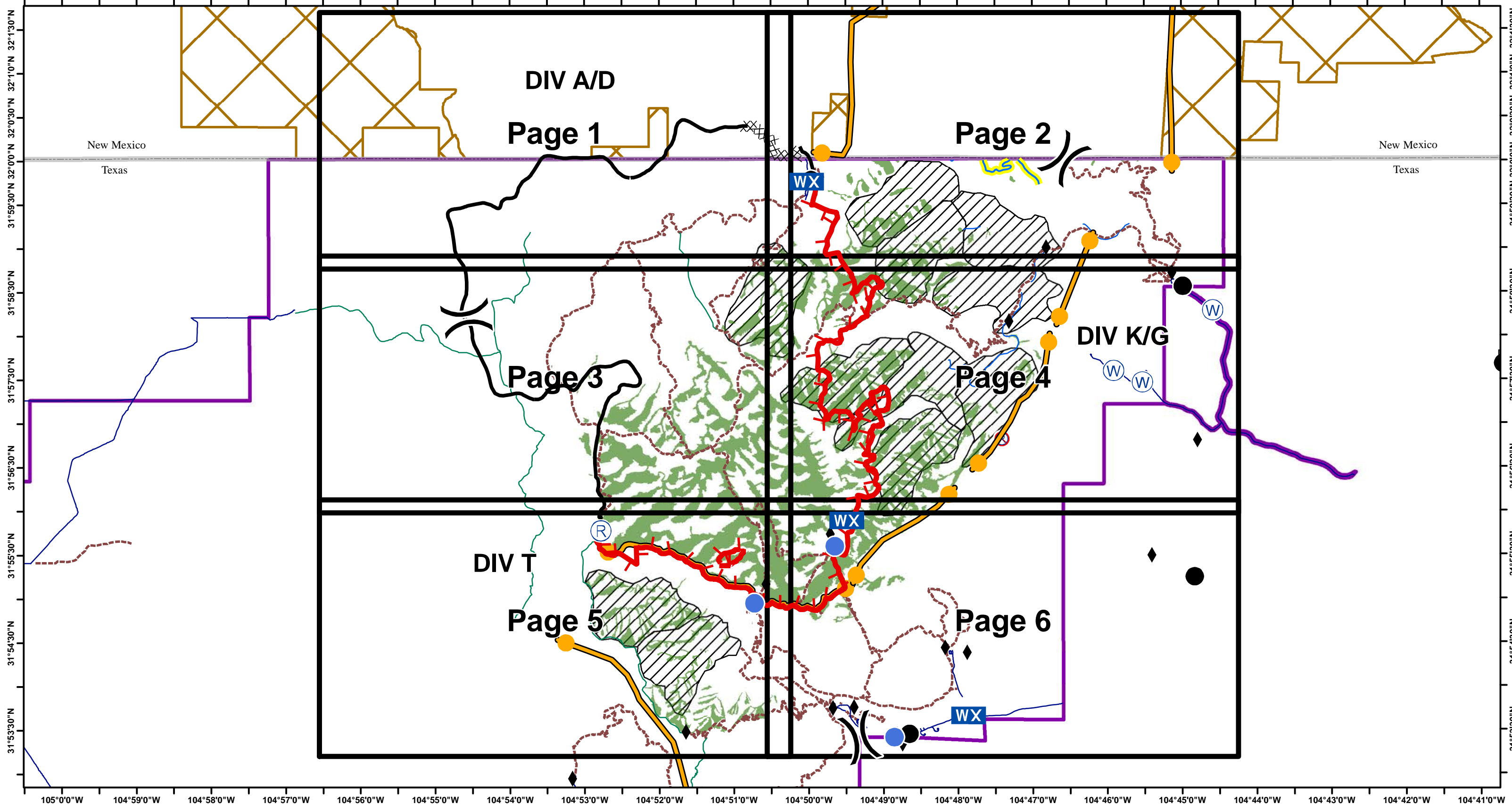


IAP Coyote Fire

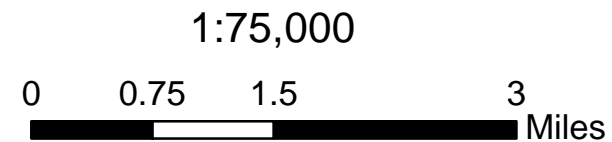
May 28, 2016

TX-GUP-000208

May 27, 2016; 0600 Hrs: 14,365 Acres



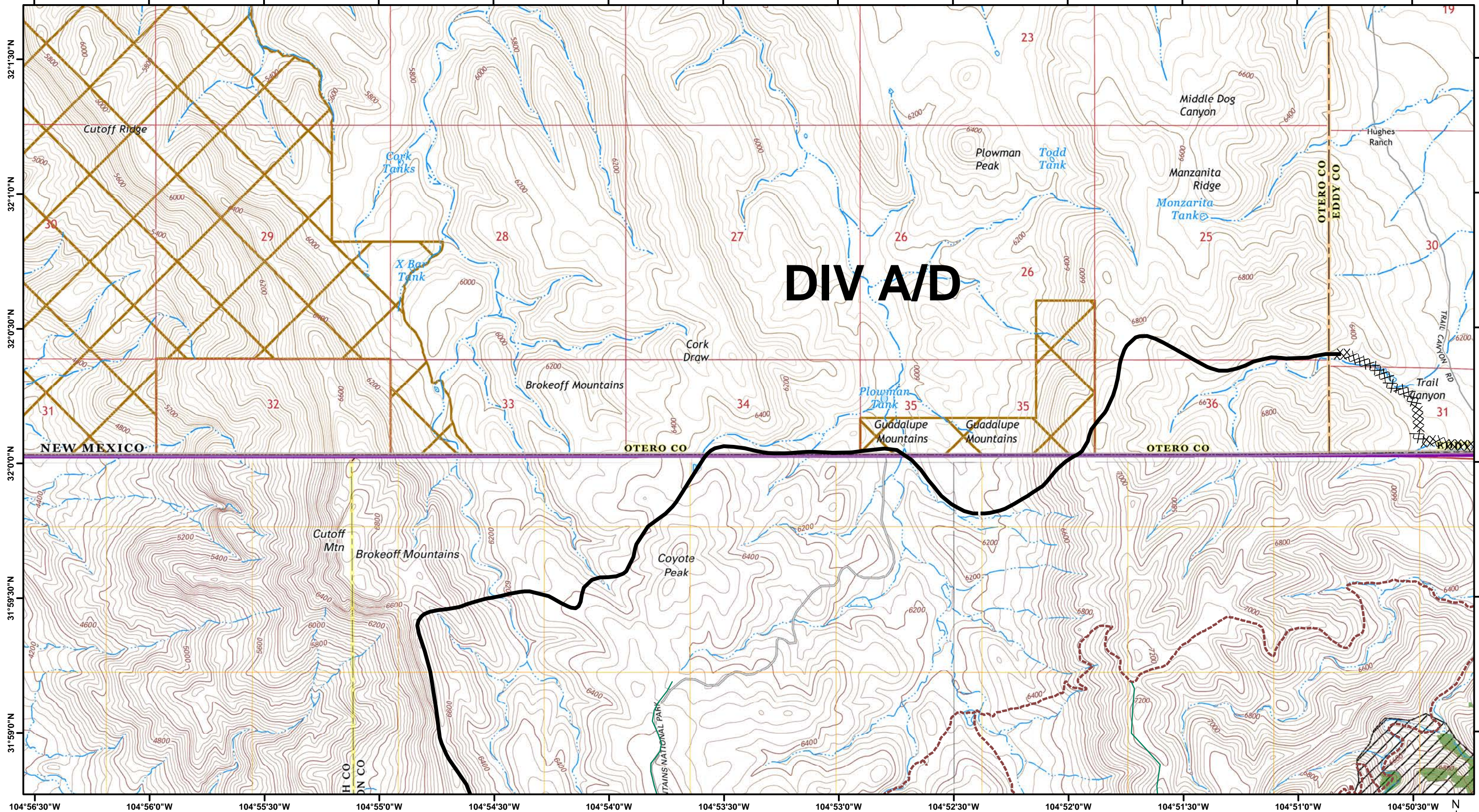
- | | | | |
|------------------------|---------------------------------|---------------------|--------------------|
| Division | Non Driveable Roads | BLM Land | Repeater |
| Uncontrolled Fire Edge | Trails Official | Mixed Conifer | Water Source |
| Completed Dozer Line | Permanent Stream | Owl PAC | Repeater - Non USE |
| Completed Line | Permanent Stream - NO retardant | Drop Point | vars |
| M.A.P. | State Boundaries | Helispot | |
| Driveable Roads | Guadalupe Mtn NP | Mobile Weather Unit | |



North American Datum 1983, Zone 13N

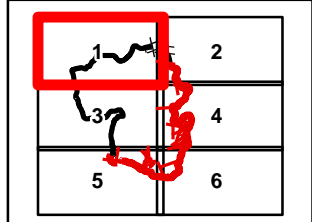


Team 5 GIS
May 27, 2016
2320 Hours



DIV A/D

SOUTHWEST AREA
INCIDENT MANAGEMENT TEAM 5

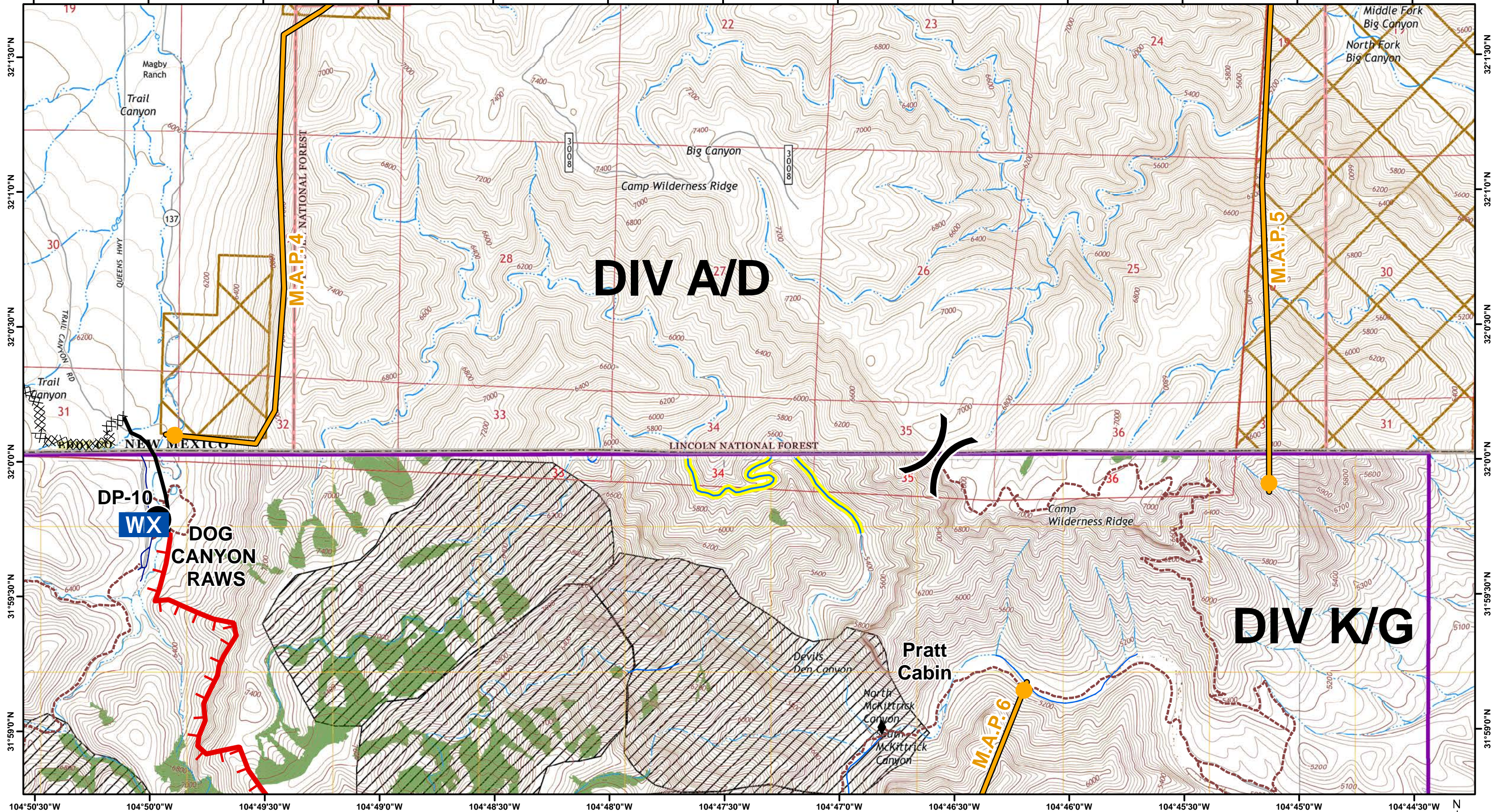


- Division
- Uncontrolled Fire Edge
- Completed Dozer Line
- Completed Line
- M.A.P.
- Driveable Roads
- Non Driveable Roads
- Trails Official
- Permanent Stream
- Permanent Stream - NO retardant
- Guadalupe Mtn NP
- BLM Land
- Mixed Conifer
- Owl PAC
- Drop Point
- Helispot
- Mobile Weather Unit
- Repeater
- Water Source
- Repeater - Non USE
- vars

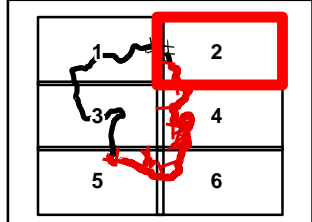
Scale: 1:24,000

0 0.25 0.5 1 Miles

North American Datum 1983, Zone 13N



SOUTHWEST AREA
INCIDENT MANAGEMENT TEAM 5



- (X) Division
- ▬▬▬ Uncontrolled Fire Edge
- XX XX Completed Dozer Line
- ▬▬▬ Completed Line
- M.A.P. M.A.P.
- ▬ Driveable Roads
- ▬ Non Driveable Roads
- ▬▬▬ Trails Official
- ▬ Permanent Stream
- ▬ Permanent Stream - NO retardant
- ▬ Guadalupe Mtn NP
- ▬ BLM Land
- ▬ Mixed Conifer
- ▬ Owl PAC
- Drop Point
- Helispot
- WX Mobile Weather Unit
- Ⓡ Repeater
- Ⓡ Water Source
- Ⓡ Repeater - Non USE
- ♦ vars

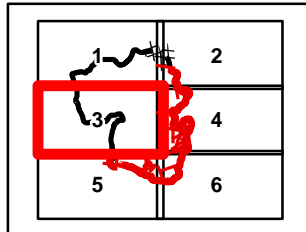
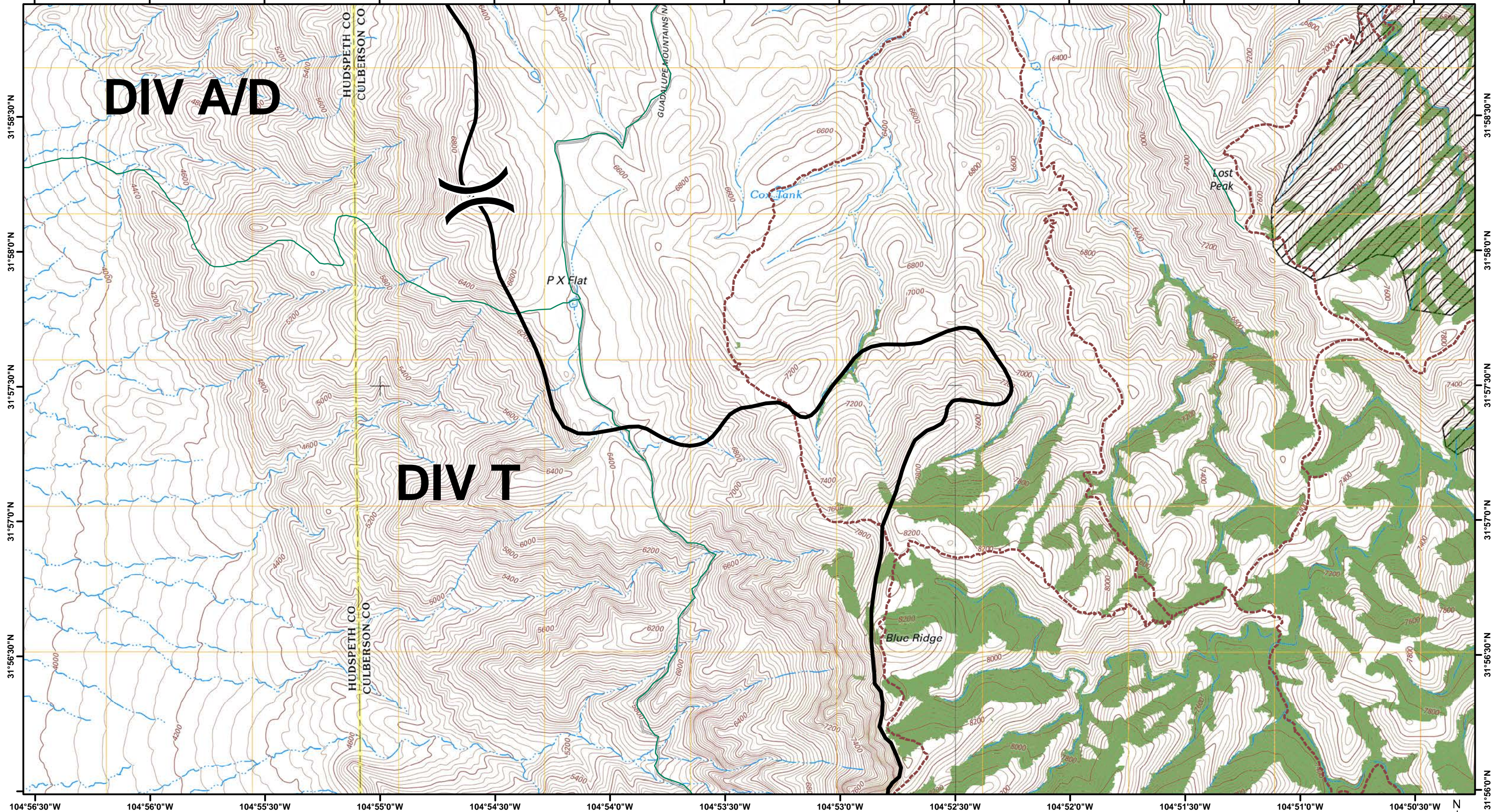
Scale: 1:24,000

0 0.25 0.5 1 Miles

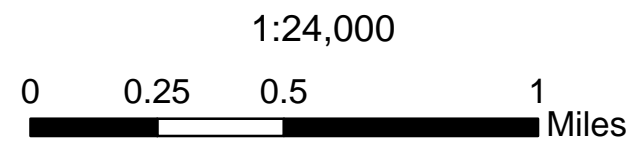
North American Datum 1983, Zone 13N

Team 5 GIS
May 27, 2016
2320 Hours

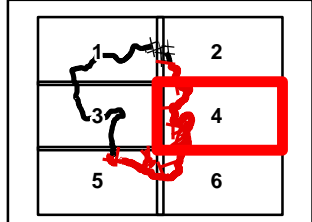
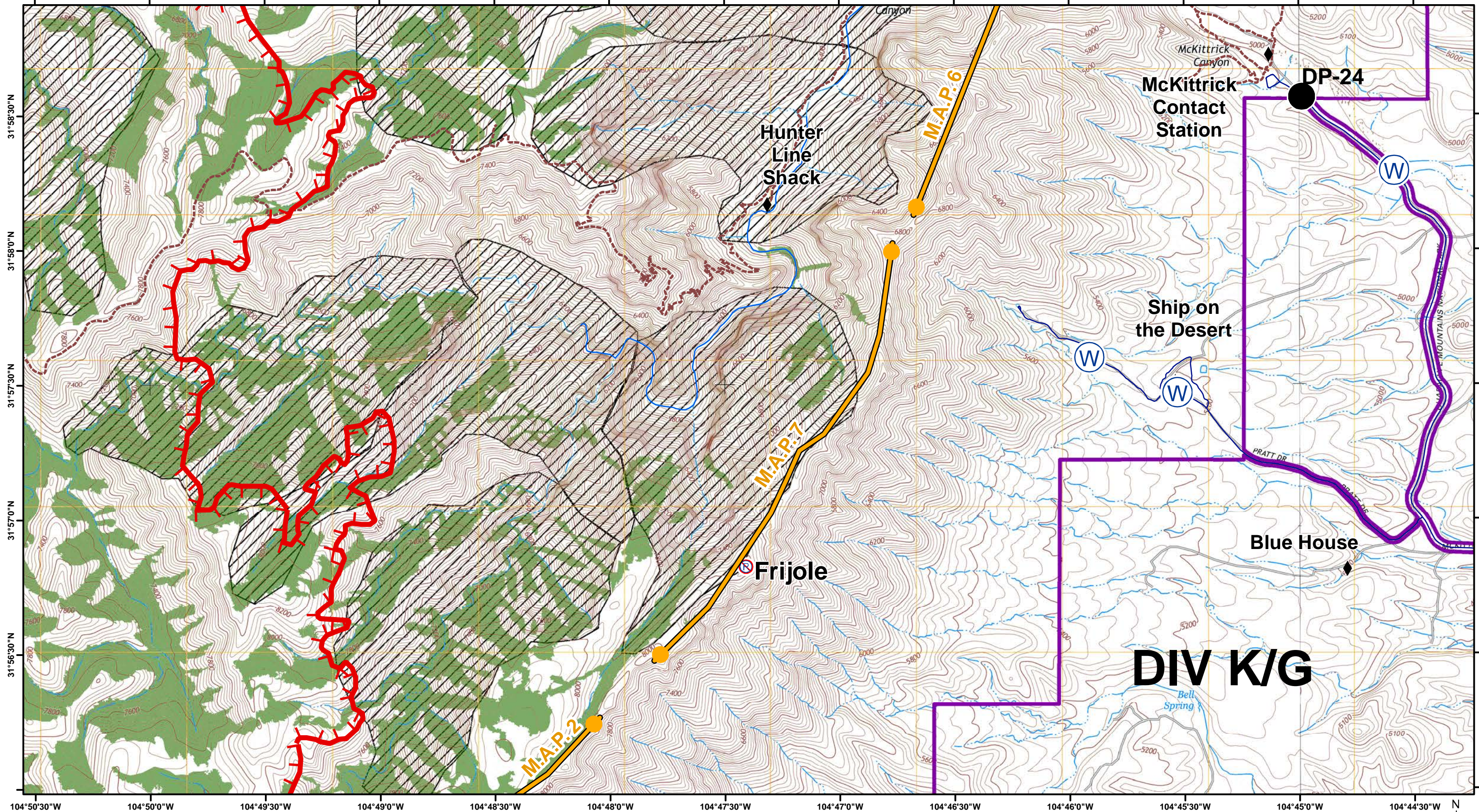
Page 2



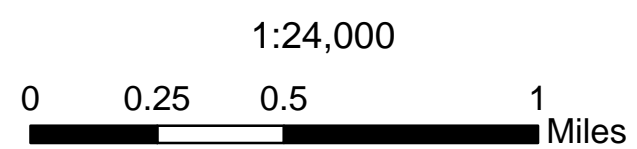
- Division
- Uncontrolled Fire Edge
- Completed Dozer Line
- Completed Line
- M.A.P.
- Driveable Roads
- Non Driveable Roads
- Trails Official
- Permanent Stream
- Permanent Stream - NO retardant
- Guadalupe Mtn NP
- BLM Land
- Mixed Conifer
- Owl PAC
- Drop Point
- Helispot
- Mobile Weather Unit
- Repeater
- Water Source
- Repeater - Non USE
- vars



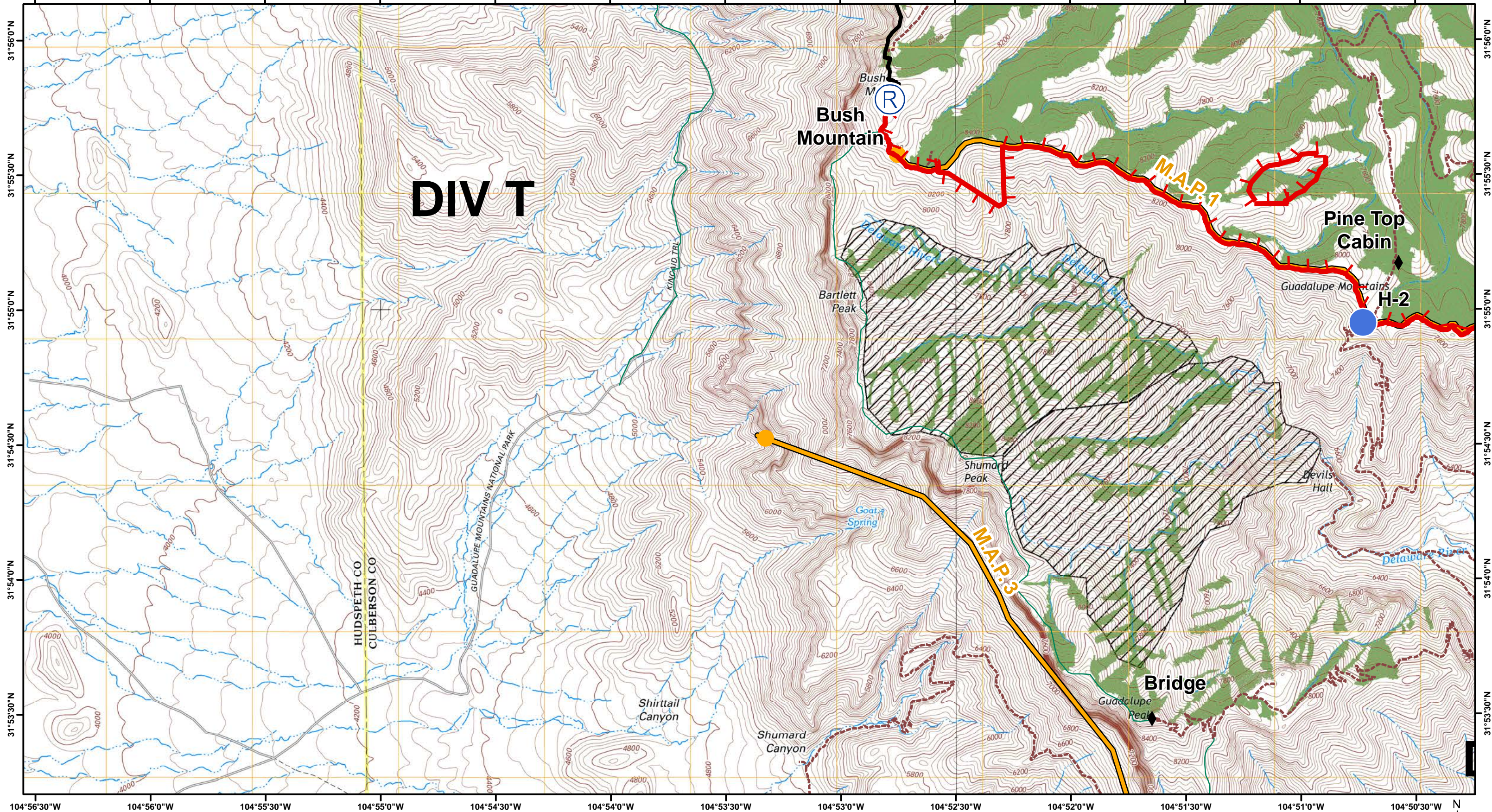
Team 5 GIS
May 27, 2016
2320 Hours



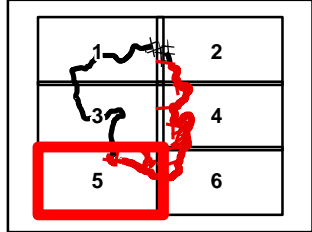
- | | | | | | | | |
|-------|------------------------|-------|---------------------------------|---|---------------------|---|--------------------|
| () | Division | — | Non Driveable Roads | ■ | Mixed Conifer | ⊕ | Water Source |
| ▬▬▬ | Uncontrolled Fire Edge | - - - | Trails Official | ▨ | Owl PAC | ● | Repeater - Non USE |
| XX XX | Completed Dozer Line | — | Permanent Stream | ● | Drop Point | ● | vars |
| — | Completed Line | — | Permanent Stream - NO retardant | ● | Helispot | ⊕ | |
| — | M.A.P. | — | Guadalupe Mtn NP | ⊕ | Mobile Weather Unit | ⊕ | |
| — | Driveable Roads | — | BLM Land | ⊕ | Repeater | | |



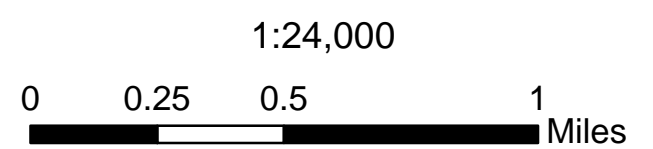
North American Datum 1983, Zone 13N



DIV T



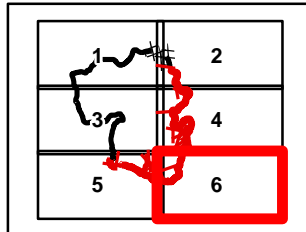
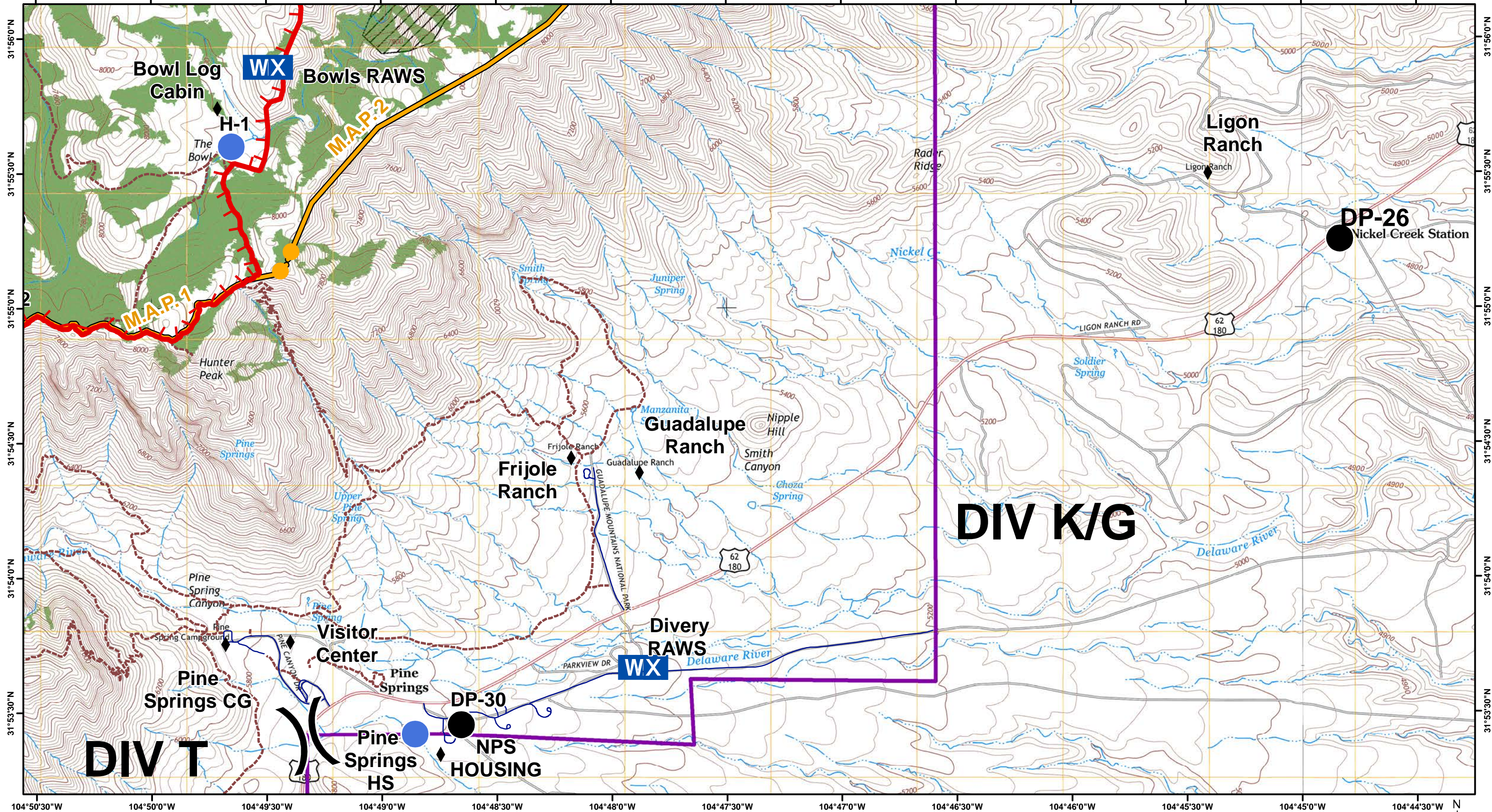
- | | | | |
|----------------------------|-----------------------------------|-----------------------|----------------------|
| (X) Division | — Non Driveable Roads | ■ Mixed Conifer | ⊙ Water Source |
| ▬ Uncontrolled Fire Edge | - - - Trails Official | ▨ Owl PAC | ⊙ Repeater - Non USE |
| XX XX Completed Dozer Line | — Permanent Stream | ● Drop Point | ◆ vars |
| — Completed Line | — Permanent Stream - NO retardant | ● Helispot | |
| — M.A.P. | ▭ Guadalupe Mtn NP | ⊙ Mobile Weather Unit | |
| — Driveable Roads | ▭ BLM Land | ⊙ Repeater | |



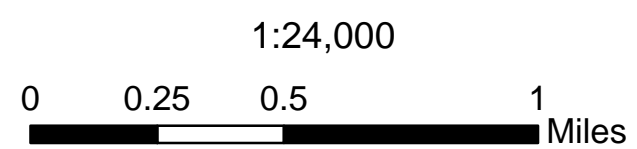
North American Datum 1983, Zone 13N



Team 5 GIS
May 27, 2016
2320 Hours



- () Division
- Uncontrolled Fire Edge
- XX XX Completed Dozer Line
- Completed Line
- M.A.P.
- Driveable Roads
- Non Driveable Roads
- Trails Official
- Permanent Stream
- Permanent Stream - NO retardant
- Guadalupe Mtn NP
- BLM Land
- Mixed Conifer
- Owl PAC
- Drop Point
- Helispot
- Mobile Weather Unit
- Repeater
- Water Source
- Repeater - Non USE
- vars



Team 5 GIS
May 27, 2016
2320 Hours