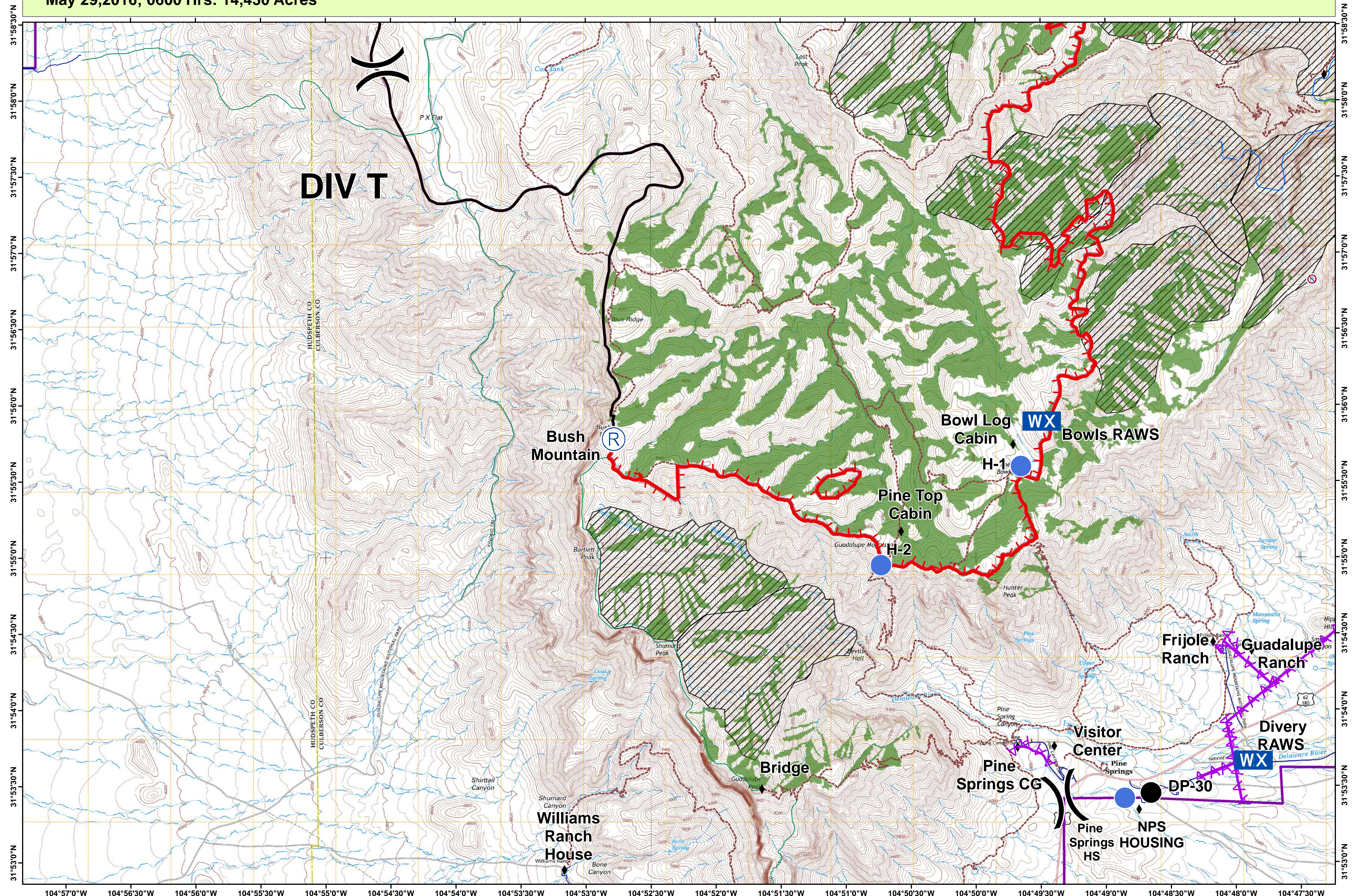


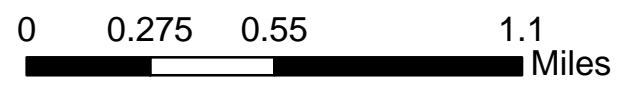
OPS DIVISION T

May 29, 2016; 0600 Hrs: 14,430 Acres

COYOTE FIRE TX-GUP-000208



1:27,000



- | | | | | | | |
|---------------------------|------------------------|-----------------------|----------------------|-------------------------|-----------------------------------|---------------|
| (X) Division | Uncontrolled Fire Edge | ● Drop Point | ⊕ Water Source | — Driveable Roads | — Permanent Stream - NO retardant | USFS |
| XXXX Completed Dozer Line | Completed Line | ● Helispot | ⊖ Repeater - Non USE | --- Non Driveable Roads | — Powerlines | Private |
| | | ⊕ Mobile Weather Unit | ◆ VARS | --- Trails Official | — Guadalupe Mtn NP | State |
| | | ⊕ Repeater | | — Permanent Stream | — BLM Land | Mixed Conifer |
| | | | | | | Owl PAC |