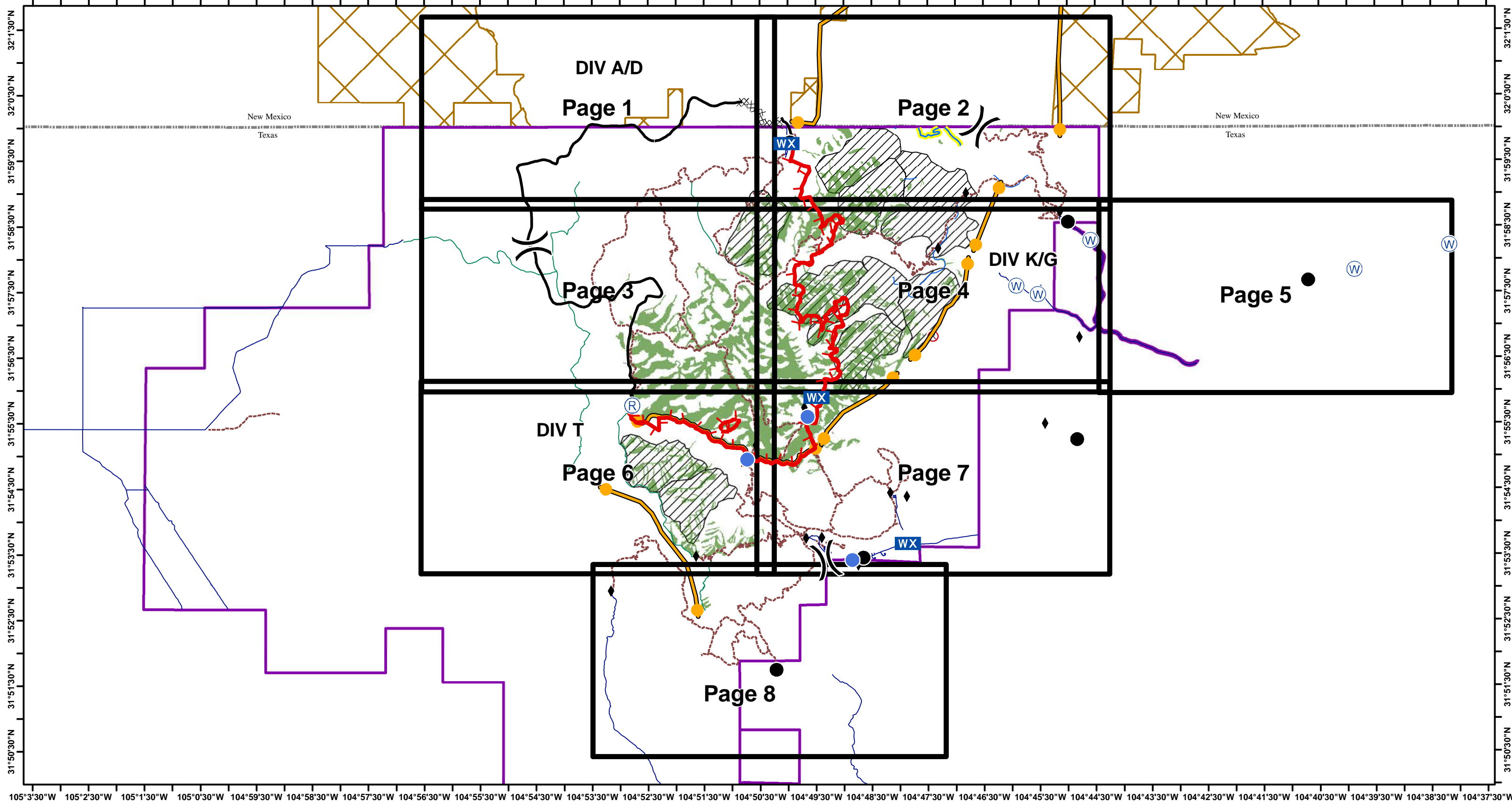


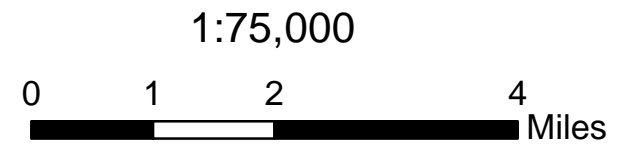
# IAP Coyote Fire

May 29, 2016; 0600 Hrs: 14,430 Acres

TX-GUP-000208

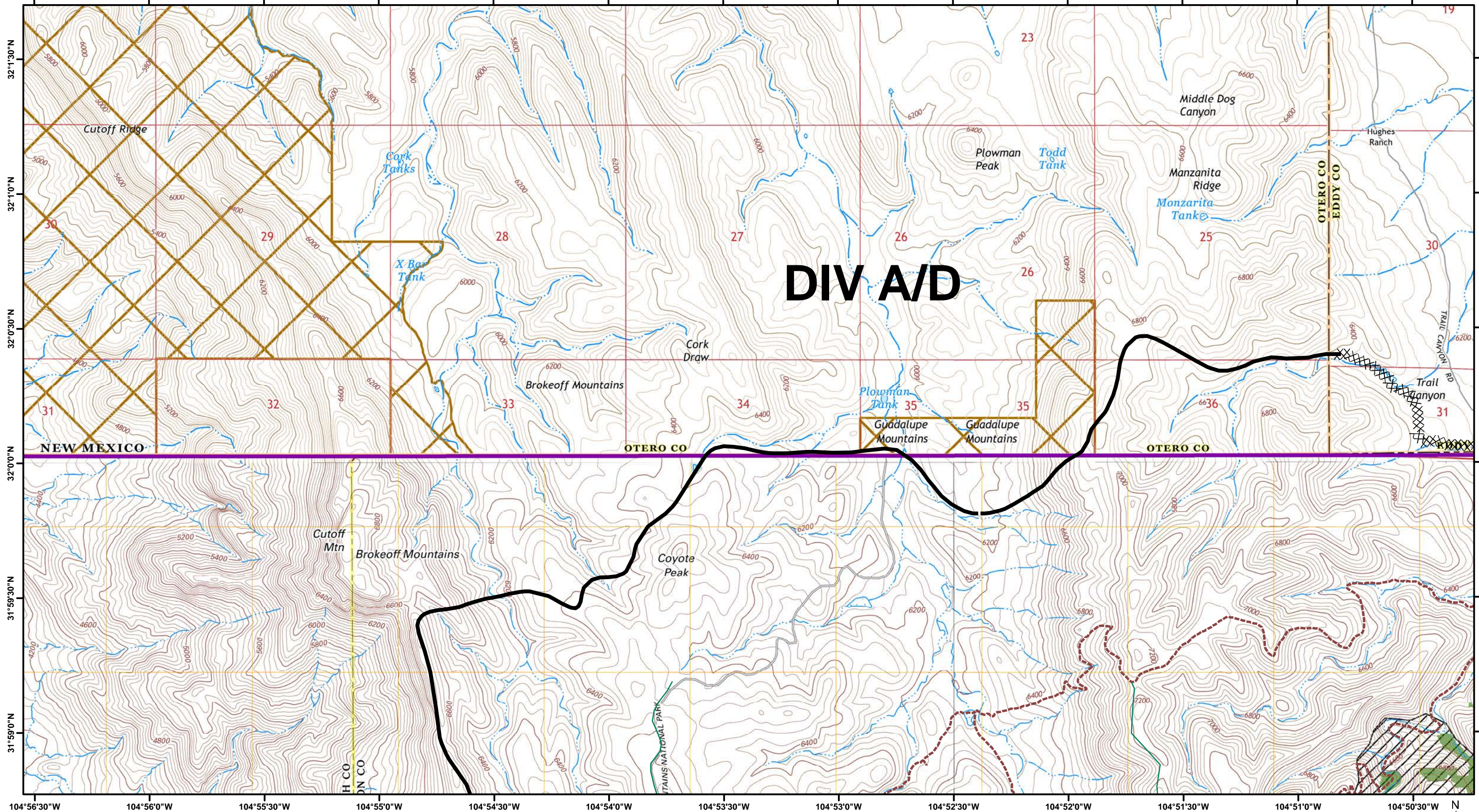


- |                            |                                   |                        |                      |
|----------------------------|-----------------------------------|------------------------|----------------------|
| ( ) Division               | — Non Driveable Roads             | BLM Land               | Ⓡ Repeater           |
| Uncontrolled Fire Edge     | - - - Trails Official             | Mixed Conifer          | Ⓜ Water Source       |
| XX XX Completed Dozer Line | — Permanent Stream                | Owl PAC                | Ⓡ Repeater - Non USE |
| — Completed Line           | — Permanent Stream - NO retardant | ● Drop Point           | ♦ vars               |
| — M.A.P.                   | — State Boundaries                | ● Helispot             |                      |
| — Driveable Roads          | — Guadalupe Mtn NP                | WX Mobile Weather Unit |                      |

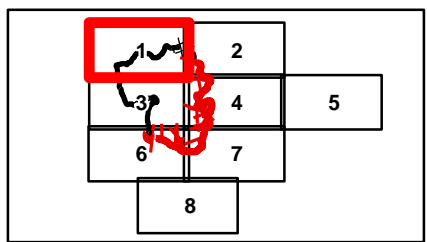


North American Datum 1983, Zone 13N

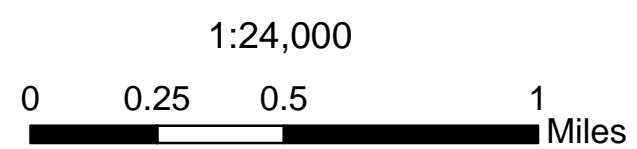
Team 5 GIS  
May 27, 2016  
2320 Hours

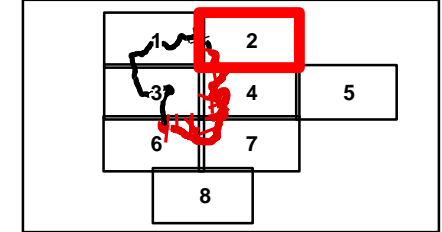
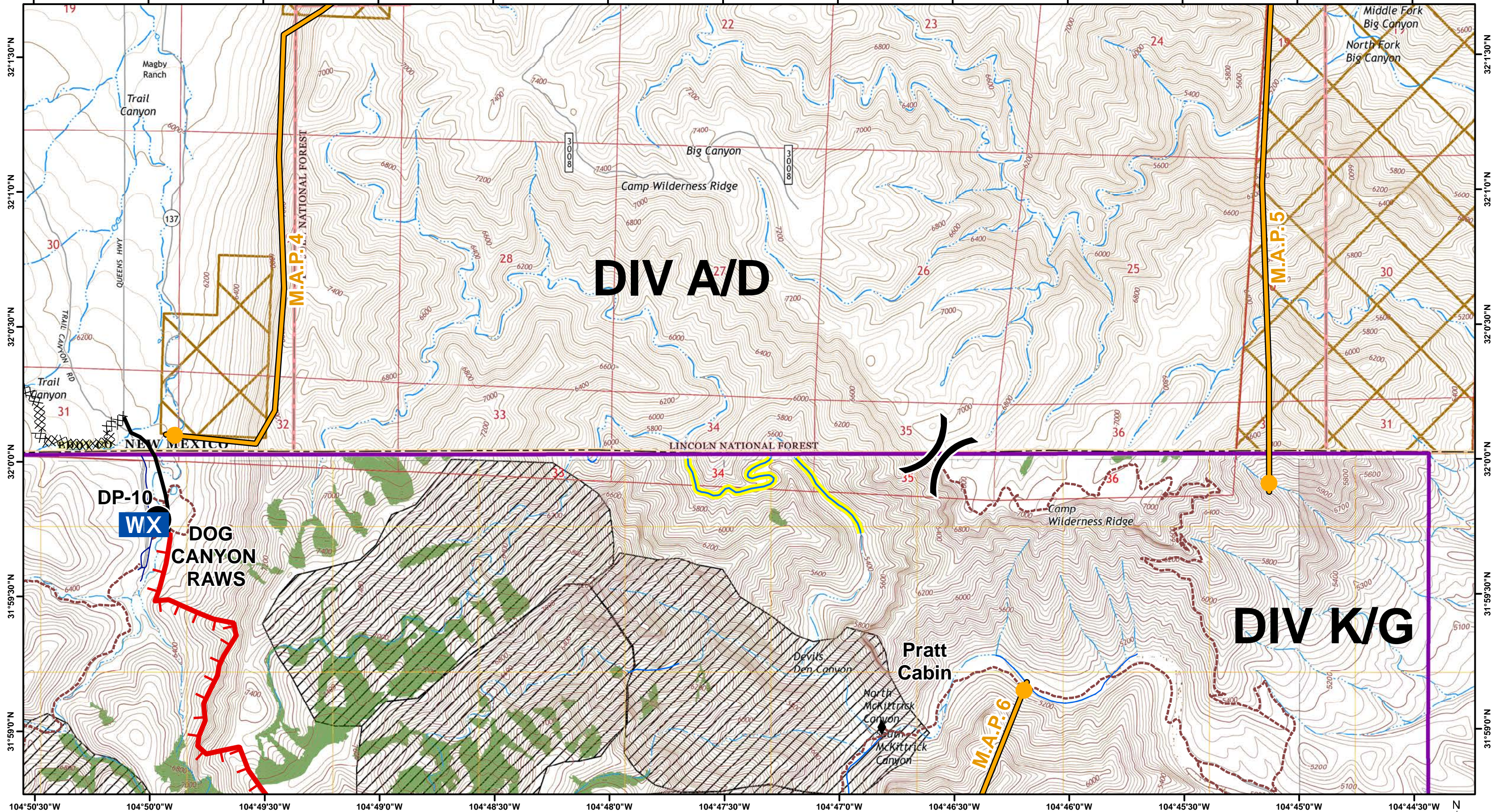


## DIV A/D

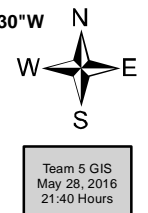
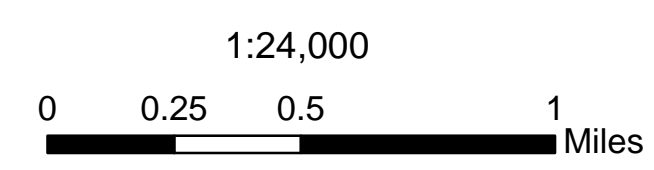


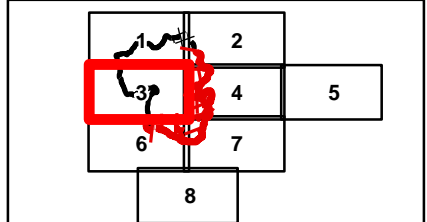
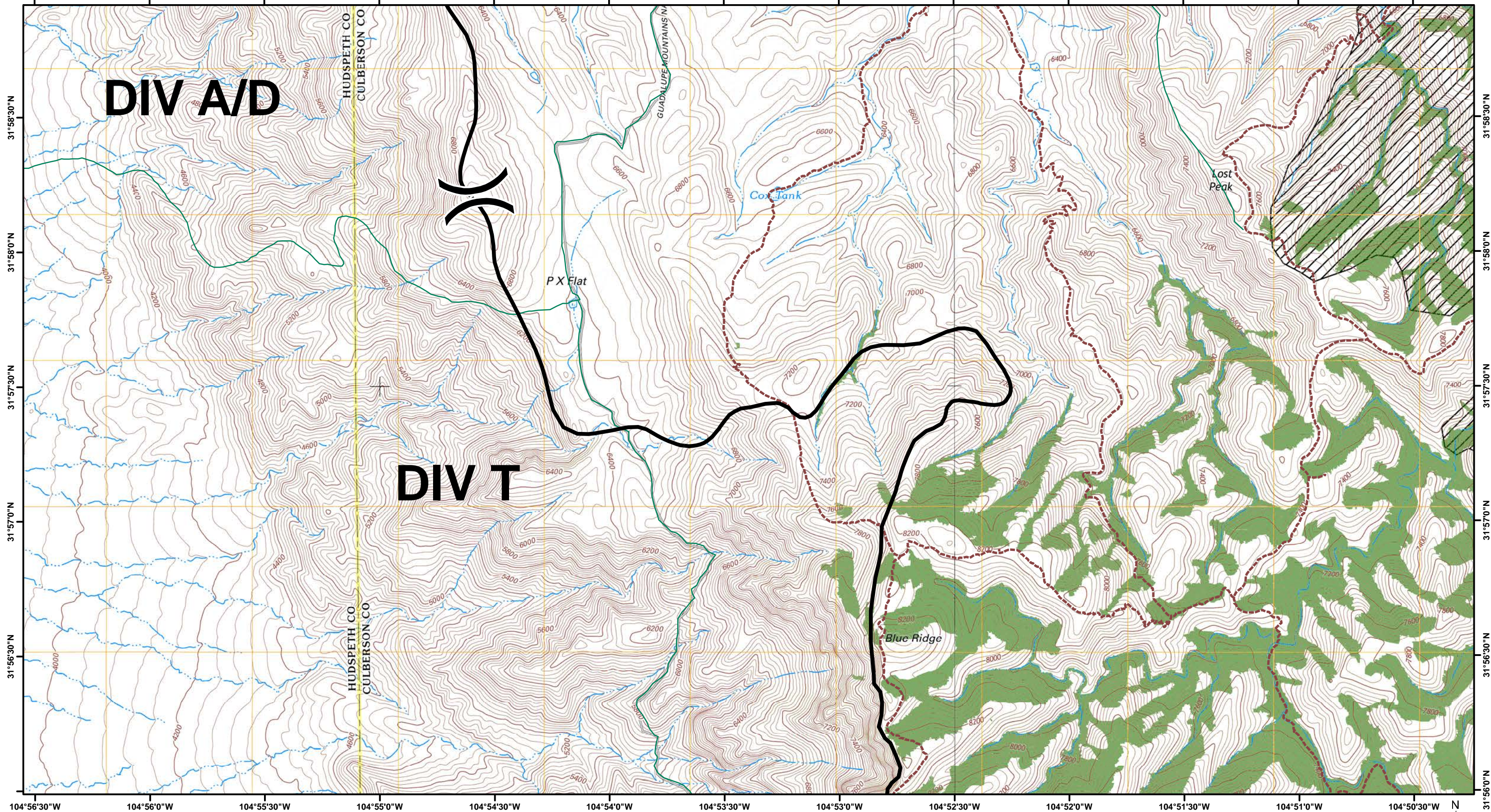
- Division
- Uncontrolled Fire Edge
- Completed Dozer Line
- Completed Line
- M.A.P.
- Driveable Roads
- Non Driveable Roads
- Trails Official
- Permanent Stream
- Permanent Stream - NO retardant
- Guadalupe Mtn NP
- BLM Land
- Mixed Conifer
- Owl PAC
- Drop Point
- Helispot
- Mobile Weather Unit
- Repeater
- Water Source
- Repeater - Non USE
- vars



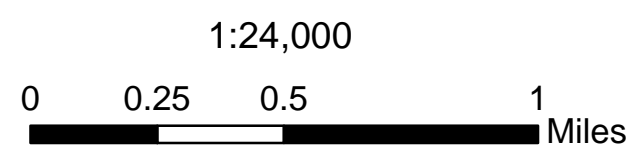


- ( ) Division
- Uncontrolled Fire Edge
- XX XX Completed Dozer Line
- Completed Line
- M.A.P.
- Driveable Roads
- Non Driveable Roads
- Trails Official
- Permanent Stream
- Permanent Stream - NO retardant
- Guadalupe Mtn NP
- BLM Land
- Mixed Conifer
- Owl PAC
- Drop Point
- Helispot
- Mobile Weather Unit
- Repeater
- Water Source
- Repeater - Non USE
- vars





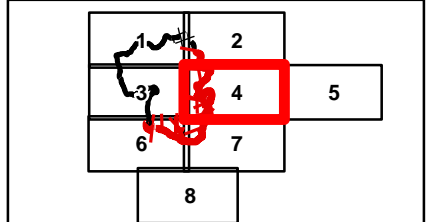
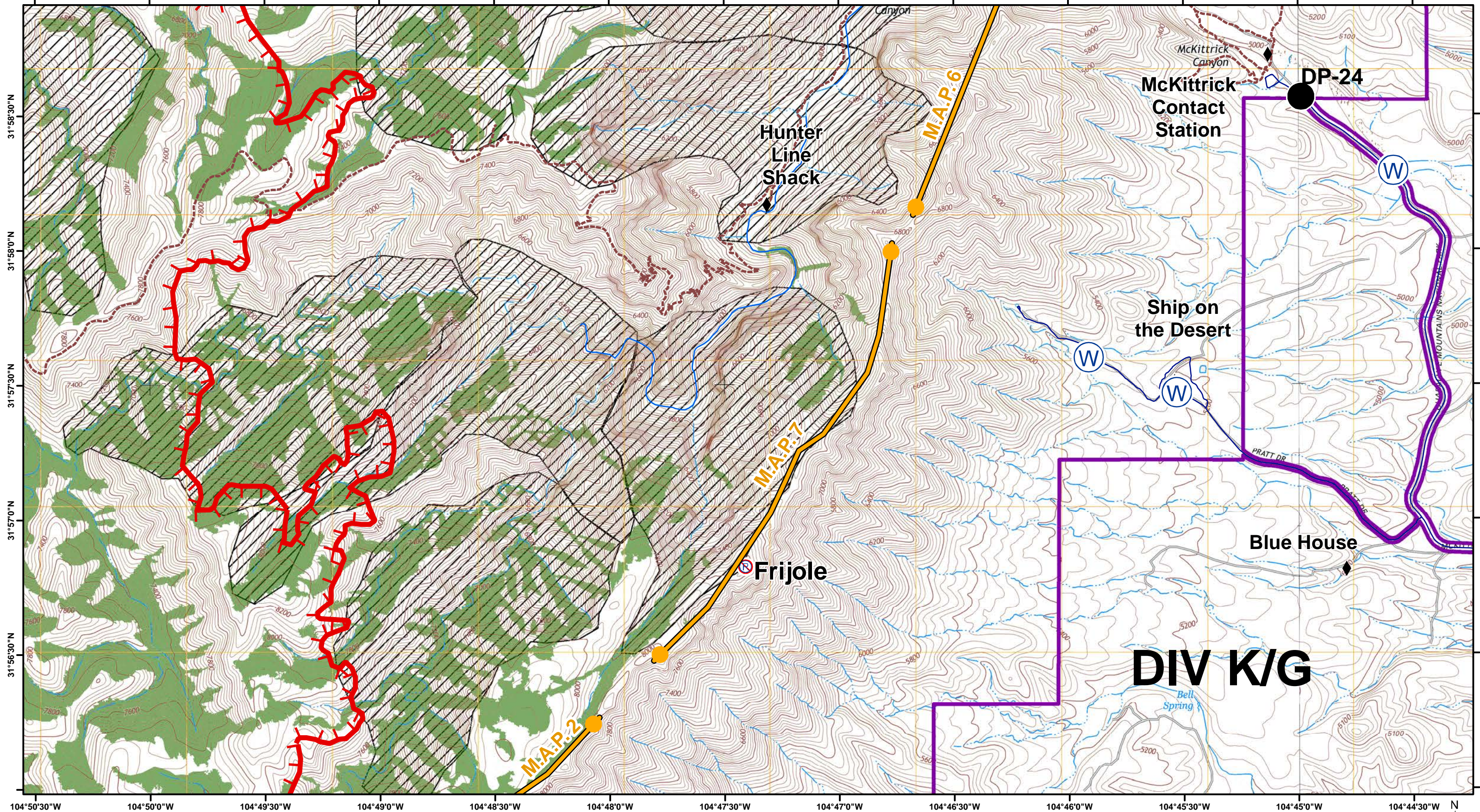
- Division
- Uncontrolled Fire Edge
- Completed Dozer Line
- Completed Line
- M.A.P.
- Driveable Roads
- Non Driveable Roads
- Trails Official
- Permanent Stream
- Permanent Stream - NO retardant
- Guadalupe Mtn NP
- BLM Land
- Mixed Conifer
- Owl PAC
- Drop Point
- Helispot
- Mobile Weather Unit
- Repeater
- Water Source
- Repeater - Non USE
- vars



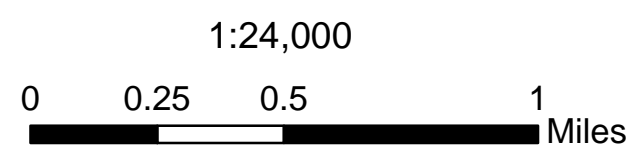
North American Datum 1983, Zone 13N



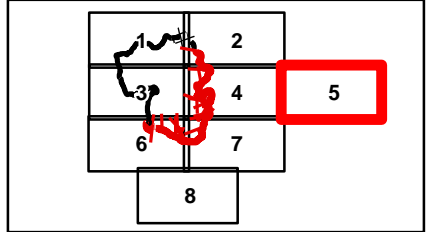
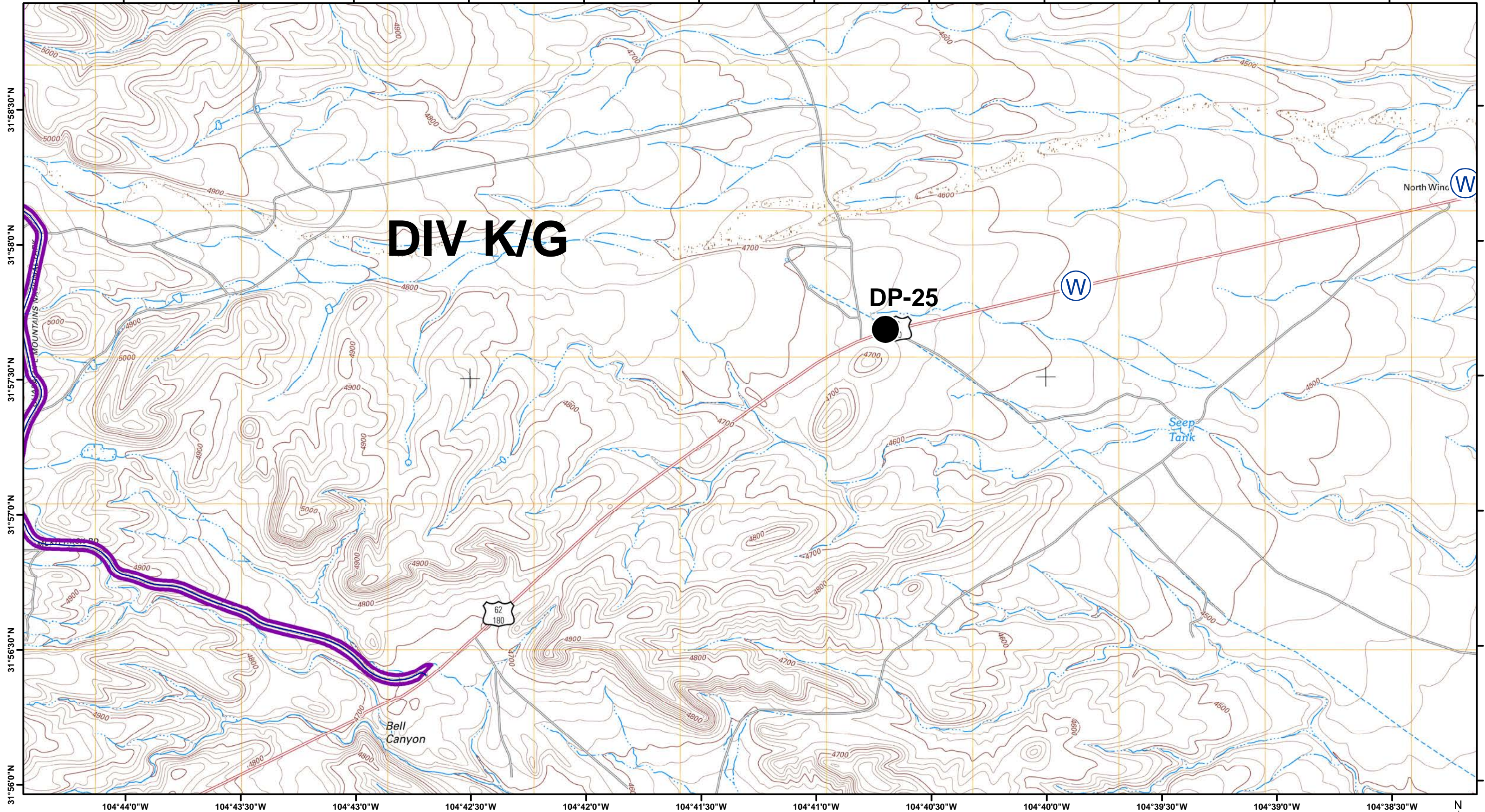
Team 5 GIS  
May 28, 2016  
21:40 Hours



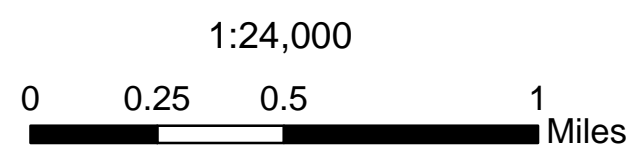
- |       |                        |       |                                 |   |                     |   |                    |
|-------|------------------------|-------|---------------------------------|---|---------------------|---|--------------------|
| ( )   | Division               | —     | Non Driveable Roads             | ■ | Mixed Conifer       | ⊕ | Water Source       |
| ▬▬▬   | Uncontrolled Fire Edge | - - - | Trails Official                 | ▨ | Owl PAC             | ● | Repeater - Non USE |
| XX XX | Completed Dozer Line   | —     | Permanent Stream                | ● | Drop Point          | ● | vars               |
| ▬▬▬   | Completed Line         | —     | Permanent Stream - NO retardant | ● | Helispot            | ⊕ |                    |
| ▬▬▬   | M.A.P.                 | ▬▬▬   | Guadalupe Mtn NP                | ⊕ | Mobile Weather Unit | ⊕ |                    |
| —     | Driveable Roads        | ▬▬▬   | BLM Land                        | ⊕ | Repeater            |   |                    |



Team 5 GIS  
May 28, 2016  
21:40 Hours



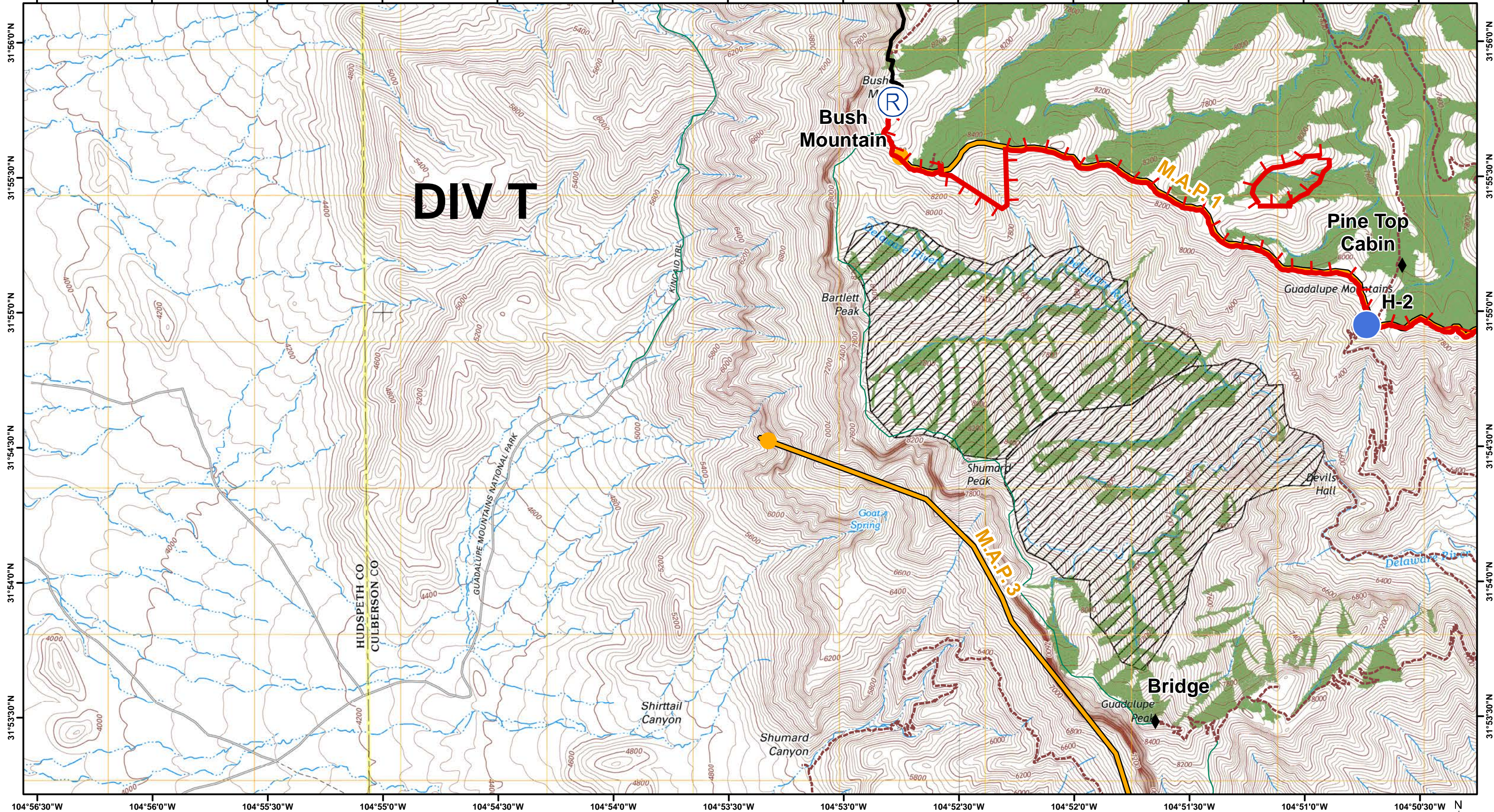
- ( ) Division
- Uncontrolled Fire Edge
- XX XX Completed Dozer Line
- Completed Line
- M.A.P.
- Driveable Roads
- Non Driveable Roads
- Trails Official
- Permanent Stream
- Permanent Stream - NO retardant
- Guadalupe Mtn NP
- BLM Land
- Mixed Conifer
- Owl PAC
- Drop Point
- Helispot
- Mobile Weather Unit
- Repeater
- Water Source
- Repeater - Non USE
- vars



North American Datum 1983, Zone 13N

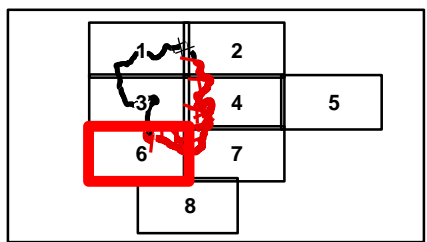


Team 5 GIS  
May 28, 2016  
21:40 Hours

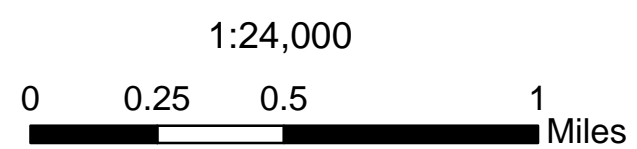


104°56'30"W 104°56'0"W 104°55'30"W 104°55'0"W 104°54'30"W 104°54'0"W 104°53'30"W 104°53'0"W 104°52'30"W 104°52'0"W 104°51'30"W 104°51'0"W 104°50'30"W

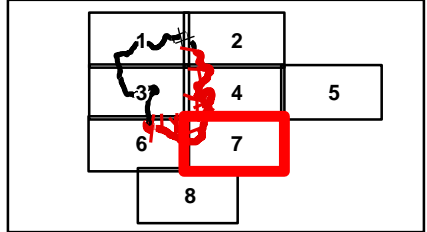
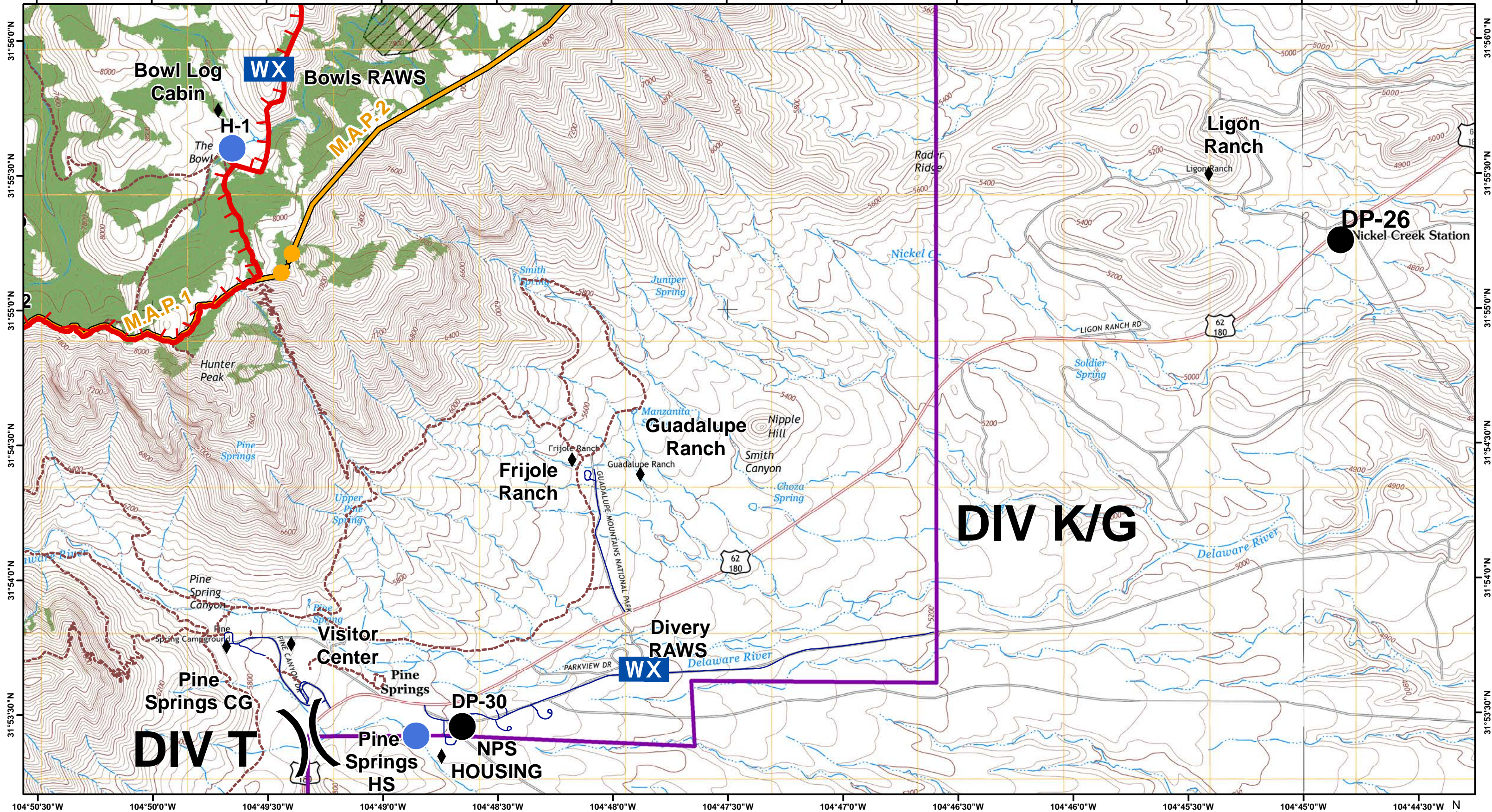
31°53'30"N 31°54'0"N 31°54'30"N 31°55'0"N 31°55'30"N 31°56'0"N



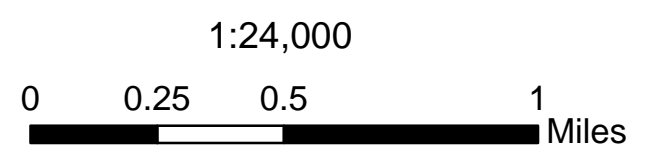
- Division
- Uncontrolled Fire Edge
- Completed Dozer Line
- Completed Line
- M.A.P.
- Driveable Roads
- Non Driveable Roads
- Trails Official
- Permanent Stream
- Permanent Stream - NO retardant
- Guadalupe Mtn NP
- BLM Land
- Mixed Conifer
- Owl PAC
- Drop Point
- Helispot
- Mobile Weather Unit
- Repeater
- Water Source
- Repeater - Non USE
- vars



Team 5 GIS  
May 28, 2016  
21:40 Hours



- ( ) Division
- Uncontrolled Fire Edge
- XX XX Completed Dozer Line
- Completed Line
- M.A.P.
- Driveable Roads
- Non Driveable Roads
- Trails Official
- Permanent Stream
- Permanent Stream - NO retardant
- Guadalupe Mtn NP
- BLM Land
- Mixed Conifer
- Owl PAC
- Drop Point
- Helispot
- Mobile Weather Unit
- Repeater
- Water Source
- Repeater - Non USE
- vars

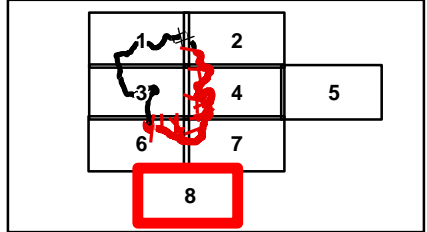
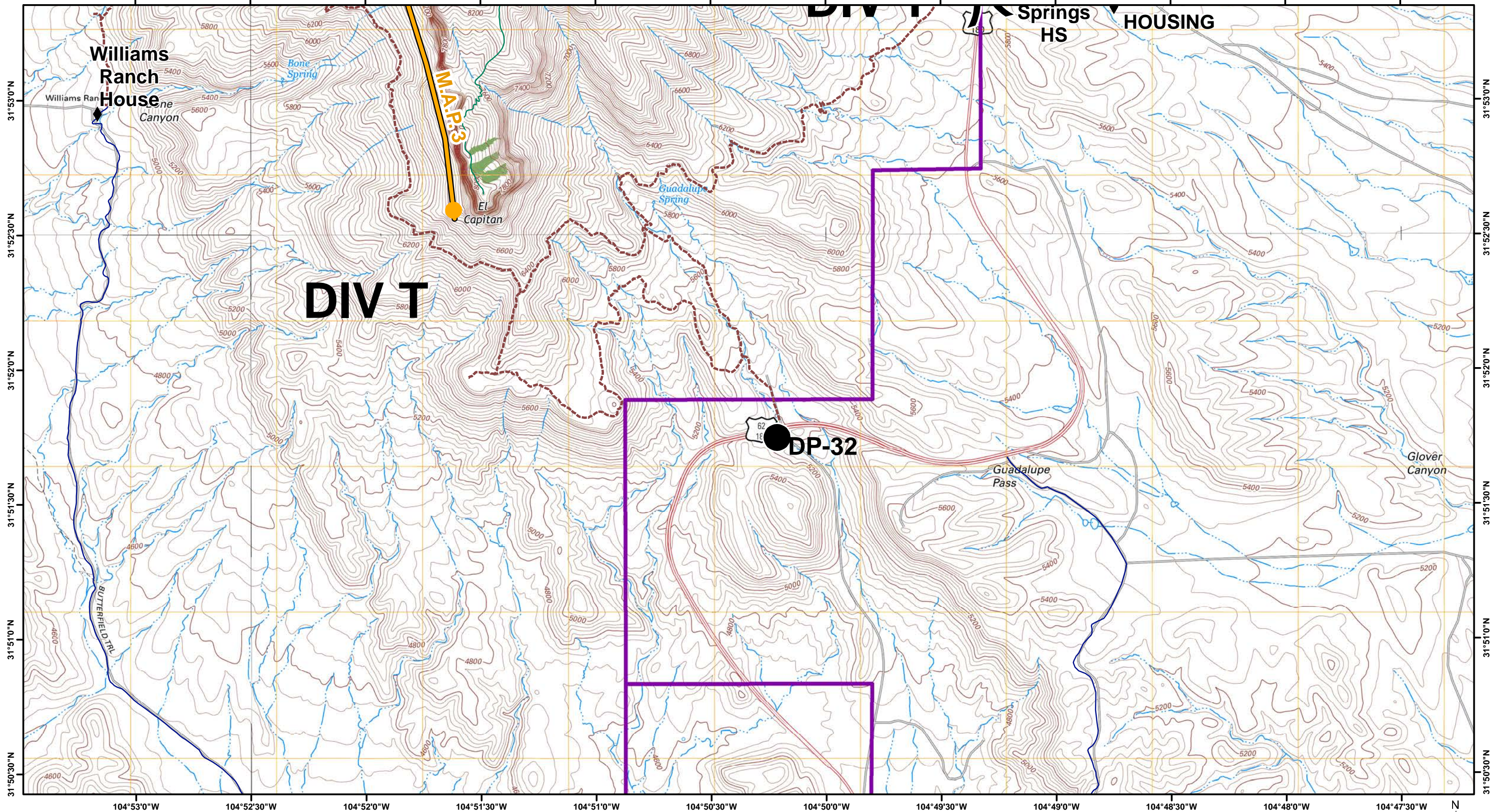


North American Datum 1983, Zone 13N

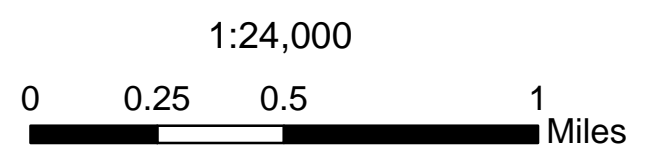


Team 5 GIS  
May 28, 2016  
21:40 Hours





- ( ) Division
- Uncontrolled Fire Edge
- XX XX Completed Dozer Line
- Completed Line
- M.A.P.
- Driveable Roads
- Non Driveable Roads
- Trails Official
- Permanent Stream
- Permanent Stream - NO retardant
- Guadalupe Mtn NP
- BLM Land
- Mixed Conifer
- Owl PAC
- Drop Point
- Helispot
- Mobile Weather Unit
- Repeater
- Water Source
- Repeater - Non USE
- vars



North American Datum 1983, Zone 13N



Team 5 GIS  
May 28, 2016  
21:40 Hours