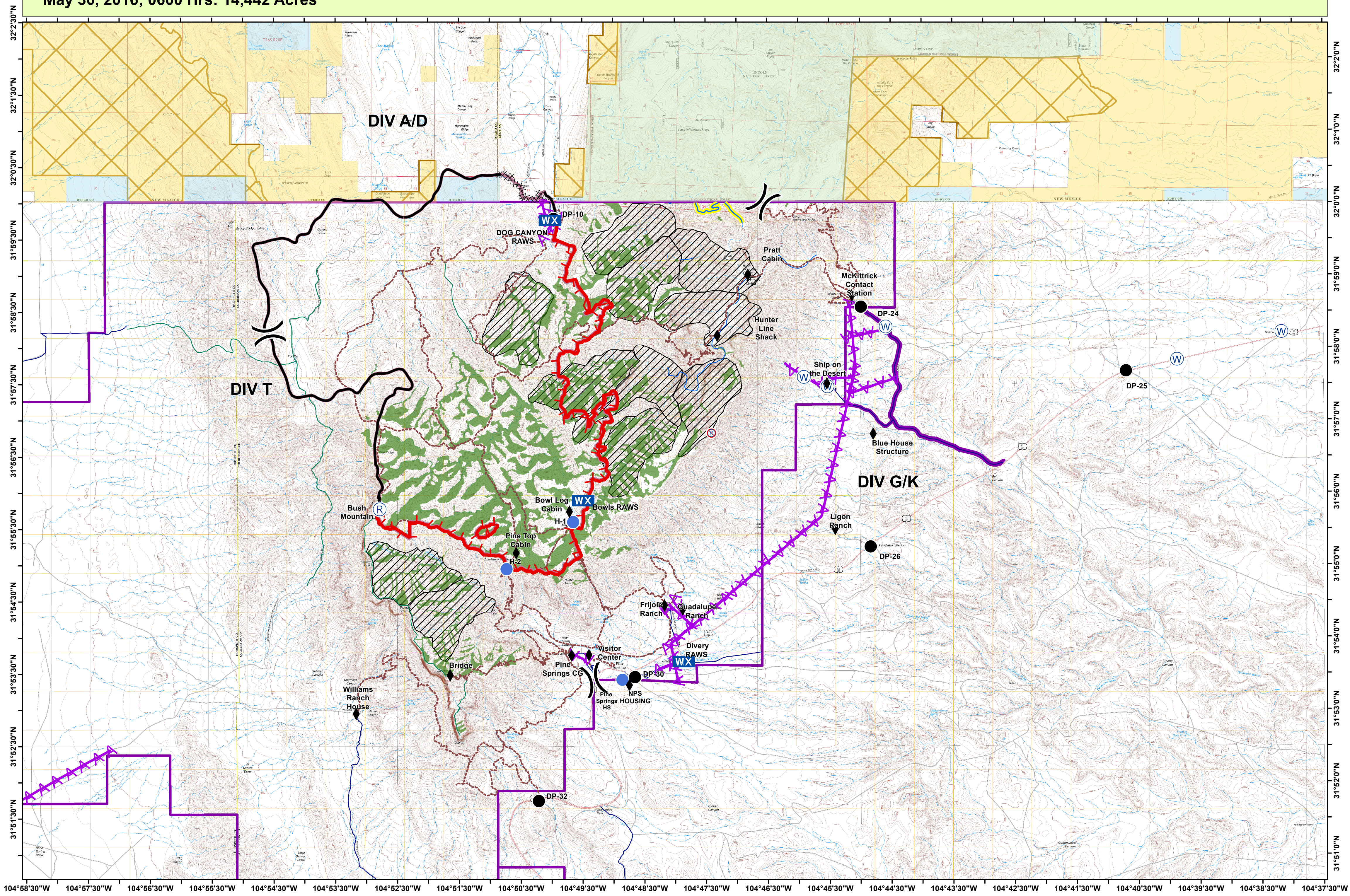


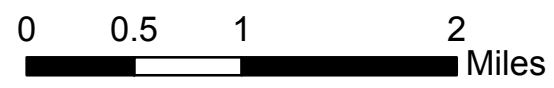
OPERATIONS MAP

May 30, 2016; 0600 Hrs: 14,442 Acres

COYOTE FIRE TX-GUP-000208



1:55,000



Division

- Uncontrolled Fire Edge
- Completed Dozer Line
- Completed Line

- Drop Point
- Helispot
- ⓧ Mobile Weather Unit
- Ⓢ Repeater

- Ⓢ Water Source
- Ⓢ Repeater - Non USE
- ◆ VARS

- Driveable Roads
- Non Driveable Roads
- Trails Official
- Permanent Stream

- Permanent Stream - NO retardant
- Powerlines
- Guadalupe Mtn NP
- BLM Land

- USFS
- Private
- State

- Mixed Conifer
- Owl PAC