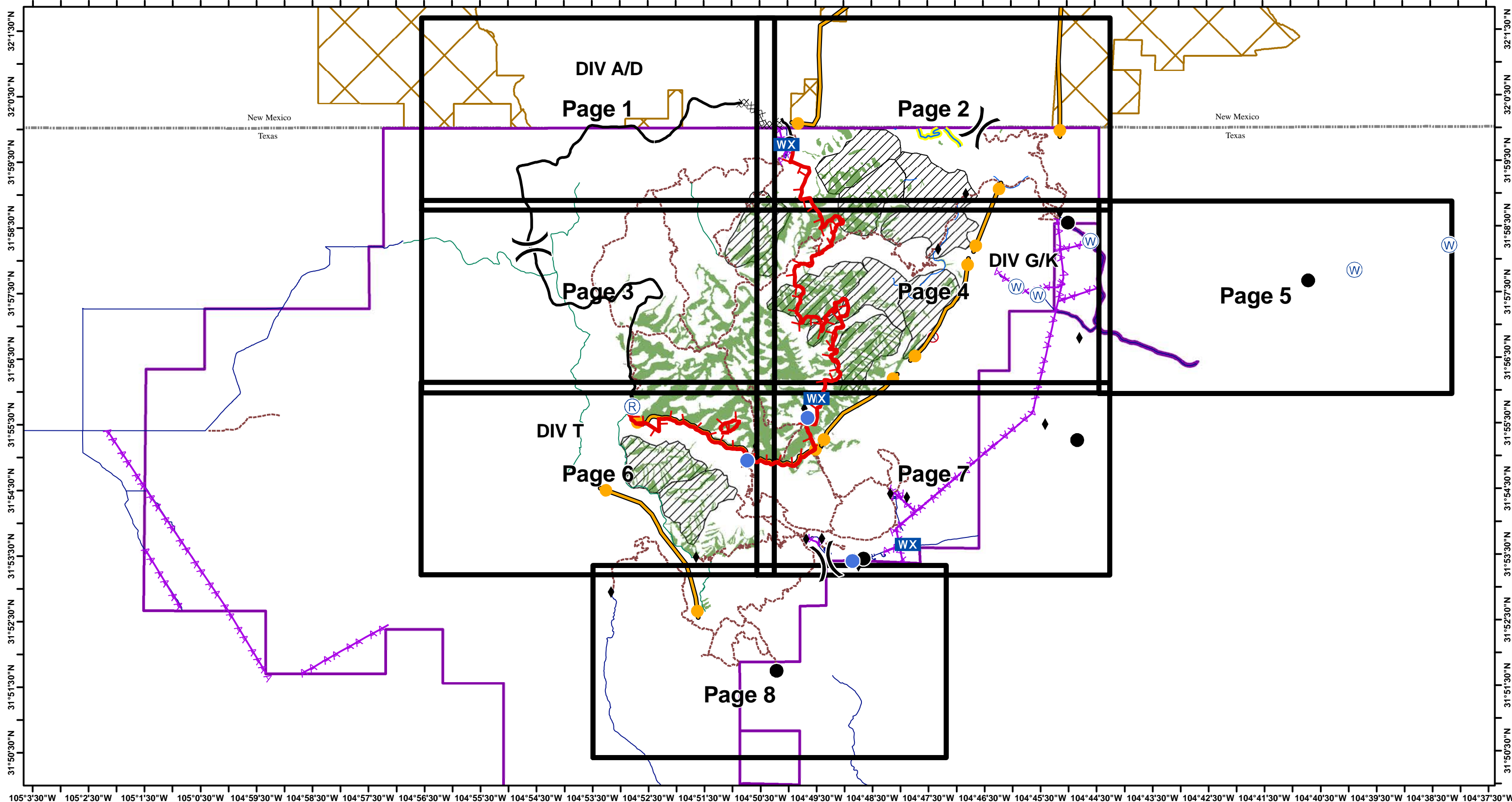


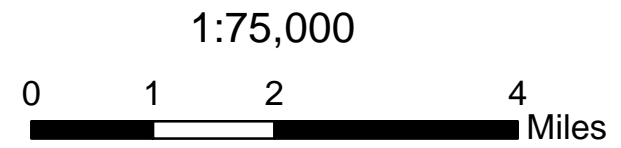
IAP Coyote Fire

May 30, 2016; 0600 Hrs: 14,442 Acres

TX-GUP-000208



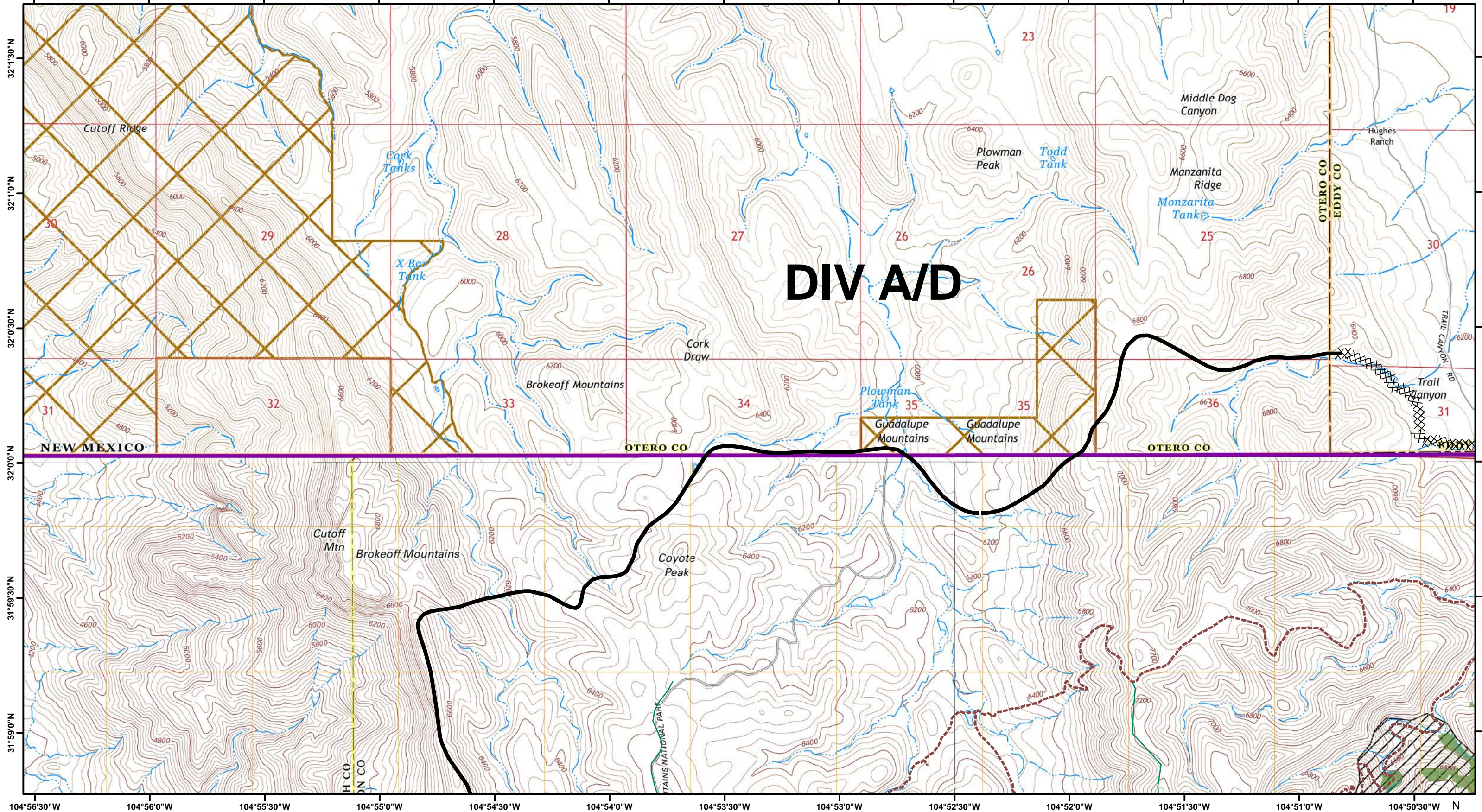
- | | | | |
|------------------------|---------------------------------|------------------|---------------------|
| Division | Non Driveable Roads | Guadalupe Mtn NP | Mobile Weather Unit |
| Uncontrolled Fire Edge | Trails Official | BLM Land | Repeater |
| Completed Dozer Line | Permanent Stream | Mixed Conifer | Water Source |
| Completed Line | Permanent Stream - NO retardant | Owl PAC | Repeater - Non USE |
| M.A.P. | State Boundaries | Drop Point | vars |
| Driveable Roads | Powerlines | Helispot | |



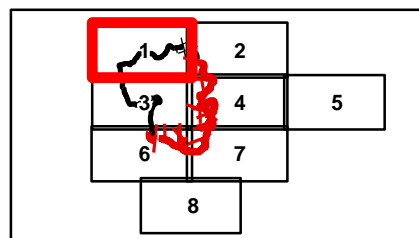
North American Datum 1983, Zone 13N



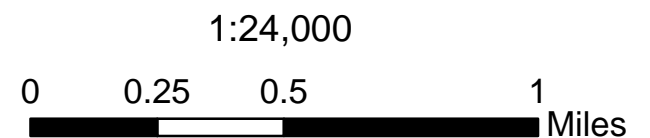
Team 5 GIS
May 27, 2016
2320 Hours



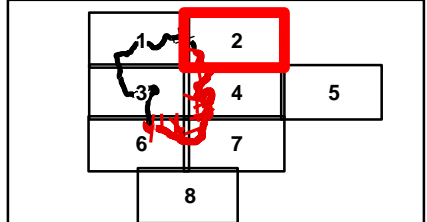
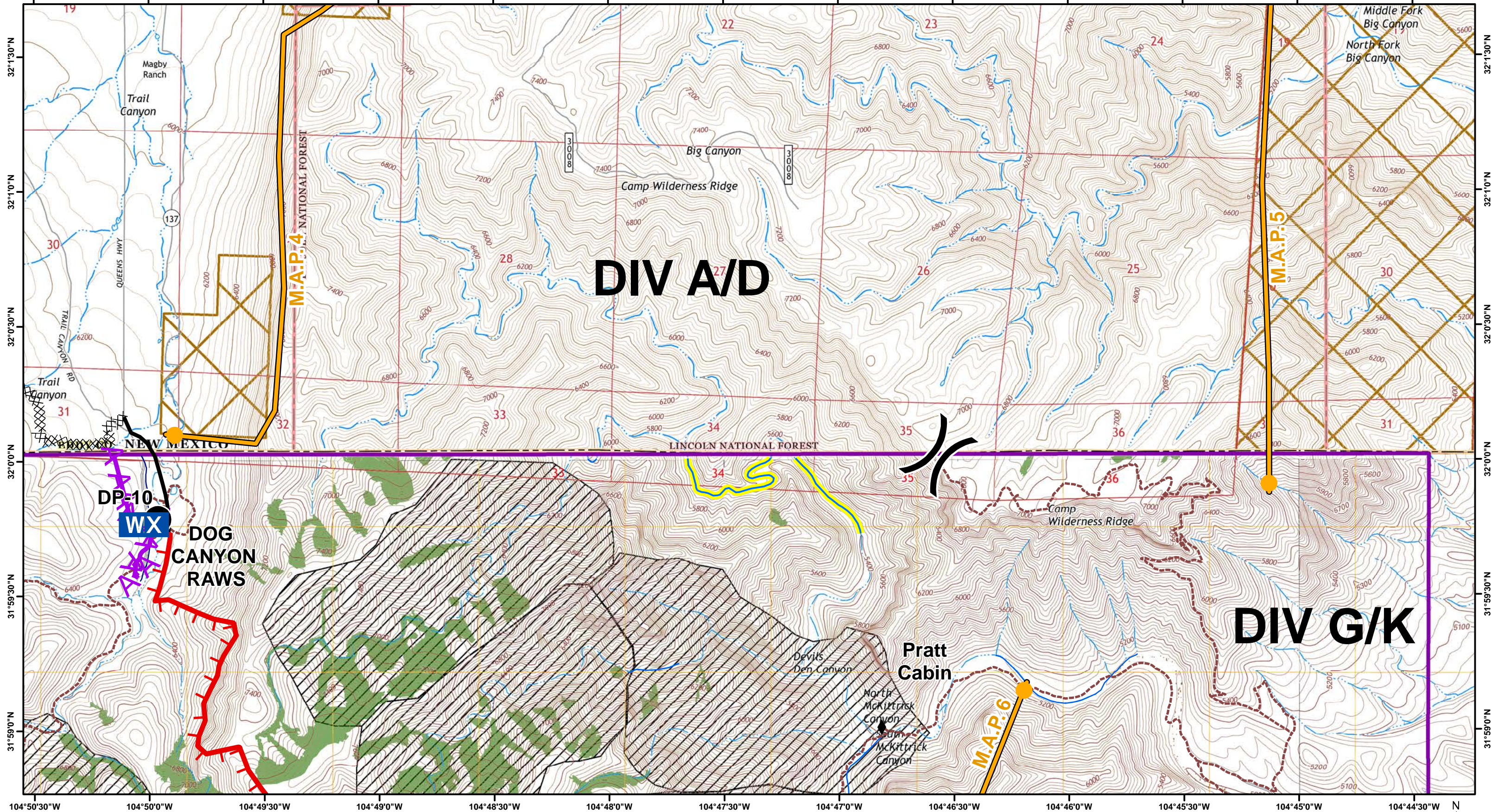
DIV A/D



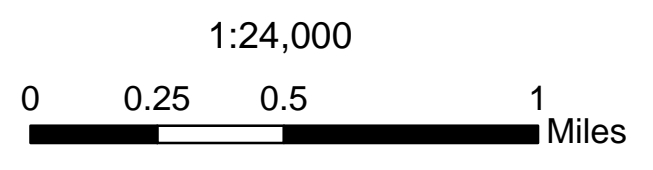
- Division
- Uncontrolled Fire Edge
- Completed Dozer Line
- Completed Line
- M.A.P.
- Driveable Roads
- Non Driveable Roads
- Trails Official
- Permanent Stream
- Permanent Stream - NO retardant
- State Boundaries
- Powerlines
- Guadalupe Mtn NP
- BLM Land
- Mixed Conifer
- Owl PAC
- Drop Point
- Helispot
- Mobile Weather Unit
- Repeater
- Water Source
- Repeater - Non USE
- vars

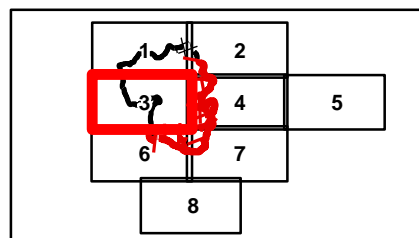
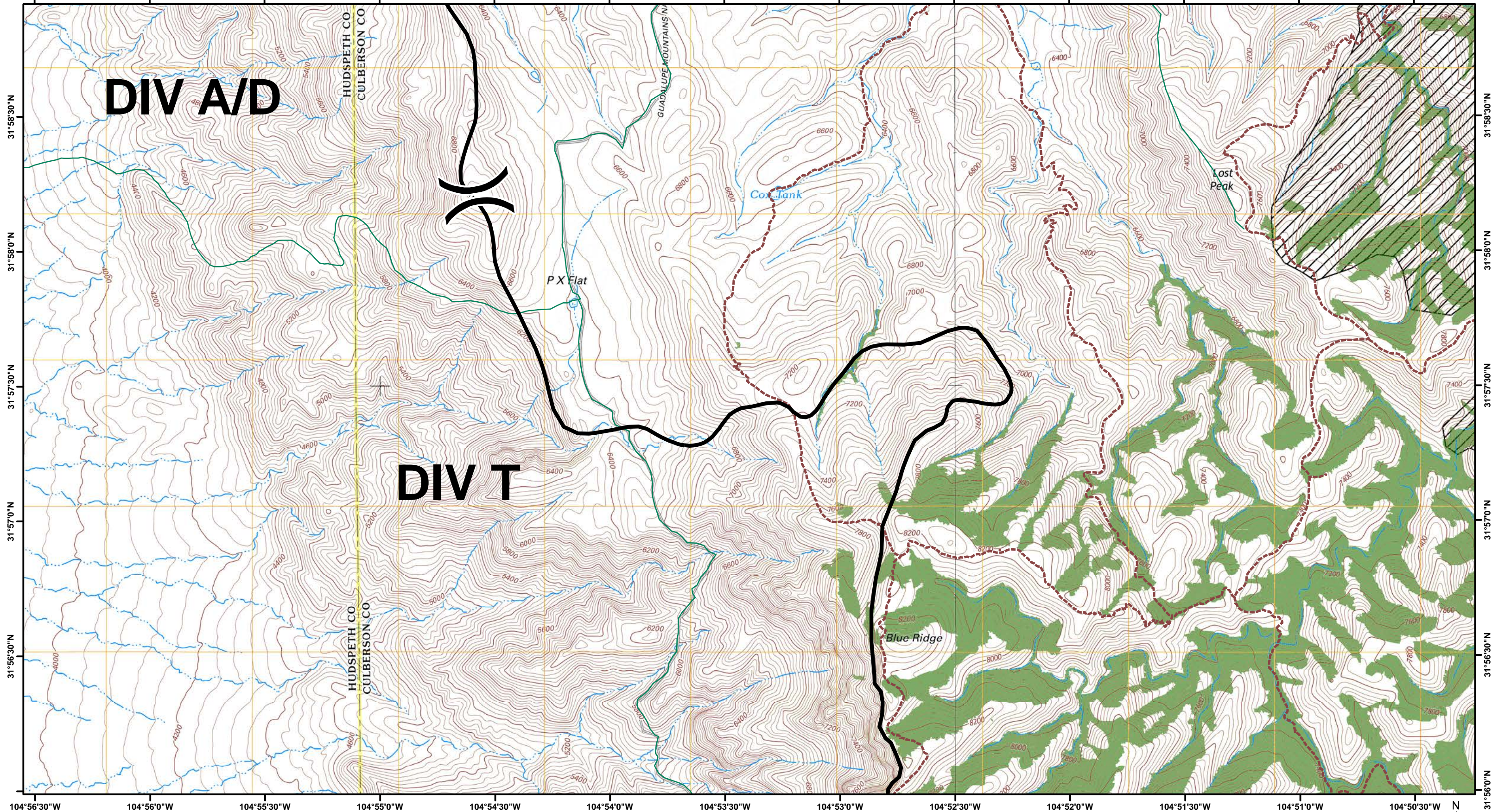


Team 5 GIS
May 28, 2016
21:40 Hours



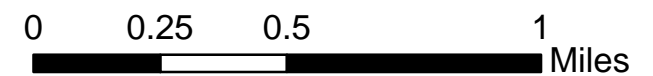
- | | | | | | | | |
|--|------------------------|--|---------------------------------|--|------------------|--|---------------------|
| | Division | | Non Driveable Roads | | Guadalupe Mtn NP | | Mobile Weather Unit |
| | Uncontrolled Fire Edge | | Trails Official | | BLM Land | | Repeater |
| | Completed Dozer Line | | Permanent Stream | | Mixed Conifer | | Water Source |
| | Completed Line | | Permanent Stream - NO retardant | | Owl PAC | | Repeater - Non USE |
| | M.A.P. | | State Boundaries | | Drop Point | | vars |
| | Driveable Roads | | Powerlines | | Helispot | | |





- Division
- Uncontrolled Fire Edge
- Completed Dozer Line
- Completed Line
- M.A.P.
- Driveable Roads
- Non Driveable Roads
- Trails Official
- Permanent Stream
- Permanent Stream - NO retardant
- State Boundaries
- Powerlines
- Guadalupe Mtn NP
- BLM Land
- Mixed Conifer
- Owl PAC
- Drop Point
- Helispot
- Mobile Weather Unit
- Repeater
- Water Source
- Repeater - Non USE
- vars

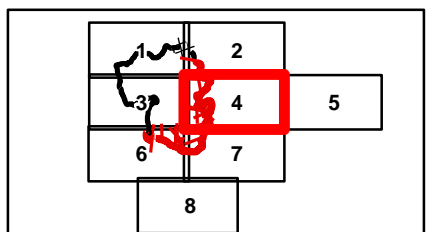
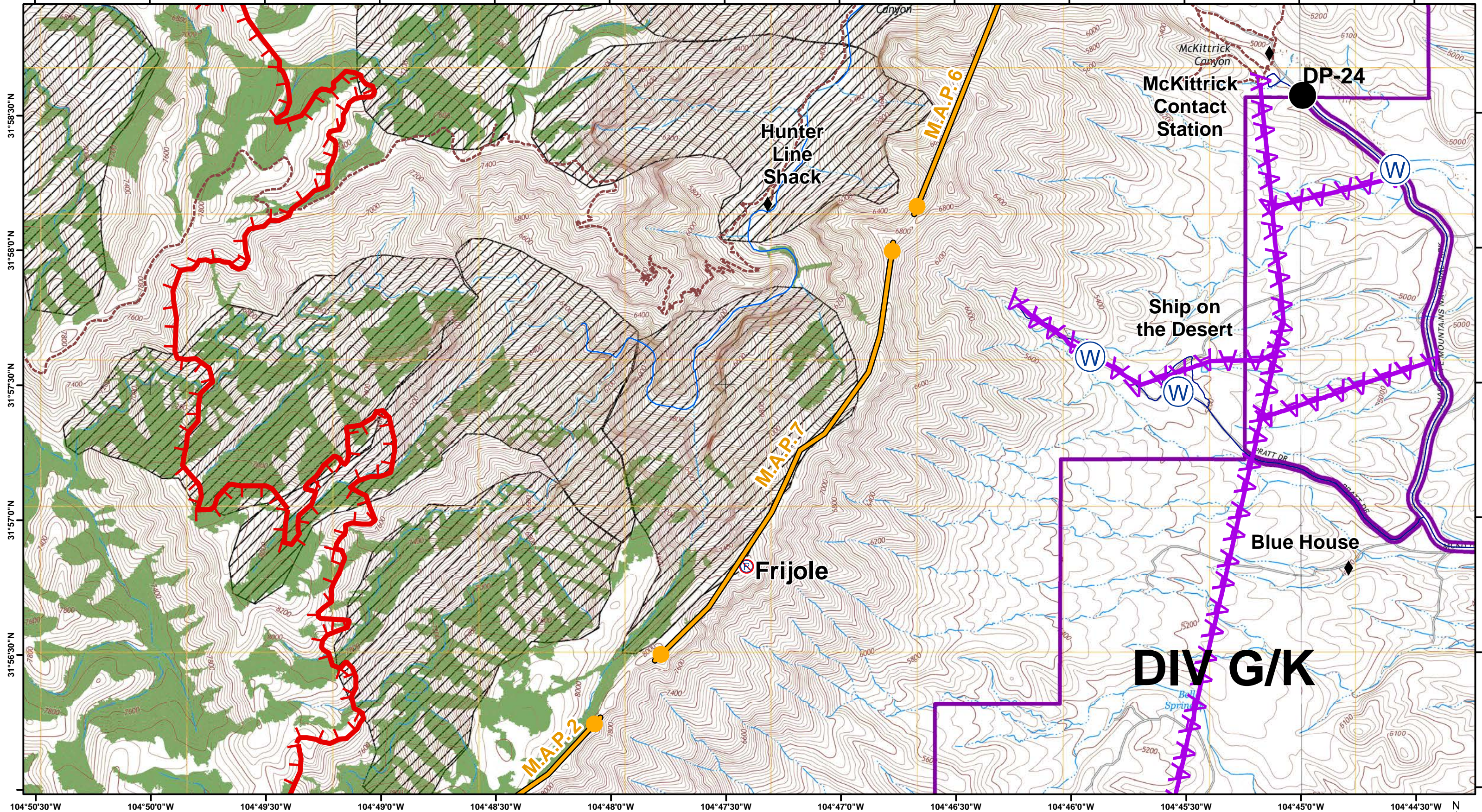
1:24,000



North American Datum 1983, Zone 13N

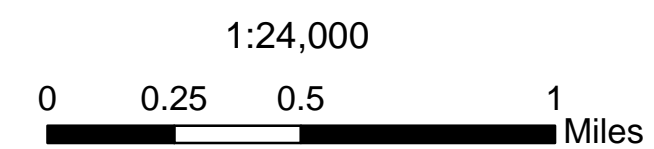


Team 5 GIS
May 28, 2016
21:40 Hours



- () Division
- ▬ Uncontrolled Fire Edge
- XX XX Completed Dozer Line
- ▬ Completed Line
- ▬ M.A.P.
- ▬ Driveable Roads
- ▬ Non Driveable Roads
- ▬ Trails Official
- ▬ Permanent Stream
- ▬ Permanent Stream - NO retardant
- ▬ State Boundaries
- ▬ Powerlines
- ▭ Guadalupe Mtn NP
- ▭ BLM Land
- ▭ Mixed Conifer
- ▭ Owl PAC
- Drop Point
- Helispot

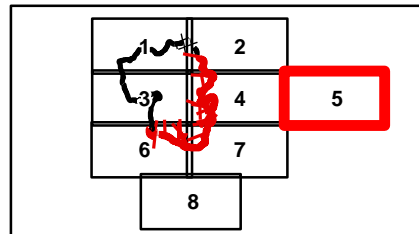
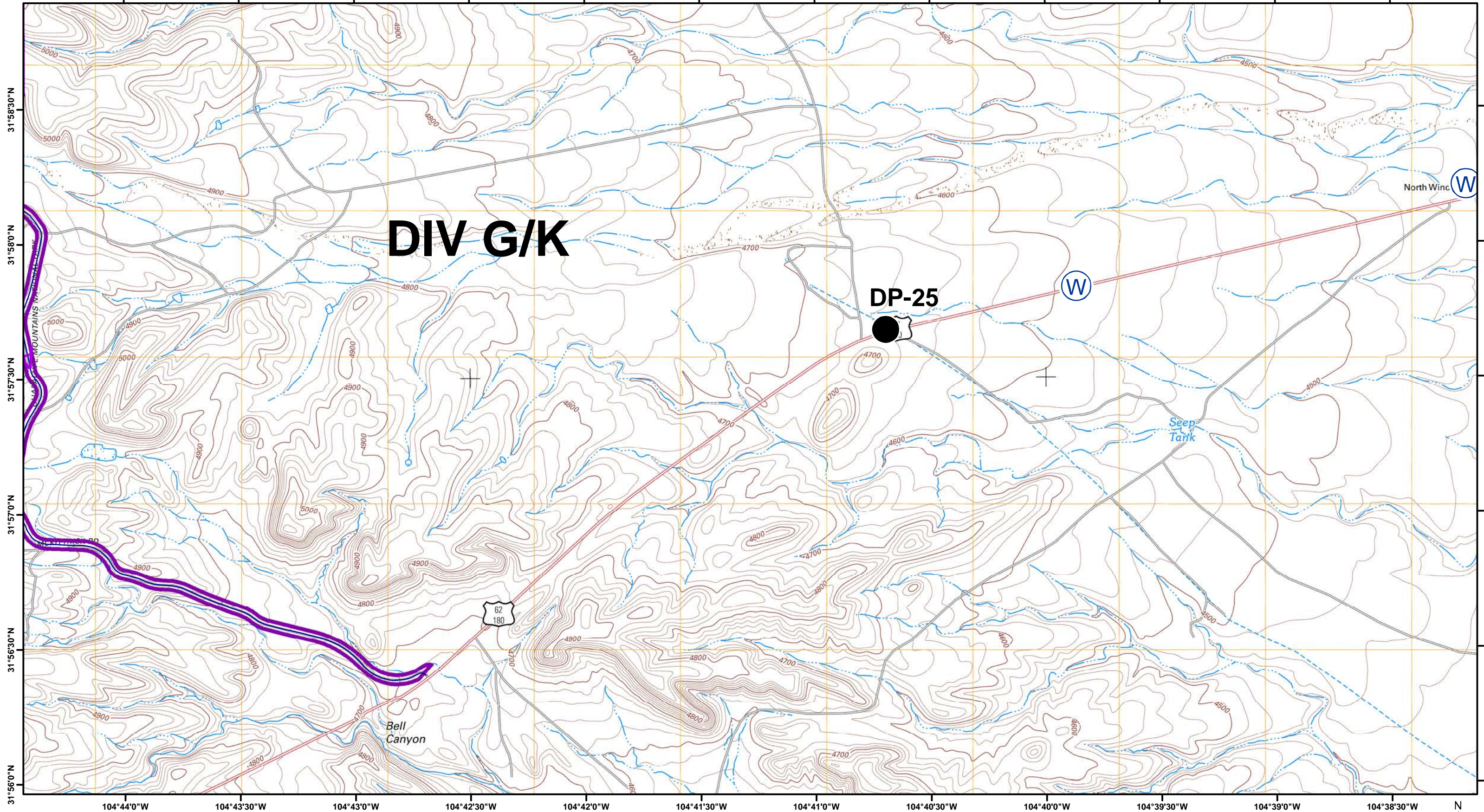
- WX Mobile Weather Unit
- Ⓡ Repeater
- Ⓢ Water Source
- Ⓡ Repeater - Non USE
- ♦ vars



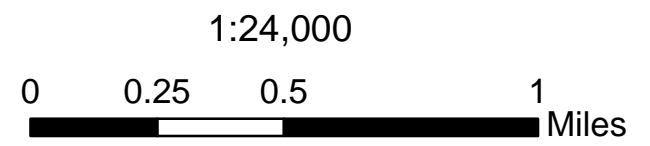
North American Datum 1983, Zone 13N



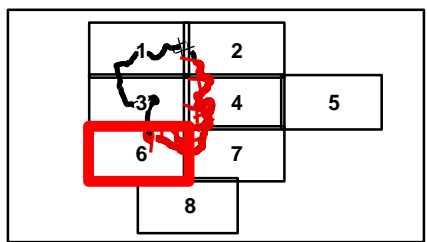
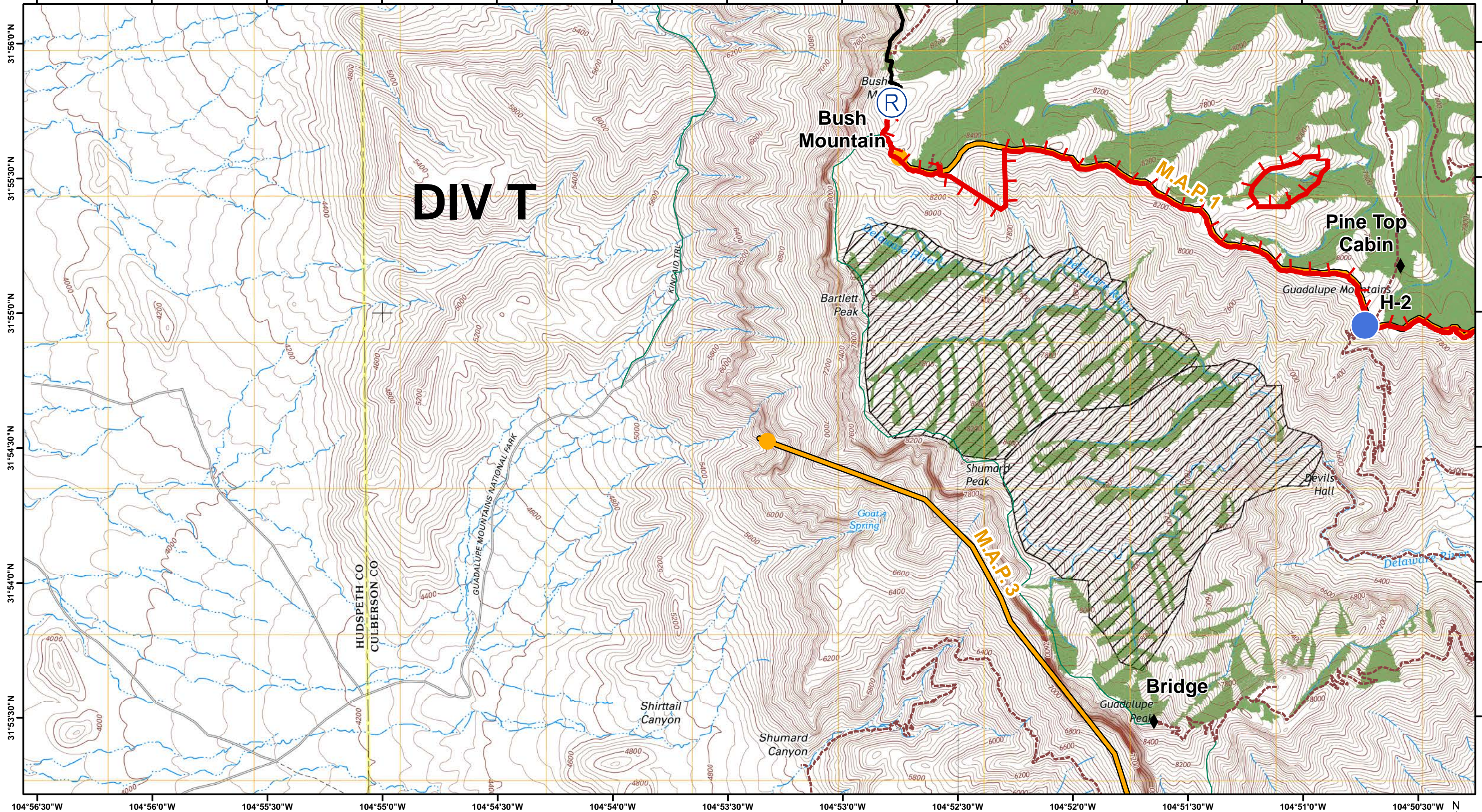
Team 5 GIS
May 28, 2016
21:40 Hours



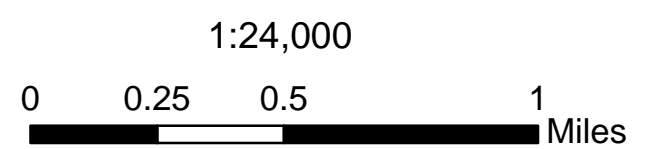
- | | | | | | | | |
|--|------------------------|--|---------------------------------|--|------------------|--|---------------------|
| | Division | | Non Driveable Roads | | Guadalupe Mtn NP | | Mobile Weather Unit |
| | Uncontrolled Fire Edge | | Trails Official | | BLM Land | | Repeater |
| | Completed Dozer Line | | Permanent Stream | | Mixed Conifer | | Water Source |
| | Completed Line | | Permanent Stream - NO retardant | | Owl PAC | | Repeater - Non USE |
| | M.A.P. | | State Boundaries | | Drop Point | | vars |
| | Driveable Roads | | Powerlines | | Helispot | | |

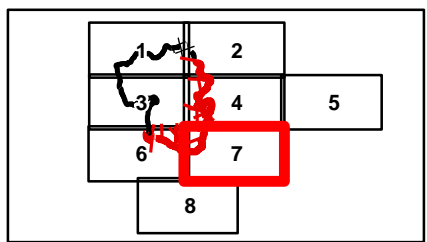
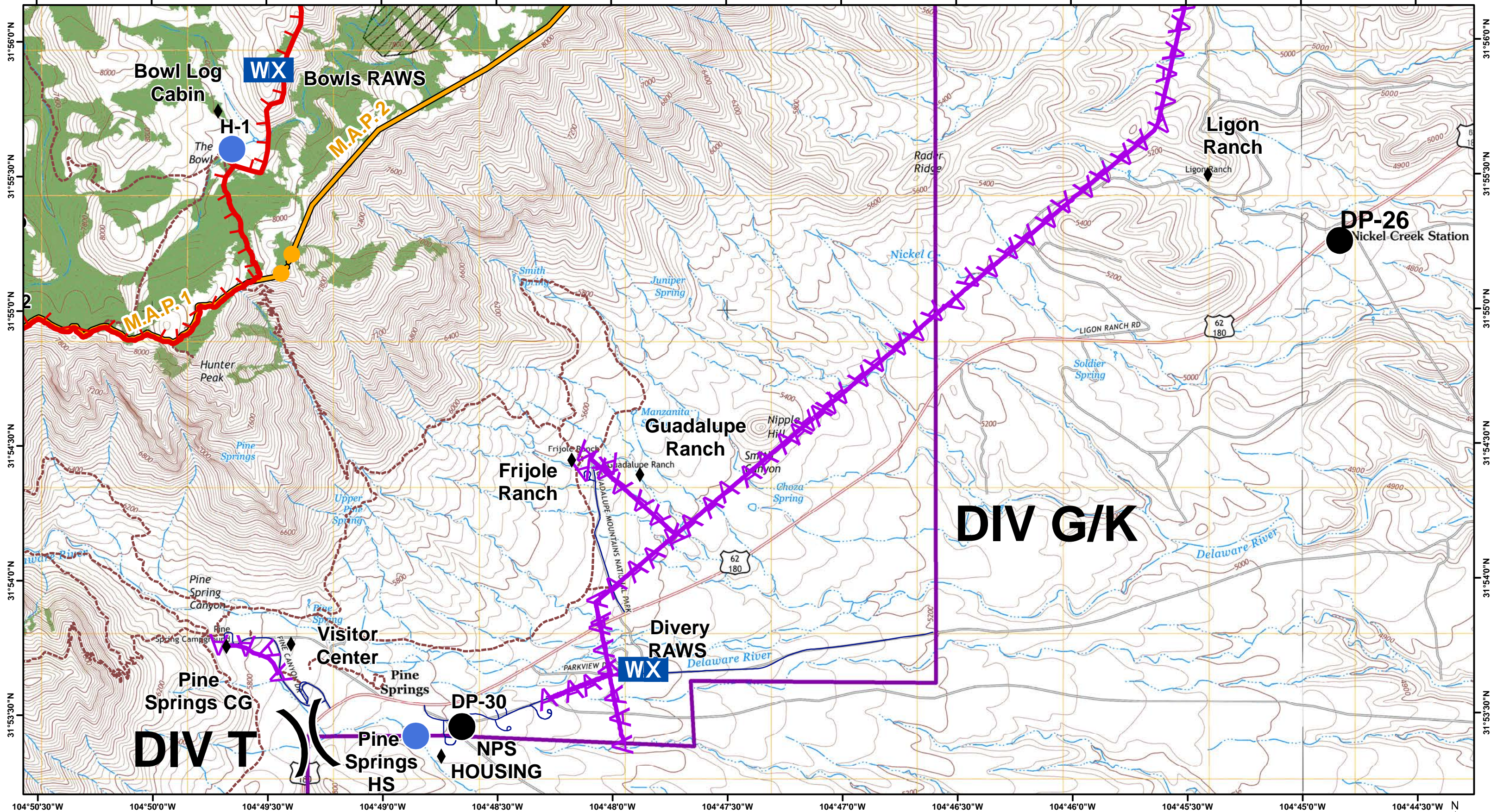


Team 5 GIS
 May 28, 2016
 21:40 Hours

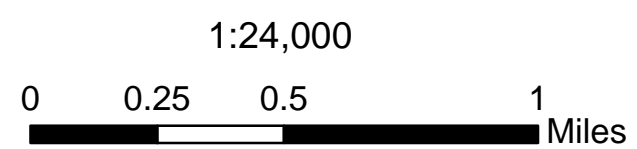


- Division
- Uncontrolled Fire Edge
- Completed Dozer Line
- Completed Line
- M.A.P.
- Driveable Roads
- Non Driveable Roads
- Trails Official
- Permanent Stream
- Permanent Stream - NO retardant
- State Boundaries
- Powerlines
- Guadalupe Mtn NP
- BLM Land
- Mixed Conifer
- Owl PAC
- Drop Point
- Helispot
- Mobile Weather Unit
- Repeater
- Water Source
- Repeater - Non USE
- vars

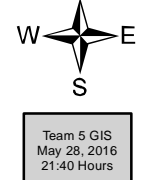


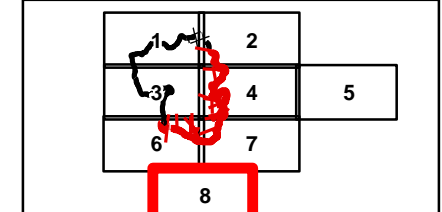
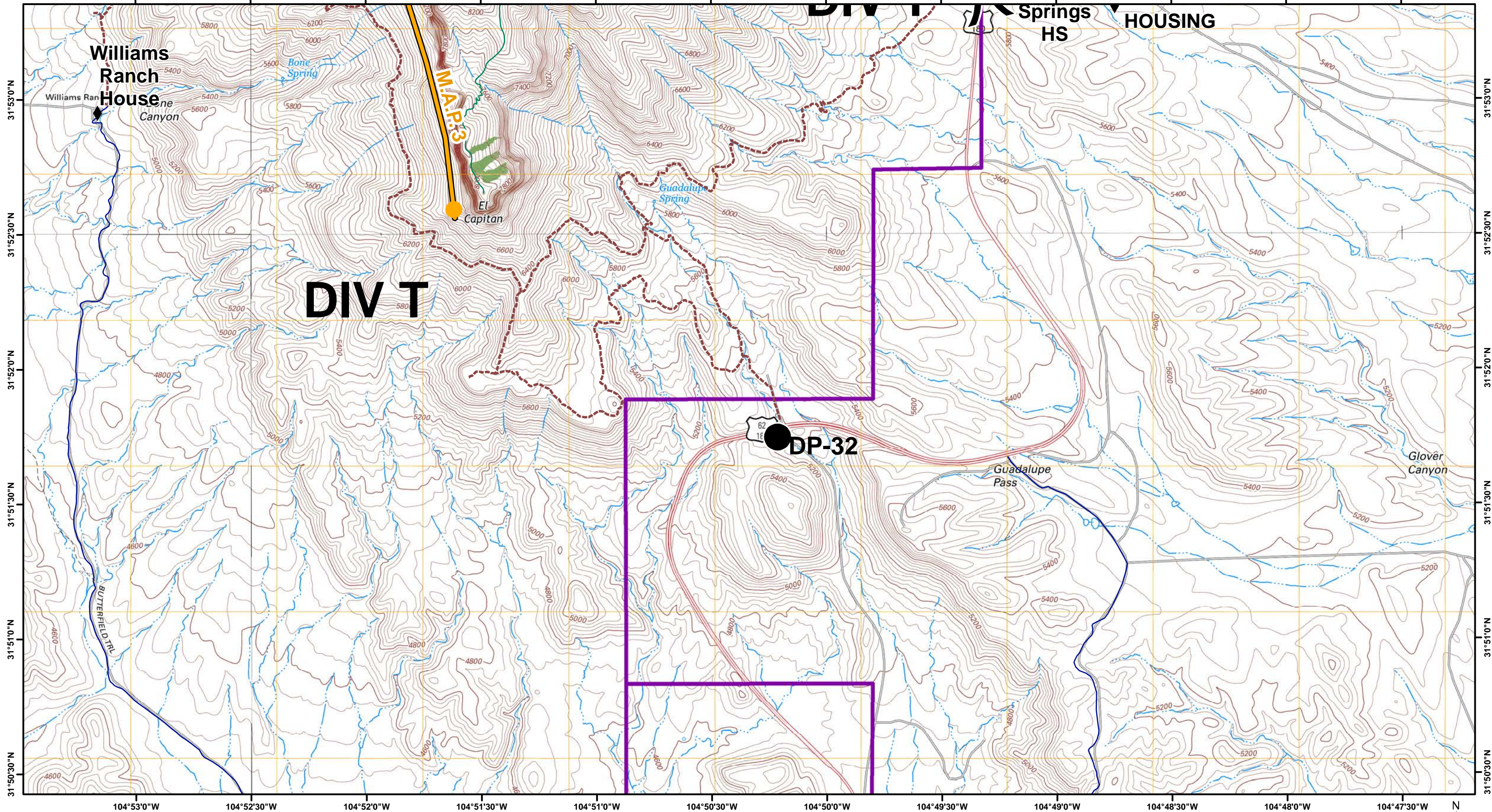


- Division
- Uncontrolled Fire Edge
- Completed Dozer Line
- Completed Line
- M.A.P.
- Driveable Roads
- Non Driveable Roads
- Trails Official
- Permanent Stream
- Permanent Stream - NO retardant
- State Boundaries
- Powerlines
- Guadalupe Mtn NP
- BLM Land
- Mixed Conifer
- Owl PAC
- Drop Point
- Helispot
- Mobile Weather Unit
- Repeater
- Water Source
- Repeater - Non USE
- vars

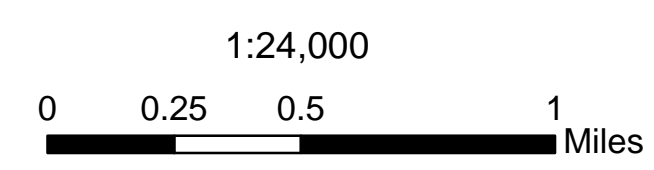


North American Datum 1983, Zone 13N





- Division
- Uncontrolled Fire Edge
- Completed Dozer Line
- Completed Line
- M.A.P.
- Driveable Roads
- Non Driveable Roads
- Trails Official
- Permanent Stream
- Permanent Stream - NO retardant
- State Boundaries
- Powerlines
- Guadalupe Mtn NP
- BLM Land
- Mixed Conifer
- Owl PAC
- Drop Point
- Helispot
- Mobile Weather Unit
- Repeater
- Water Source
- Repeater - Non USE
- vars



North American Datum 1983, Zone 13N