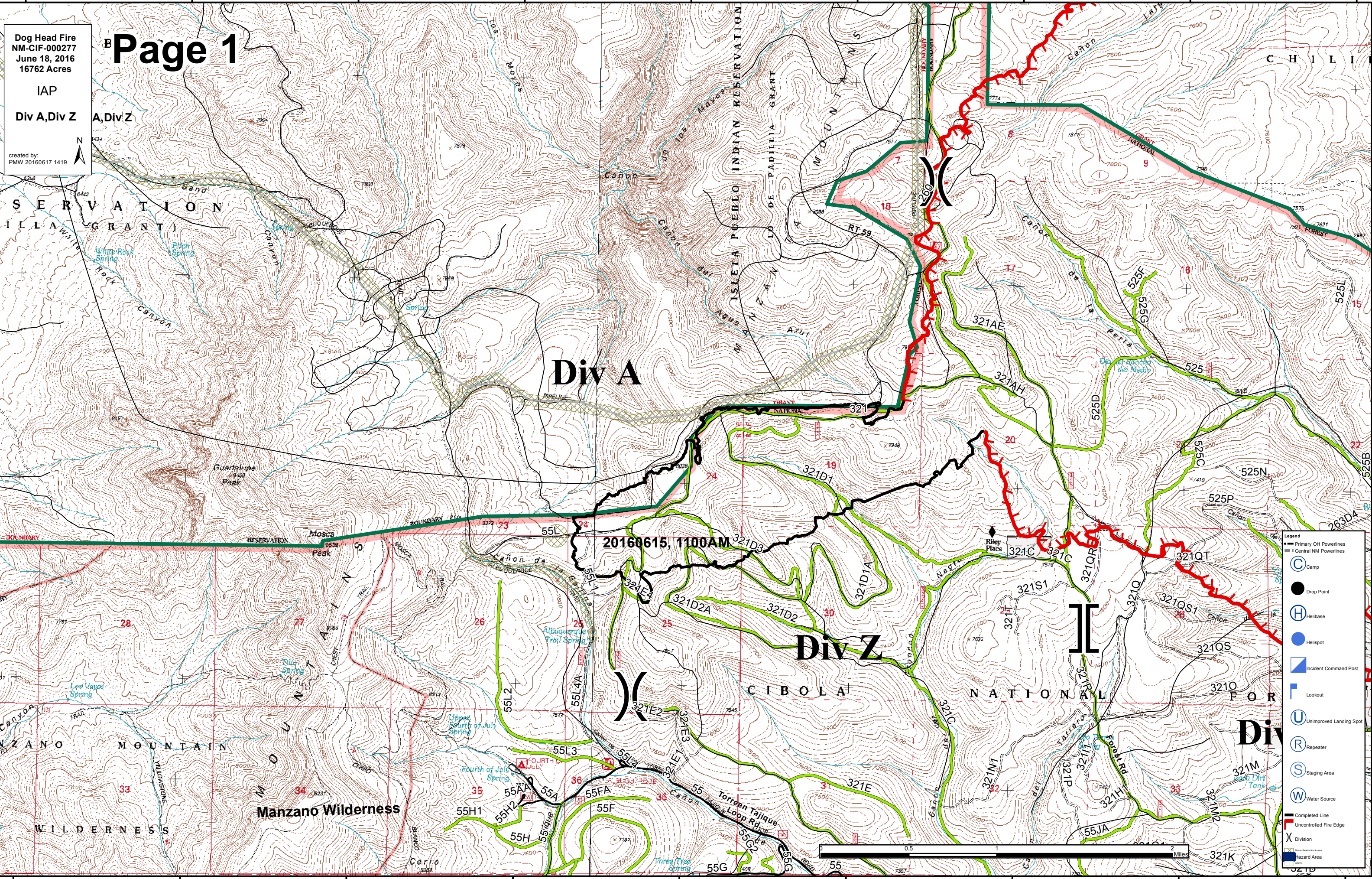


106°26'0"W 106°25'0"W 106°24'0"W 106°23'0"W 106°22'0"W 106°21'0"W 106°20'0"W 106°19'0"W 106°18'0"W



Dog Head Fire
NM-CIF-000277
June 18, 2016
16762 Acres
IAP
Div A, Div Z
A, Div Z
created by:
PMW 20160617 1419

Page 1

SERVATION
ILLA GRANT

Div A

Div Z

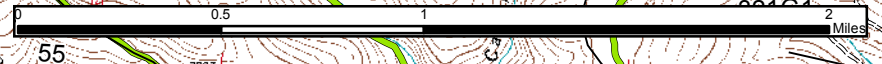
Div I

20160615, 1100AM

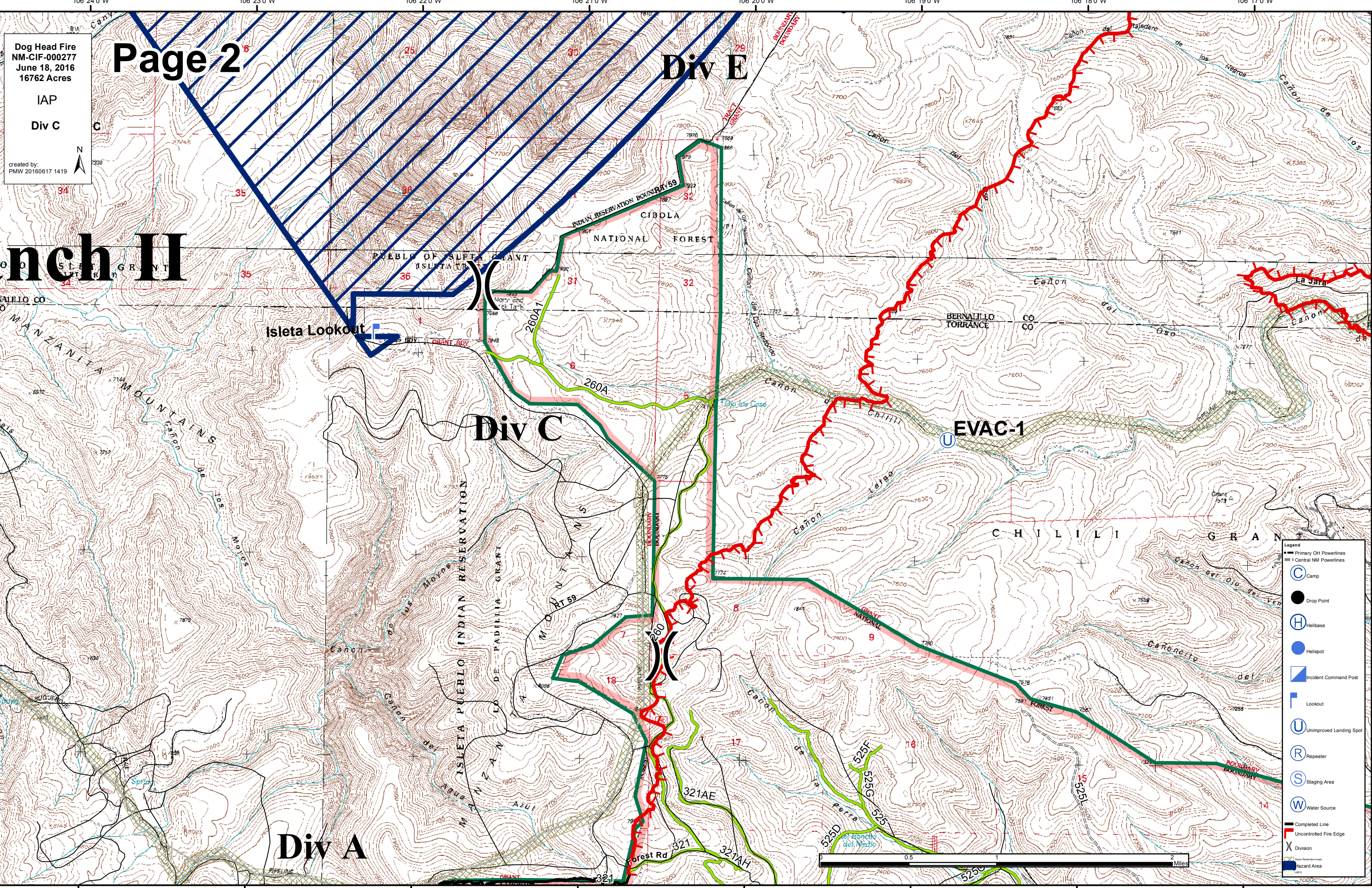
Manzano Wilderness

CIBOLA NATIONAL FOREST

- Legend
- Primary OH Powerlines
 - Central NM Powerlines
 - Camp
 - Drop Point
 - Helibase
 - Helispot
 - Incident Command Post
 - Lookout
 - Unimproved Landing Spot
 - Repeater
 - Staging Area
 - Water Source
 - Completed Line
 - Uncontrolled Fire Edge
 - Division
 - Hazard Area



106°26'0"W 106°25'0"W 106°24'0"W 106°23'0"W 106°22'0"W 106°21'0"W 106°20'0"W 106°19'0"W 106°18'0"W



Dog Head Fire
NM-CIF-000277
June 18, 2016
16762 Acres
IAP
Div C
created by:
PMW 20160617 1419

Page 2

Div E

Manzanilla Mountains

Isleta Lookout

Div C

EVAC-1

Div A

- Legend
- Primary OH Powerlines
 - Central NM Powerlines
 - Camp
 - Drop Point
 - Helibase
 - Helispot
 - Incident Command Post
 - Lookout
 - Unimproved Landing Spot
 - Repeater
 - Staging Area
 - Water Source
 - Completed Line
 - Uncontrolled Fire Edge
 - Division
 - Hazard Area



Dog Head Fire
NM-CIF-000277
June 18, 2016
16762 Acres
IAP
Div E
created by:
PMW 20160617 1419

Page 3

Div F

DP-30

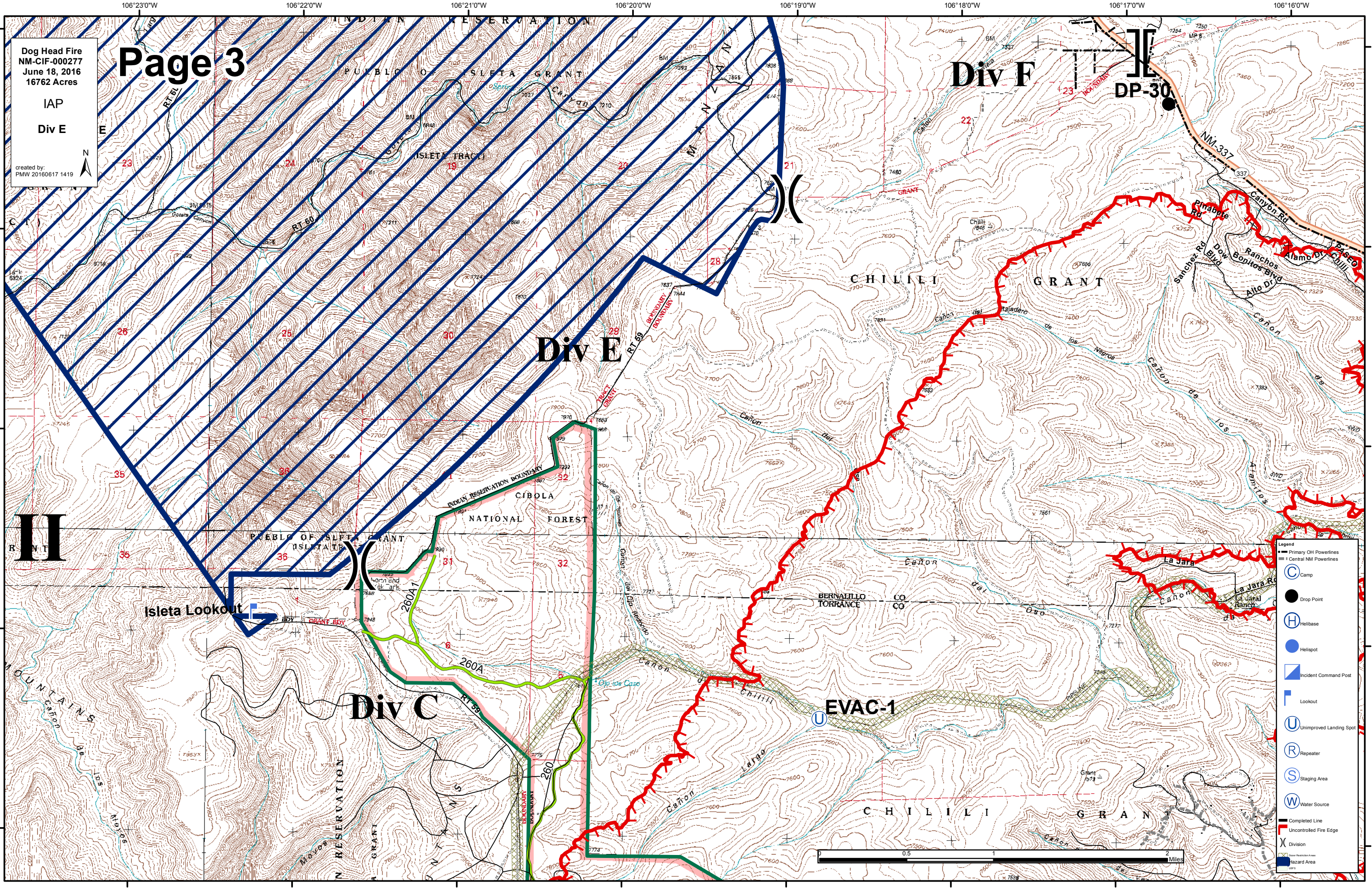
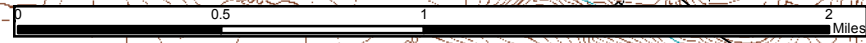
Div E

Div C

EVAC-1

Isleta Lookout

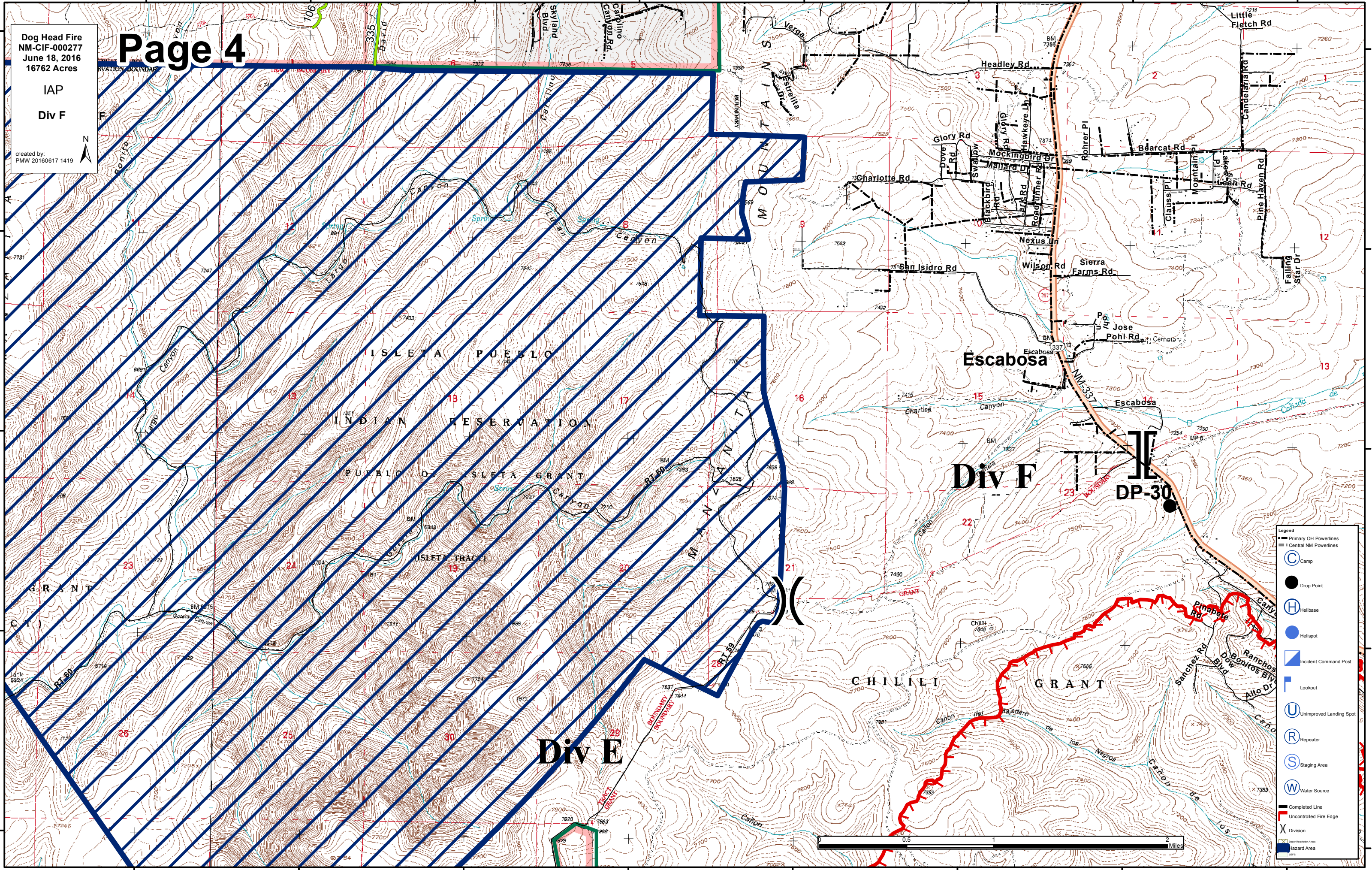
- Legend
- Primary OH Powerlines
 - Central NM Powerlines
 - Camp
 - Drop Point
 - Helibase
 - Helispot
 - Incident Command Post
 - Lookout
 - Unimproved Landing Spot
 - Repeater
 - Staging Area
 - Water Source
 - Completed Line
 - Uncontrolled Fire Edge
 - Division
 - Fire Reservation Boundary
 - Hazard Area



106°23'0"W 106°22'0"W 106°21'0"W 106°20'0"W 106°19'0"W 106°18'0"W 106°17'0"W 106°16'0"W

Dog Head Fire
NM-CIF-000277
June 18, 2016
16762 Acres
IAP
Div F
created by:
PMW 20160617 1419

Page 4

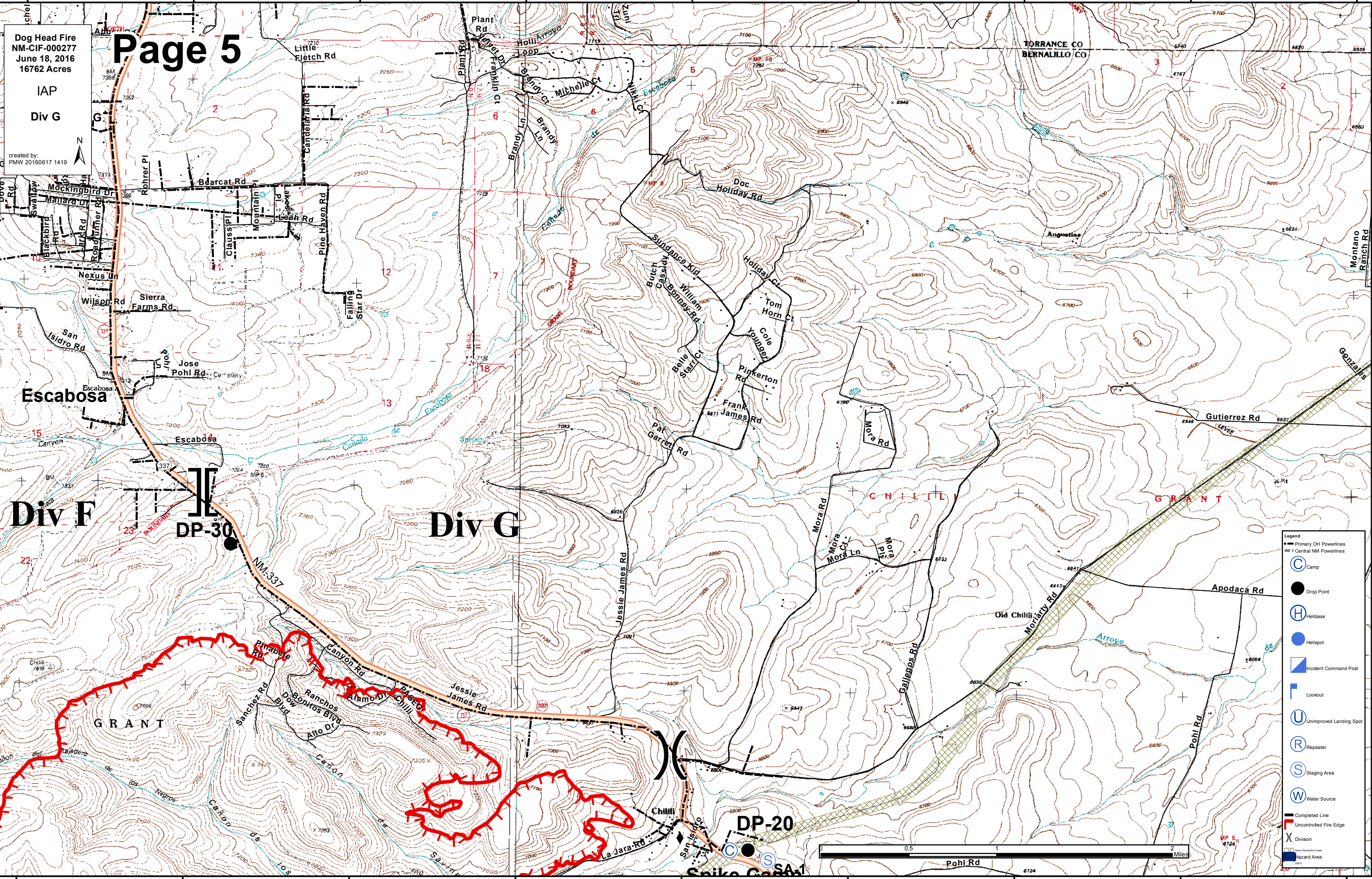


- Primary OH Powerlines
- Central NM Powerlines
- Camp
- Drop Point
- Helibase
- Helispot
- Incident Command Post
- Lookout
- Unimproved Landing Spot
- Repeater
- Staging Area
- Water Source
- Completed Line
- Uncontrolled Fire Edge
- Division
- Hazard Area

0.5 1 2 Miles

106°23'0"W 106°22'0"W 106°21'0"W 106°20'0"W 106°19'0"W 106°18'0"W 106°17'0"W 106°16'0"W

106°18'0"W 106°17'0"W 106°16'0"W 106°15'0"W 106°14'0"W 106°13'0"W 106°12'0"W 106°11'0"W 106°10'0"W



Page 5

Dog Head Fire
NM-CIF-000277
June 18, 2016
16762 Acres

IAP
Div G

created by:
PMW 20160617 1419



34°57'0"N

34°56'0"N

34°55'0"N

34°54'0"N

34°53'0"N

34°52'0"N

34°51'0"N

34°50'0"N

34°49'0"N

34°48'0"N

34°47'0"N

34°46'0"N

34°45'0"N

34°44'0"N

34°43'0"N

34°42'0"N

34°41'0"N

34°40'0"N

34°39'0"N

34°38'0"N

34°37'0"N

34°36'0"N

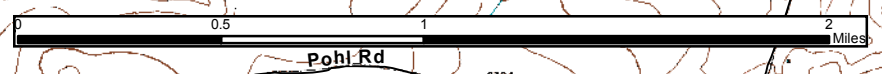
34°35'0"N

106°18'0"W 106°17'0"W 106°16'0"W 106°15'0"W 106°14'0"W 106°13'0"W 106°12'0"W 106°11'0"W 106°10'0"W

106°18'0"W 106°17'0"W 106°16'0"W 106°15'0"W 106°14'0"W 106°13'0"W 106°12'0"W 106°11'0"W 106°10'0"W

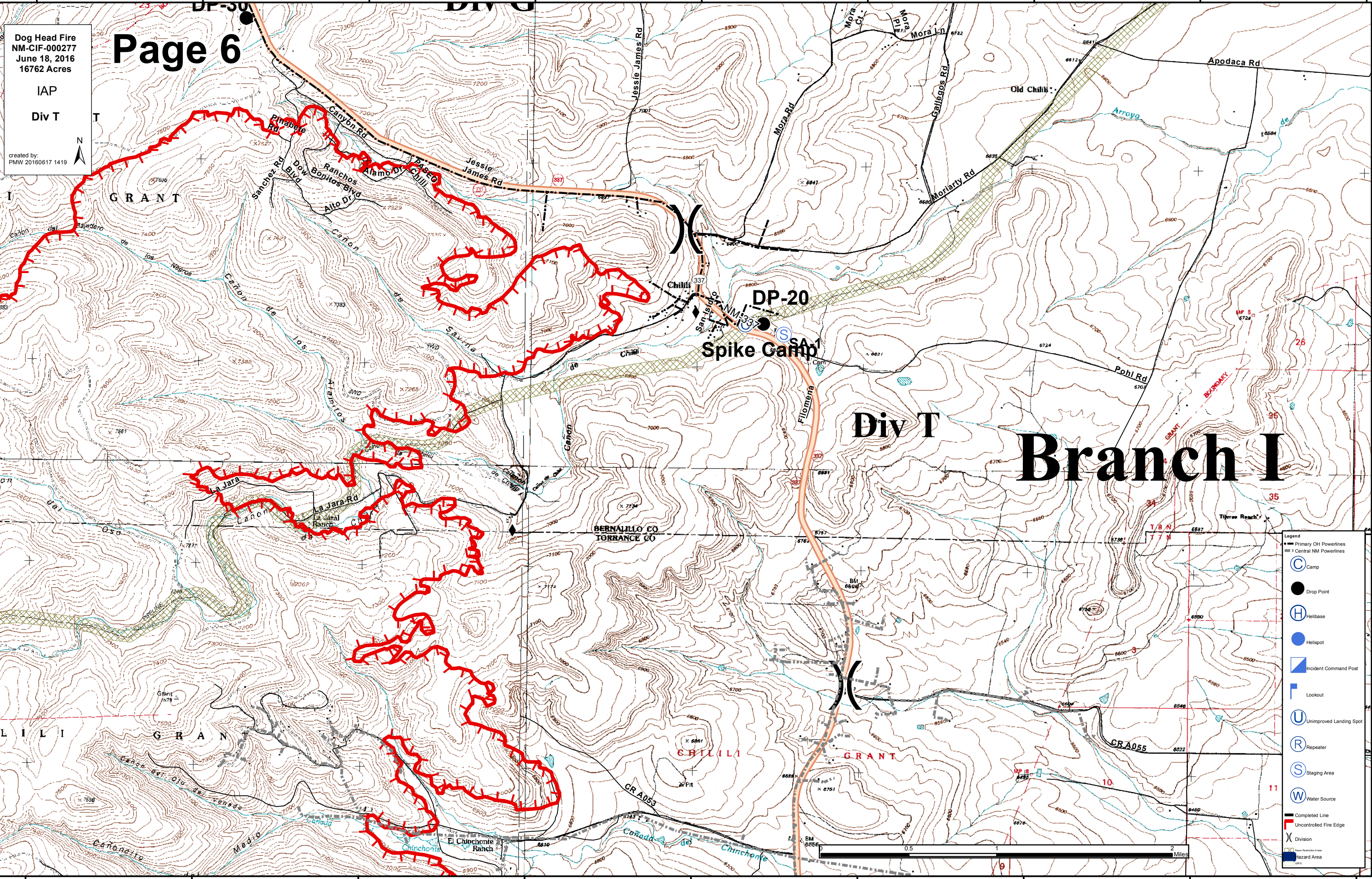
Legend

- Primary OH Powerlines
- Central NM Powerlines
- Camp
- Drop Point
- Helibase
- Helispot
- Incident Command Post
- Lookout
- Unimproved Landing Spot
- Repeater
- Staging Area
- Water Source
- Completed Line
- Uncontrolled Fire Edge
- Division
- Unimproved Road
- Hazard Area



106°18'0"W 106°17'0"W 106°16'0"W 106°15'0"W 106°14'0"W 106°13'0"W 106°12'0"W 106°11'0"W 106°10'0"W

106°18'0"W 106°17'0"W 106°16'0"W 106°15'0"W 106°14'0"W 106°13'0"W 106°12'0"W 106°11'0"W 106°10'0"W

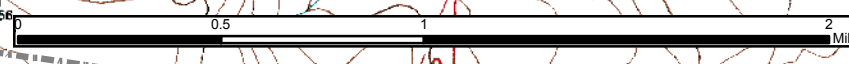


Dog Head Fire
NM-CIF-000277
June 18, 2016
16762 Acres
IAP
Div T
created by:
PMW 20160617 1419

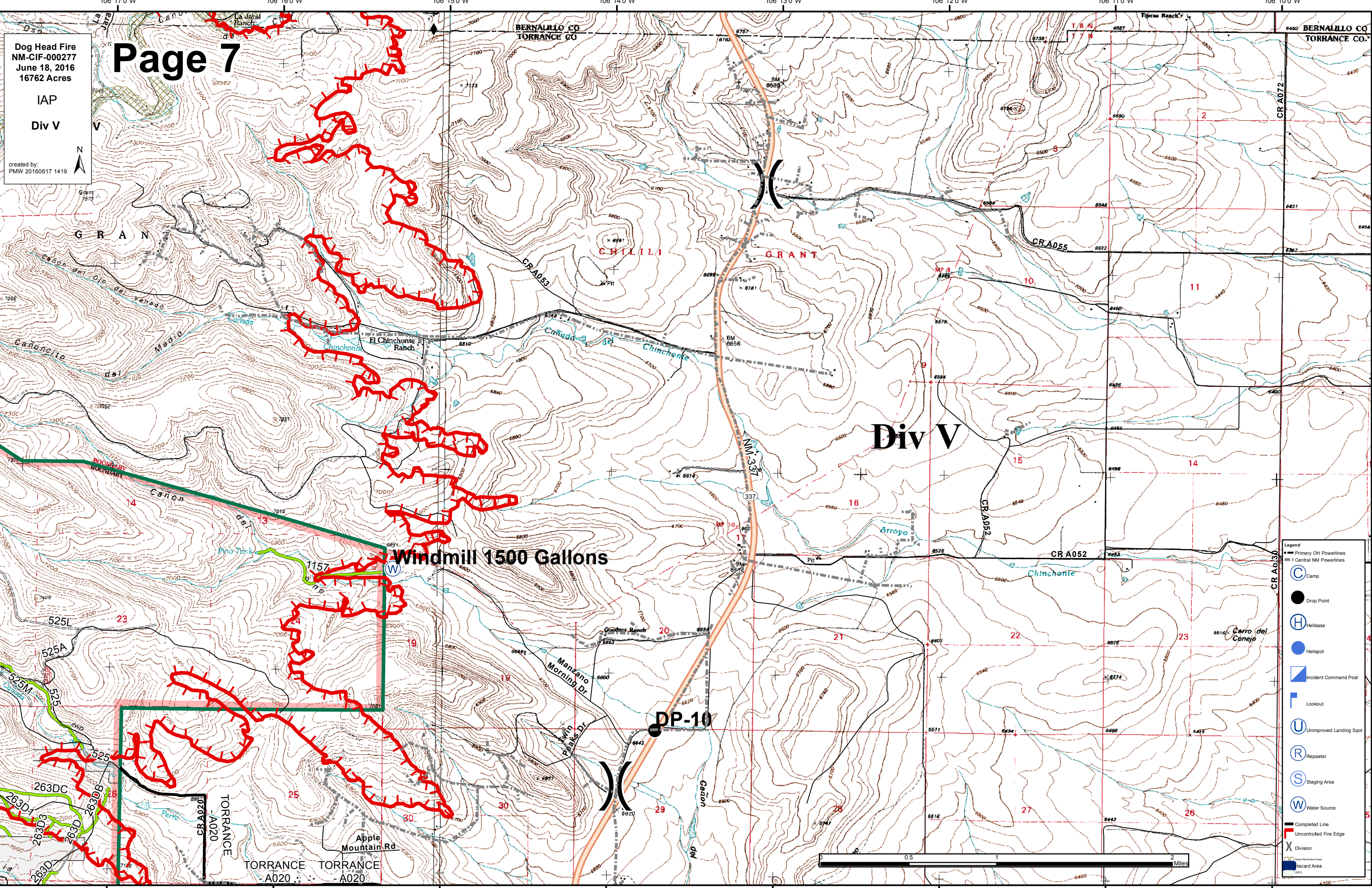
Page 6



- Legend**
- Primary OH Powerlines
 - Central NM Powerlines
 - Camp
 - Drop Point
 - Helibase
 - Helispot
 - Incident Command Post
 - Lookout
 - Unimproved Landing Spot
 - Repeater
 - Staging Area
 - Water Source
 - Completed Line
 - Uncontrolled Fire Edge
 - Division
 - Hazard Area



106°18'0"W 106°17'0"W 106°16'0"W 106°15'0"W 106°14'0"W 106°13'0"W 106°12'0"W 106°11'0"W 106°10'0"W



Dog Head Fire
NM-CIF-000277
June 18, 2016
16762 Acres
IAP
Div V
created by:
PMW 20160617 1419

Page 7

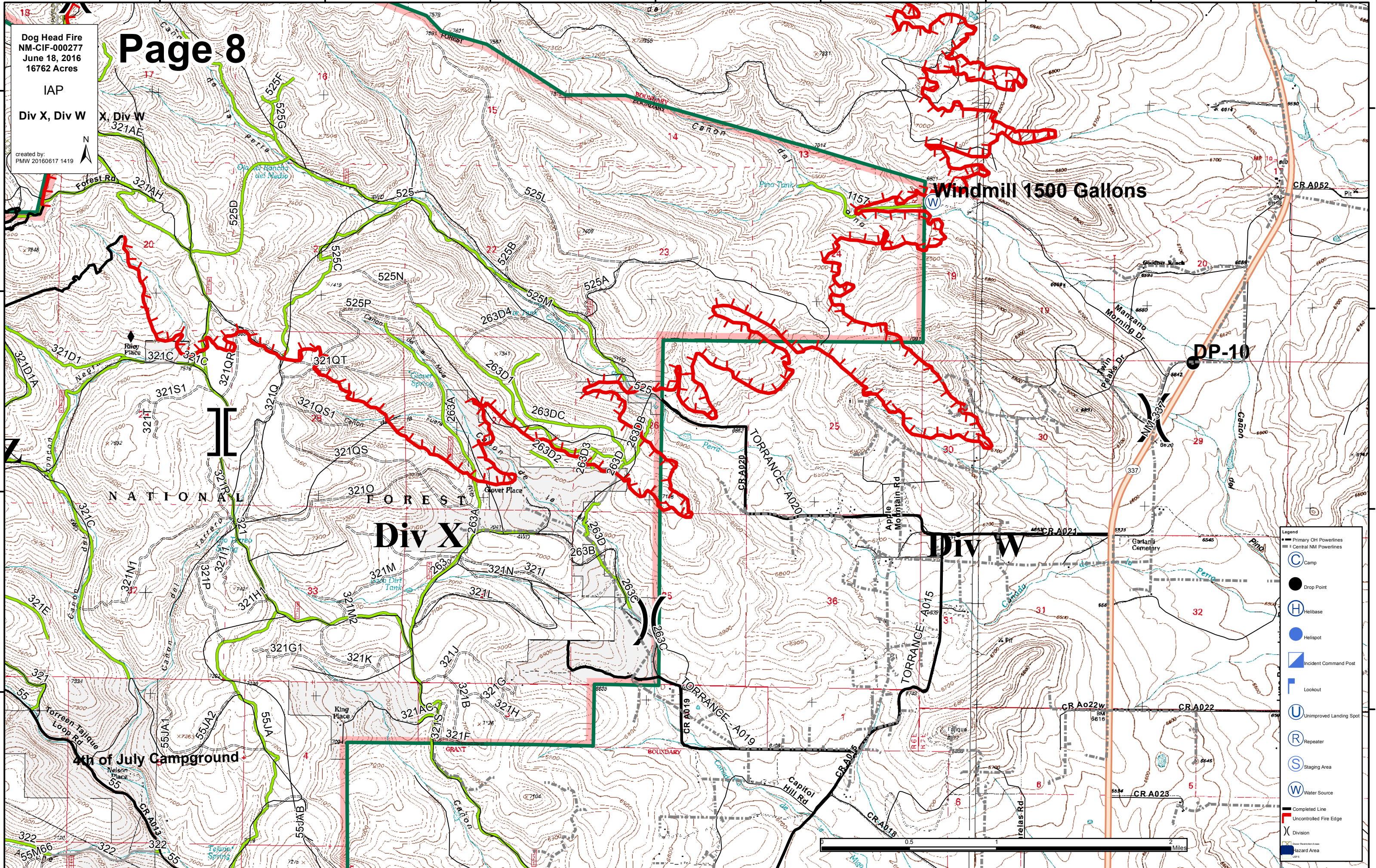


- Legend**
- Primary OH Powerlines
 - Central NM Powerlines
 - Camp
 - Drop Point
 - Helibase
 - Helispot
 - Incident Command Post
 - Lookout
 - Unimproved Landing Spot
 - Repeater
 - Staging Area
 - Water Source
 - Completed Line
 - Uncontrolled Fire Edge
 - Division
 - Lower Potential Area
 - Hazard Area



Map labels include: BERNALILLO CO, TORRANCE CO, GRANT, CHILILI, El Chinchonche Ranch, Manzano Morning Dr, Apple Mountain Rd, Windmill 1500 Gallons, DP-10, Div V, and various grid coordinates (e.g., 106°17'0"W, 34°52'0"N).

106°20'0"W 106°19'0"W 106°18'0"W 106°17'0"W 106°16'0"W 106°15'0"W 106°14'0"W 106°13'0"W



Dog Head Fire
NM-CIF-000277
June 18, 2016
16762 Acres

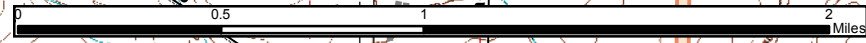
Page 8

IAP
Div X, Div W

created by:
PMW 20160617 1419



- Legend**
- Primary OH Powerlines
 - Central NM Powerlines
 - Camp
 - Drop Point
 - Helibase
 - Helispot
 - Incident Command Post
 - Lookout
 - Unimproved Landing Spot
 - Repeater
 - Staging Area
 - Water Source
 - Completed Line
 - Uncontrolled Fire Edge
 - Division
 - Lower Elevation Areas
 - Hazard Area



106°20'0"W 106°19'0"W 106°18'0"W 106°17'0"W 106°16'0"W 106°15'0"W 106°14'0"W 106°13'0"W