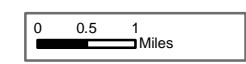


Dog Head Incident Index Map

GIS Acres 17,912
6/21/2016 08:00



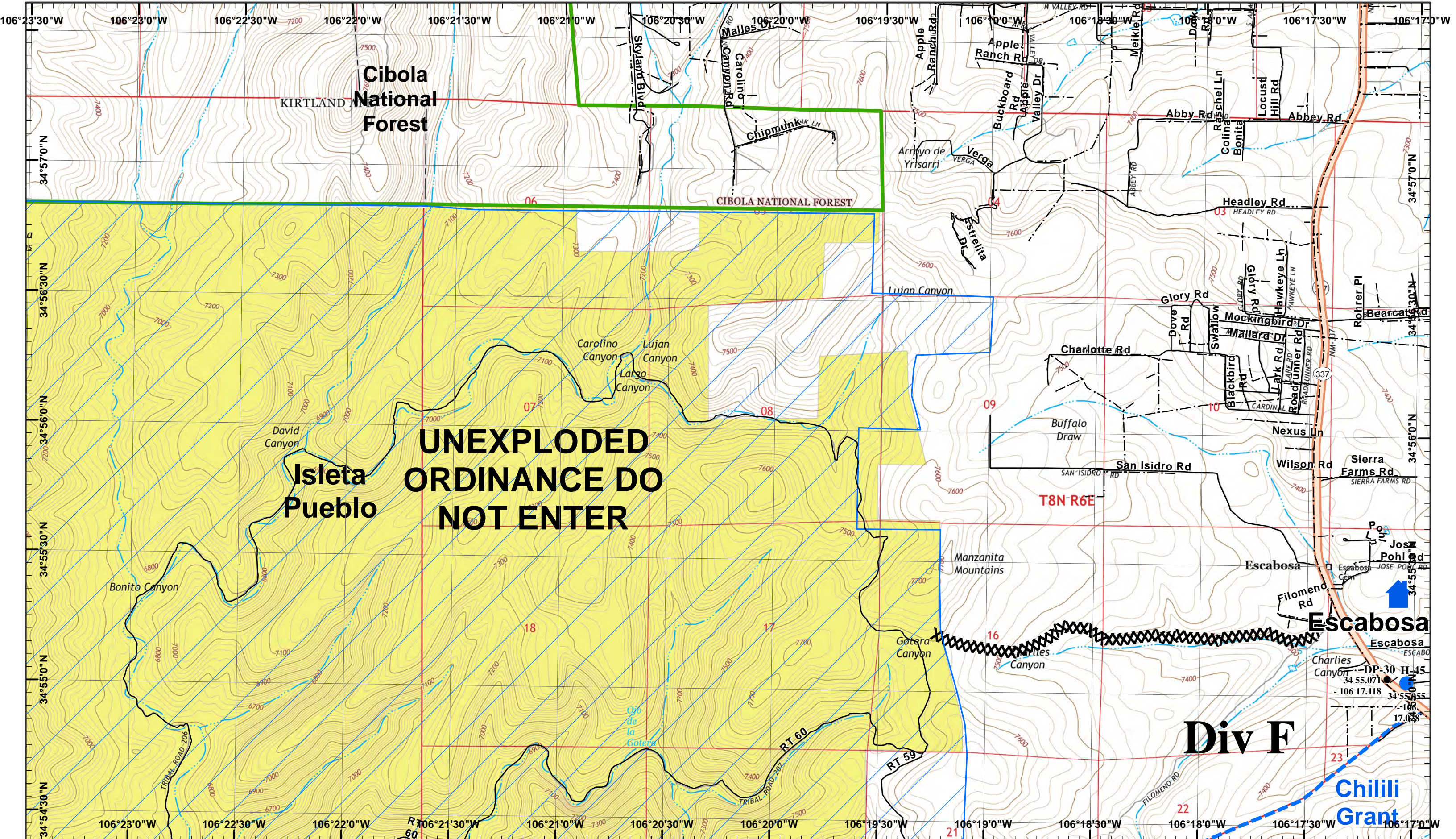
- Fire Origin
- Mobil Weather Unit
- Unimproved Landing Area
- Pipe Mile 250-Mile 273
- Unexploded Ordnance Area
- Incident Command Post
- Drop Point
- Primary OH Powerlines
- Completed Dozer Line
- Helispot
- Lookout
- Staging Area
- Secondary OH Powerlines
- Proposed Dozer Line
- Water Source
- Retardant/Mud Pit
- Safety Zone
- 10" Petroleum Pipeline
- Uncontrolled Fire Edge
- Cibola NF Grant Lands
- 6" Petroleum Pipeline
- Completed Line

Day Operational Period 6/22/2016

Map Created 6/21/2016 9:15:15 PM RDC

) Division
] Branch

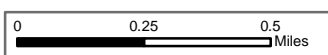




**UNEXPLODED
ORDINANCE DO
NOT ENTER**

Dog Head Incident
Day Operational Period 6/22/2016

GIS Acres 17,912
6/21/2016 08:00



Map Created 6/21/2016 8:34:22 PM RDC



XXXX Completed Dozer Line

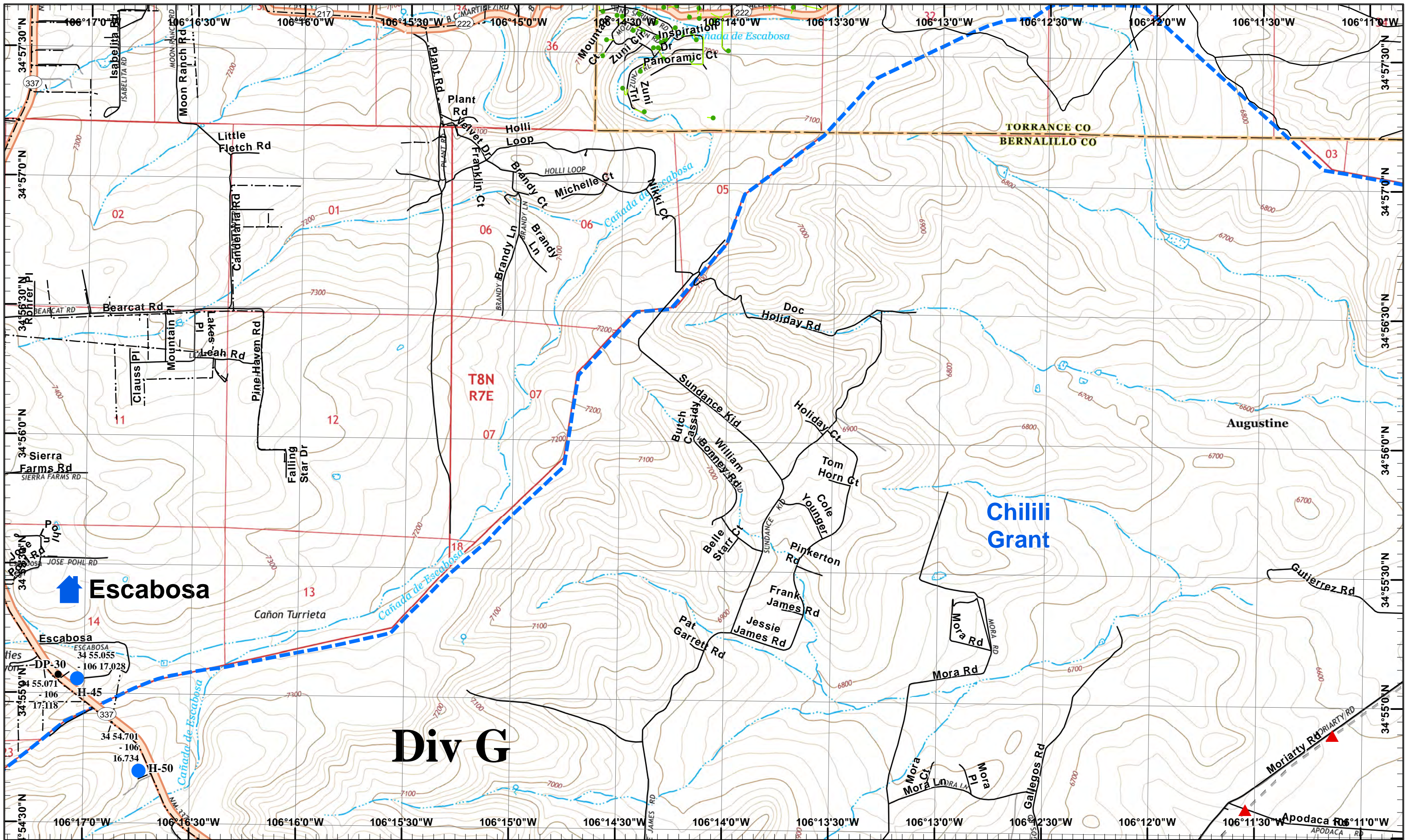
Neighboring Pages

West Page	North Page	East Page 2
	South Page 3	

1	2
3	4
5	6
7	8

Page 1
)(Division
|| Branch





Dog Head Incident
 Day Operational Period 6/22/2016

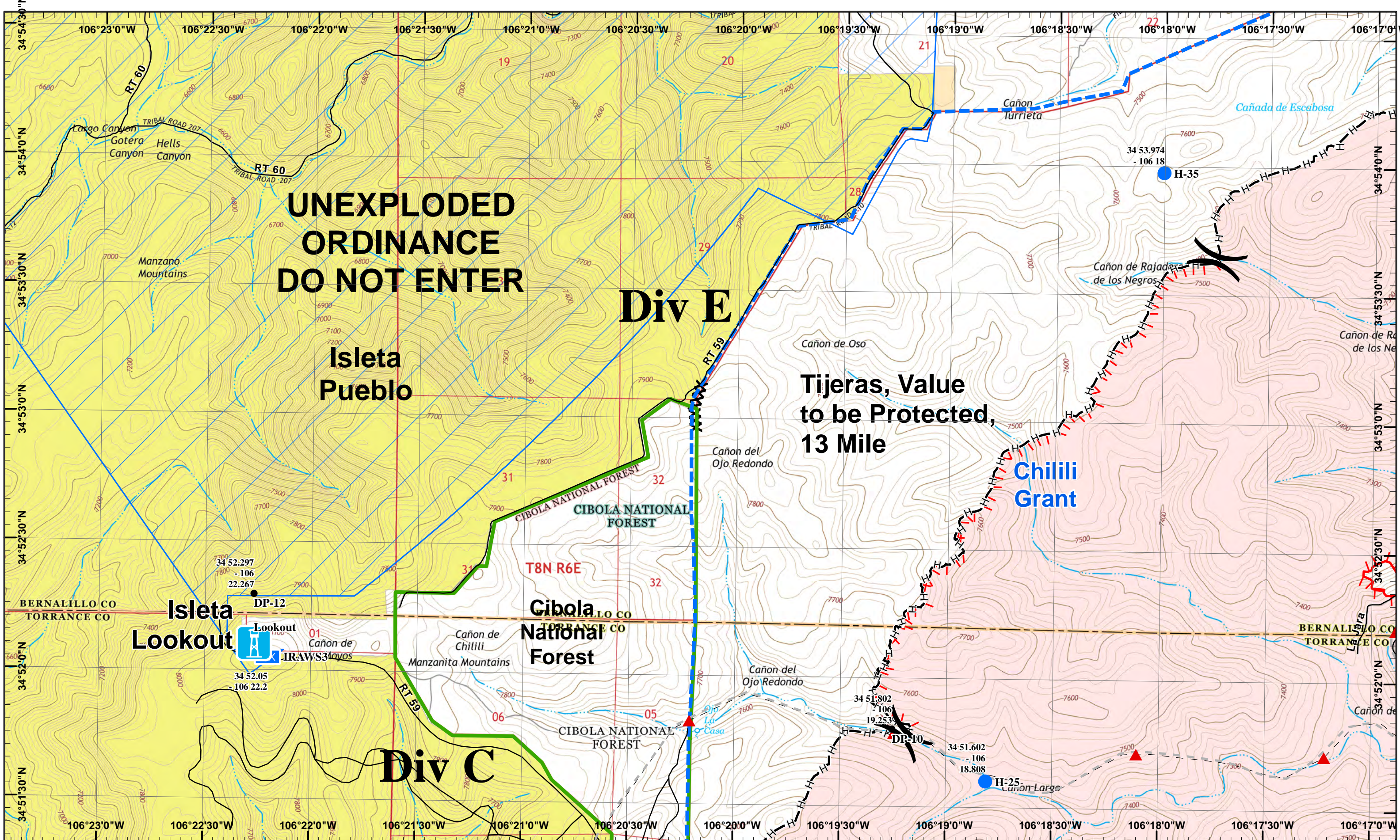
GIS Acres 17,912
 6/21/2016 08:00
 Map Created 6/21/2016 8:34:33 PM RDC



Neighboring Pages

West Page 1	North Page	East Page
	South Page 4	

Page 2
)(Division
 || Branch



**UNEXPLODED
ORDINANCE
DO NOT ENTER**

Div E

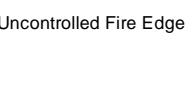
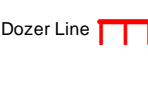
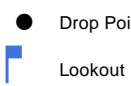
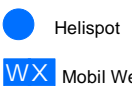
Isleta Pueblo

**Tijeras, Value
to be Protected,
13 Mile**

**Chilili
Grant**

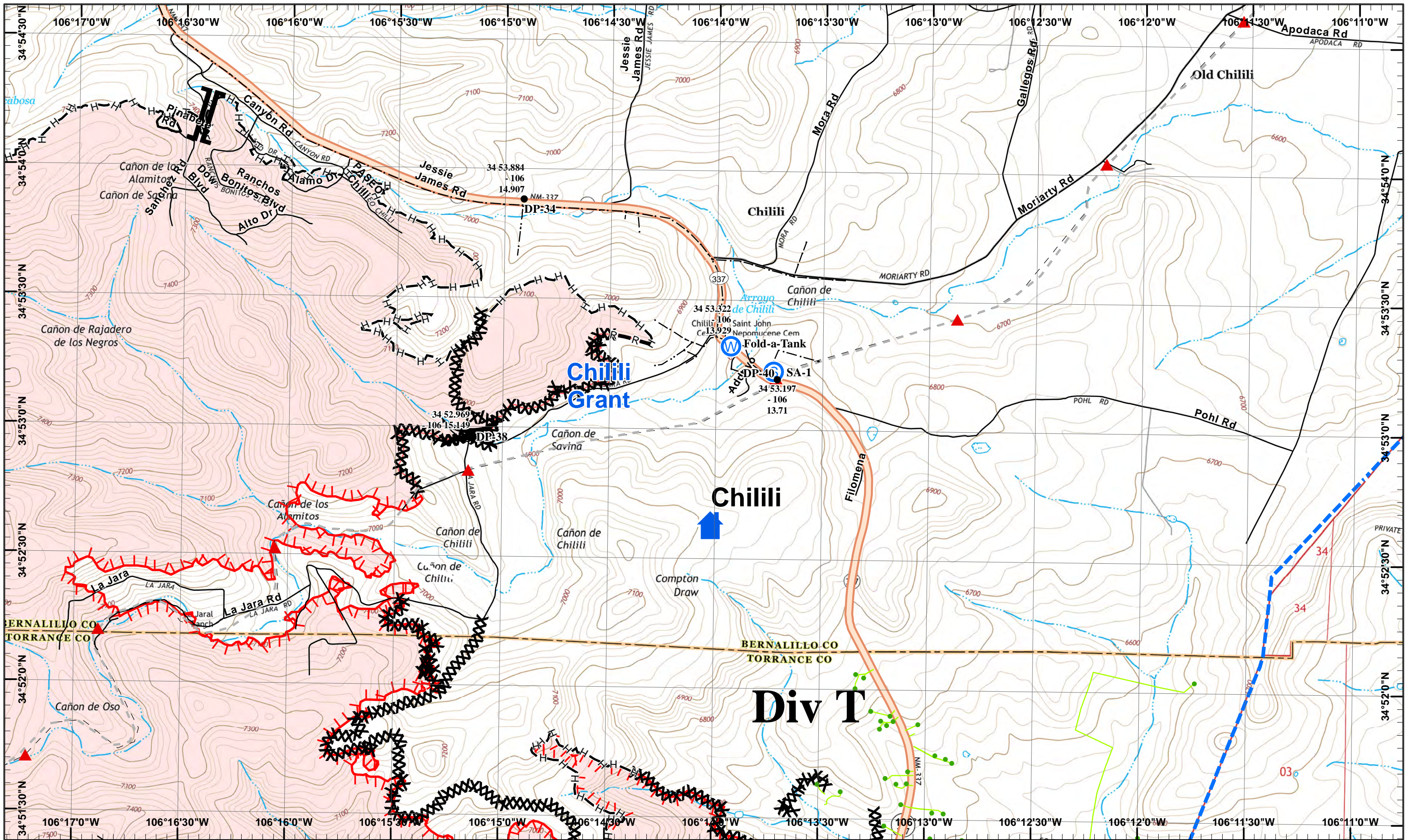
Div C

**Cibola
National
Forest**



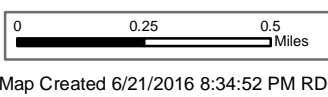
1	2
3	4
5	6
7	8





Dog Head Incident
 Day Operational Period 6/22/2016

GIS Acres 17,912
 6/21/2016 08:00



- North
- Water Source
- Staging Area
- Completed Dozer Line
- Hand Line
- Drop Point
- Road as Completed Line
- Completed Line
- Uncontrolled Fire Edge

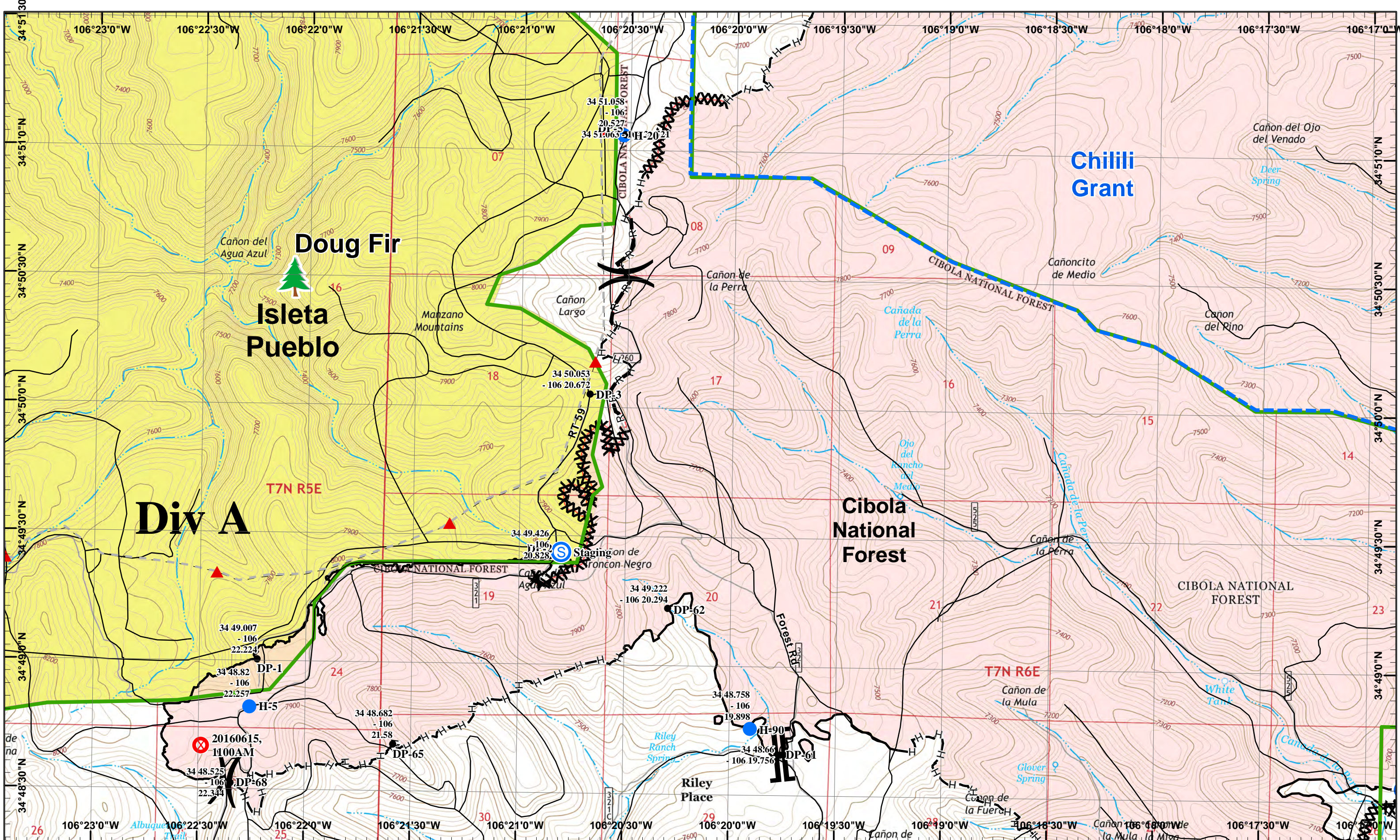
Neighboring Pages

West Page 3	North Page 2	East Page
	South Page	

1	2
3	4
5	6
7	8

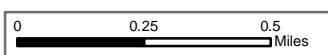
Page 4
)(Division
 || Branch





Dog Head Incident
 Day Operational Period 6/22/2016

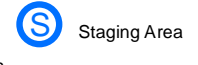
GIS Acres 17,912
 6/21/2016 08:00



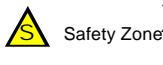
Map Created 6/21/2016 8:35:03 PM RDC



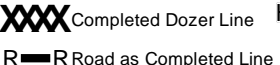
- X Fire Origin
- Helispot
- Drop Point
- U Unimproved Landing Area



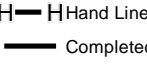
Staging Area



Safety Zone



Completed Dozer Line



Hand Line



Completed Line

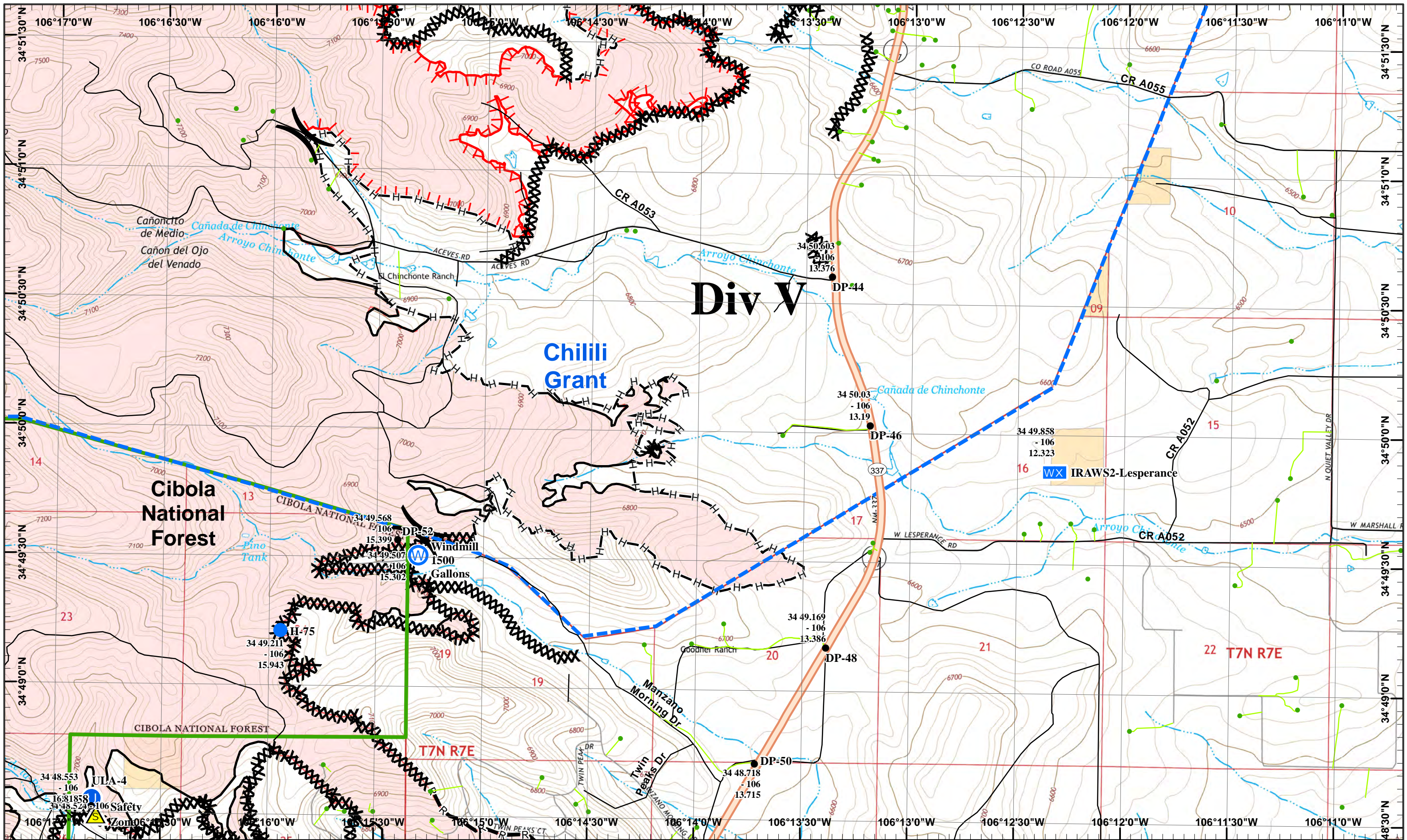
Neighboring Pages

West Page	North Page	East Page 2
	South Page 3	

1	2
3	4
5	6
7	8

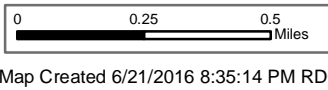
Page 5
)(Division
 || Branch





Dog Head Incident
 Day Operational Period 6/22/2016

GIS Acres 17,912
 6/21/2016 08:00



- North
- Helispot
- Water Source
- Mobil Weather Unit
- Unimproved Landing Area
- Safety Zone
- Completed Dozer Line
- Hand Line
- Drop Point
- Road as Completed Line
- Completed Line

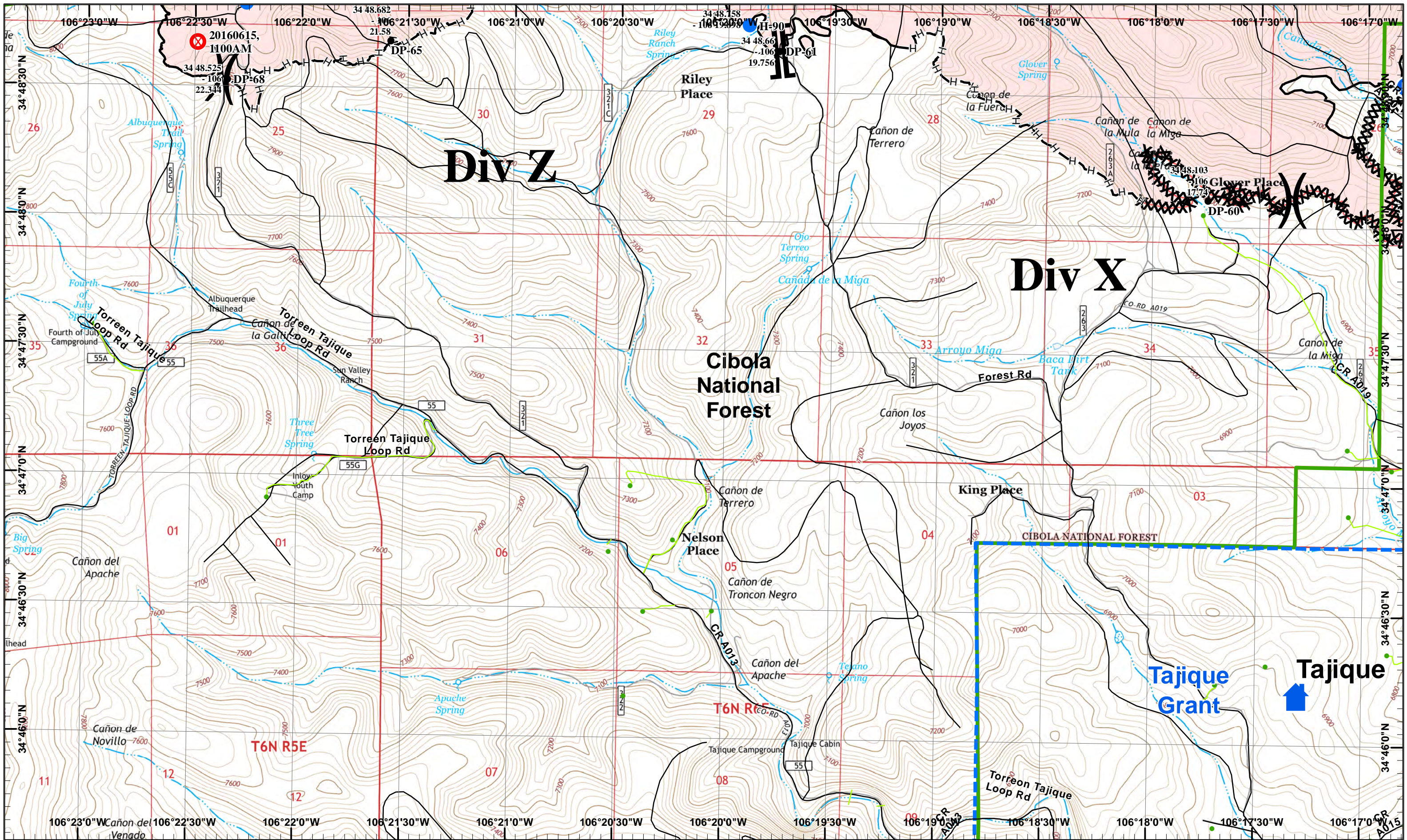
Neighboring Pages

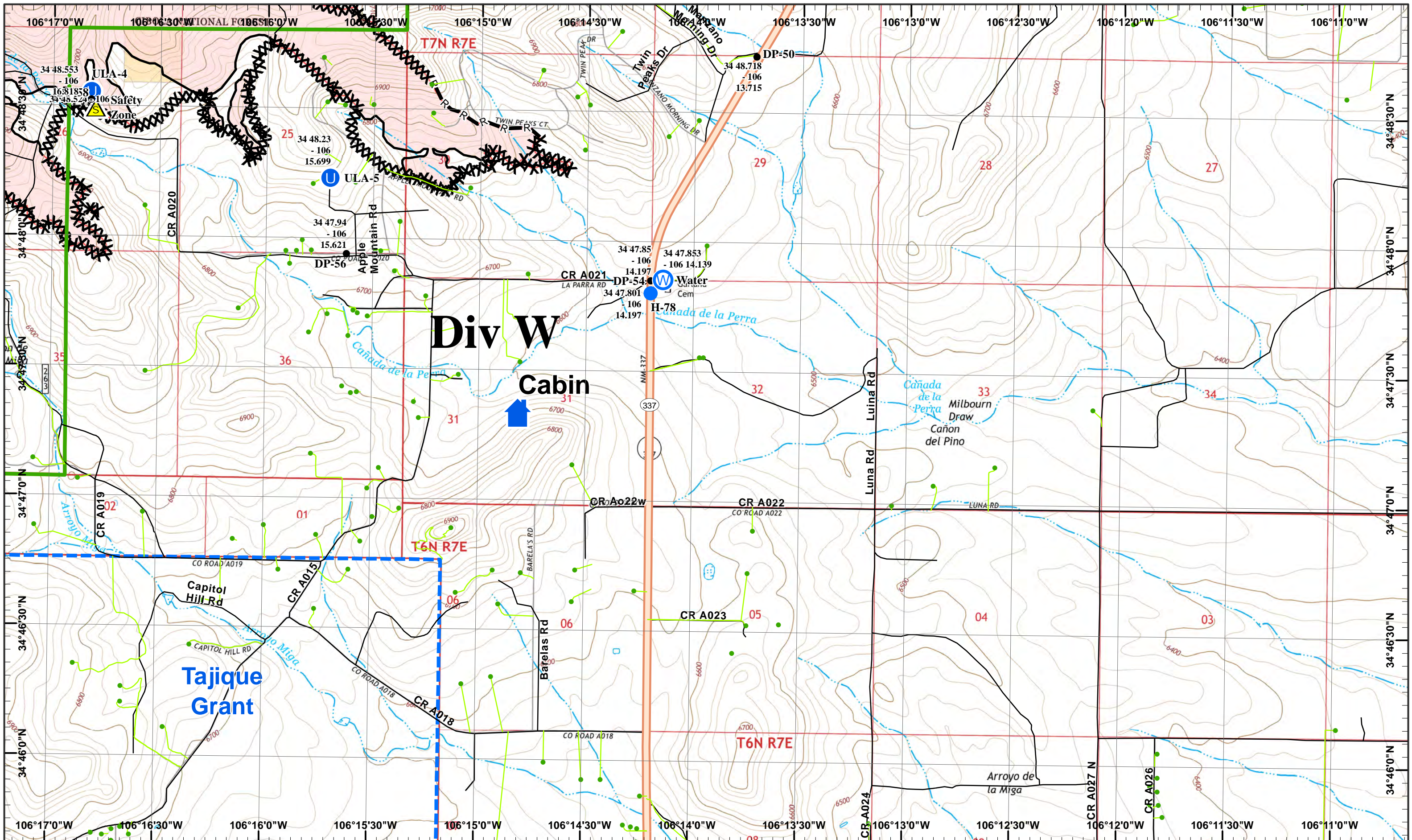
West Page	North Page	East Page 2
	South Page 3	

1	2
3	4
5	6
7	8

Page 6
)(Division
 || Branch







Dog Head Incident
 Day Operational Period 6/22/2016

GIS Acres 17,912
 6/21/2016 08:00
 Map Created 6/21/2016 8:35:34 PM RDC



- Helispot
- W Water Source
- U Unimproved Landing Area
- S Safety Zone
- Drop Point
- Completed Dozer Line
- Completed Line
- R Road as Completed Line

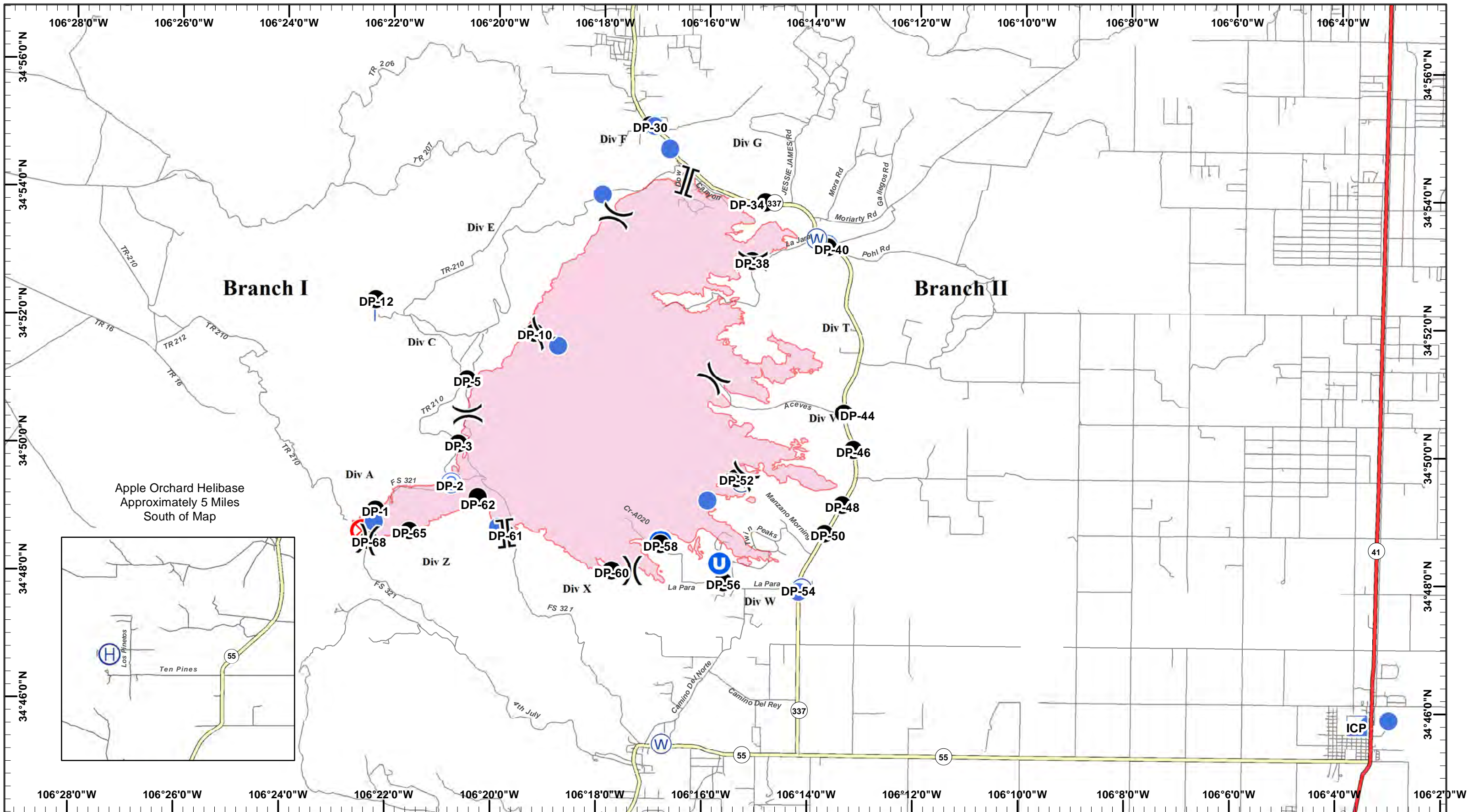
Neighboring Pages

West Page	North Page	East Page 2
	South Page 3	

1	2
3	4
5	6
7	8

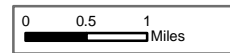
Page 8
)(Division
 || Branch





Dog Head Incident Transportation Map

GIS Acres 17,912
6/21/2016 08:00



- | | | | |
|-------------|-----------------------|-------------------------|--------------|
| Camp | Helibase | Lookout | Staging Area |
| Drop Point | Helispot | Unimproved Landing Area | Water Source |
| Fire Origin | Incident Command Post | Repeater | |

Day Operational Period 6/22/2016 Map Created 6/21/2016 9:11:02 PM RDC

