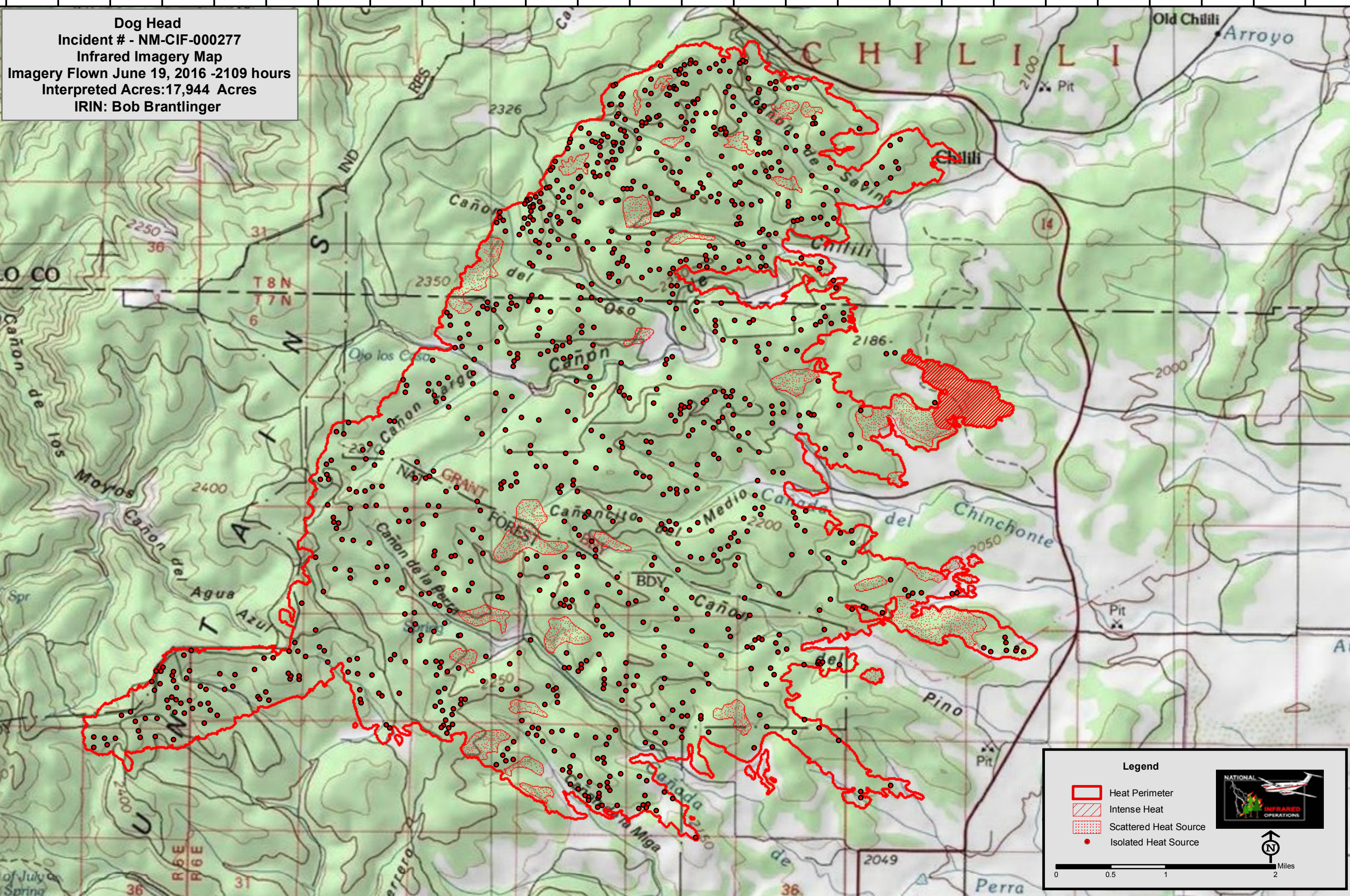


106°23'0"W 106°22'0"W 106°21'0"W 106°20'0"W 106°19'0"W 106°18'0"W 106°17'0"W 106°16'0"W 106°15'0"W 106°14'0"W 106°13'0"W 106°12'0"W 106°11'0"W

**Dog Head**  
Incident # - NM-CIF-000277  
Infrared Imagery Map  
Imagery Flown June 19, 2016 -2109 hours  
Interpreted Acres:17,944 Acres  
IRIN: Bob Brantlinger



**Legend**

- Heat Perimeter
- Intense Heat
- Scattered Heat Source
- Isolated Heat Source

NATIONAL INFRARED OPERATIONS

Miles 0 0.5 1 2

106°23'0"W 106°22'0"W 106°21'0"W 106°20'0"W 106°19'0"W 106°18'0"W 106°17'0"W 106°16'0"W 106°15'0"W 106°14'0"W 106°13'0"W 106°12'0"W 106°11'0"W