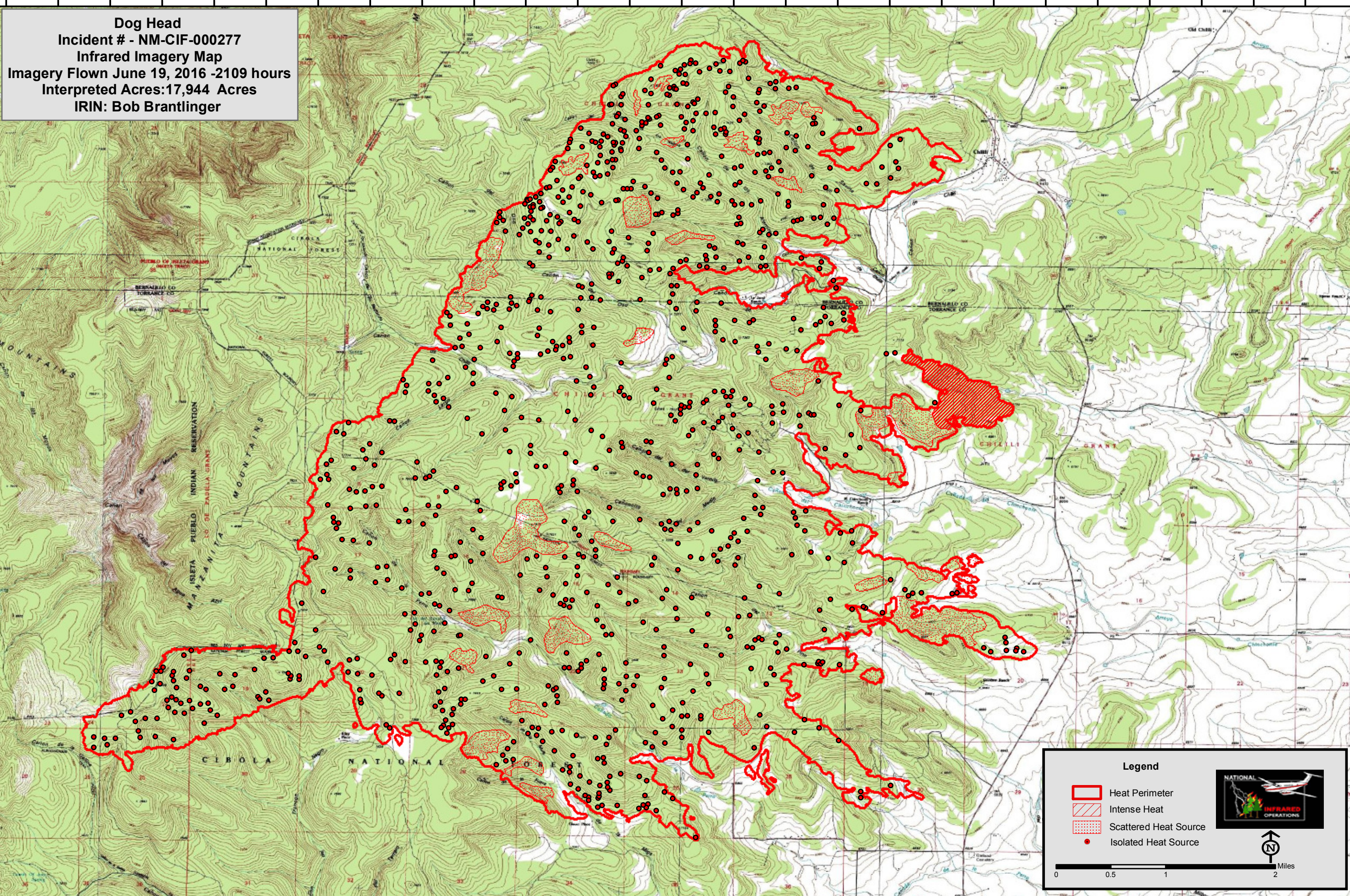


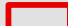



106°23'0"W 106°22'0"W 106°21'0"W 106°20'0"W 106°19'0"W 106°18'0"W 106°17'0"W 106°16'0"W 106°15'0"W 106°14'0"W 106°13'0"W 106°12'0"W 106°11'0"W

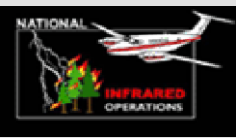

Dog Head
Incident # - NM-CIF-000277
Infrared Imagery Map
Imagery Flown June 19, 2016 -2109 hours
Interpreted Acres:17,944 Acres
IRIN: Bob Brantlinger



34°54'30"N
34°54'0"N
34°53'30"N
34°53'0"N
34°52'30"N
34°52'0"N
34°51'30"N
34°51'0"N
34°50'30"N
34°50'0"N
34°49'30"N
34°49'0"N
34°48'30"N
34°48'0"N
34°47'30"N

Legend

-  Heat Perimeter
-  Intense Heat
-  Scattered Heat Source
-  Isolated Heat Source

Miles
0 0.5 1 2

106°23'0"W 106°22'0"W 106°21'0"W 106°20'0"W 106°19'0"W 106°18'0"W 106°17'0"W 106°16'0"W 106°15'0"W 106°14'0"W 106°13'0"W 106°12'0"W 106°11'0"W