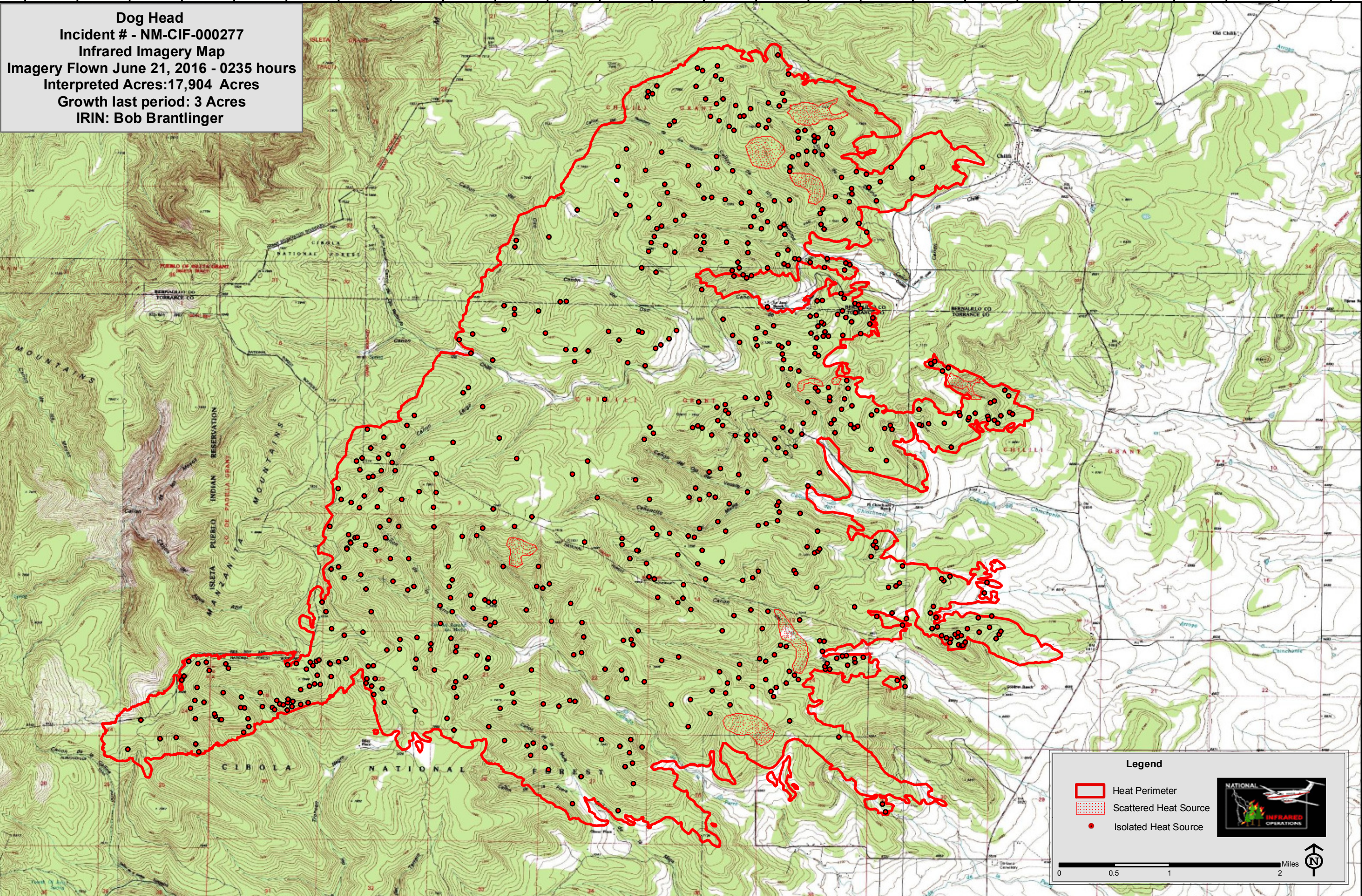


106°23'0"W 106°22'0"W 106°21'0"W 106°20'0"W 106°19'0"W 106°18'0"W 106°17'0"W 106°16'0"W 106°15'0"W 106°14'0"W 106°13'0"W 106°12'0"W 106°11'0"W

**Dog Head**  
Incident # - NM-CIF-000277  
Infrared Imagery Map  
Imagery Flown June 21, 2016 - 0235 hours  
Interpreted Acres: 17,904 Acres  
Growth last period: 3 Acres  
IRIN: Bob Brantlinger




34°54'30"N  
34°54'0"N  
34°53'30"N  
34°53'0"N  
34°52'30"N  
34°52'0"N  
34°51'30"N  
34°51'0"N  
34°50'30"N  
34°50'0"N  
34°49'30"N  
34°49'0"N  
34°48'30"N  
34°48'0"N  
34°47'30"N

106°23'0"W 106°22'0"W 106°21'0"W 106°20'0"W 106°19'0"W 106°18'0"W 106°17'0"W 106°16'0"W 106°15'0"W 106°14'0"W 106°13'0"W 106°12'0"W 106°11'0"W

**Legend**

- Heat Perimeter
- Scattered Heat Source
- Isolated Heat Source



0 0.5 1 2 Miles 