

111°00'W

110°56'W

110°52'W

33°56'N

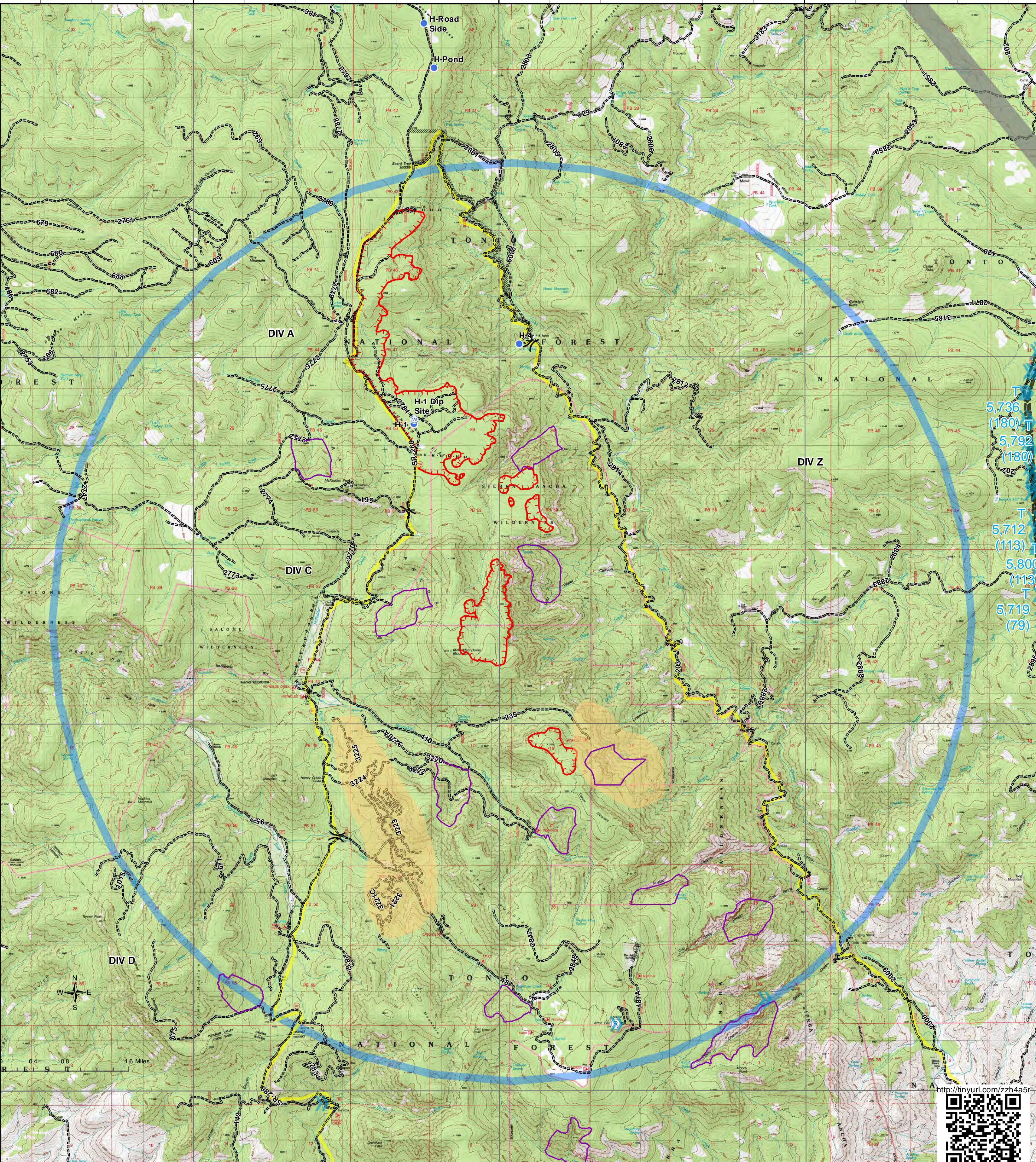
33°56'N

33°52'N

33°52'N

33°48'N

33°48'N



T  
5,736  
(180)  
T  
5,792  
(180)  
T  
5,712  
(113)  
T  
5,800  
(113)  
T  
5,719  
(79)



Label	T	DMX	DMY
May 17	Fire Origin	110° 55.851'W	33° 53.12'N
Helibase 5	Helibase	110° 56.44'W	34° 5.84'N
H-1	Helispot	110° 57.117'W	33° 55.274'N
H-3	Helispot	110° 57.858'W	33° 44.858'N
H-4	Helispot	110° 55.74'W	33° 56.15'N
H-Pond	Helispot	110° 56.85'W	33° 59.16'N
H-Road Side	Helispot	110° 56.98'W	33° 59.64'N
ICP	Incident Command Post	110° 56.634'W	34° 5.961'N
CMD 1	Repeater	110° 54.483'W	33° 48.737'N
CMD 2	Repeater	110° 50.189'W	33° 17.613'N
H-1 Dip Site	Water Source	110° 57.105'W	33° 55.323'N

**TFR**

- 5 mi radius

**Aviation Obstacle**

- 51-200 ft
- Lnd Mobile Priv TransTwr
- Military Training Route
- Power Transmission Line

**Fire**

- Helispot
- Repeater
- Water Source
- Division
- Uncontrolled Fire Edge
- Completed Dozer Line
- Hand Line
- Operational Planning Box

- Mexican Spotted Owl PAC
- Tonto NF Roads
- Mines

0 0.5 1 Miles

**Pilot Map**  
Juniper Fire  
AZ-TNF-000476  
Day Operational Period  
05/26/2016  
IR Perimeter @ 20160526 0048 hrs  
1658 Acres

Map made: 5/25/2016 10:01:34 PM KLG

111°00'W

110°56'W

110°52'W