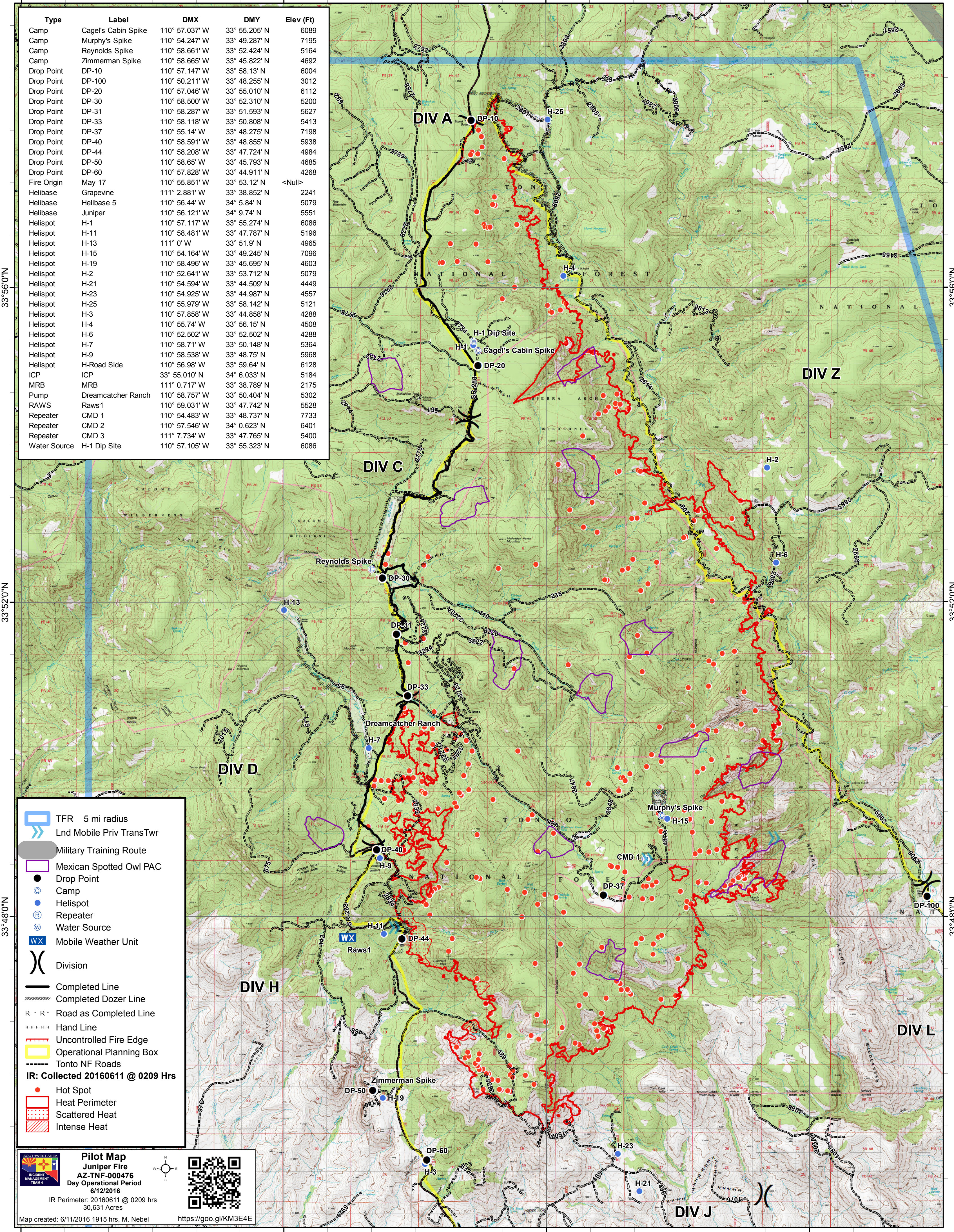



111°40'W 111°00'W 110°56'W 110°52'W



Type	Label	DMX	DMY	Elev (Ft)
Camp	Cagel's Cabin Spike	110° 57.037' W	33° 55.205' N	6089
Camp	Murphy's Spike	110° 54.247' W	33° 49.287' N	7195
Camp	Reynolds Spike	110° 58.661' W	33° 52.424' N	5164
Camp	Zimmerman Spike	110° 58.665' W	33° 45.822' N	4692
Drop Point	DP-10	110° 57.147' W	33° 58.13' N	6004
Drop Point	DP-100	110° 50.211' W	33° 48.255' N	3012
Drop Point	DP-20	110° 57.046' W	33° 55.010' N	6112
Drop Point	DP-30	110° 58.500' W	33° 52.310' N	5200
Drop Point	DP-31	110° 58.287' W	33° 51.593' N	5627
Drop Point	DP-33	110° 58.118' W	33° 50.808' N	5413
Drop Point	DP-37	110° 55.14' W	33° 48.275' N	7198
Drop Point	DP-40	110° 58.591' W	33° 48.855' N	5938
Drop Point	DP-44	110° 58.208' W	33° 47.724' N	4984
Drop Point	DP-50	110° 58.65' W	33° 45.793' N	4685
Drop Point	DP-60	110° 57.828' W	33° 44.911' N	4268
Fire Origin	May 17	110° 55.851' W	33° 53.12' N	<Null>
Helibase	Grapevine	111° 2.881' W	33° 38.852' N	2241
Helibase	Helibase 5	110° 56.44' W	34° 5.84' N	5079
Helibase	Juniper	110° 56.121' W	34° 9.74' N	5551
Helispot	H-1	110° 57.117' W	33° 55.274' N	6086
Helispot	H-11	110° 58.481' W	33° 47.787' N	5196
Helispot	H-13	111° 0' W	33° 51.9' N	4965
Helispot	H-15	110° 54.164' W	33° 49.245' N	7096
Helispot	H-19	110° 58.496' W	33° 45.695' N	4603
Helispot	H-2	110° 52.641' W	33° 53.712' N	5079
Helispot	H-21	110° 54.594' W	33° 44.509' N	4449
Helispot	H-23	110° 54.925' W	33° 44.987' N	4557
Helispot	H-25	110° 55.979' W	33° 58.142' N	5121
Helispot	H-3	110° 57.858' W	33° 44.858' N	4288
Helispot	H-4	110° 55.74' W	33° 56.15' N	4508
Helispot	H-6	110° 52.502' W	33° 52.502' N	4288
Helispot	H-7	110° 58.71' W	33° 50.148' N	5364
Helispot	H-9	110° 58.538' W	33° 48.75' N	5968
Helispot	H-Road Side	110° 56.98' W	33° 59.64' N	6128
ICP	ICP	33° 55.010' N	34° 6.033' N	5184
MRB	MRB	111° 0.717' W	33° 38.789' N	2175
Pump	Dreamcatcher Ranch	110° 58.757' W	33° 50.404' N	5302
RAWS	Raws1	110° 59.031' W	33° 47.742' N	5528
Repeater	CMD 1	110° 54.483' W	33° 48.737' N	7733
Repeater	CMD 2	110° 57.546' W	34° 0.623' N	6401
Repeater	CMD 3	111° 7.734' W	33° 47.765' N	5400
Water Source	H-1 Dip Site	110° 57.105' W	33° 55.323' N	6086

- TFR 5 mi radius
- Lnd Mobile Priv TransTwr
- Military Training Route
- Mexican Spotted Owl PAC
- Drop Point
- Camp
- Helispot
- Repeater
- Water Source
- Mobile Weather Unit
- Division
- Completed Line
- Completed Dozer Line
- Road as Completed Line
- Hand Line
- Uncontrolled Fire Edge
- Operational Planning Box
- Tonto NF Roads
- IR: Collected 20160611 @ 0209 Hrs**
- Hot Spot
- Heat Perimeter
- Scattered Heat
- Intense Heat

Pilot Map
Juniper Fire
AZ-TNF-000476
 Day Operational Period
 6/12/2016
 IR Perimeter: 20160611 @ 0209 hrs
 30,631 Acres



Map created: 6/11/2016 1915 hrs, M. Nebel
<https://goo.gl/KM3E4E>

111°40'W 111°00'W 110°56'W 110°52'W