



- Division
 - Mobile Weather Unit
 - Drop Point
 - Camp
 - Repeater
 - Helibase
 - Helispot
 - Incident Command Post
 - Water Source
 - Completed Dozer Line
 - R - R - Road as Completed Line
 - Completed Line
 - H - H - H - Hand Line
 - Planned Secondary Line
 - Uncontrolled Fire Edge
 - Historical Wildfires
 - Mile Markers
 - Hwy 288
 - Known Mine Areas**
 - Asbestos
 - SuperFund
 - Uranium
 - Uranium Cap
- Map created: 6/15/2016 1818 hrs KLG

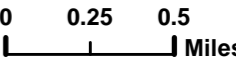
JUNIPER FIRE
IAP
 Day Operational Period
 6/16/2016
 AZ-TNF-000476
 30,631 Acres
 IR Perimeter collected: 20160611 @ 0209 hrs

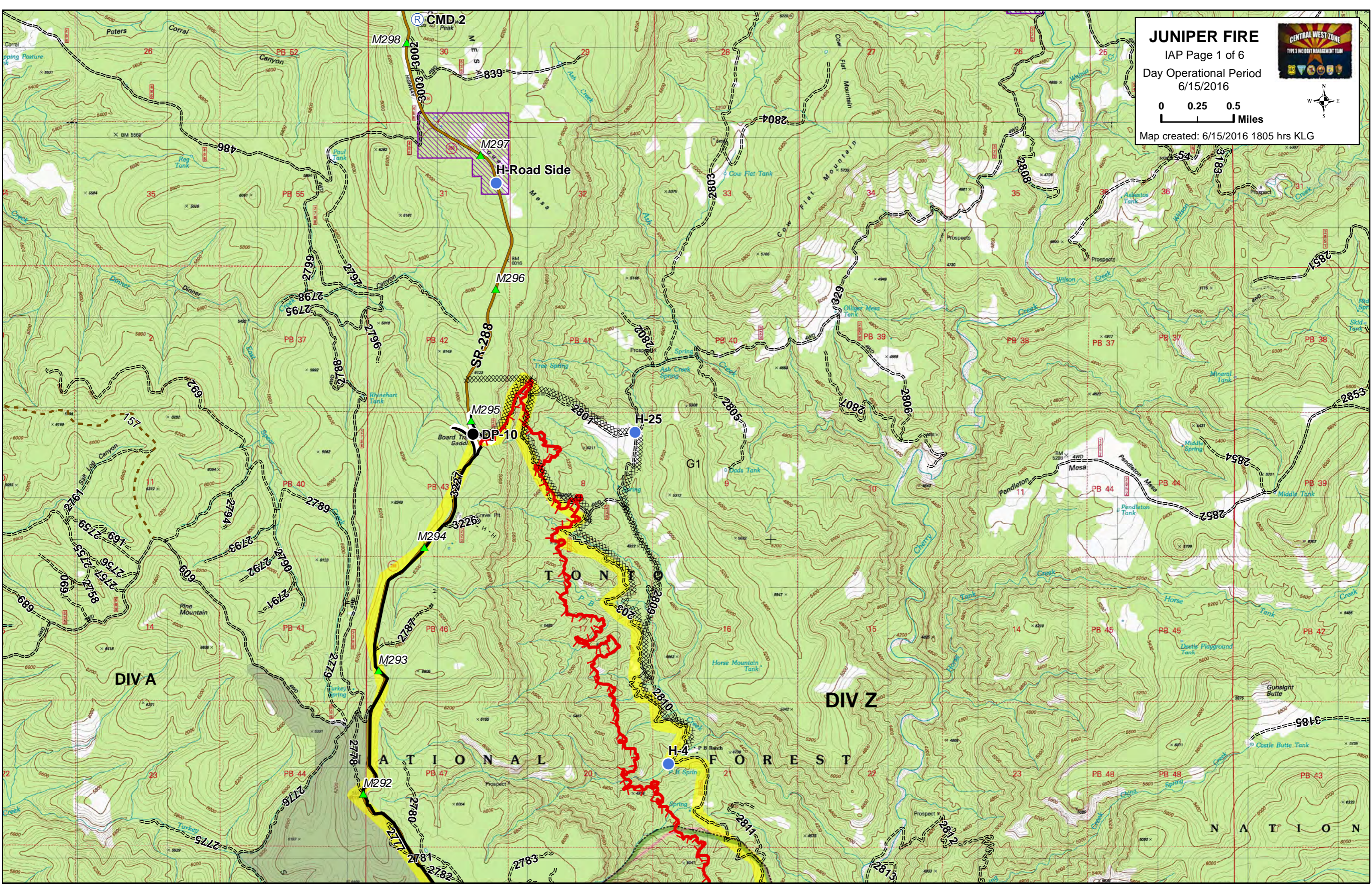

JUNIPER FIRE



IAP Page 1 of 6
Day Operational Period
6/15/2016





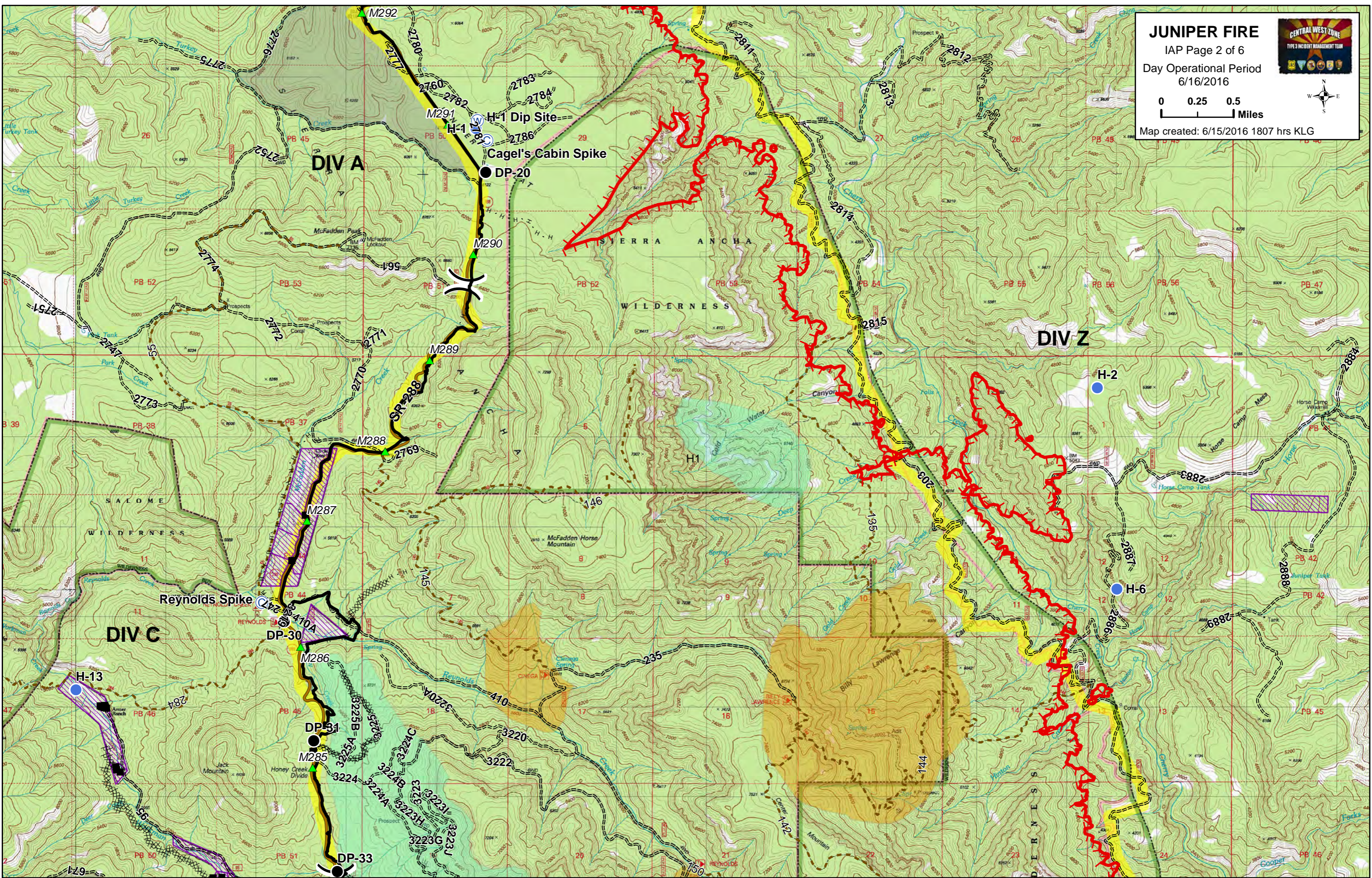
Map created: 6/15/2016 1805 hrs KLG

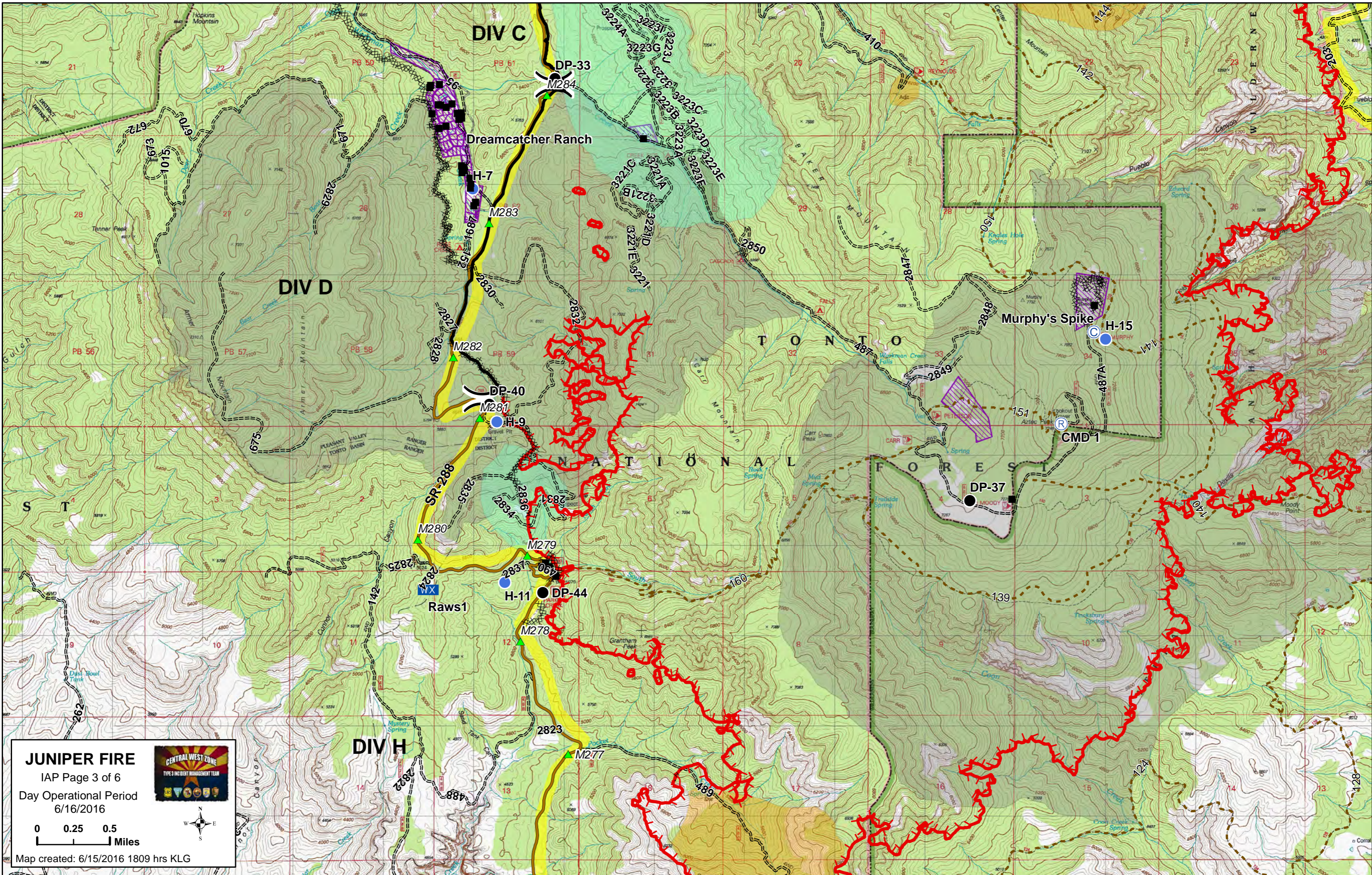


JUNIPER FIRE
 IAP Page 2 of 6
 Day Operational Period
 6/16/2016


0 0.25 0.5 Miles

Map created: 6/15/2016 1807 hrs KLG








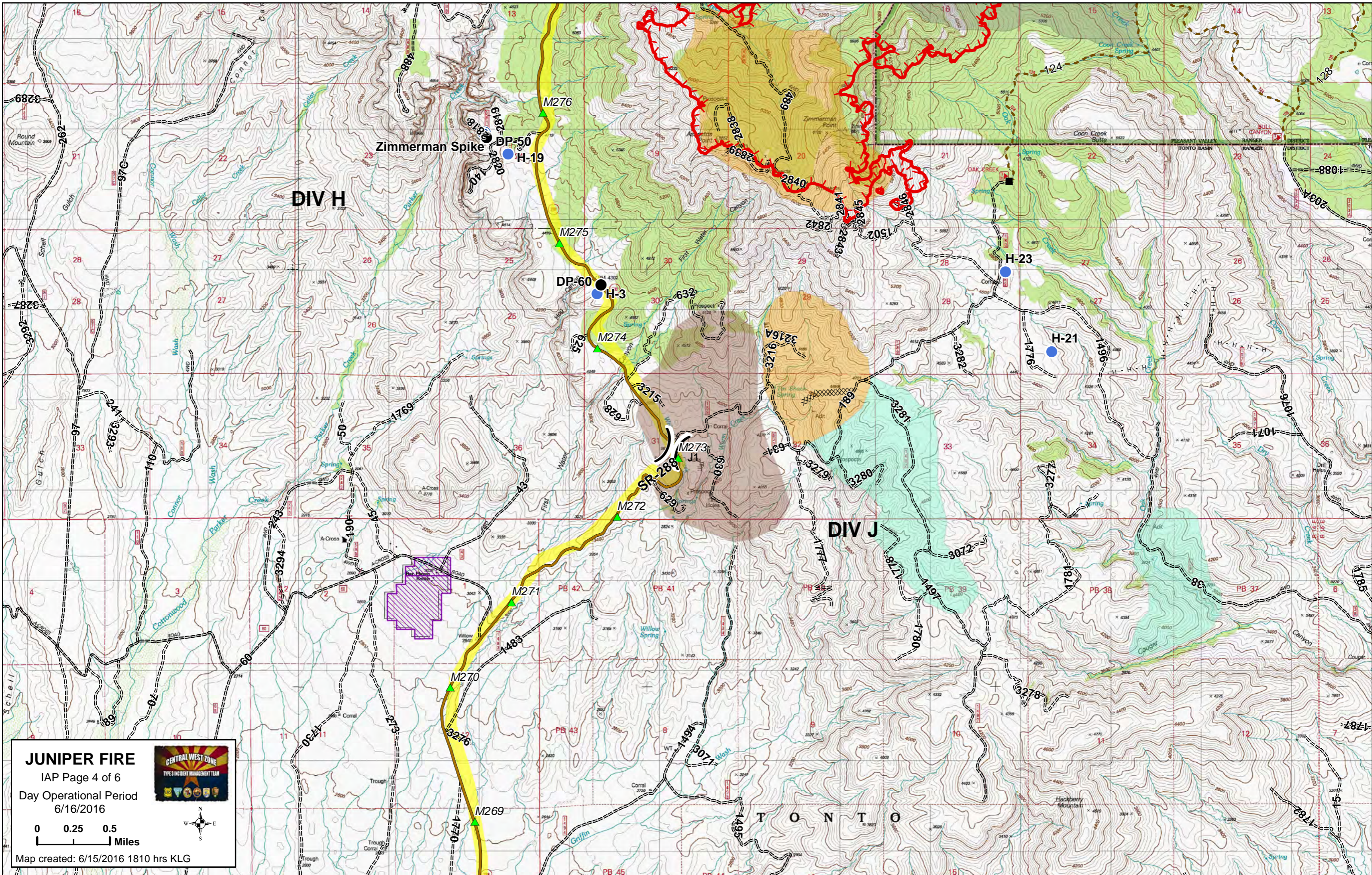
JUNIPER FIRE
IAP Page 3 of 6
Day Operational Period
6/16/2016



0 0.25 0.5
Miles



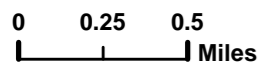
Map created: 6/15/2016 1809 hrs KLG



JUNIPER FIRE

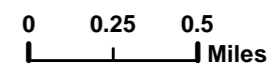
IAP Page 4 of 6

Day Operational Period
6/16/2016



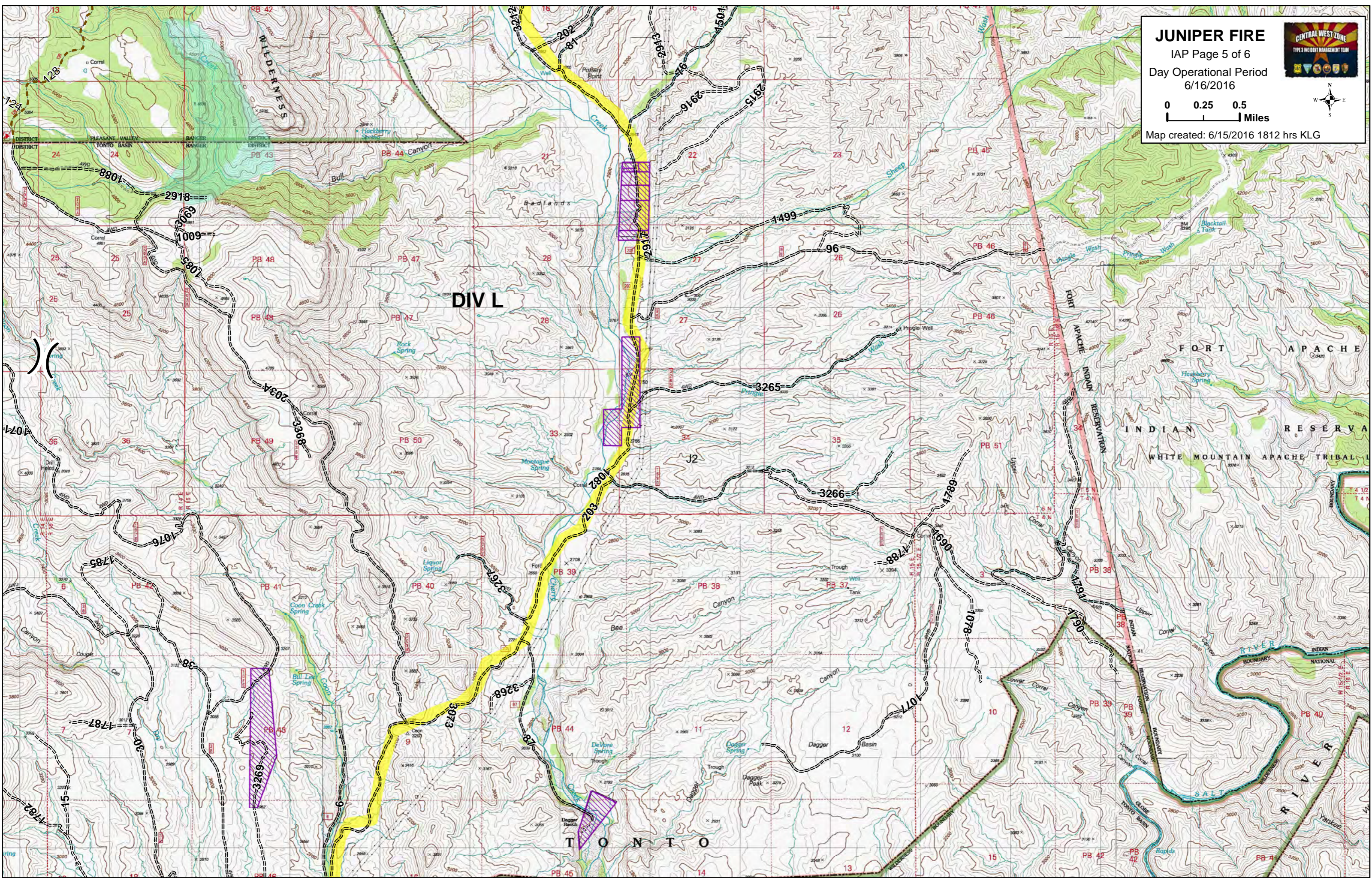


Map created: 6/15/2016 1810 hrs KLG

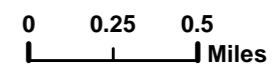
JUNIPER FIRE
 IAP Page 5 of 6
 Day Operational Period
 6/16/2016



Map created: 6/15/2016 1812 hrs KLG

JUNIPER FIRE
 IAP Page 6 of 6
 Day Operational Period
 6/16/2016



Map created: 6/15/2016 1813 hrs KLG

