

Planning Map

Mormon Fire

AZ-COF-331

28-May-2016



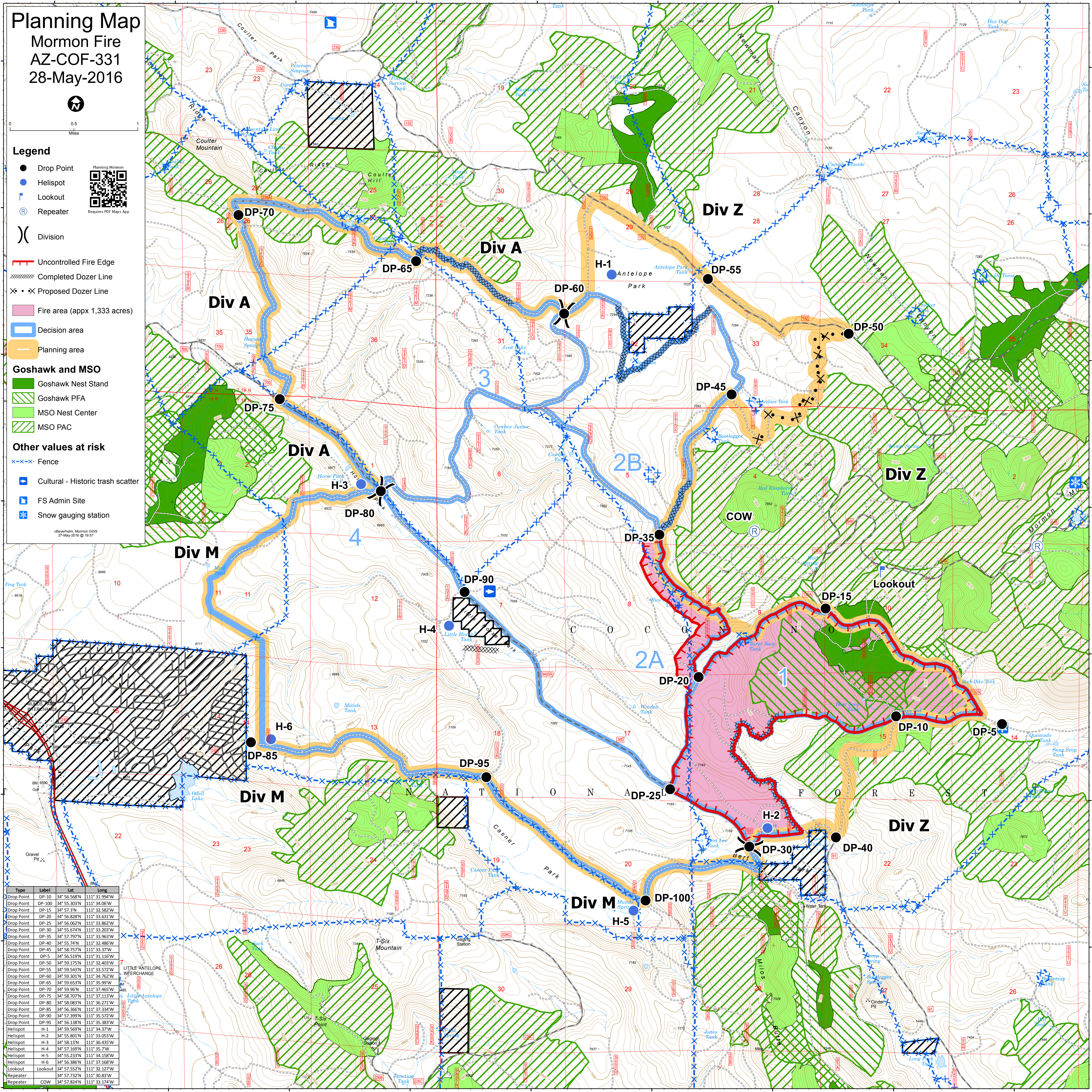
0 0.5 1
Miles

Legend

- Drop Point
- Helispot
- ⌘ Lookout
- Ⓜ Repeater
-) Division
- Uncontrolled Fire Edge
- ⊘ Completed Dozer Line
- ⊗ Proposed Dozer Line
- Fire area (appx 1,333 acres)
- Decision area
- Planning area
- Goshawk and MSO**
- Goshawk Nest Stand
- ▨ Goshawk PFA
- MSO Nest Center
- ▨ MSO PAC
- Other values at risk**
- ⊗ Fence
- Ⓜ Cultural - Historic trash scatter
- Ⓜ FS Admin Site
- Ⓜ Snow gauging station



©Beyerholm, Mormon GIS
27-May-2016 @ 15:57



| Type | Label | Lat | Long |
|------------|---------|--------------|---------------|
| Drop Point | DP-10 | 34° 56.568'N | 111° 31.994'W |
| Drop Point | DP-100 | 34° 55.303'N | 111° 34.05'W |
| Drop Point | DP-15 | 34° 57.21'N | 111° 32.582'W |
| Drop Point | DP-20 | 34° 56.828'N | 111° 33.631'W |
| Drop Point | DP-25 | 34° 56.062'N | 111° 33.862'W |
| Drop Point | DP-30 | 34° 55.674'N | 111° 33.203'W |
| Drop Point | DP-35 | 34° 57.797'N | 111° 33.963'W |
| Drop Point | DP-40 | 34° 55.74'N | 111° 32.486'W |
| Drop Point | DP-45 | 34° 58.757'N | 111° 33.37'W |
| Drop Point | DP-5 | 34° 56.519'N | 111° 31.116'W |
| Drop Point | DP-50 | 34° 59.175'N | 111° 32.403'W |
| Drop Point | DP-55 | 34° 59.543'N | 111° 33.572'W |
| Drop Point | DP-60 | 34° 59.301'N | 111° 34.762'W |
| Drop Point | DP-65 | 34° 59.653'N | 111° 35.29'W |
| Drop Point | DP-70 | 34° 59.96'N | 111° 37.465'W |
| Drop Point | DP-75 | 34° 58.707'N | 111° 37.113'W |
| Drop Point | DP-80 | 34° 58.083'N | 111° 36.271'W |
| Drop Point | DP-85 | 34° 56.366'N | 111° 37.334'W |
| Drop Point | DP-90 | 34° 57.399'N | 111° 35.572'W |
| Drop Point | DP-95 | 34° 56.138'N | 111° 35.383'W |
| Drop Point | DP-95 | 34° 59.569'N | 111° 31.347'W |
| Helispot | H-1 | 34° 55.801'N | 111° 33.053'W |
| Helispot | H-2 | 34° 58.13'N | 111° 36.435'W |
| Helispot | H-3 | 34° 57.169'N | 111° 35.71'W |
| Helispot | H-4 | 34° 55.233'N | 111° 34.158'W |
| Helispot | H-6 | 34° 56.386'N | 111° 37.168'W |
| Lookout | Lookout | 34° 57.552'N | 111° 32.127'W |
| Repeater | COW | 34° 57.732'N | 111° 30.833'W |
| Repeater | COW | 34° 57.824'N | 111° 33.174'W |