

# Planning Map

## Mormon Fire

### AZ-COF-331

#### 3-June-2016



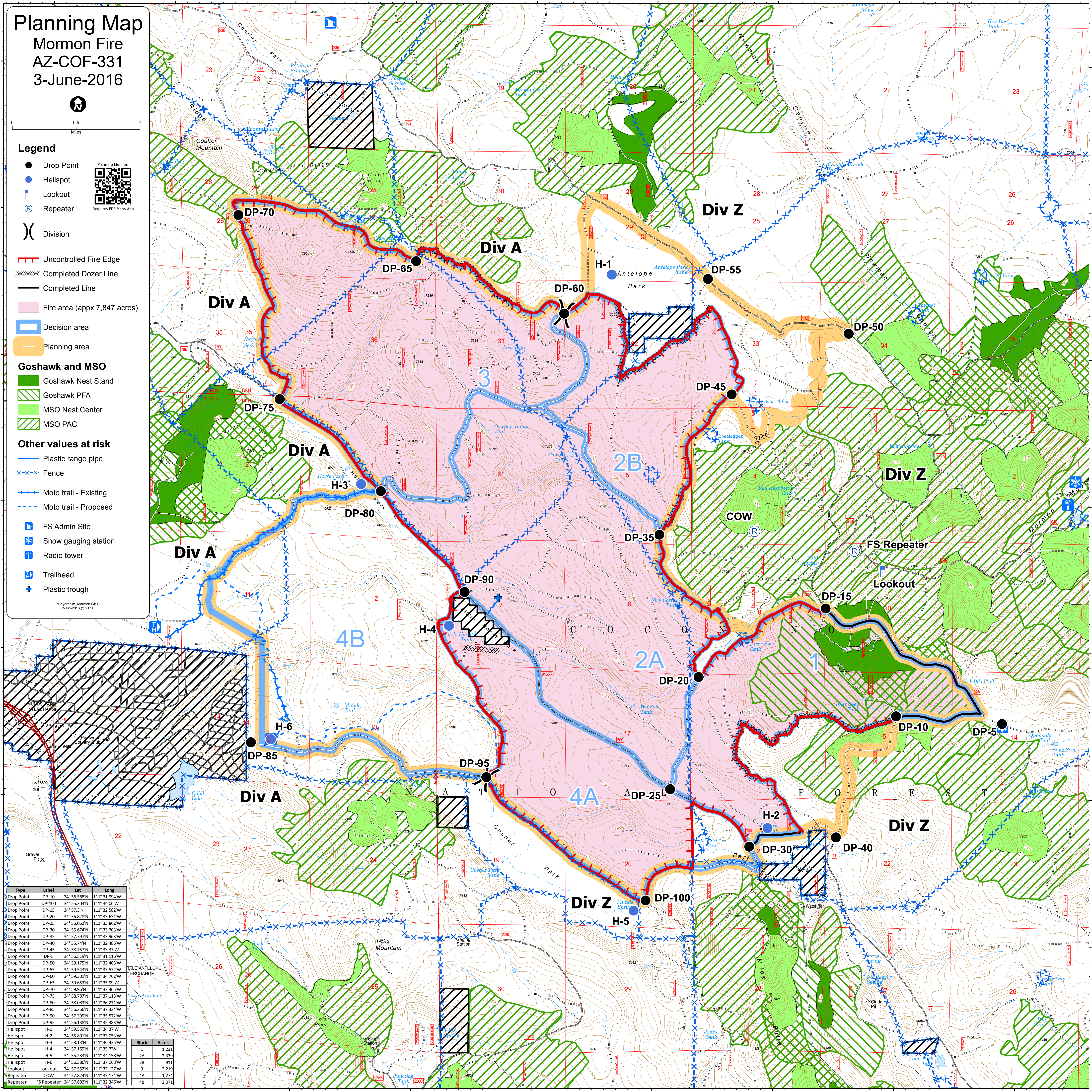
0 0.5 1  
Miles

### Legend

- Drop Point
- Helispot
- ⊕ Lookout
- Ⓡ Repeater
- ⎵ Division
- Uncontrolled Fire Edge
- ⊘ Completed Dozer Line
- Completed Line
- Fire area (appx 7,847 acres)
- Decision area
- ▭ Planning area
- Goshawk and MSO**
- Goshawk Nest Stand
- ▨ Goshawk PFA
- MSO Nest Center
- ▨ MSO PAC
- Other values at risk**
- Plastic range pipe
- ⊕ Fence
- ⊕ Moto trail - Existing
- ⊕ Moto trail - Proposed
- Ⓡ FS Admin Site
- ⊕ Snow gauging station
- Ⓡ Radio tower
- Ⓡ Trailhead
- ⊕ Plastic trough



Requires PDF Maps App



Type	Label	Lat	Long
Drop Point	DP-10	34° 56.568'N	111° 31.994'W
Drop Point	DP-100	34° 55.303'N	111° 34.05'W
Drop Point	DP-15	34° 57.2'N	111° 32.582'W
Drop Point	DP-20	34° 56.828'N	111° 33.631'W
Drop Point	DP-25	34° 56.062'N	111° 33.862'W
Drop Point	DP-30	34° 55.674'N	111° 33.203'W
Drop Point	DP-35	34° 57.797'N	111° 33.963'W
Drop Point	DP-40	34° 55.74'N	111° 32.486'W
Drop Point	DP-45	34° 58.757'N	111° 33.37'W
Drop Point	DP-5	34° 56.519'N	111° 31.116'W
Drop Point	DP-50	34° 59.175'N	111° 32.403'W
Drop Point	DP-55	34° 59.543'N	111° 33.572'W
Drop Point	DP-60	34° 59.301'N	111° 34.762'W
Drop Point	DP-65	34° 59.653'N	111° 35.59'W
Drop Point	DP-70	34° 59.96'N	111° 37.465'W
Drop Point	DP-75	34° 58.707'N	111° 37.113'W
Drop Point	DP-80	34° 58.083'N	111° 36.271'W
Drop Point	DP-85	34° 56.366'N	111° 37.334'W
Drop Point	DP-90	34° 57.399'N	111° 35.572'W
Drop Point	DP-95	34° 56.138'N	111° 35.383'W
Drop Point	DP-95	34° 59.569'N	111° 34.37'W
Helispot	H-1	34° 59.569'N	111° 34.37'W
Helispot	H-2	34° 58.801'N	111° 33.053'W
Helispot	H-3	34° 58.13'N	111° 36.435'W
Helispot	H-4	34° 57.169'N	111° 35.7'W
Helispot	H-5	34° 55.233'N	111° 34.158'W
Helispot	H-6	34° 56.385'N	111° 37.168'W
Lookout	Lookout	34° 57.552'N	111° 32.127'W
Repeater	COW	34° 57.824'N	111° 33.174'W
Repeater	FS Repeater	34° 57.692'N	111° 32.346'W

Block	Acres
1	1,221
2A	2,329
2B	911
3	2,219
4A	1,274
4B	2,071

©Bayerhalm, Mormon GIS  
2-Jun-2016 @ 21:20