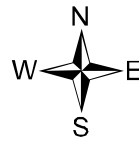


North Fire NM-CIF-000232 Transportation Map

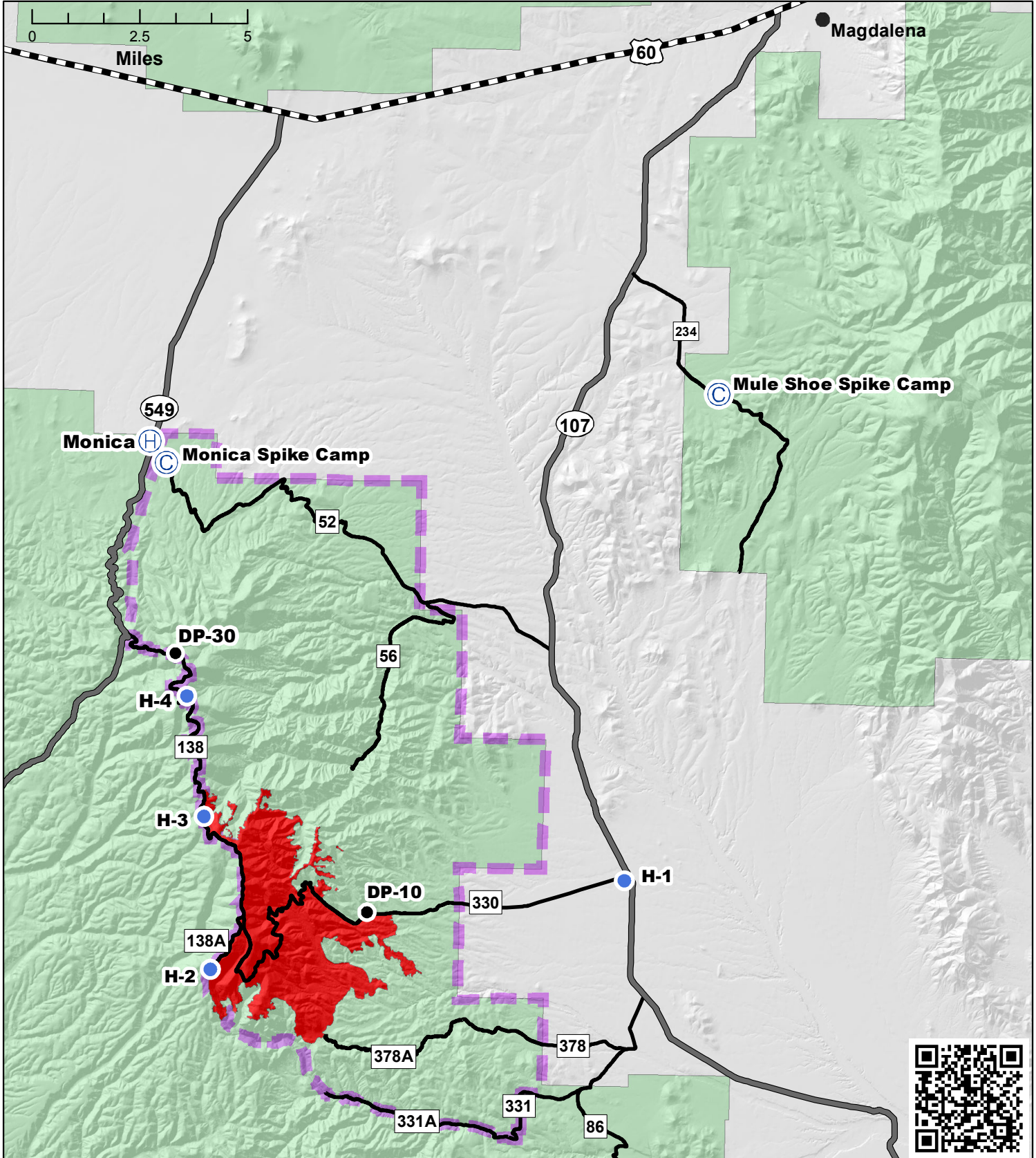
Date: 6/4/2016



Name	Type	Latitude	Longitude
DP-10	Drop Point	33° 48.427' N	107° 24.589' W
DP-30	Drop Point	33° 53.571' N	107° 29.381' W
Monica	Helibase	33° 57.841' N	107° 30.115' W
H-1	Helispot	33° 49.197' N	107° 18.379' W
H-2	Helispot	33° 47.212' N	107° 28.342' W
H-3	Helispot	33° 50.295' N	107° 28.593' W
H-4	Helispot	33° 52.713' N	107° 29.076' W
Monica	Spike Camp	33° 57.422' N	107° 29.705' W
Mule Shoe	Spike Camp	33° 59.052' N	107° 16.355' W

- North Fire
- READ Boundary
- Cibola NF
- FS Road
- State Road
- Highway

NAD 83
UTM13N



DIRECTIONS

Spike camp contact is Aaron Ernsberger cell# 602-501-9977. Please don't hesitate to call for directions, needs or request

MONICA CABIN SPIKE CAMP

1. Take U.S. 60 West from Magdalena for approximately 13 miles. Turn South onto 549 road.

2. Take 549 road south for 10 miles. Turn East on F.S. 52 road (F.S. 52 road is 4.6 miles south of the Rail Road Tracks).

3. Take F.S. 52 road for ½ mile. Monica Spike will be to your left directly North of the abandoned Monica Cabin in the Oak stand.

Estimated travel time from Magdalena is approximately 35-40 minutes @ 24 miles of distance.