

North Fire
NM-CIF-00232
 19,806 acres per IR flight
 flown 6/11/2016 03:56 hrs

OPS - Div B
6/11/2016
 07:00 Hrs


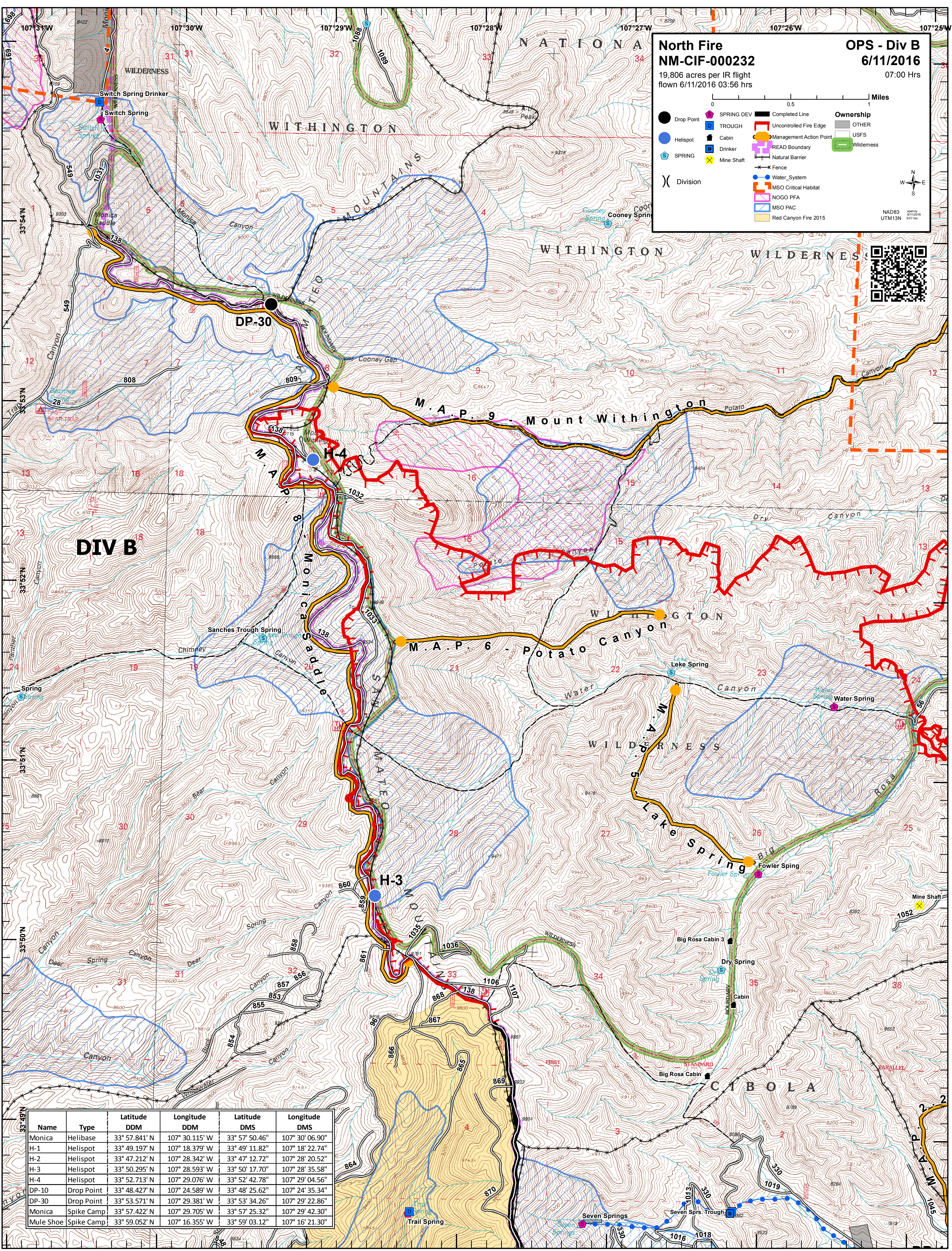
0 0.5 1 Miles

Ownership
 OTHER
 USFS
 Wilderness

Legend:
 Drop Point (Black circle)
 Helispot (Blue circle)
 SPRING (Blue circle with 'S')
 SPRING DEV (Pink square with 'S')
 TROUGH (Blue square with 'D')
 Cabin (Black square)
 Drinker (Blue square with 'D')
 Mine Shaft (Yellow 'X')
 Completed Line (Black line)
 Uncontrolled Fire Edge (Red line)
 Management Action Point (Yellow circle)
 READ Boundary (Pink line)
 Natural Barrier (Black line with 'X')
 Fence (Black line with 'X')
 Water_System (Blue line)
 MSO Critical Habitat (Blue hatched area)
 NOGO PFA (Pink hatched area)
 MSO PAC (Blue hatched area)
 Red Canyon Fire 2015 (Yellow hatched area)

Division (Black line with 'D')
 North (N)
 South (S)
 East (E)
 West (W)

NAD83
 UTM13N
 Spring 810.0m
 907 hrs

Name	Type	Latitude DDM	Longitude DDM	Latitude DMS	Longitude DMS
Monica	Helibase	33° 57.841' N	107° 30.115' W	33° 57' 50.46" N	107° 30' 06.90" W
H-1	Helispot	33° 49.197' N	107° 18.379' W	33° 49' 11.82" N	107° 18' 22.74" W
H-2	Helispot	33° 47.212' N	107° 28.342' W	33° 47' 12.72" N	107° 28' 20.52" W
H-3	Helispot	33° 50.295' N	107° 28.593' W	33° 50' 17.70" N	107° 28' 35.58" W
H-4	Helispot	33° 52.713' N	107° 29.076' W	33° 52' 42.78" N	107° 29' 04.56" W
DP-10	Drop Point	33° 48.427' N	107° 24.589' W	33° 48' 25.62" N	107° 24' 35.34" W
DP-30	Drop Point	33° 53.571' N	107° 29.381' W	33° 53' 34.26" N	107° 29' 22.86" W
Monica	Spike Camp	33° 57.422' N	107° 29.705' W	33° 57' 25.32" N	107° 29' 42.30" W
Mule Shoe	Spike Camp	33° 59.052' N	107° 16.355' W	33° 59' 03.12" N	107° 16' 21.30" W