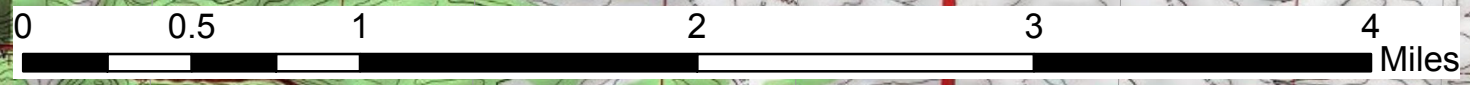


107°30'0"W 107°29'0"W 107°28'0"W 107°27'0"W 107°26'0"W 107°25'0"W 107°24'0"W 107°23'0"W 107°22'0"W 107°21'0"W



NATIONAL INFRARED OPERATIONS

● Isolated Heat

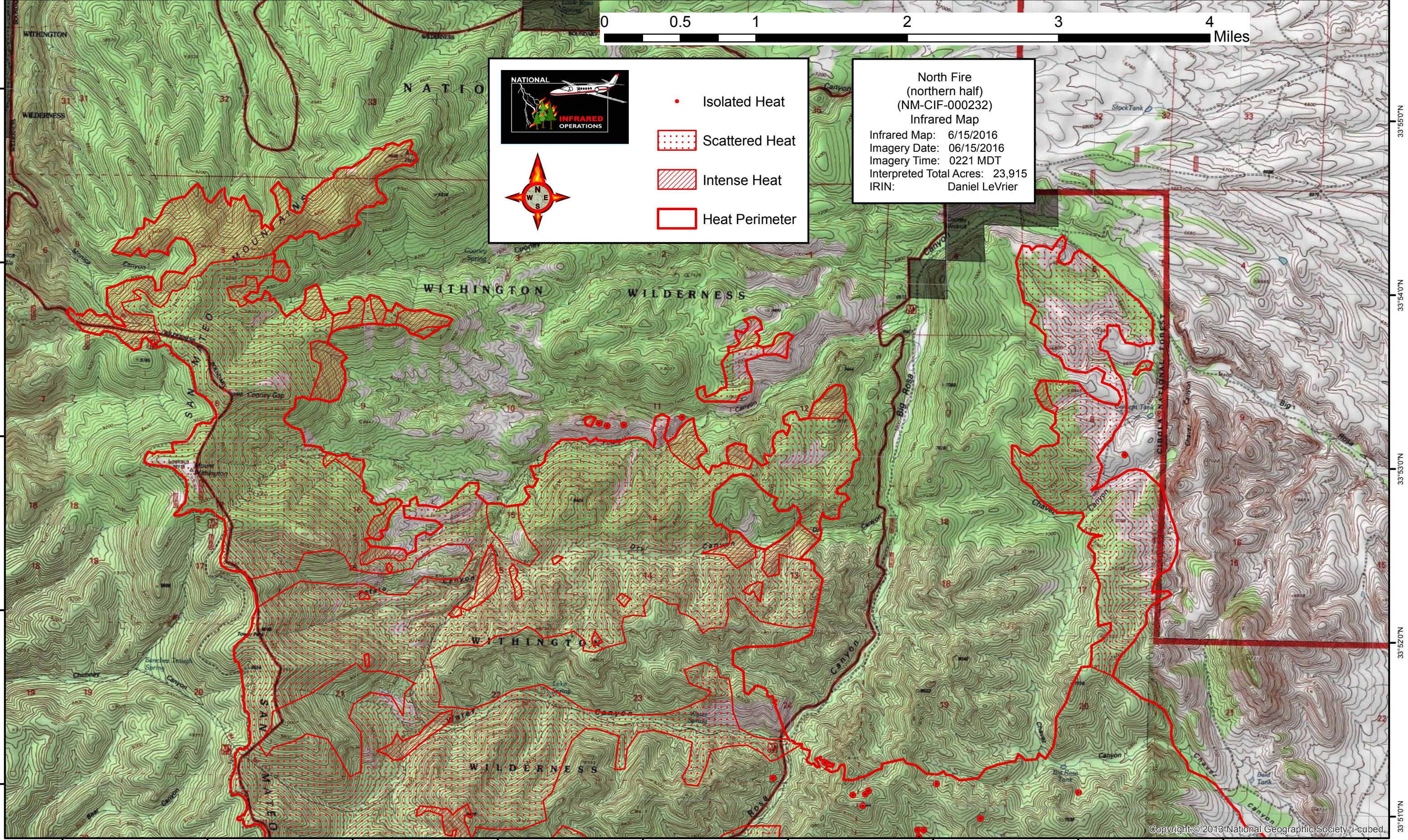
▤ Scattered Heat

▨ Intense Heat

□ Heat Perimeter

North Fire (northern half)
 (NM-CIF-000232)
 Infrared Map

Infrared Map: 6/15/2016
 Imagery Date: 06/15/2016
 Imagery Time: 0221 MDT
 Interpreted Total Acres: 23,915
 IRIN: Daniel LeVrier



107°30'0"W 107°29'0"W 107°28'0"W 107°27'0"W 107°26'0"W 107°25'0"W 107°24'0"W 107°23'0"W 107°22'0"W 107°21'0"W

33°55'0"N
33°54'0"N
33°53'0"N
33°52'0"N
33°51'0"N

33°55'0"N
33°54'0"N
33°53'0"N
33°52'0"N
33°51'0"N