

Air Ops Map Boundary Fire AZ-COF-565 17-June-2017

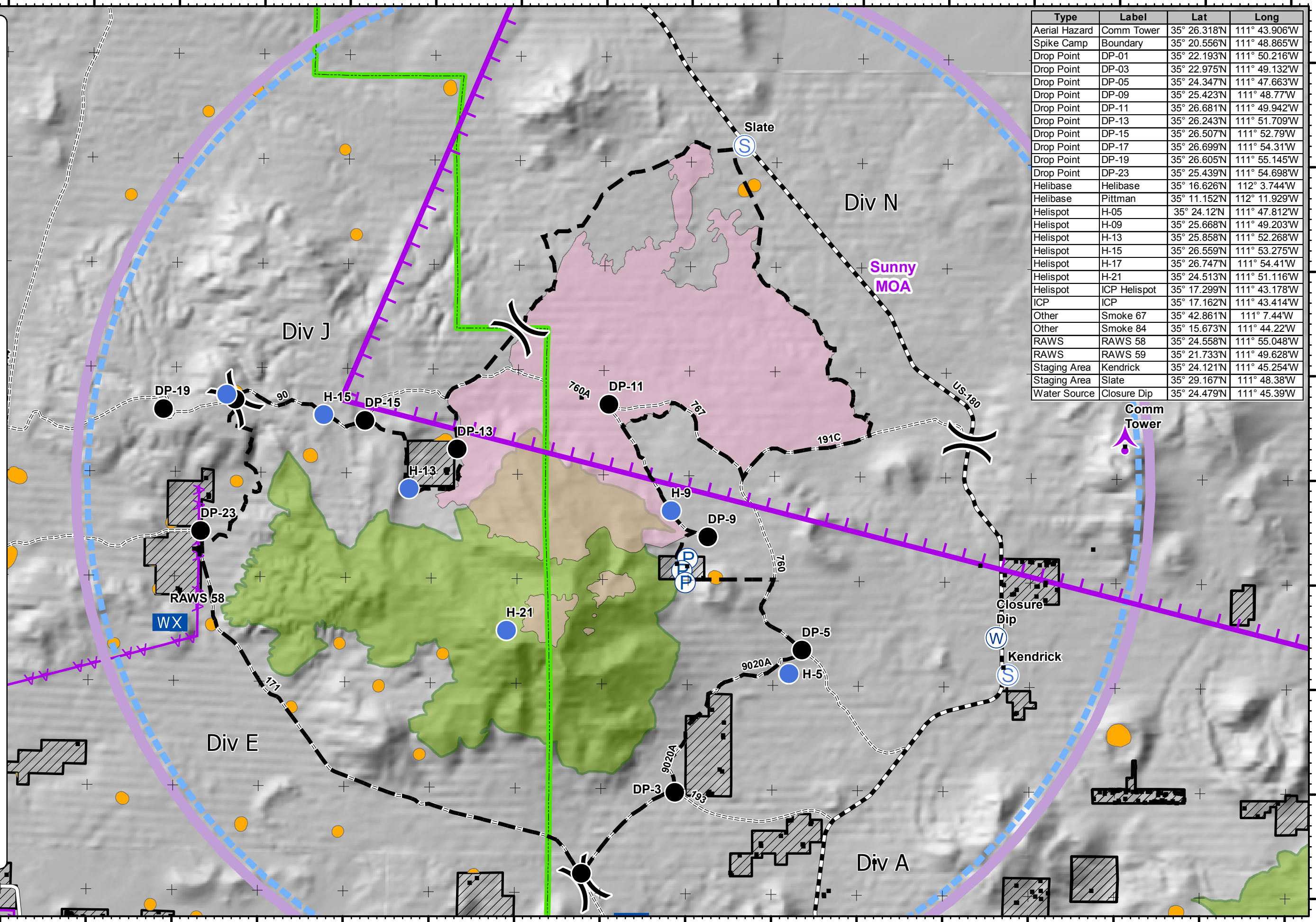


Miles

- Structures
- Aerial Hazard
- Drop Point
- Helispot
- Mobile Weather Unit
- Pump
- Staging Area
- Water Source
- Division
- Planned Fire Line
- Powerlines
- Sunny_MOA
- TFR
- Road
- Unmaintained
- Maintained
- Paved
- Retardant avoidance
- Non-FS Lands
- Fire area
- Kendrick Wilderness

cBeyerhelm, Boundary GIS
16-Jun-2017 @ 21:43

| Type | Label | Lat | Long |
|---------------|--------------|--------------|---------------|
| Aerial Hazard | Comm Tower | 35° 26.318'N | 111° 43.906'W |
| Spike Camp | Boundary | 35° 20.556'N | 111° 48.865'W |
| Drop Point | DP-01 | 35° 22.193'N | 111° 50.216'W |
| Drop Point | DP-03 | 35° 22.975'N | 111° 49.132'W |
| Drop Point | DP-05 | 35° 24.347'N | 111° 47.663'W |
| Drop Point | DP-09 | 35° 25.423'N | 111° 48.77'W |
| Drop Point | DP-11 | 35° 26.681'N | 111° 49.942'W |
| Drop Point | DP-13 | 35° 26.243'N | 111° 51.709'W |
| Drop Point | DP-15 | 35° 26.507'N | 111° 52.79'W |
| Drop Point | DP-17 | 35° 26.699'N | 111° 54.31'W |
| Drop Point | DP-19 | 35° 26.605'N | 111° 55.145'W |
| Drop Point | DP-23 | 35° 25.439'N | 111° 54.698'W |
| Helibase | Helibase | 35° 16.626'N | 112° 3.744'W |
| Helibase | Pittman | 35° 11.152'N | 112° 11.929'W |
| Helispot | H-05 | 35° 24.12'N | 111° 47.812'W |
| Helispot | H-09 | 35° 25.668'N | 111° 49.203'W |
| Helispot | H-13 | 35° 25.858'N | 111° 52.268'W |
| Helispot | H-15 | 35° 26.559'N | 111° 53.275'W |
| Helispot | H-17 | 35° 26.747'N | 111° 54.41'W |
| Helispot | H-21 | 35° 24.513'N | 111° 51.116'W |
| Helispot | ICP Helispot | 35° 17.299'N | 111° 43.178'W |
| ICP | ICP | 35° 17.162'N | 111° 43.414'W |
| Other | Smoke 67 | 35° 42.861'N | 111° 7.44'W |
| Other | Smoke 84 | 35° 15.673'N | 111° 44.22'W |
| RAWS | RAWS 58 | 35° 24.558'N | 111° 55.048'W |
| RAWS | RAWS 59 | 35° 21.733'N | 111° 49.628'W |
| Staging Area | Kendrick | 35° 24.121'N | 111° 45.254'W |
| Staging Area | Slate | 35° 29.167'N | 111° 48.38'W |
| Water Source | Closure Dip | 35° 24.479'N | 111° 45.39'W |



Comm Tower

Div N

Sunny MOA

Div J

Div E

Div A

RAWS 58

WX

DP-19

H-15

DP-15

DP-13

H-13

DP-11

H-9

DP-9

H-21

DP-5

H-5

DP-3

Kendrick

Closure Dip

Slate

191C

760

9020A

793

760A

767

171

90

US-180

