

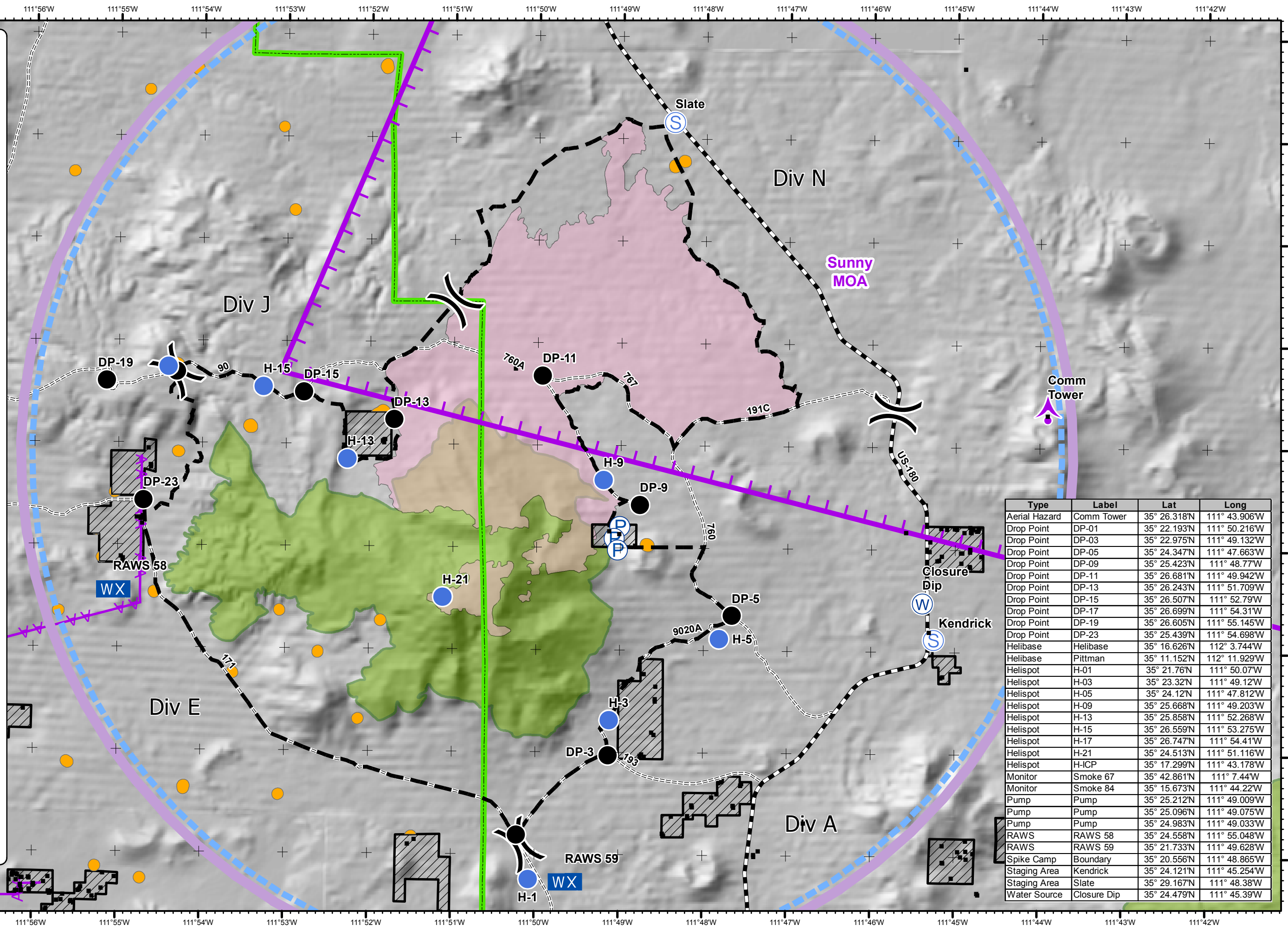
Air Ops Map Boundary Fire AZ-COF-565 18-June-2017



- Structures
- ▲ Aerial Hazard
- Drop Point
- Helispot
- WX Mobile Weather Unit
- P Pump
- S Staging Area
- W Water Source
- () Division

- Planned Fire Line
- Powerlines
- Sunny_MOA
- TFR
- Road
- Unmaintained
- Maintained
- Paved
- Retardant avoidance
- Non-FS Lands
- Fire area
- Kendrick Wilderness

cBeyerhelm, Boundary GIS
17-Jun-2017 @ 20:55



Type	Label	Lat	Long
Aerial Hazard	Comm Tower	35° 26.318'N	111° 43.906'W
Drop Point	DP-01	35° 22.193'N	111° 50.216'W
Drop Point	DP-03	35° 22.975'N	111° 49.132'W
Drop Point	DP-05	35° 24.347'N	111° 47.663'W
Drop Point	DP-09	35° 25.423'N	111° 48.77'W
Drop Point	DP-11	35° 26.681'N	111° 49.942'W
Drop Point	DP-13	35° 26.243'N	111° 51.709'W
Drop Point	DP-15	35° 26.507'N	111° 52.79'W
Drop Point	DP-17	35° 26.699'N	111° 54.31'W
Drop Point	DP-19	35° 26.605'N	111° 55.145'W
Drop Point	DP-23	35° 25.439'N	111° 54.698'W
Helibase	Helibase	35° 16.626'N	112° 3.744'W
Helibase	Pittman	35° 11.152'N	112° 11.929'W
Helispot	H-01	35° 21.76'N	111° 50.07'W
Helispot	H-03	35° 23.32'N	111° 49.12'W
Helispot	H-05	35° 24.12'N	111° 47.812'W
Helispot	H-09	35° 25.668'N	111° 49.203'W
Helispot	H-13	35° 25.858'N	111° 52.268'W
Helispot	H-15	35° 26.559'N	111° 53.275'W
Helispot	H-17	35° 26.747'N	111° 54.41'W
Helispot	H-21	35° 24.513'N	111° 51.116'W
Helispot	H-ICP	35° 17.299'N	111° 43.178'W
Monitor	Smoke 67	35° 42.861'N	111° 7.44'W
Monitor	Smoke 84	35° 15.673'N	111° 44.22'W
Pump	Pump	35° 25.212'N	111° 49.009'W
Pump	Pump	35° 25.096'N	111° 49.075'W
Pump	Pump	35° 24.983'N	111° 49.033'W
RAWS	RAWS 58	35° 24.558'N	111° 55.048'W
RAWS	RAWS 59	35° 21.733'N	111° 49.628'W
Spike Camp	Boundary	35° 20.556'N	111° 48.865'W
Staging Area	Kendrick	35° 24.121'N	111° 45.254'W
Staging Area	Slate	35° 29.167'N	111° 48.38'W
Water Source	Closure Dip	35° 24.479'N	111° 45.39'W