

111°52'0"W 111°51'0"W 111°50'0"W 111°49'0"W 111°48'0"W 111°47'0"W

35°31'0"N

35°31'0"N

35°30'0"N

35°30'0"N

35°29'0"N

35°29'0"N

35°28'0"N

35°28'0"N

35°27'0"N

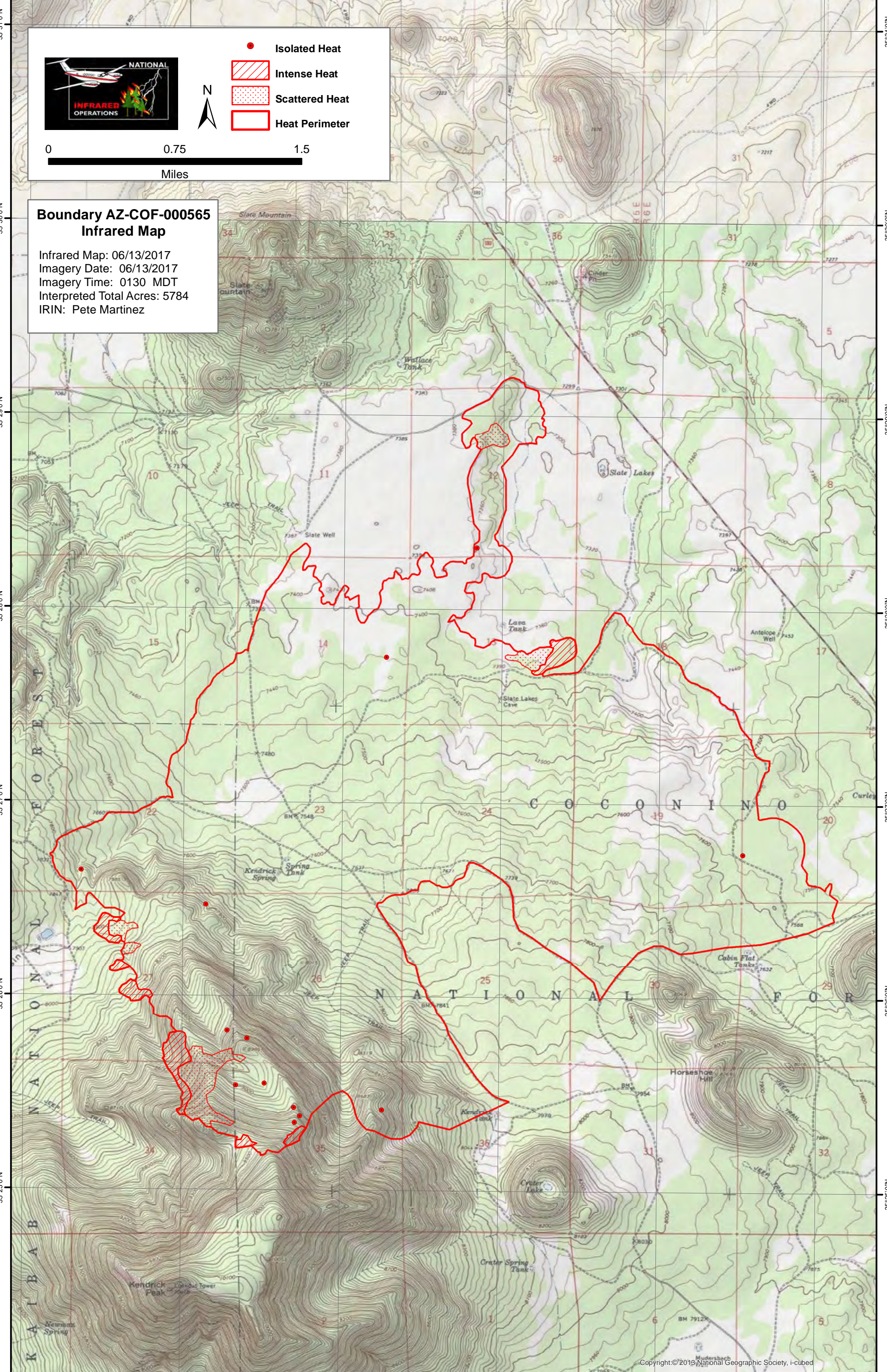

35°27'0"N

35°26'0"N

35°26'0"N

35°25'0"N

35°25'0"N

NATIONAL INFRARED OPERATIONS

- Isolated Heat
- Intense Heat
- Scattered Heat
- Heat Perimeter

N

0 0.75 1.5
Miles

**Boundary AZ-COF-000565
Infrared Map**

Infrared Map: 06/13/2017
 Imagery Date: 06/13/2017
 Imagery Time: 0130 MDT
 Interpreted Total Acres: 5784
 IRIN: Pete Martinez

111°52'0"W 111°51'0"W 111°50'0"W 111°49'0"W 111°48'0"W 111°47'0"W