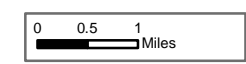








**Burro Incident Index Map**

GIS Acres 14,600  
7/2/2017 18:00



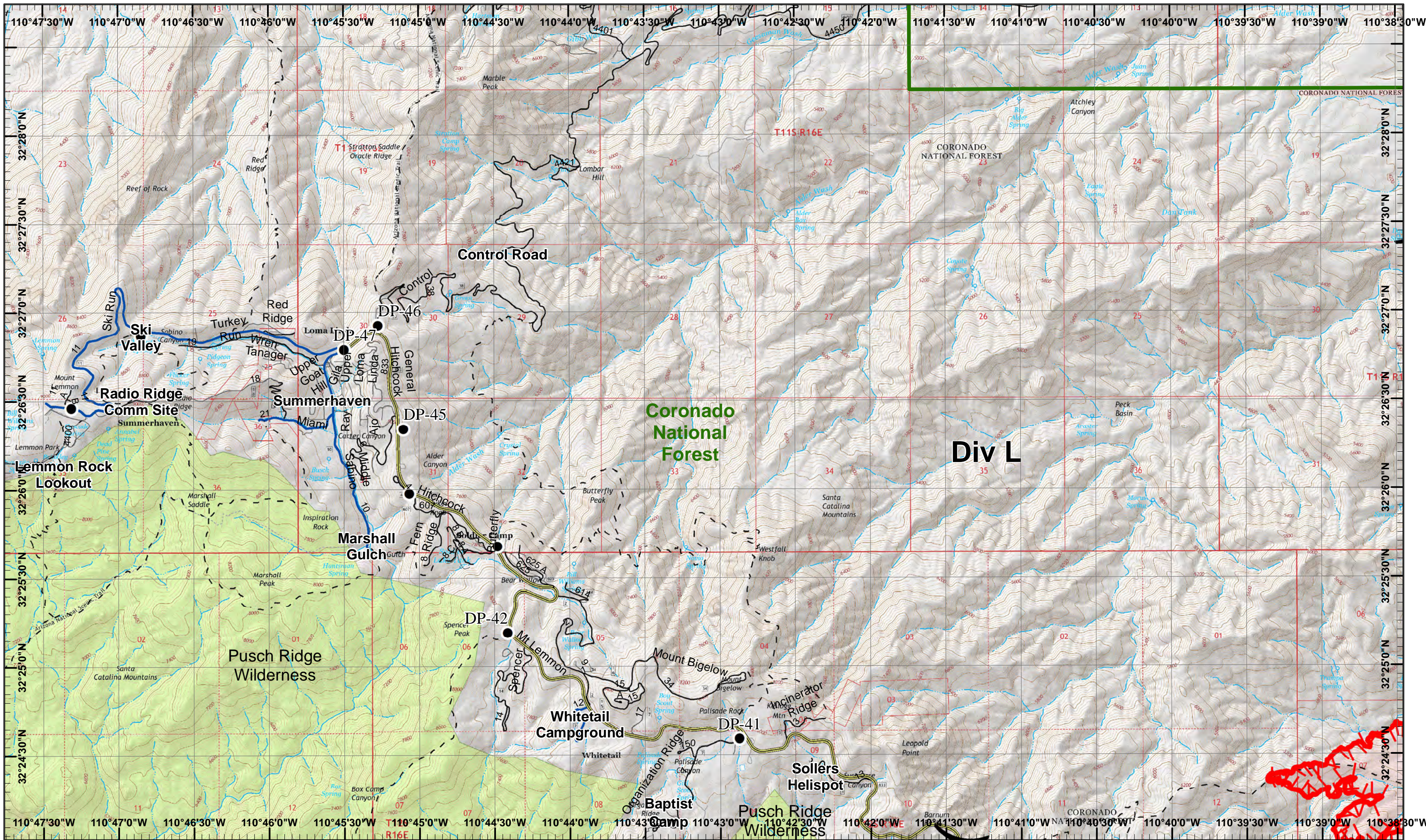
-  Dip Site
-  Incident Command Post
-  Camp
-  Uncontrolled Fire Edge
-  Drop Point
-  Fire Perimeter

Day Operational Period 7/3/2017

Map Created 7/2/2017 10:53:40 PM RDC

) Division  
] Branch





● Drop Point

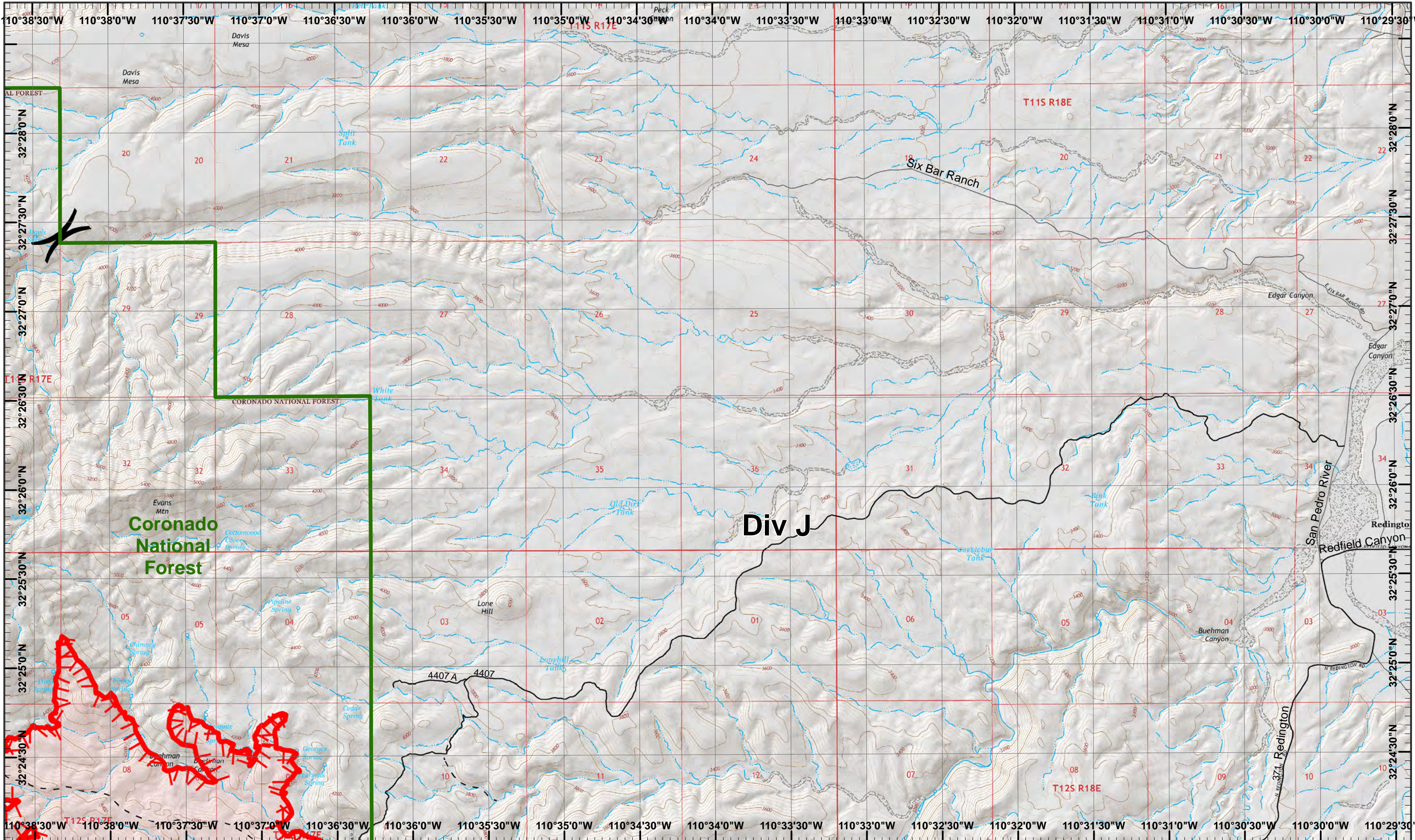


Uncontrolled Fire Edge

West Page	North Page	East Page
	South Page	

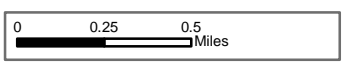
1	2
3	4
5	6





**Burro Incident**  
 Day Operational Period 7/3/2017

GIS Acres 14,600  
 7/2/2017 18:00  
 Map Created 7/2/2017 11:19:00 PM RDC



Uncontrolled Fire Edge

**Div J**

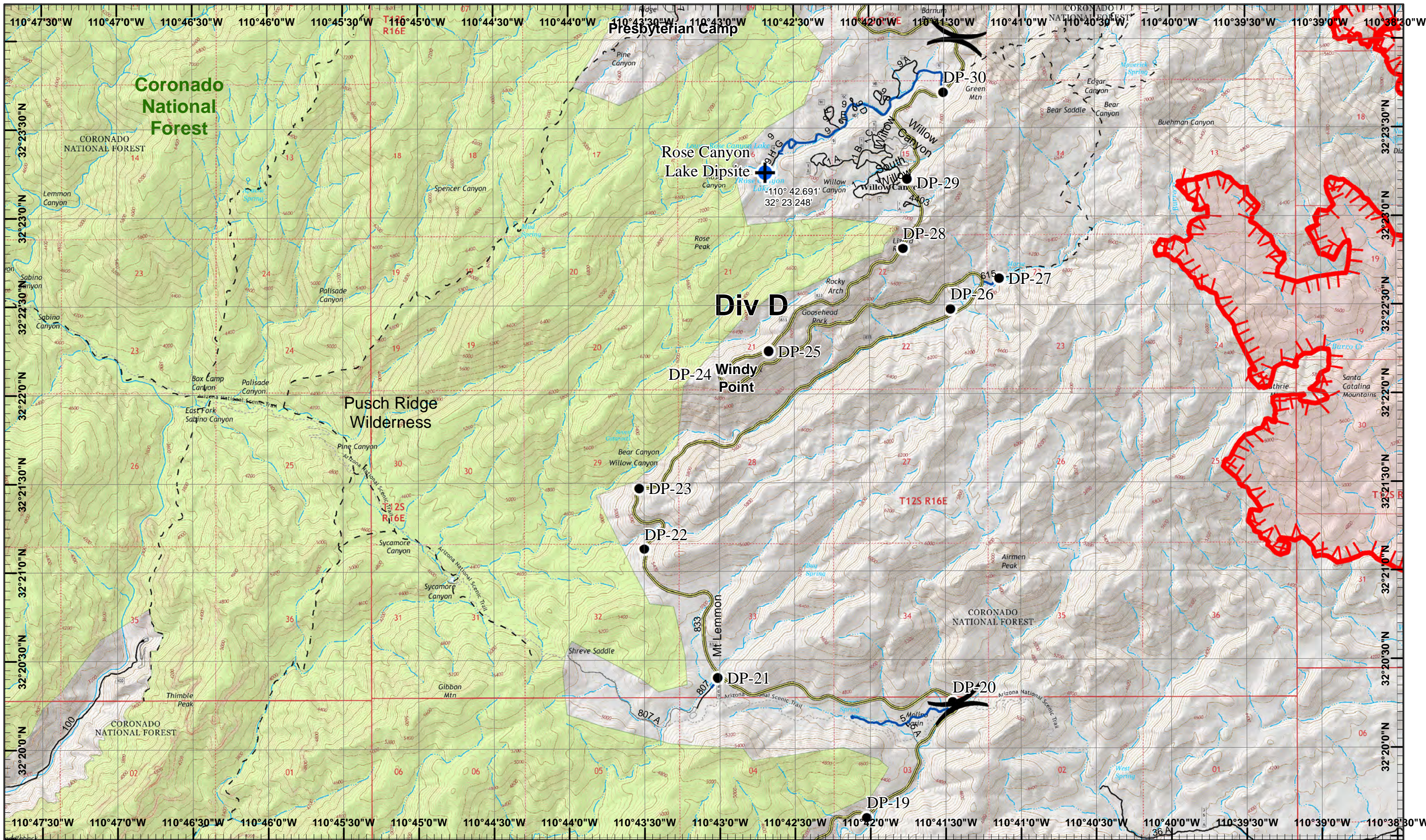
Neighboring Pages

West Page	North Page	East Page
	South Page	

1	2
3	4
5	6

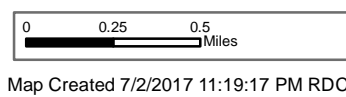
Page 2  
 )( Division  
 ][ Branch





**Burro Incident**  
 Day Operational Period 7/3/2017

GIS Acres 14,600  
 7/2/2017 18:00



Dip Site
 Drop Point
 Uncontrolled Fire Edge

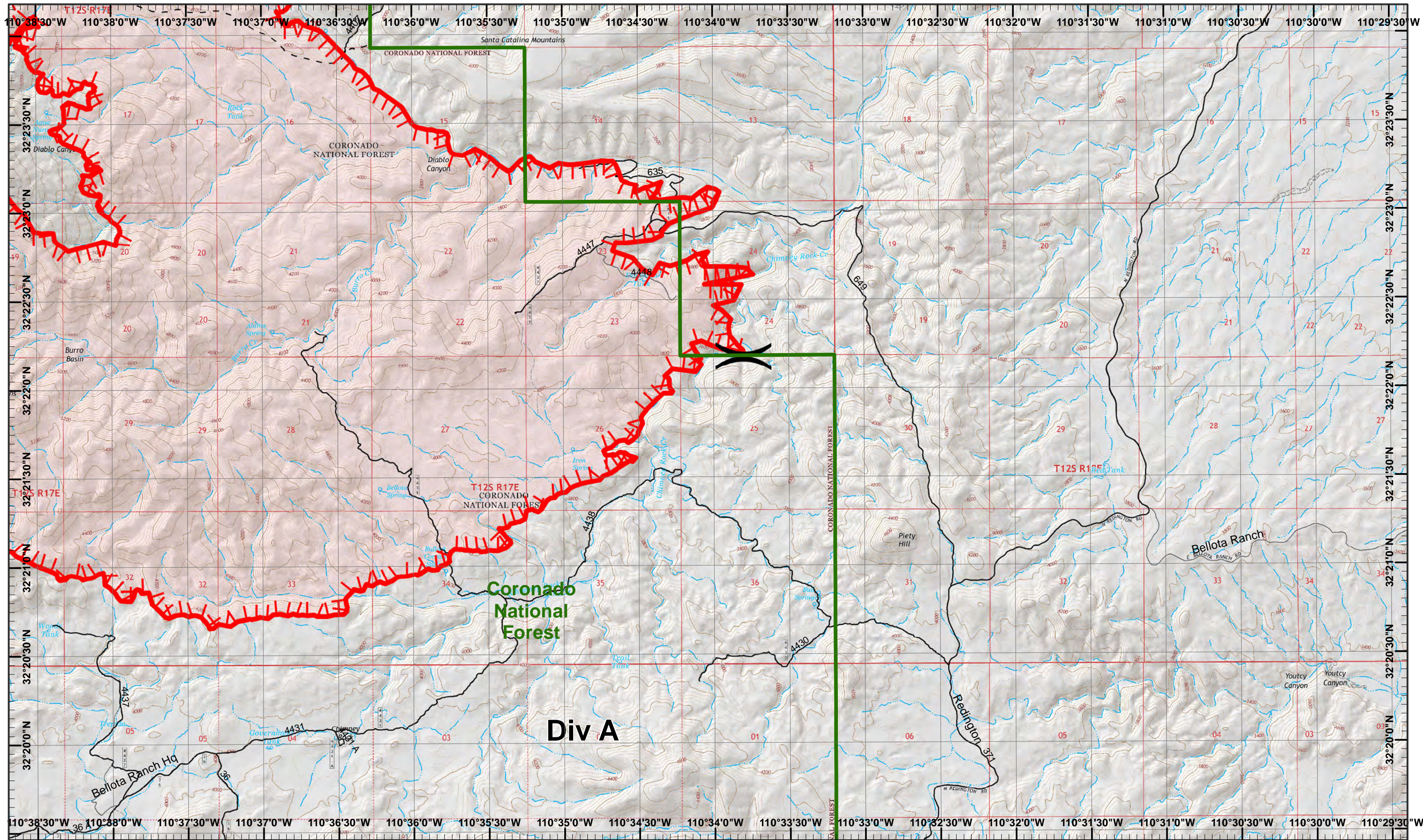
Neighboring Pages

West Page	North Page	East Page
	South Page	

1	2
3	4
5	6

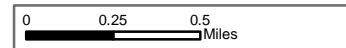
Page 3  
 )( Division  
 || Branch





**Burro Incident**  
 Day Operational Period 7/3/2017

GIS Acres 14,600  
 7/2/2017 18:00



Map Created 7/2/2017 11:19:35 PM RDC

Uncontrolled Fire Edge

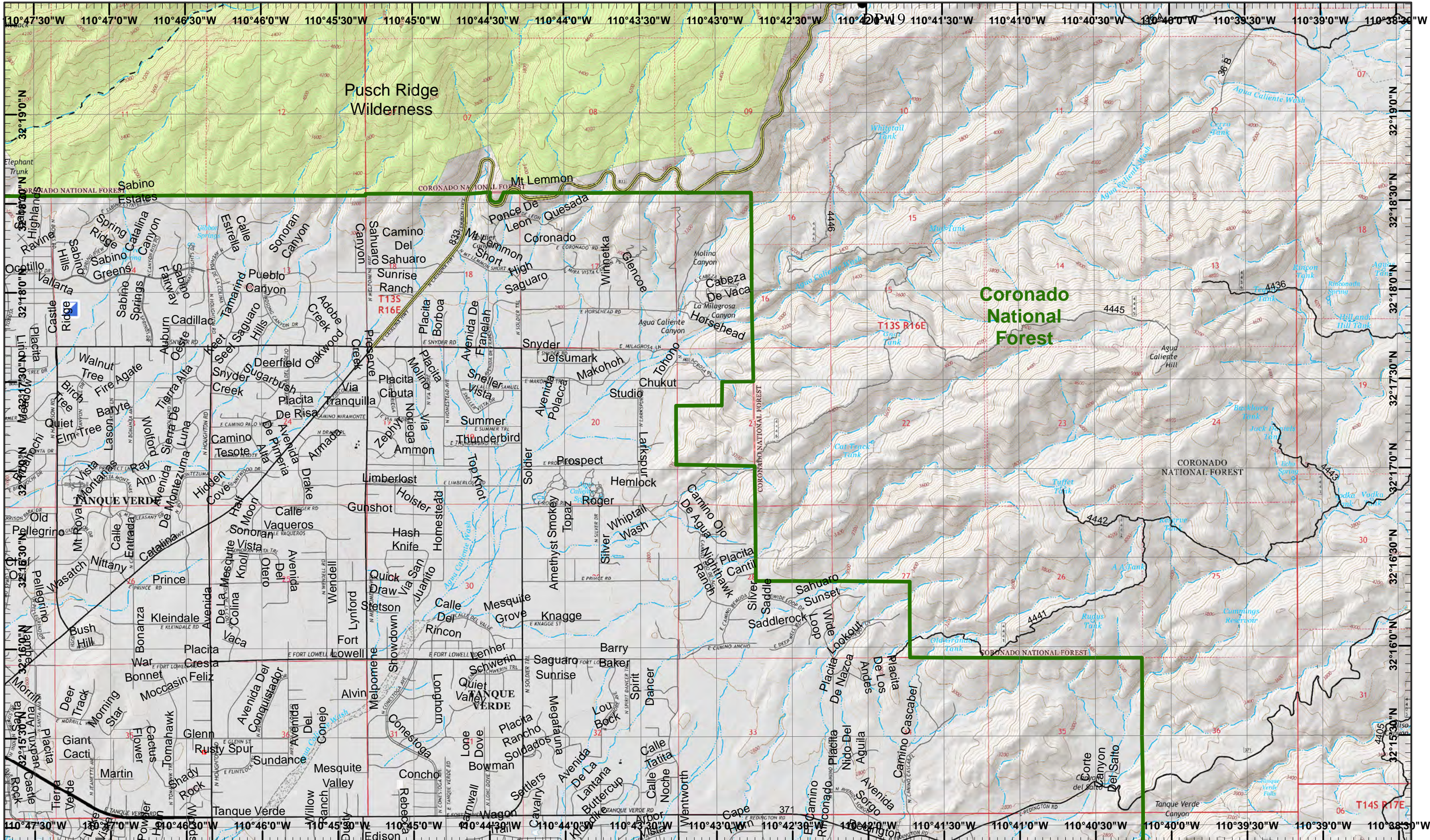
Neighboring Pages

West Page	North Page	East Page
	South Page	

1	2
3	4
5	6

Page 4  
 )( Division  
 || Branch





**Burro Incident**  
 Day Operational Period 7/3/2017

GIS Acres 14,600  
 7/2/2017 18:00  
 Map Created 7/2/2017 11:19:52 PM RDC

 Drop Point  
 Incident Command Post

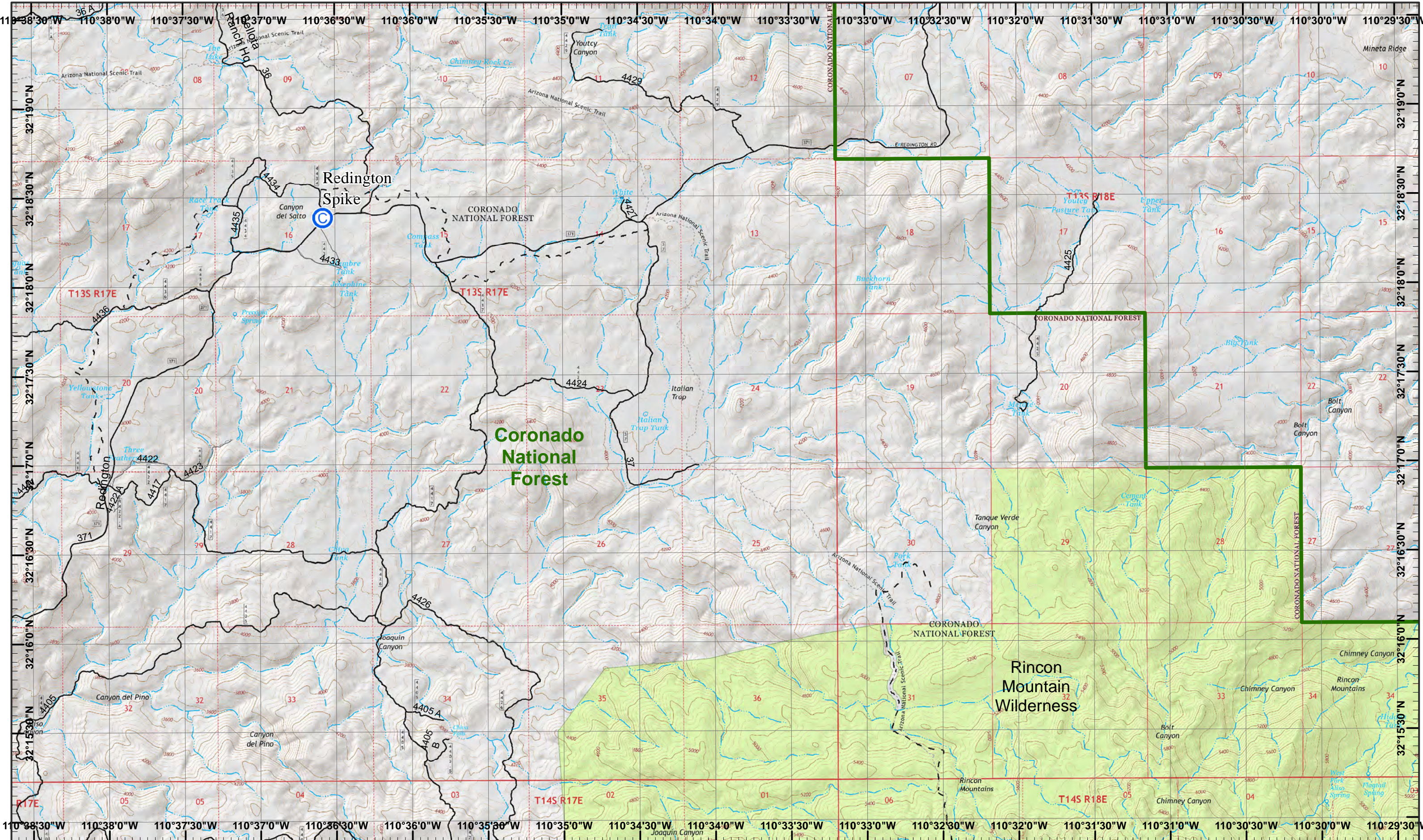
Neighboring Pages

West Page	North Page	East Page
	South Page	

1	2
3	4
5	6

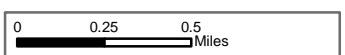
**Page 5**  
 )( Division  
 || Branch





**Burro Incident**  
 Day Operational Period 7/3/2017

GIS Acres 14,600  
 7/2/2017 18:00



Map Created 7/2/2017 11:20:09 PM RDC



Neighboring Pages

West Page	North Page	East Page
	South Page	

1	2
3	4
5	6

Page 6  
 )( Division  
 || Branch

