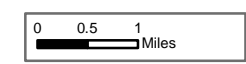





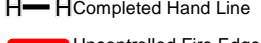






Burro Incident Index Map

GIS Acres 17,097
7/3/2017 18:30



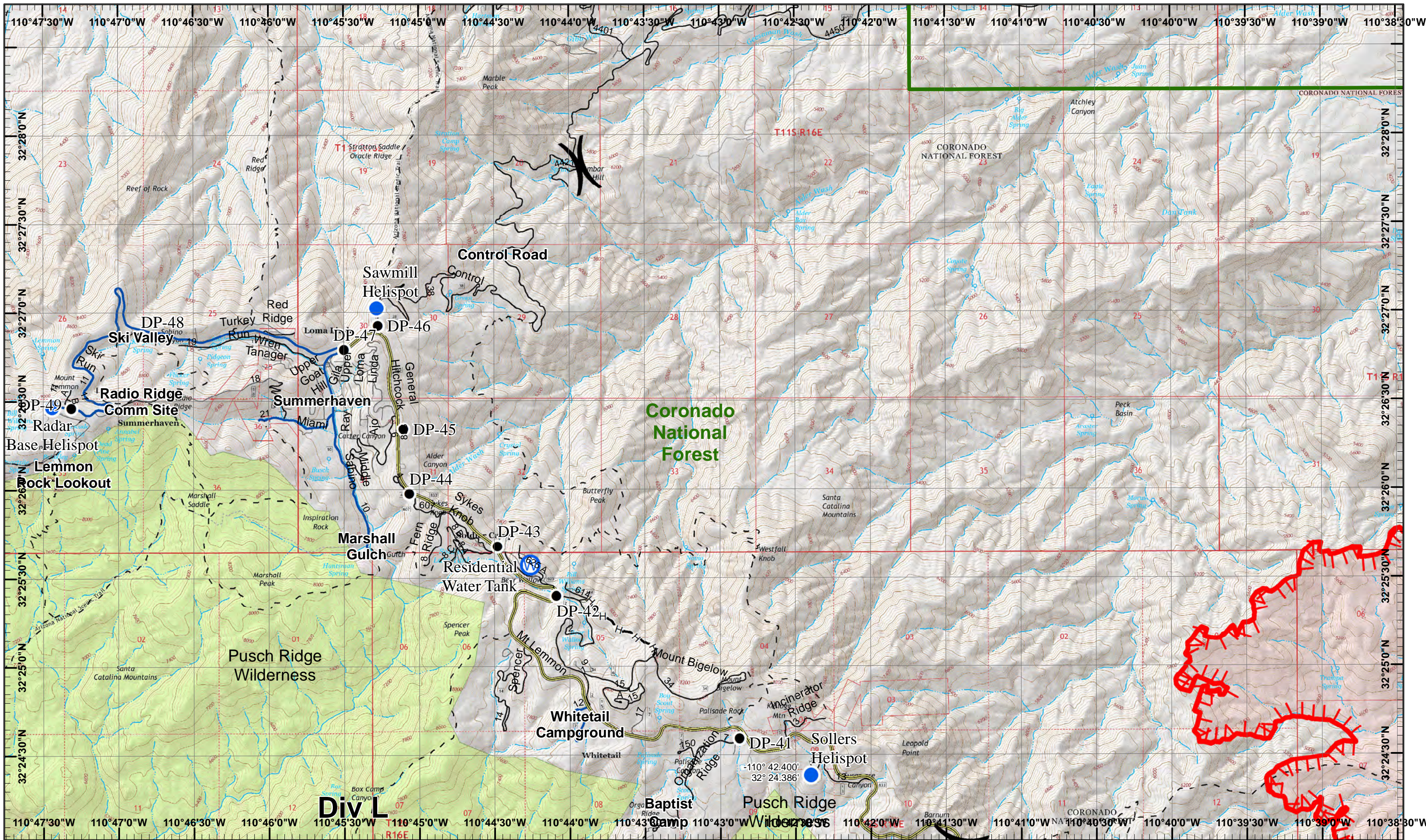
-  Dip Site
-  Fire Origin
-  Water Source
-  Camp
-  Helispot
-  HCompleted Hand Line
-  Incident Command Post
-  Uncontrolled Fire Edge
-  Drop Point
-  Fire Perimeter

Day Operational Period 7/4/2017

Map Created 7/3/2017 8:12:03 PM RDC

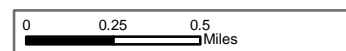
) Division
] Branch





Burro Incident
Day Operational Period 7/4/2017

GIS Acres 17,097
7/3/2017 18:30



Map Created 7/3/2017 8:53:22 PM RDC



- Drop Point
- Helispot
- W Water Source
- H—H Completed Hand Line
- Uncontrolled Fire Edge

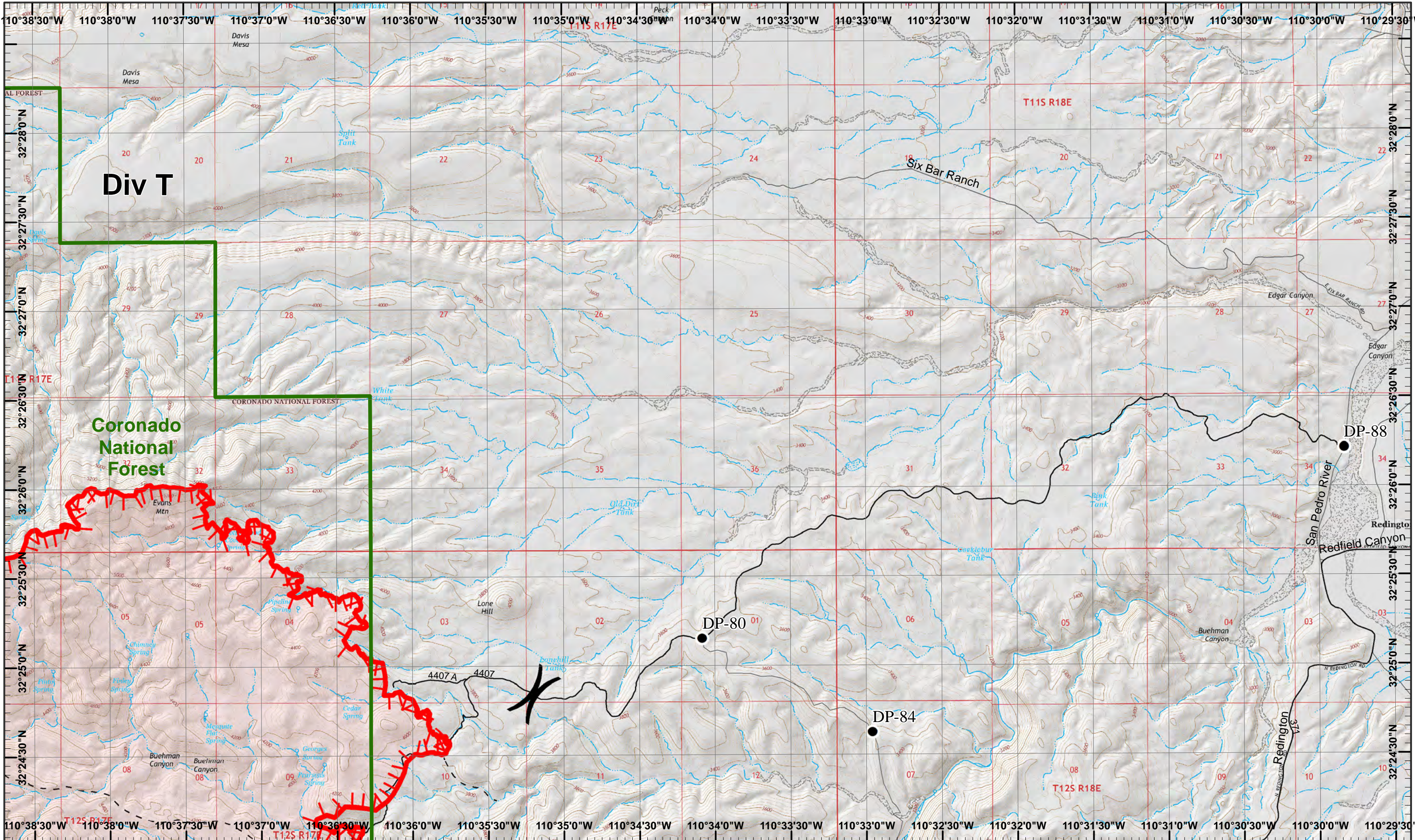
Neighboring Pages

West Page	North Page	East Page
	South Page	

1	2
3	4
5	6

Page 1
) Division
| Branch





Div T

Coronado National Forest

Six Bar Ranch

T115 R18E

T125 R18E




DP-80

DP-84

DP-88

Burro Incident
 Day Operational Period 7/4/2017

GIS Acres 17,097
 7/3/2017 18:30
 Map Created 7/3/2017 8:08:39 PM RDC


 Drop Point
 Uncontrolled Fire Edge

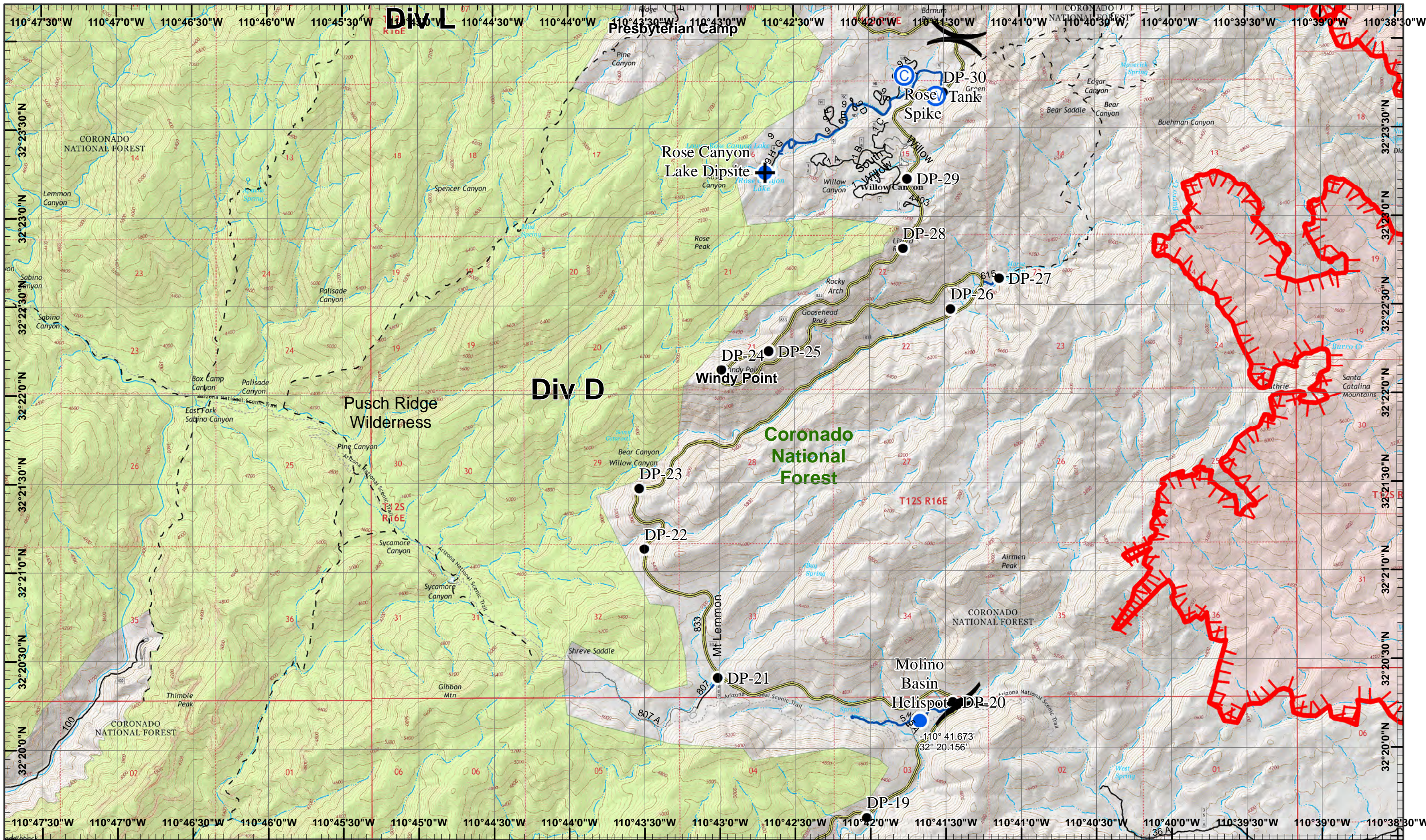
Neighboring Pages

West Page	North Page	East Page
	South Page	

1	2
3	4
5	6

Page 2
)(Division
][Branch












Div L

Div D

Burro Incident
 Day Operational Period 7/4/2017

GIS Acres 17,097
 7/3/2017 18:30
 Map Created 7/3/2017 8:08:56 PM RDC


-  North
-  Dip Site
-  Camp
-  Drop Point
-  Water Source
-  Helispot
-  Uncontrolled Fire Edge

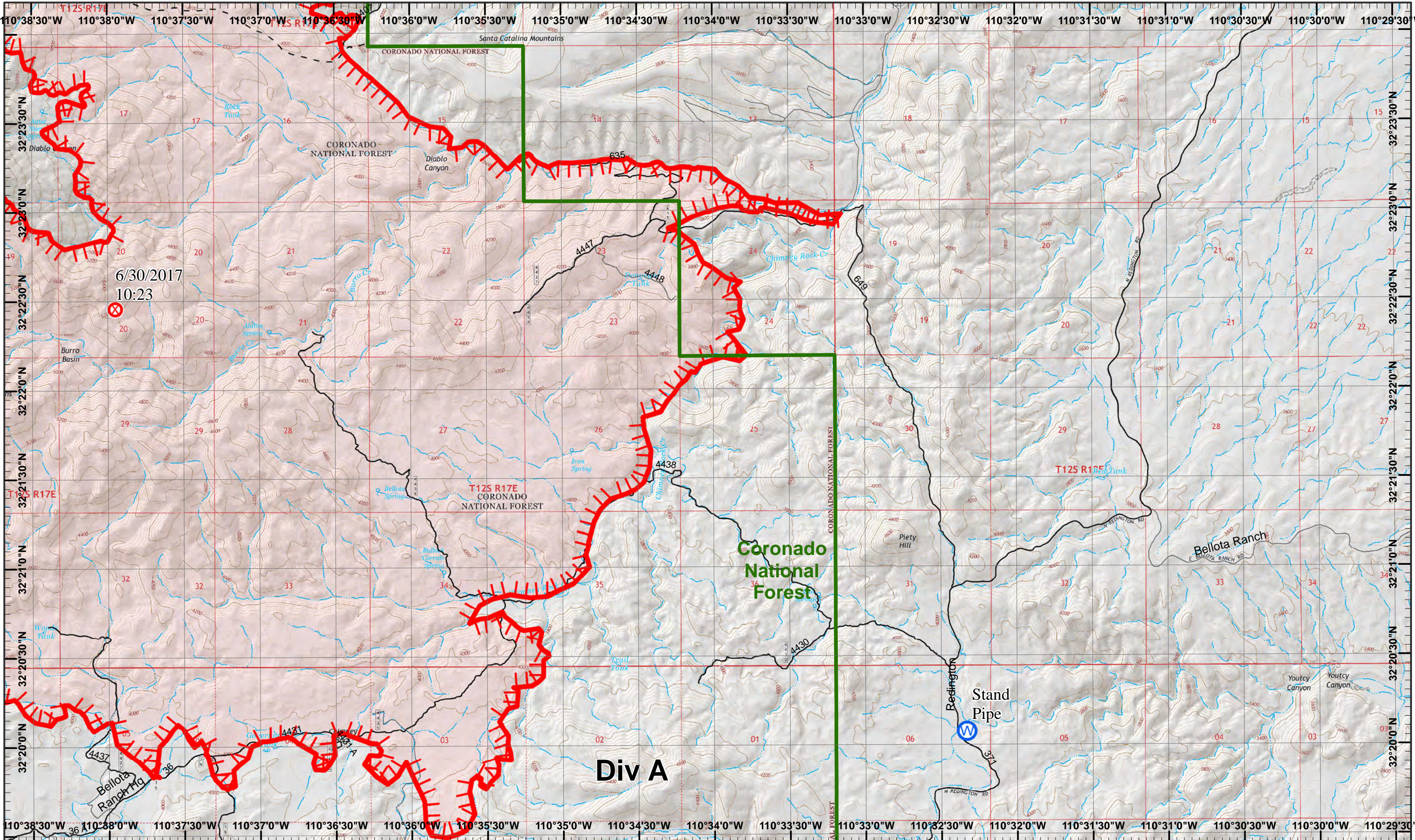
Neighboring Pages

West Page	North Page	East Page
	South Page	

1	2
3	4
5	6

Page 3
)(Division
 || Branch





Burro Incident
 Day Operational Period 7/4/2017

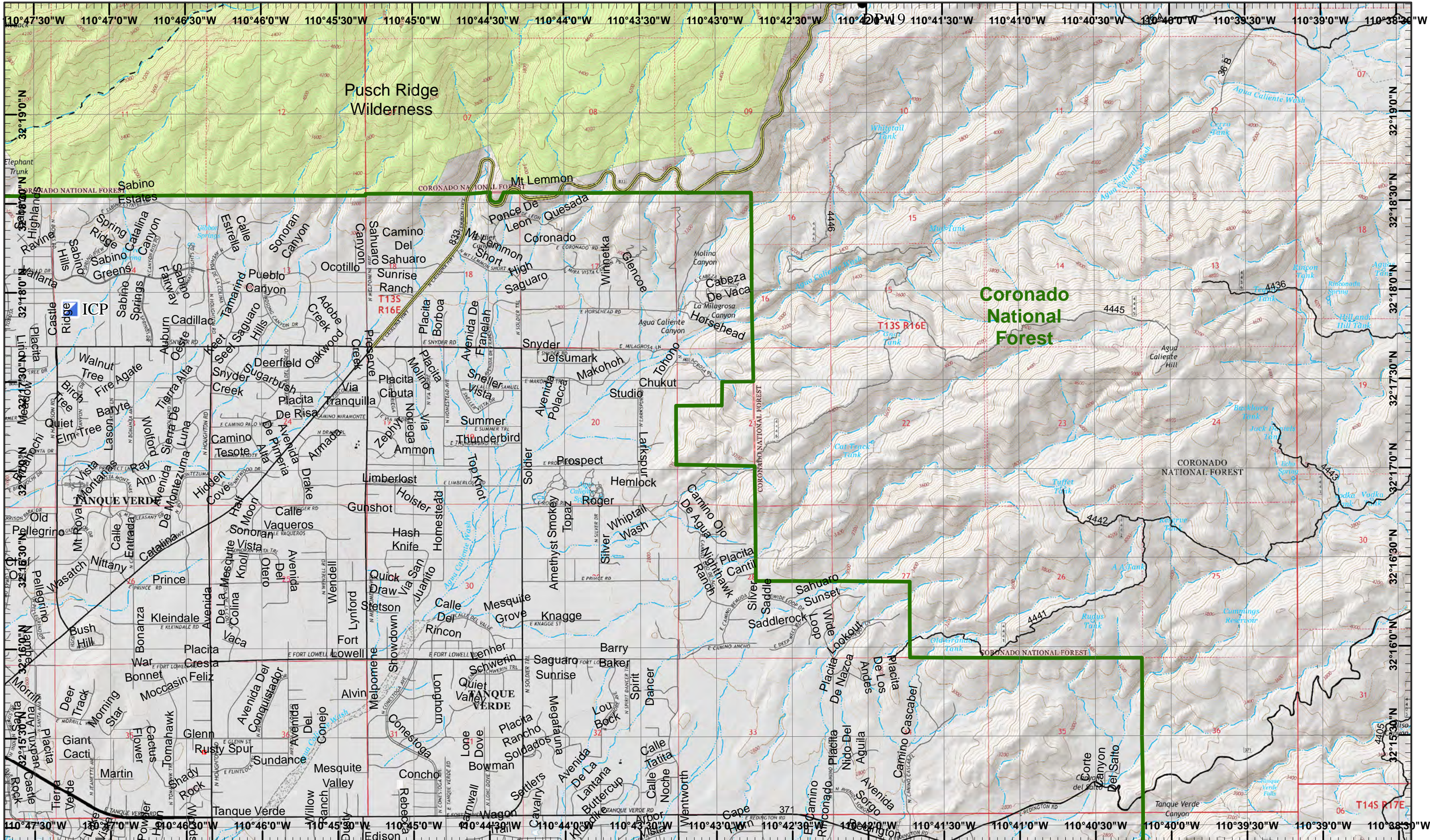
GIS Acres 17,097
 7/3/2017 18:30
 Map Created 7/3/2017 8:09:15 PM RDC

Neighboring Pages

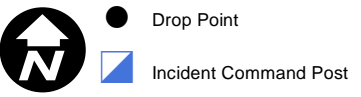
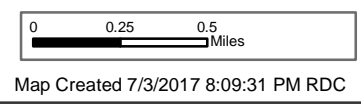
West Page	North Page	East Page
	South Page	

1	2
3	4
5	6

Page 4
)(Division
 || Branch



Burro Incident
 Day Operational Period 7/4/2017



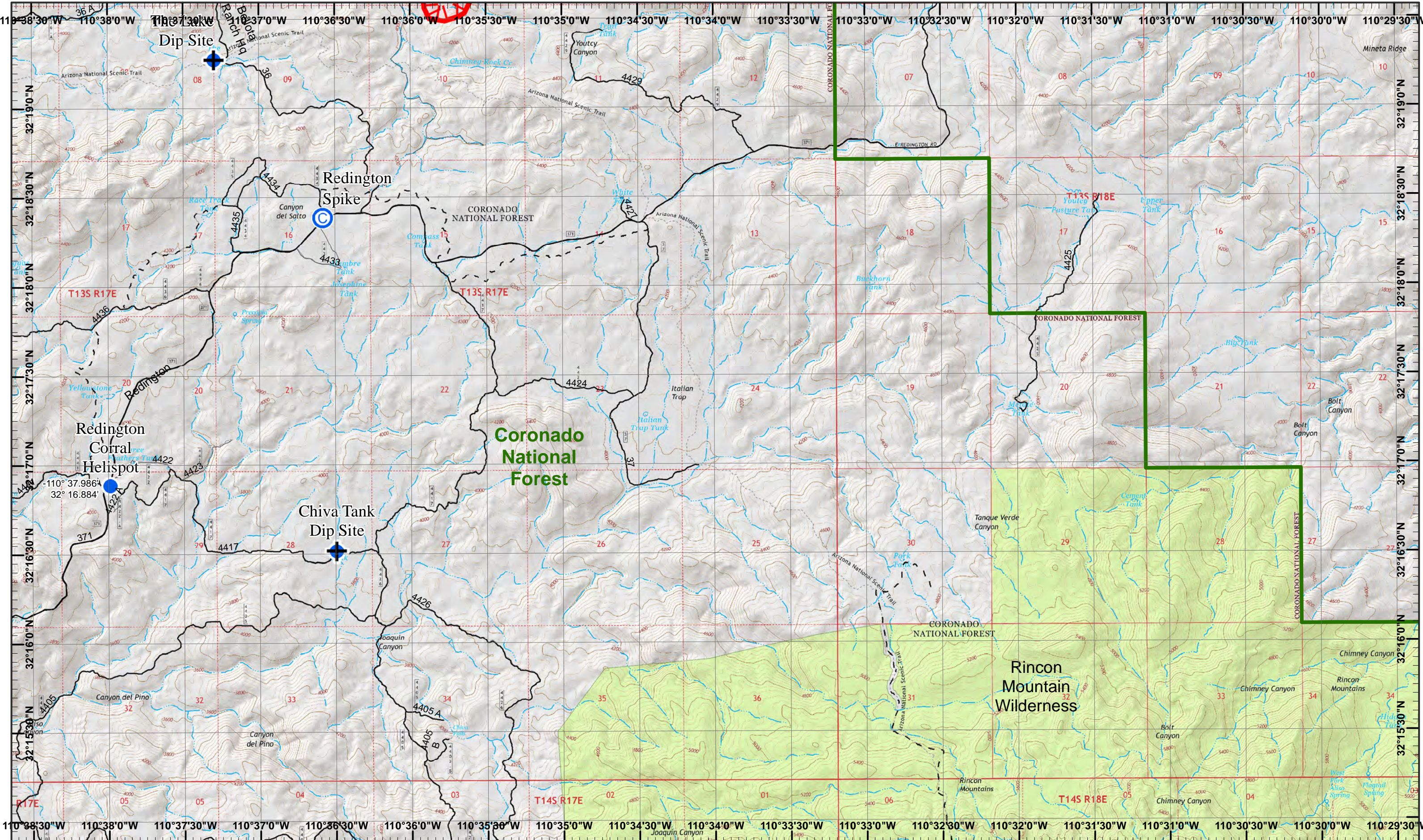
Neighboring Pages

West Page	North Page	East Page
	South Page	

1	2
3	4
5	6

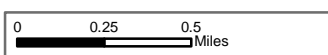
Page 5
)(Division
 || Branch





Burro Incident
 Day Operational Period 7/4/2017

GIS Acres 17,097
 7/3/2017 18:30



Map Created 7/3/2017 8:09:48 PM RDC

Dip Site
 Camp
 Helispot
 Uncontrolled Fire Edge

Neighboring Pages

West Page	North Page	East Page
	South Page	

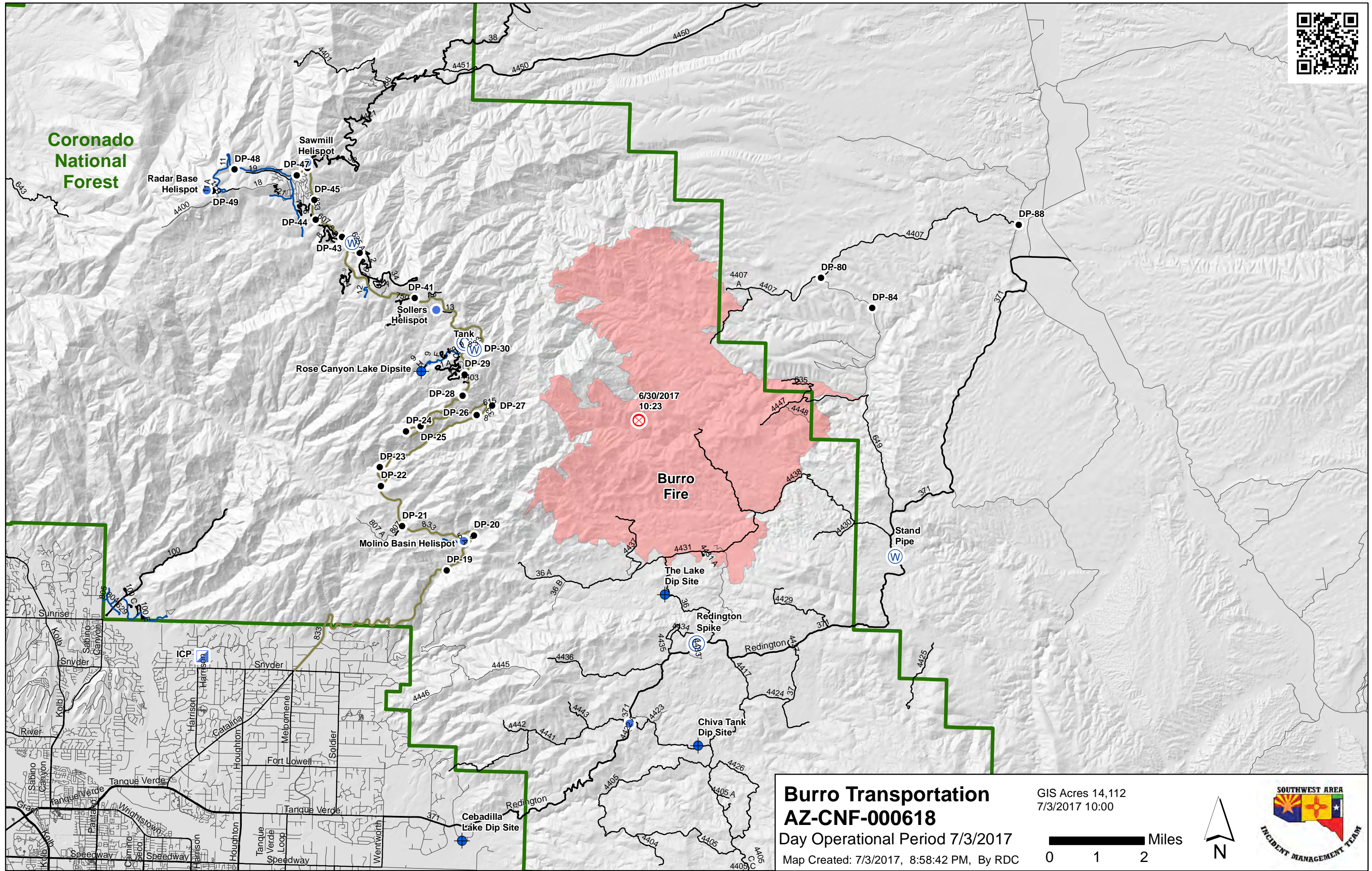
1	2
3	4
5	6

Page 6
)(Division
 || Branch





Coronado National Forest



6/30/2017
10:23

Burro Fire

Burro Transportation AZ-CNF-000618

Day Operational Period 7/3/2017

Map Created: 7/3/2017, 8:58:42 PM, By RDC

GIS Acres 14,112
7/3/2017 10:00

