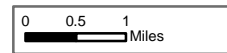


Burro Incident Index Map

GIS Acres 23,238
7/4/2017 18:00



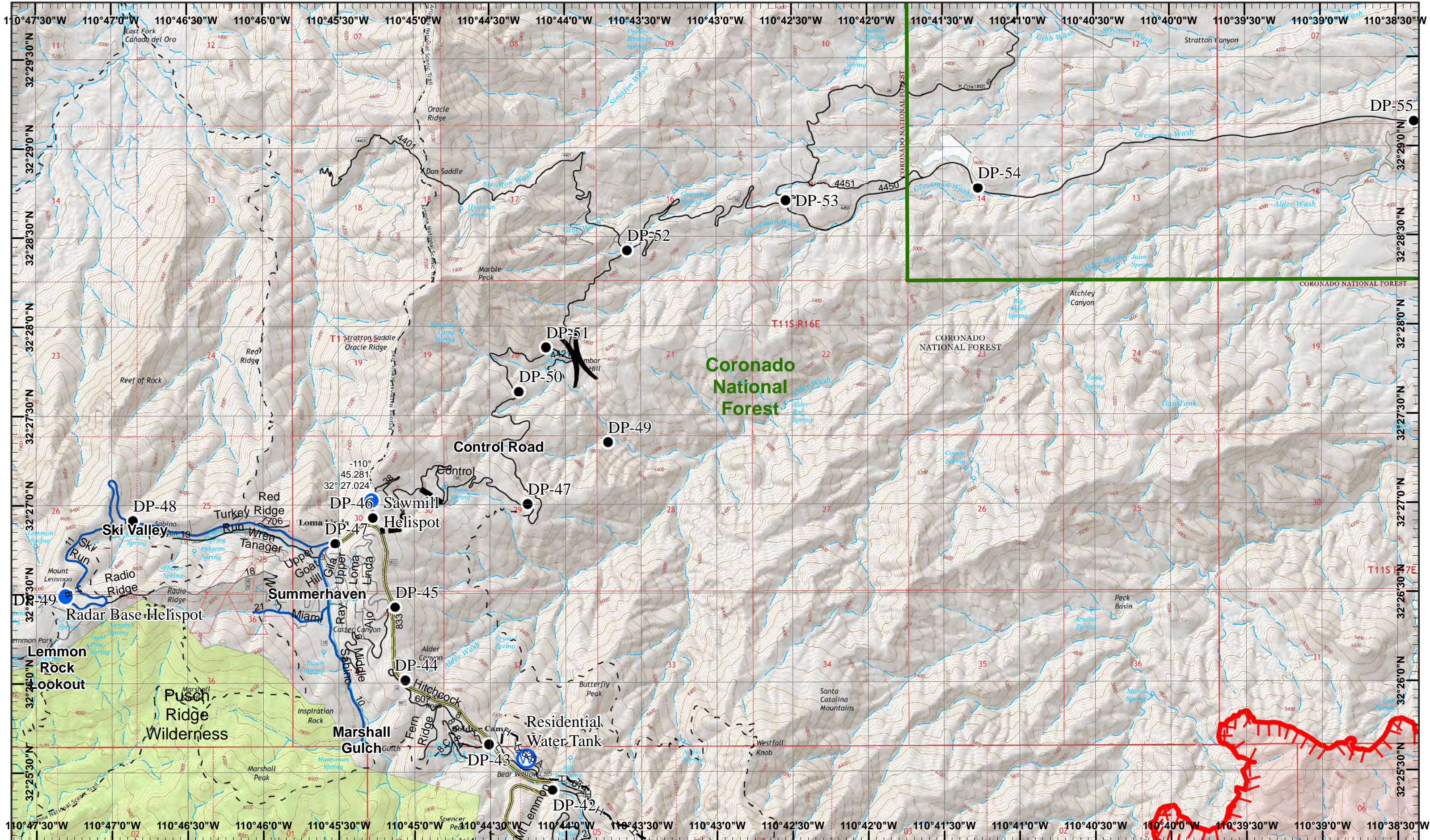
- Dip Site
- Fire Origin
- Incident Command Post
- Uncontrolled Fire Edge
- Camp
- Helibase
- Water Source
- Fire Perimeter
- Drop Point
- Helispot
- Completed Hand Line
- Planned Fire Line

Day Operational Period 7/5/2017

Map Created 7/4/2017 8:31:12 PM RDC



) Division
] Branch



Burro Incident
 Day Operational Period 7/5/2017

GIS Acres 23,238
 7/4/2017 18:00
 Map Created 7/4/2017 8:07:25 PM RDC

Drop Point
 Water Source
 Planned Fire Line

Helispot
 Completed Hand Line
 Uncontrolled Fire Edge

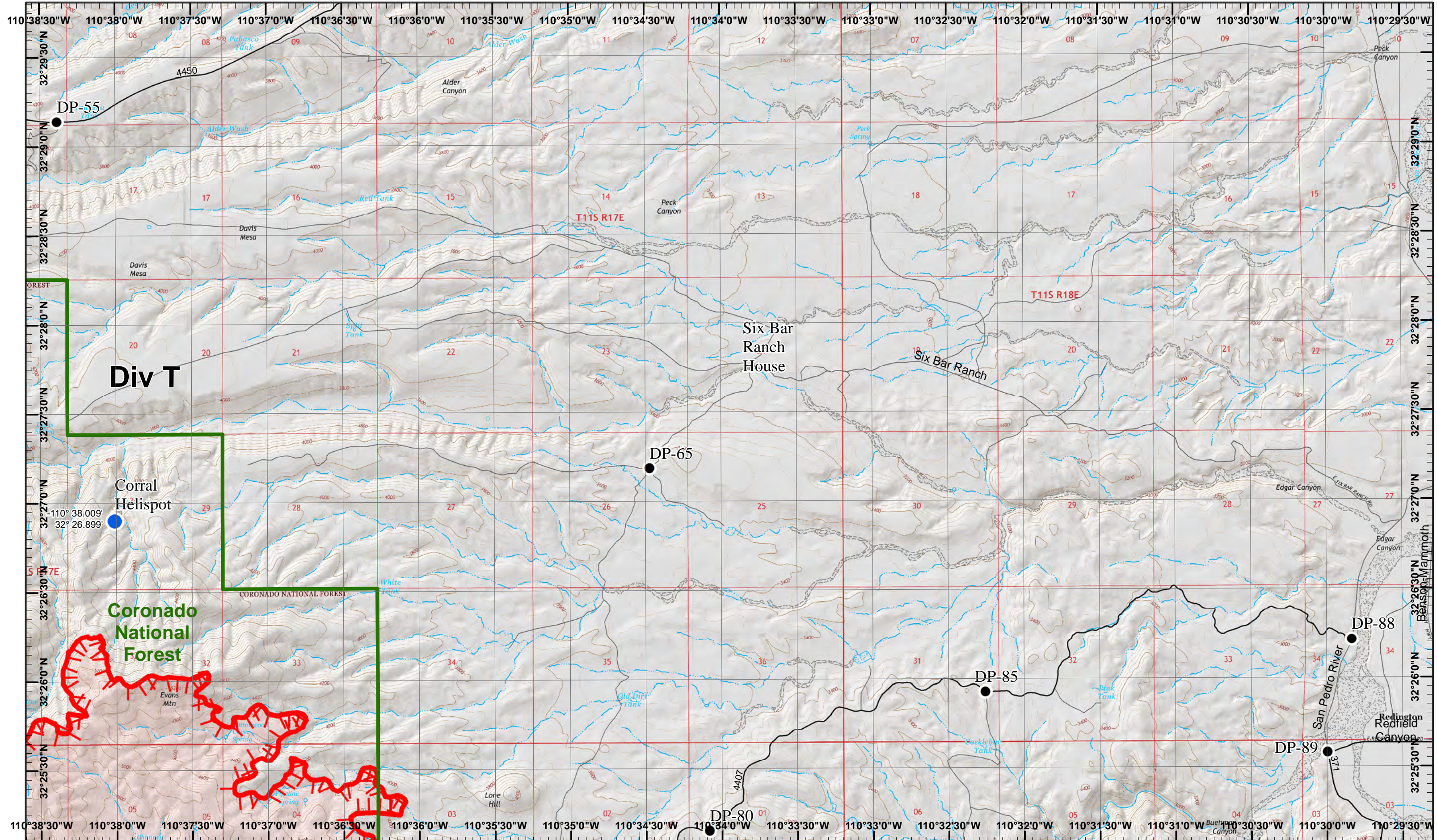
Neighboring Pages

West Page	North Page	East Page
	South Page	

1	2
3	4
5	6

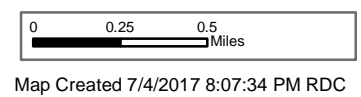
Page 1
)(Division
 || Branch





Burro Incident
 Day Operational Period 7/5/2017

GIS Acres 23,238
 7/4/2017 18:00



Drop Point
 Helispot
 Uncontrolled Fire Edge

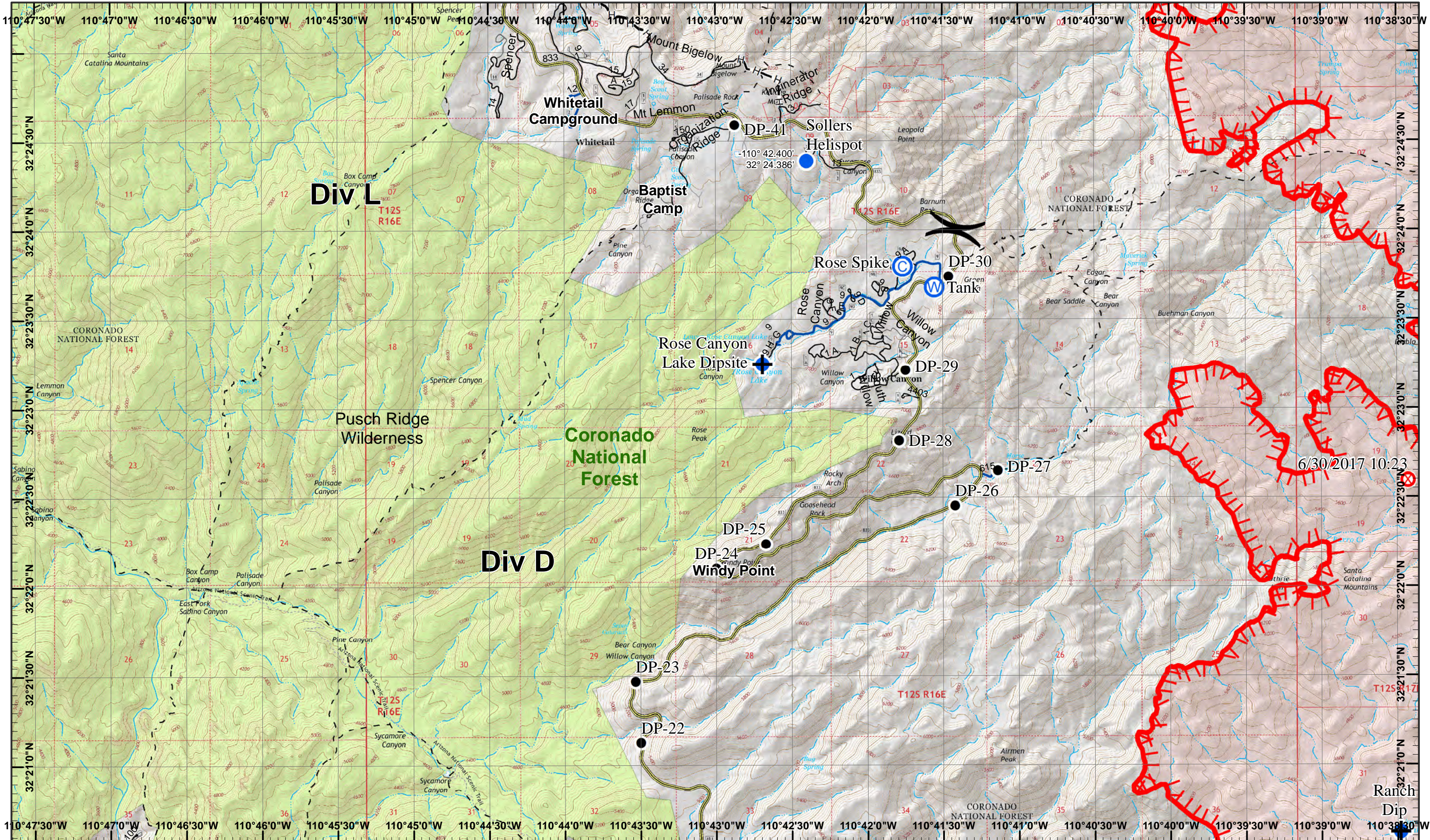
Neighboring Pages

West Page	North Page	East Page
	South Page	

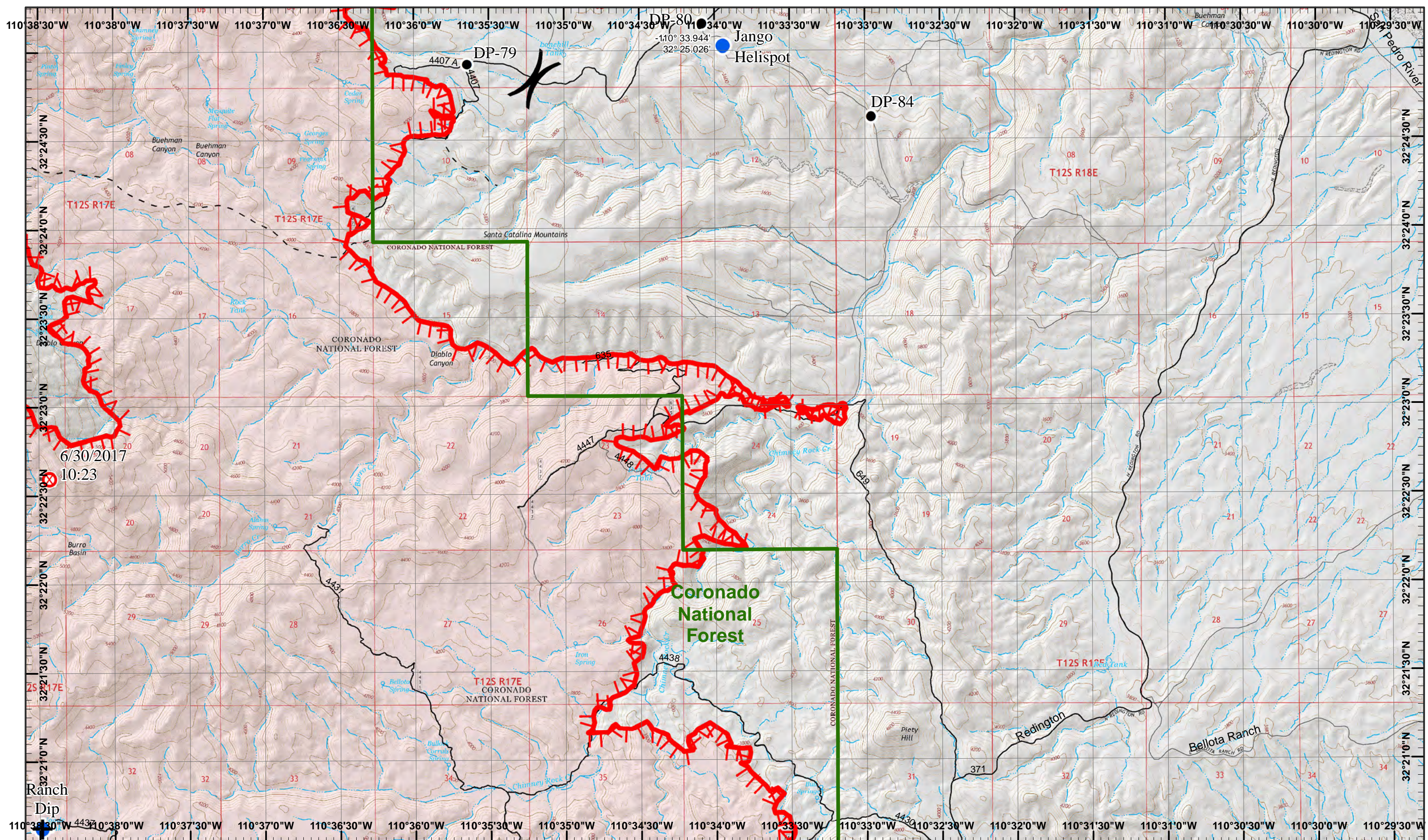
1	2
3	4
5	6

Page 2
)(Division
 || Branch





6/30/2017 10:23



6/30/2017
10:23

Burro Incident
Day Operational Period 7/5/2017

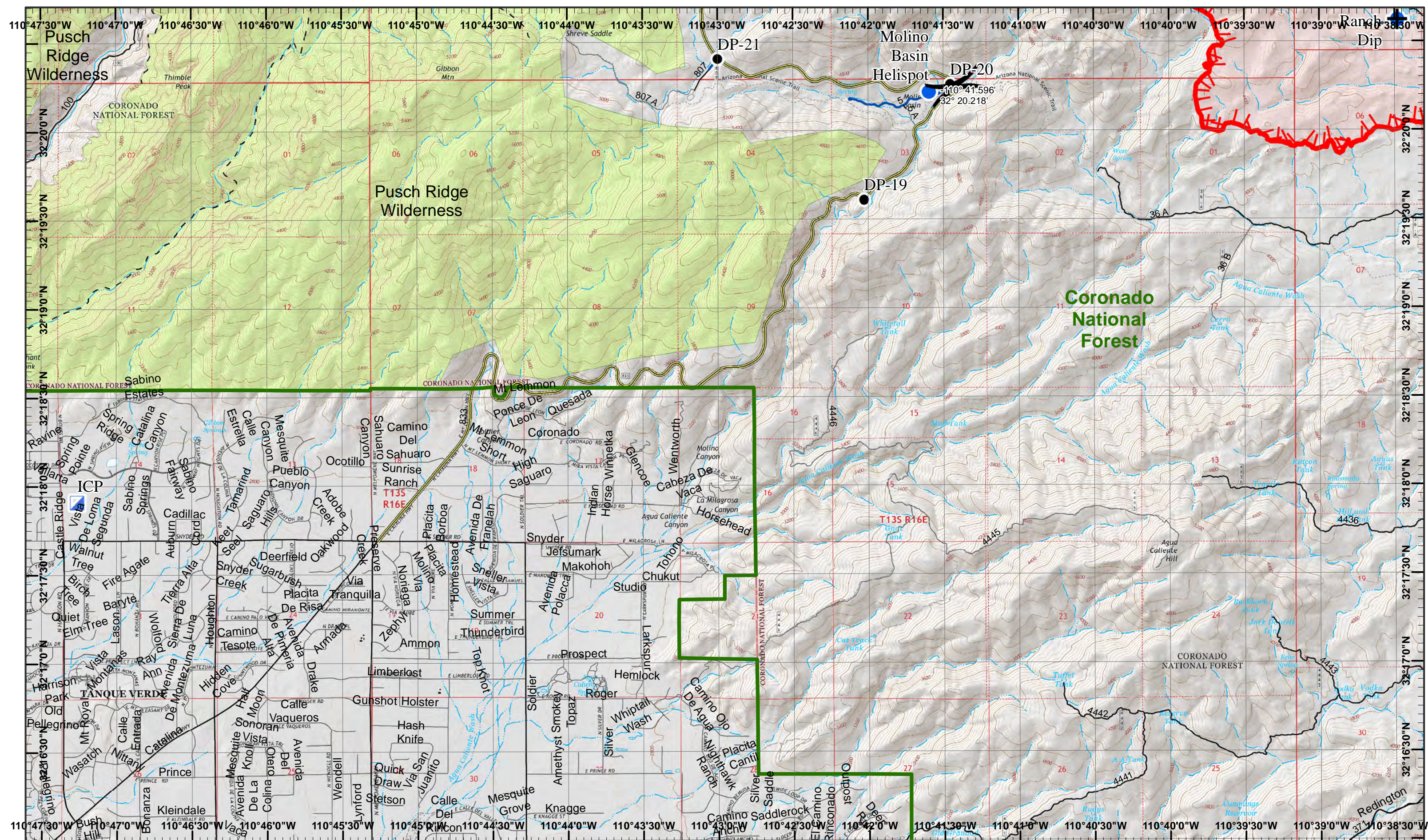
GIS Acres 23,238
7/4/2017 18:00
Map Created 7/4/2017 8:30:29 PM RDC

Dip Site
 Drop Point
 Helispot
 Fire Origin
 Uncontrolled Fire Edge

Neighboring Pages

West Page	North Page	East Page
	South Page	

Page 4
)(Division
 || Branch



Burro Incident
 Day Operational Period 7/5/2017

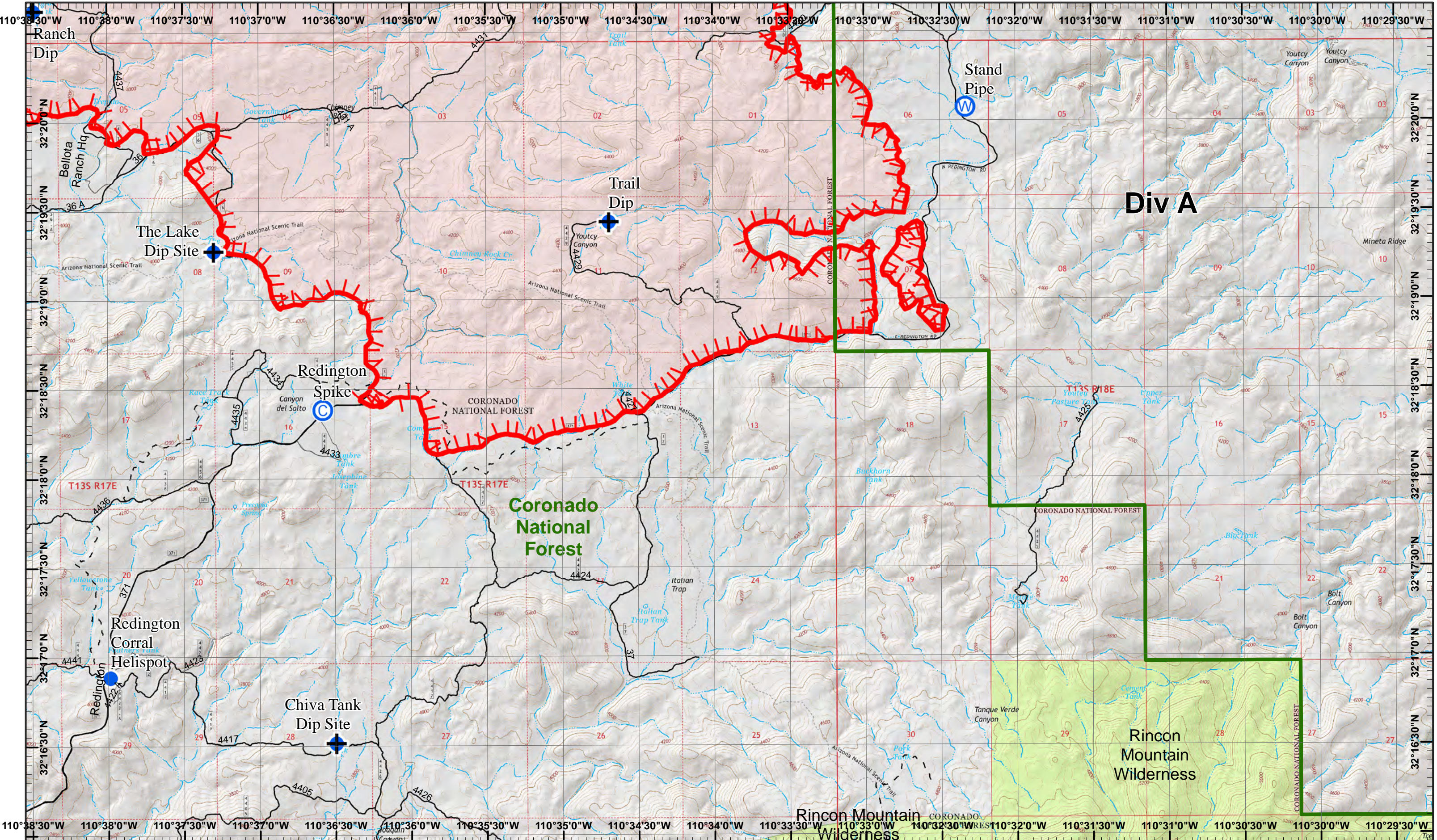
GIS Acres 23,238
 7/4/2017 18:00
 Map Created 7/4/2017 8:08:06 PM RDC

Dip Site
 Drop Point
 Helispot
 Incident Command Post
 Uncontrolled Fire Edge

Neighboring Pages

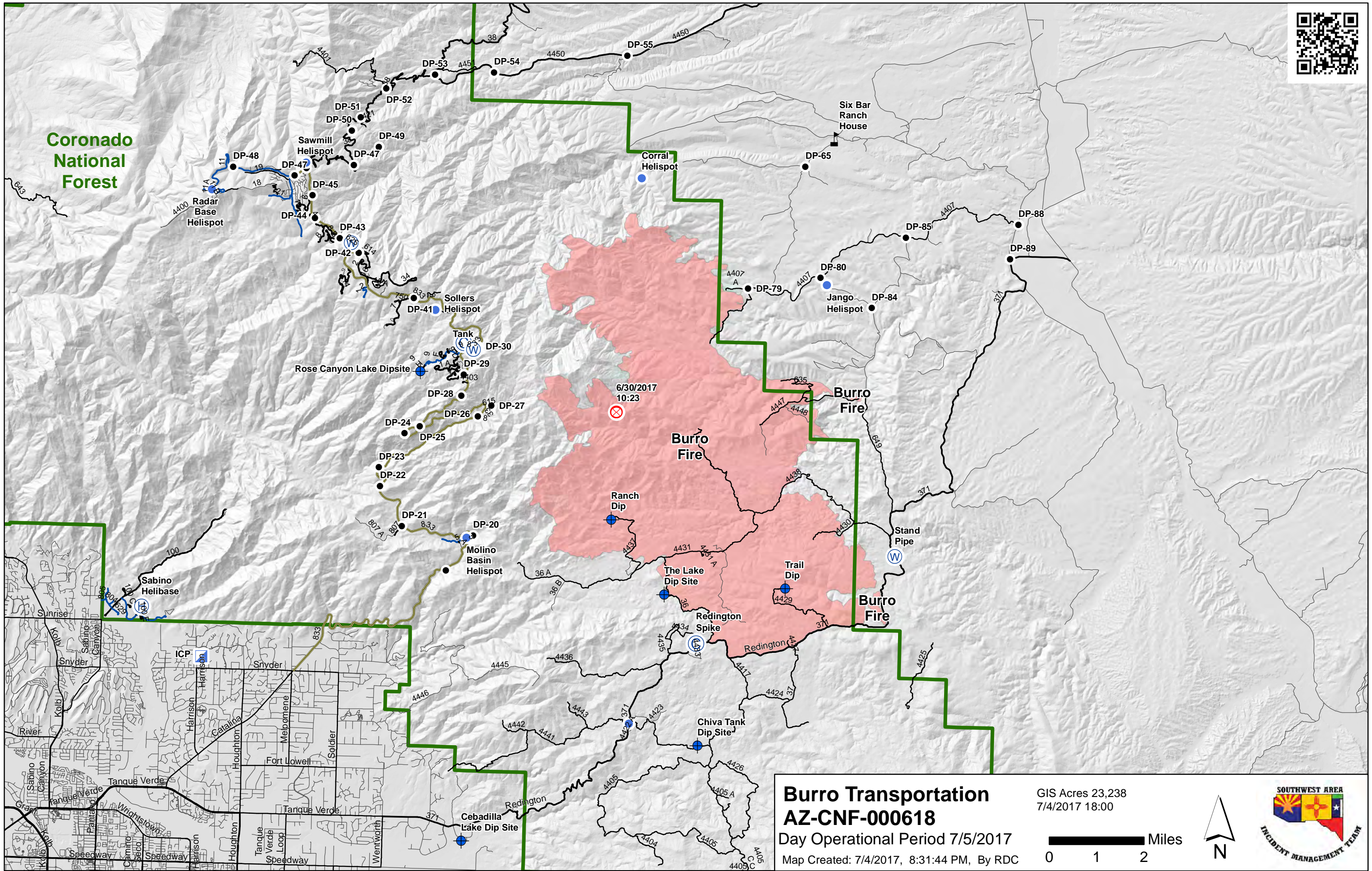
West Page	North Page	East Page
	South Page	

Page 5
)(Division
 || Branch





Coronado National Forest



Burro Transportation
AZ-CNF-000618
Day Operational Period 7/5/2017
Map Created: 7/4/2017, 8:31:44 PM, By RDC

GIS Acres 23,238
7/4/2017 18:00

